

3000 MILLER ROAD
DEARBORN, MICHIGAN

INDUSTRIAL FOR LEASE
33,254 / 54,346 / 87,600 Sq. Ft.



**SIGNATURE
ASSOCIATES**
KNOW SIGNATURE | KNOW RESULTS

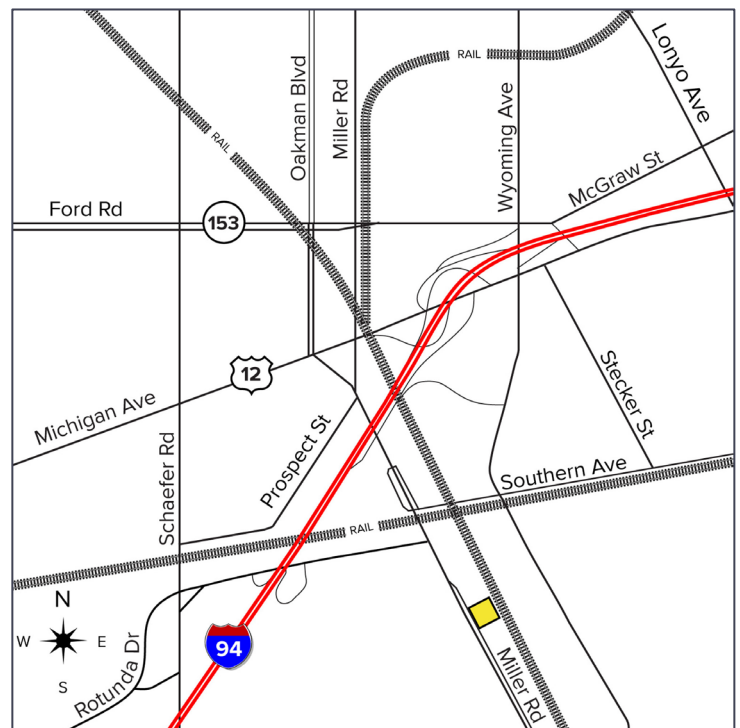
RARE MANUFACTURING SPACE

OVER 80 MW POWER AVAILABLE ON SITE



PROPERTY FEATURES

- Building may be divided into 2 main floor sections of 33,254 sq. ft. with 55' clear, 54,346 sq. ft. with 39' clear
- Power: Two 40 MW electrical sub-stations available on site
- 39'–55' clear height
- (5) 16'x24' grade level doors
- (2) 25-40 ton cranes with 29' and 34' underhook
- 80' x 1046' crane bay
- Additional 48,664 sq. ft. mezzanine available with a 25-ton crane
- Zoned heavy industrial with CN rail service
- Fenced, secured site with 24/7 guard service
- Across the street from Ford Rouge Assembly Plant
- Lease Rate: \$9.00/sq. ft. NNN



For more information, please contact:

BRAD VIERGEVER
(248) 799 3146
bviergever@signatureassociates.com

JOHN BOYD
(248) 948 0102
jboyd@signatureassociates.com

SIGNATURE ASSOCIATES
One Towne Square, Suite 1200
Southfield, MI 48076
www.signatureassociates.com

3000 Miller Road – Dearborn, Michigan

Industrial For Lease

33,254/54,346/
87,600
Square Feet
AVAILABLE

Aerial Photos



For more information, please contact:

BRAD VIERGEVER
(248) 799 3146
bviergever@signatureassociates.com

JOHN BOYD
(248) 948 0102
jboyd@signatureassociates.com

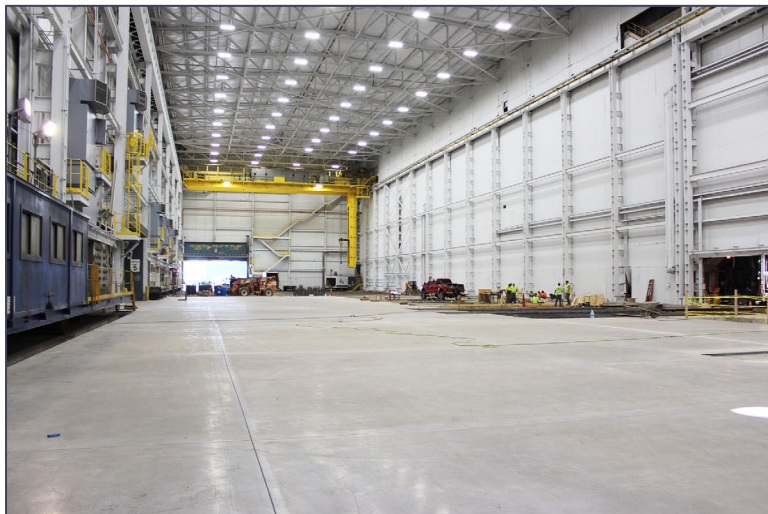
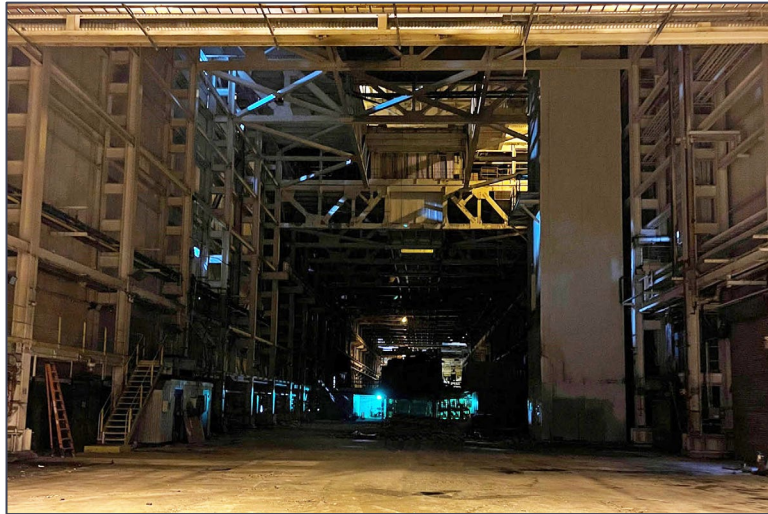
SIGNATURE ASSOCIATES
One Towne Square, Suite 1200
Southfield, MI 48076
www.signatureassociates.com

3000 Miller Road – Dearborn, Michigan

Industrial For Lease

33,254/54,346/
87,600
Square Feet
AVAILABLE

Additional Images



For more information, please contact:

BRAD VIERGEVER
(248) 799 3146
bviergever@signatureassociates.com

JOHN BOYD
(248) 948 0102
jboyd@signatureassociates.com

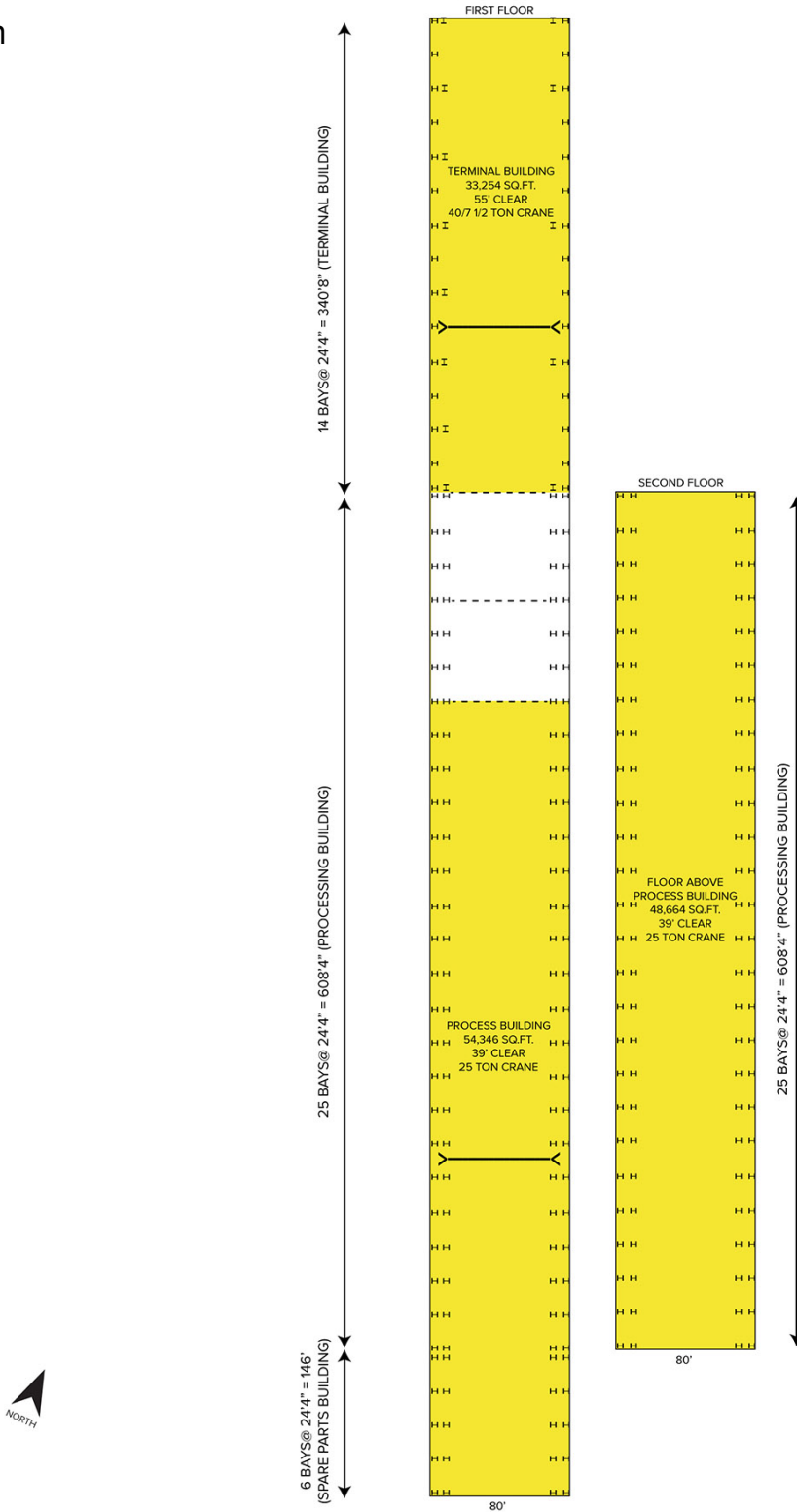
SIGNATURE ASSOCIATES
One Towne Square, Suite 1200
Southfield, MI 48076
www.signatureassociates.com

3000 Miller Road – Dearborn, Michigan

Industrial For Lease

33,254/54,346/
87,600
Square Feet
AVAILABLE

Floor Plan



For more information, please contact:

BRAD VIERGEVER
(248) 799 3146
bviergever@signatureassociates.com

JOHN BOYD
(248) 948 0102
jboyd@signatureassociates.com

SIGNATURE ASSOCIATES
One Towne Square, Suite 1200
Southfield, MI 48076
www.signatureassociates.com

3000 Miller Road – Dearborn, Michigan

Industrial For Lease

33,254/54,346/
87,600
Square Feet
AVAILABLE

Aerial



For more information, please contact:

BRAD VIERGEVER
(248) 799 3146
bviergever@signatureassociates.com

JOHN BOYD
(248) 948 0102
jboyd@signatureassociates.com

SIGNATURE ASSOCIATES
One Towne Square, Suite 1200
Southfield, MI 48076
www.signatureassociates.com