

1307 & 1407 ALLEN DRIVE  
TROY, MICHIGAN

INDUSTRIAL FOR LEASE  
3,200 – 4,000 Square Feet Available



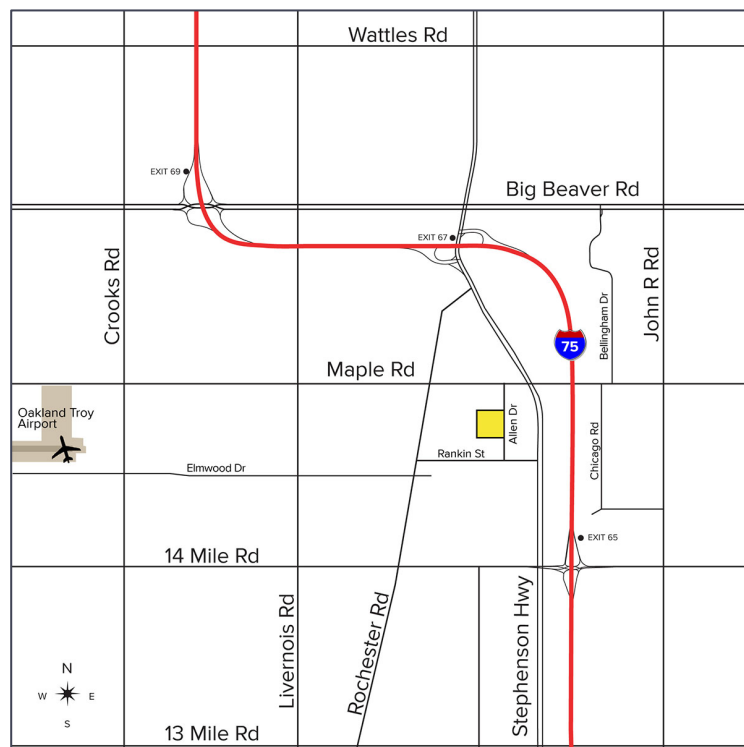
**SIGNATURE  
ASSOCIATES**  
KNOW SIGNATURE | KNOW RESULTS

**TROY TRADE CENTER**



## PROPERTY FEATURES

- 3,200 – 4,000 square feet available
- 16' clear height
- Each unit has (1) overhead door
- One unit has (1) truckwell
- Professionally managed complex centrally located near I-75 between 14 Mile and Rochester Road
- Multiple office/shop configurations available and units have been recently renovated or can be finished to suit
- Completely renovated in 2020



For more information, please contact:

**KRIS PAWLOWSKI**  
(248) 359 3801  
kpawlowski@signatureassociates.com

**JOHN DROZE**  
(248) 948 4191  
jdroze@signatureassociates.com

**SIGNATURE ASSOCIATES**  
One Towne Square, Suite 1200  
Southfield, MI 48076  
www.signatureassociates.com

# 1307 & 1407 Allen Drive - Troy, Michigan

## Industrial For Lease

3,200 – 4,000  
Square Feet  
AVAILABLE

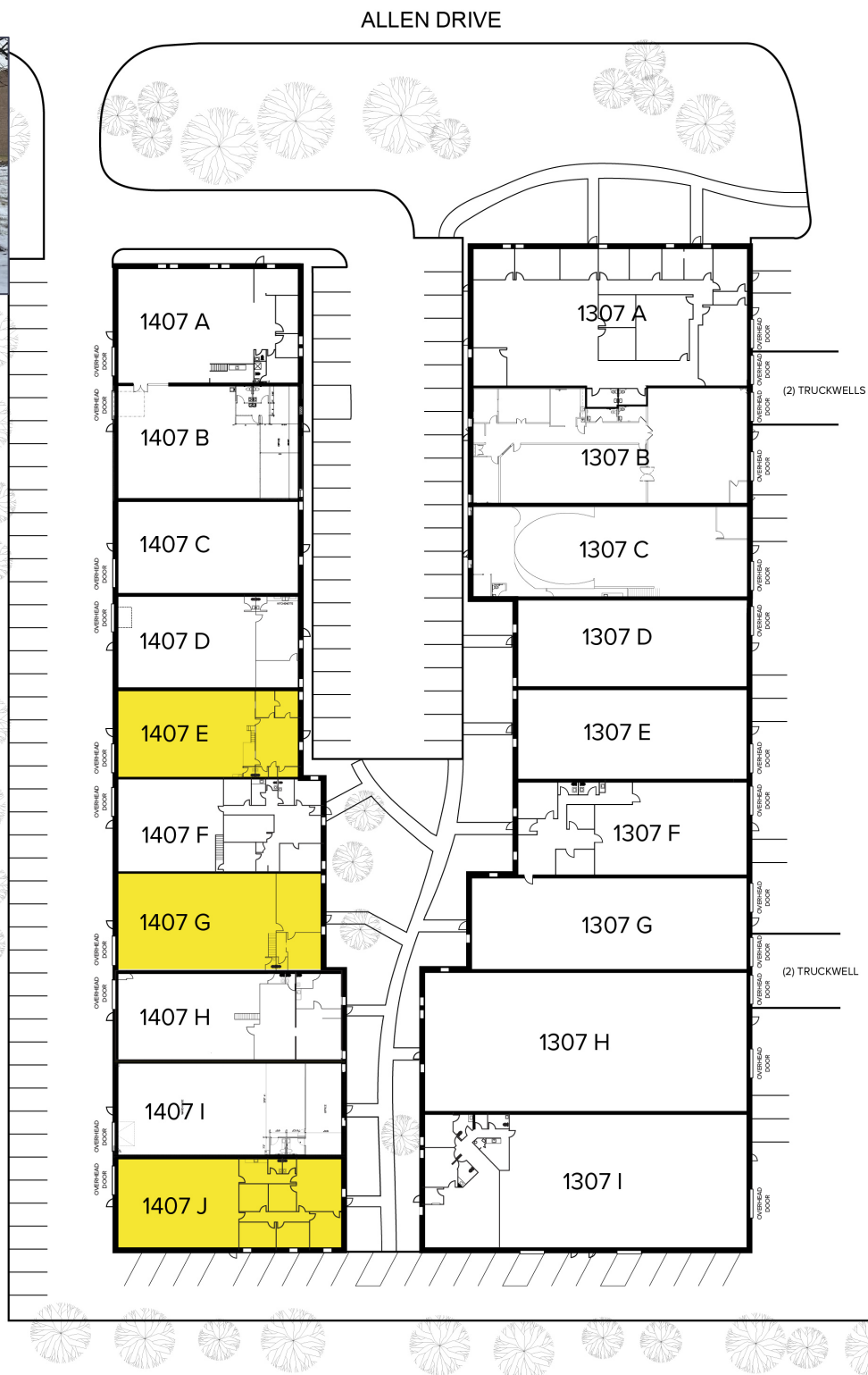
### Site Plan



#### AVAILABILITY

UNIT	TOTAL SF	OFFICE SF	RATE
1407 E	3,200	800	\$10.95 Gross
1407 G	3,600	900	\$10.95 Gross
1407 J	4,000	1,600	\$10.95 Gross

**\*\*Unit 1407 E Available June 2026**



For more information, please contact:

**KRIS PAWLOWSKI**  
(248) 359 3801  
kpawlowski@signatureassociates.com

**JOHN DROZE**  
(248) 948 4191  
jdroze@signatureassociates.com

**SIGNATURE ASSOCIATES**  
One Towne Square, Suite 1200  
Southfield, MI 48076  
www.signatureassociates.com

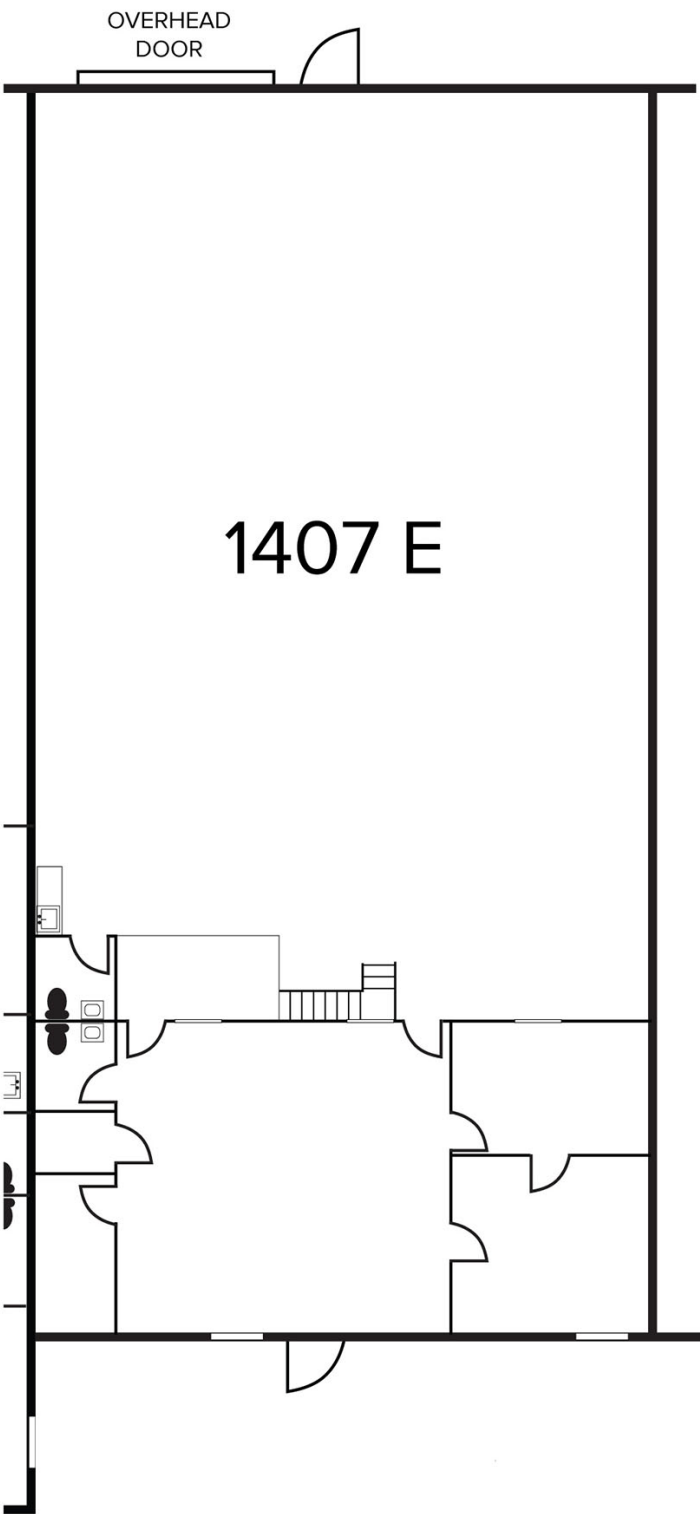
# 1307 & 1407 Allen Drive - Troy, Michigan

## Industrial For Lease

3,200 – 4,000  
Square Feet  
AVAILABLE

### Proposed Floor Plan

AVAILABILITY			
UNIT	TOTAL SF	OFFICE SF	RATE
1407 E	3,200	800	\$10.95 Gross
**Unit Available June 2026			



For more information, please contact:

**KRIS PAWLOWSKI**  
(248) 359 3801  
kpawlowski@signatureassociates.com

**JOHN DROZE**  
(248) 948 4191  
jdroze@signatureassociates.com

**SIGNATURE ASSOCIATES**  
One Towne Square, Suite 1200  
Southfield, MI 48076  
www.signatureassociates.com



# 1307 & 1407 Allen Drive - Troy, Michigan

## Industrial For Lease

3,200 – 4,000  
Square Feet  
AVAILABLE

### Interior Photos – Unit 1407 E



For more information, please contact:

**KRIS PAWLOWSKI**  
(248) 359 3801  
kpawlowski@signatureassociates.com

**JOHN DROZE**  
(248) 948 4191  
jdroze@signatureassociates.com

**SIGNATURE ASSOCIATES**  
One Towne Square, Suite 1200  
Southfield, MI 48076  
www.signatureassociates.com

Information is subject to verification and no liability for errors or omissions is assumed. Price is subject to change and listing withdrawal.

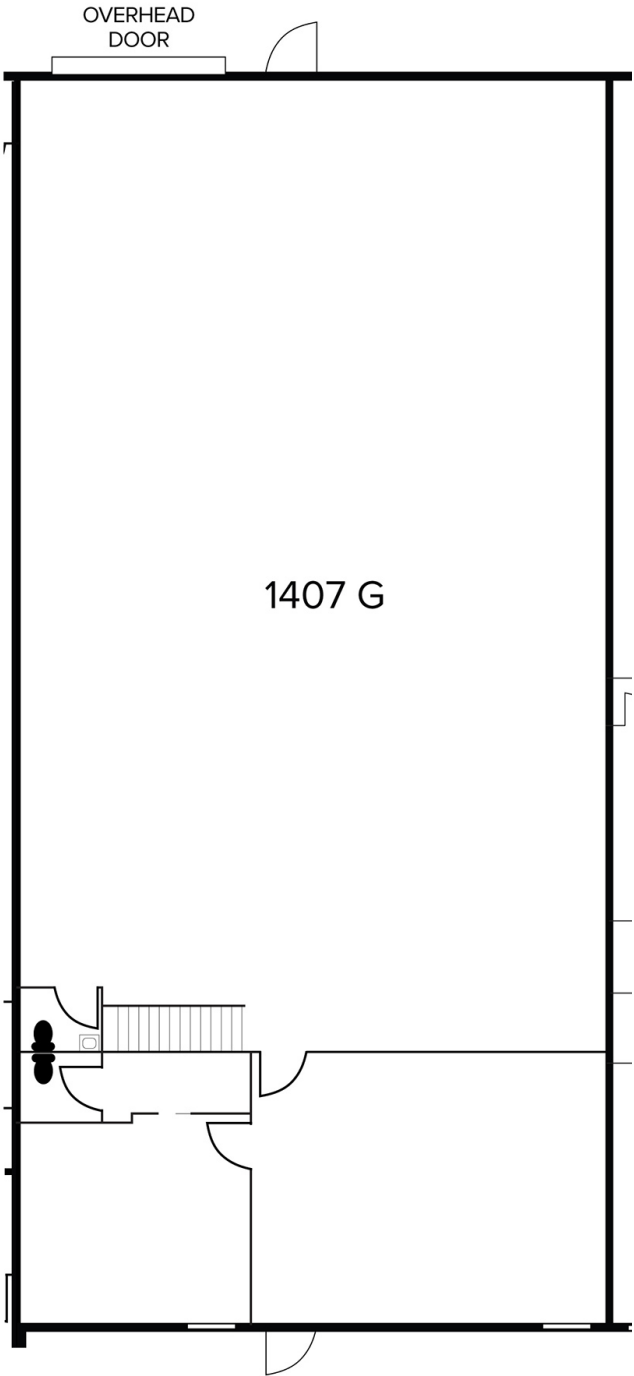
# 1307 & 1407 Allen Drive - Troy, Michigan

## Industrial For Lease

3,200 – 4,000  
Square Feet  
AVAILABLE

### Proposed Floor Plan

AVAILABILITY			
UNIT	TOTAL SF	OFFICE SF	RATE
1407 G	3,600	1,500	\$10.95 Gross



For more information, please contact:

**KRIS PAWLOWSKI**  
(248) 359 3801  
kpawlowski@signatureassociates.com

**JOHN DROZE**  
(248) 948 4191  
jdroze@signatureassociates.com

**SIGNATURE ASSOCIATES**  
One Towne Square, Suite 1200  
Southfield, MI 48076  
www.signatureassociates.com

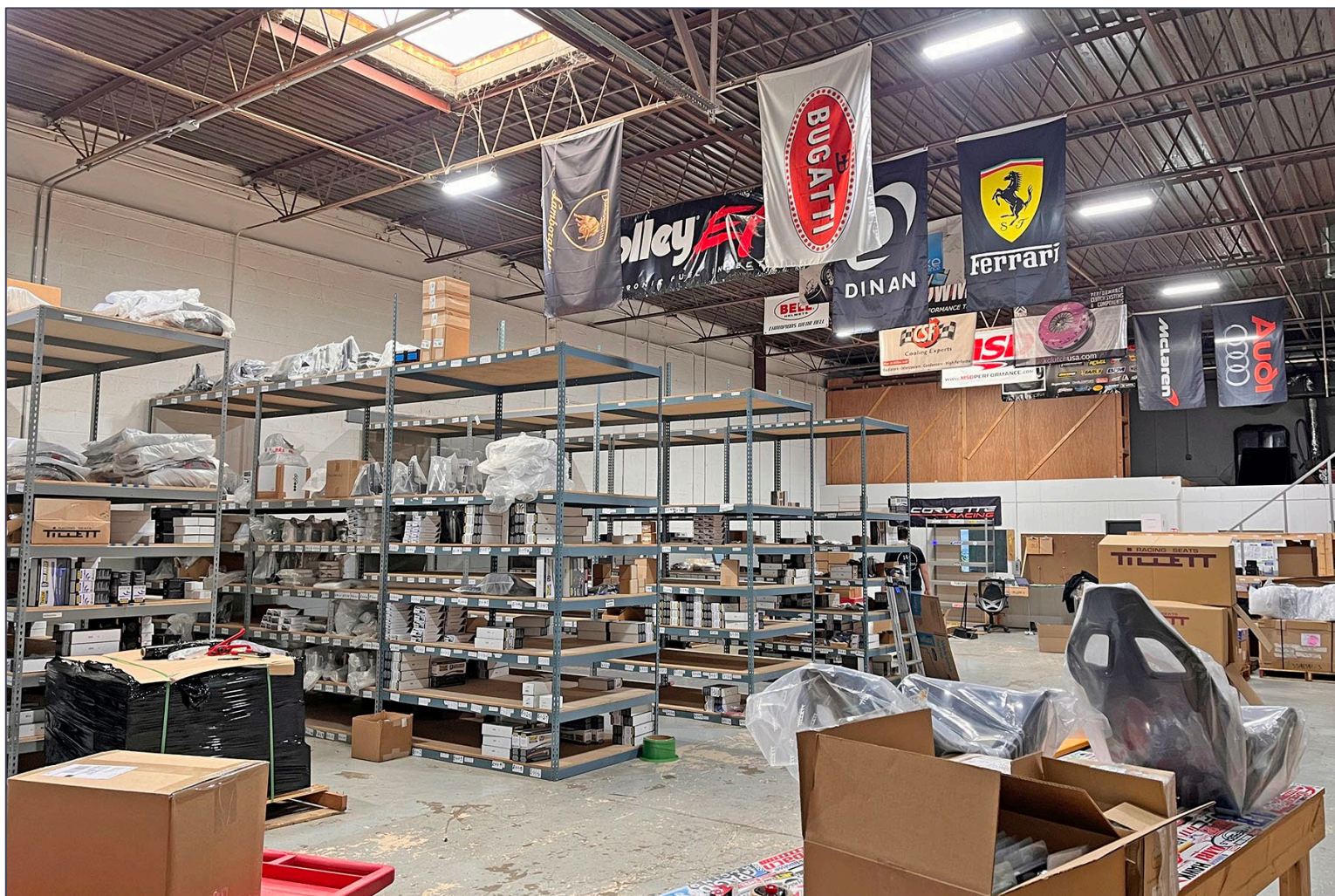
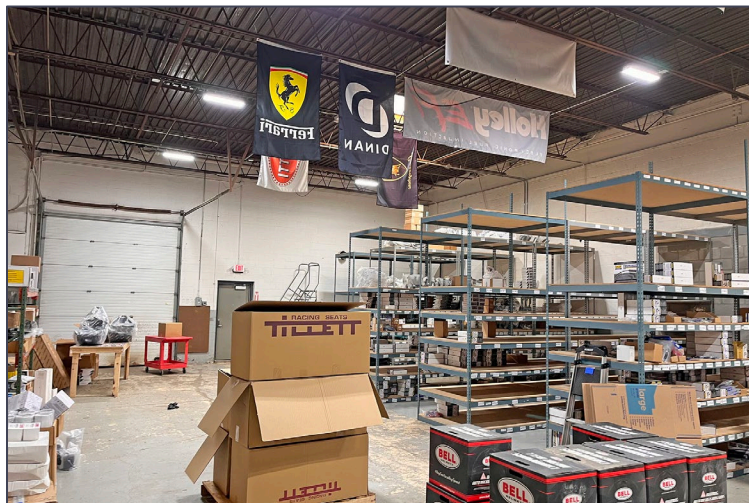
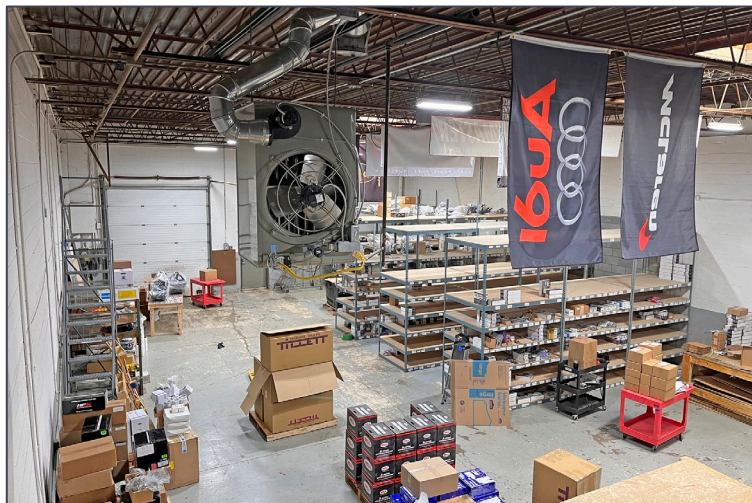


# 1307 & 1407 Allen Drive - Troy, Michigan

## Industrial For Lease

3,200 – 4,000  
Square Feet  
AVAILABLE

### Interior Photos – Unit 1407 G



For more information, please contact:

**KRIS PAWLOWSKI**  
(248) 359 3801  
kpawlowski@signatureassociates.com

**JOHN DROZE**  
(248) 948 4191  
jdroze@signatureassociates.com

**SIGNATURE ASSOCIATES**  
One Towne Square, Suite 1200  
Southfield, MI 48076  
www.signatureassociates.com



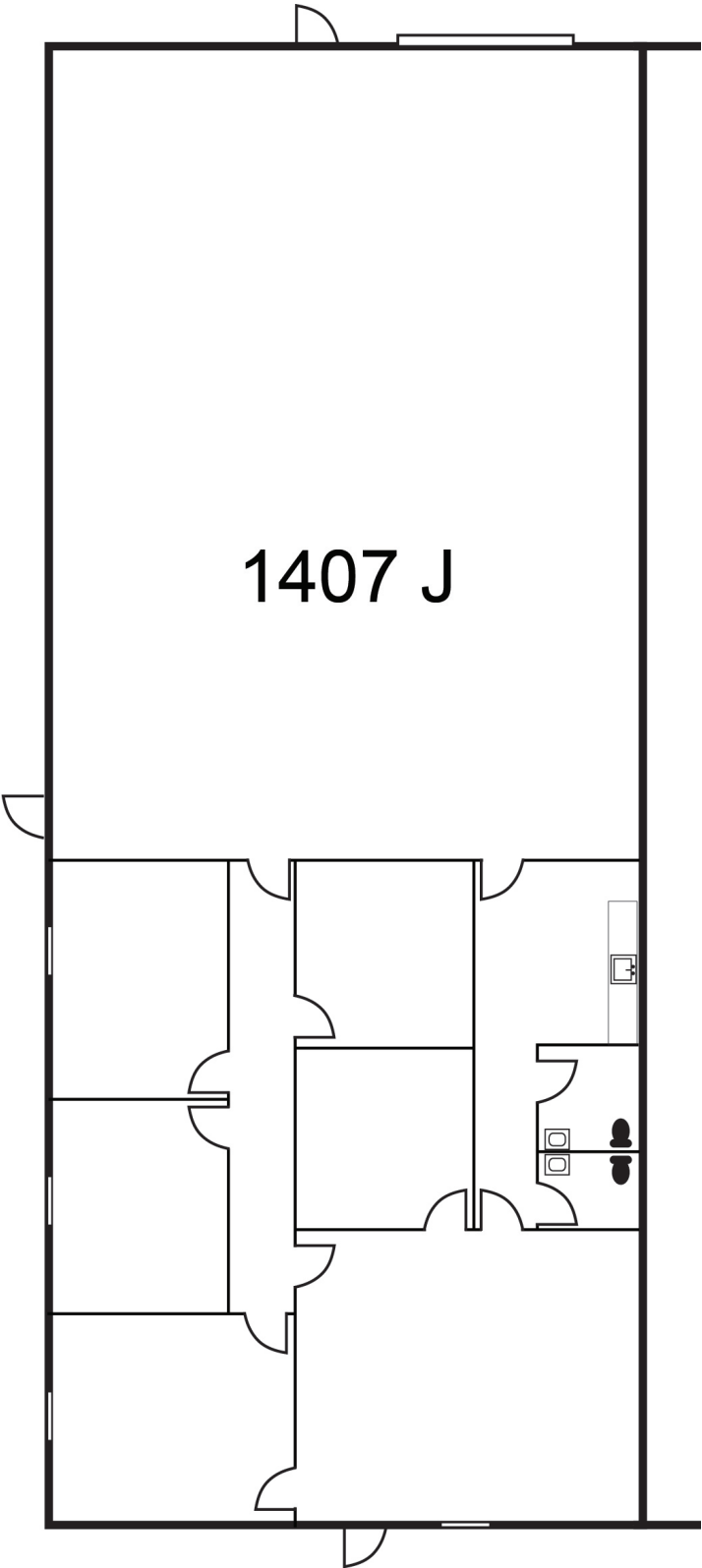
# 1307 & 1407 Allen Drive - Troy, Michigan

Industrial For Lease

3,200 – 4,000  
Square Feet  
AVAILABLE

## Proposed Floor Plan

AVAILABILITY			
UNIT	TOTAL SF	OFFICE SF	RATE
1407 J	4,000	1,600	\$10.95 Gross



For more information, please contact:

**KRIS PAWLOWSKI**  
(248) 359 3801  
kpawlowski@signatureassociates.com

**JOHN DROZE**  
(248) 948 4191  
jdroze@signatureassociates.com

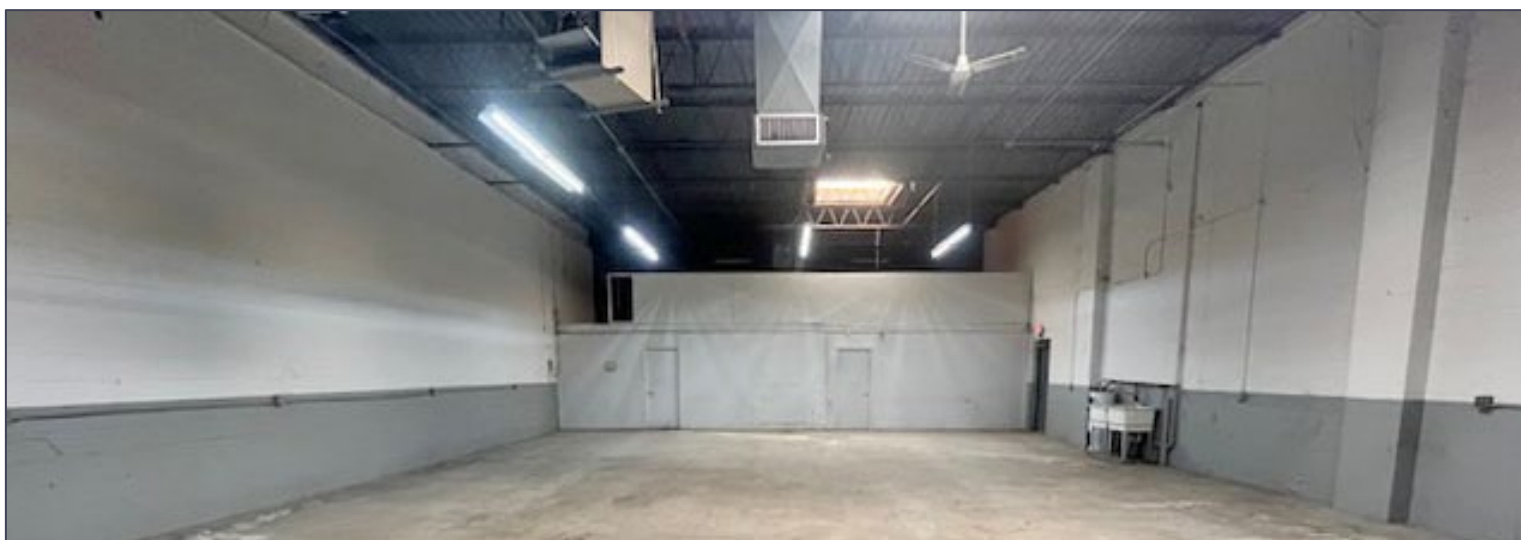
**SIGNATURE ASSOCIATES**  
One Towne Square, Suite 1200  
Southfield, MI 48076  
www.signatureassociates.com

# 1307 & 1407 Allen Drive - Troy, Michigan

## Industrial For Lease

3,200 – 4,000  
Square Feet  
AVAILABLE

### Interior Photos – Unit 1407 J



For more information, please contact:

**KRIS PAWLOWSKI**  
(248) 359 3801  
[kpawlowski@signatureassociates.com](mailto:kpawlowski@signatureassociates.com)

**JOHN DROZE**  
(248) 948 4191  
[jdroze@signatureassociates.com](mailto:jdroze@signatureassociates.com)

**SIGNATURE ASSOCIATES**  
One Towne Square, Suite 1200  
Southfield, MI 48076  
[www.signatureassociates.com](http://www.signatureassociates.com)

Information is subject to verification and no liability for errors or omissions is assumed. Price is subject to change and listing withdrawal.