

2181 E. WALTON BLVD.  
AUBURN HILLS, MICHIGAN

OFFICE SUITES AVAILABLE FOR LEASE  
2,250 Square Feet Available



**SIGNATURE  
ASSOCIATES**  
KNOW SIGNATURE | KNOW RESULTS



## PROPERTY FEATURES

- 2,250 square feet of office space for lease
- Second floor office suite with open floor plan available for lease
- Immediate access to I-75
- Tenant improvement allowance to be determined on case-by-case basis
- Private suite bathrooms
- Monument and building signage available
- Warehouse/storage space could also be made available to a tenant – 22' clear height



For more information, please contact:

**KRIS PAWLOWSKI**  
(248) 359 3801  
kpawlowski@signatureassociates.com

**DAN MORROW**  
(248) 799 3144  
dmorrow@signatureassociates.com

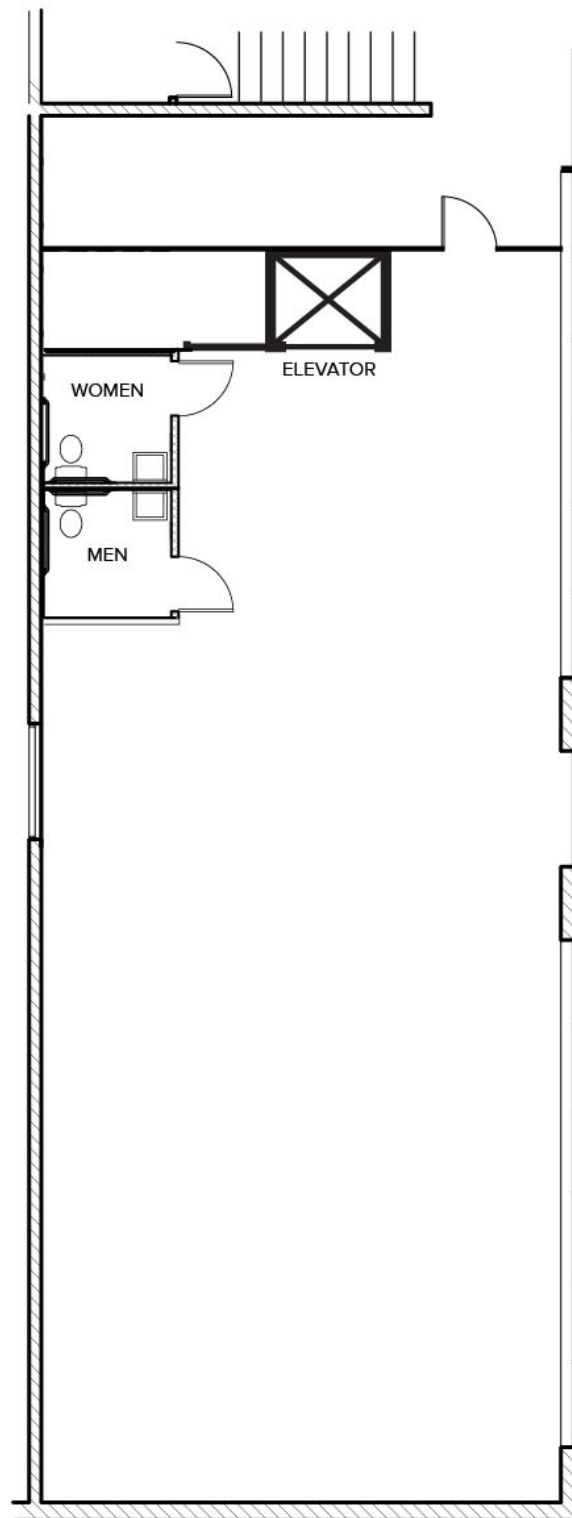
**SIGNATURE ASSOCIATES**  
One Towne Square, Suite 1200  
Southfield, MI 48076  
www.signatureassociates.com

# 2181 E. Walton Blvd. – Auburn Hills, Michigan

## Office For Lease

2,250  
Square Feet  
AVAILABLE

### Second Floor (Suite 400) Floor Plan



For more information, please contact:

**KRIS PAWLOWSKI**  
(248) 359 3801  
kpawlowski@signatureassociates.com

**DAN MORROW**  
(248) 799 3144  
dmorrow@signatureassociates.com

**SIGNATURE ASSOCIATES**  
One Towne Square, Suite 1200  
Southfield, MI 48076  
www.signatureassociates.com



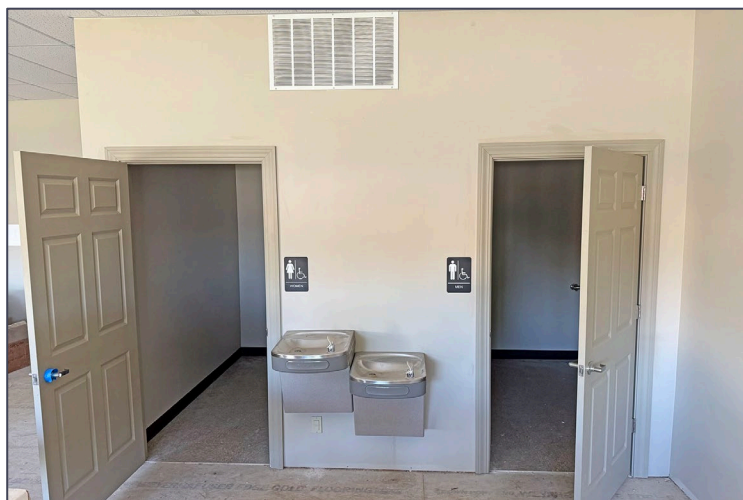
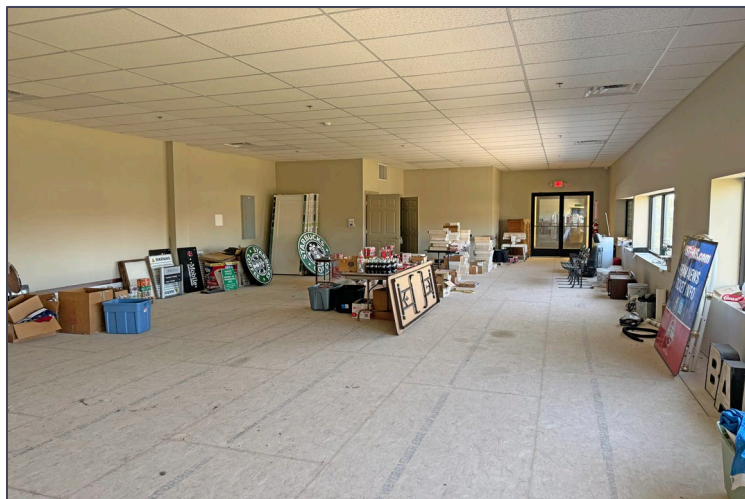
# 2181 E. Walton Blvd. – Auburn Hills, Michigan

## Office For Lease

2,250  
Square Feet  
AVAILABLE

### Second Floor (Suite 400)

2,250 square foot office suite available for lease



For more information, please contact:

**KRIS PAWLOWSKI**  
(248) 359 3801  
kpawlowski@signatureassociates.com

**DAN MORROW**  
(248) 799 3144  
dmorrow@signatureassociates.com

**SIGNATURE ASSOCIATES**  
One Towne Square, Suite 1200  
Southfield, MI 48076  
www.signatureassociates.com

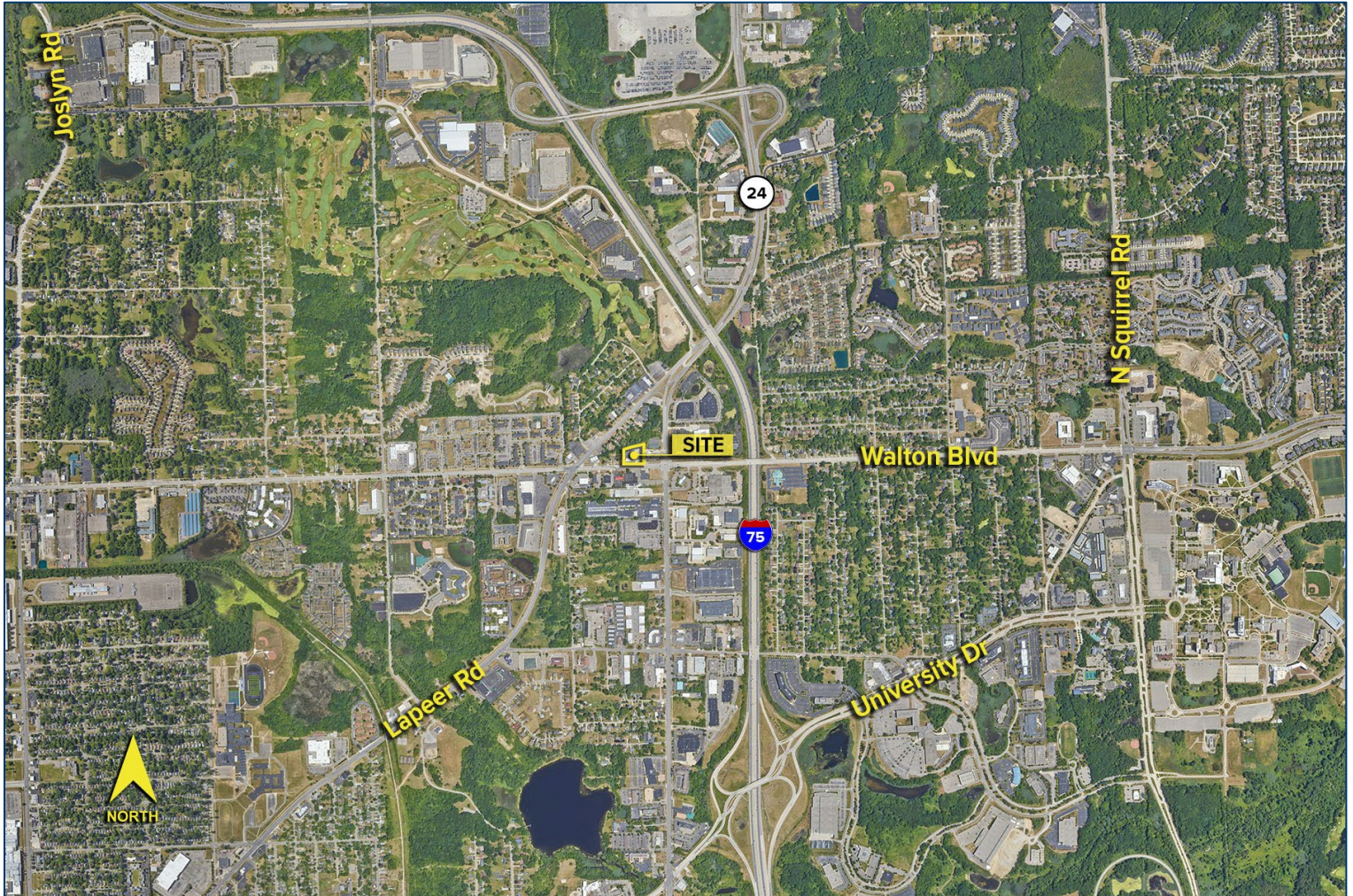


# 2181 E. Walton Blvd. – Auburn Hills, Michigan

## Office For Lease

2,250  
Square Feet  
AVAILABLE

Aerial



For more information, please contact:

**KRIS PAWLOWSKI**  
(248) 359 3801  
kpawlowski@signatureassociates.com

**DAN MORROW**  
(248) 799 3144  
dmorrow@signatureassociates.com

**SIGNATURE ASSOCIATES**  
One Towne Square, Suite 1200  
Southfield, MI 48076  
www.signatureassociates.com