

1090 WHEATON DRIVE
TROY, MICHIGAN

INDUSTRIAL FOR SALE
9,053 Square Feet Available



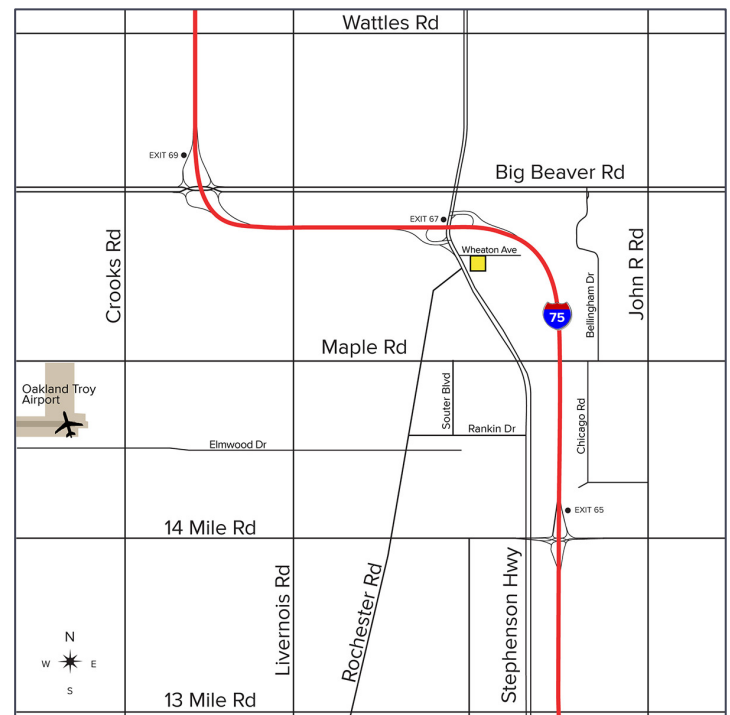
**SIGNATURE
ASSOCIATES**
KNOW SIGNATURE | KNOW RESULTS

RARE DUPLEX BUILDING



PROPERTY FEATURES

- 9,053 square feet available
- 2,000 square feet office
- 14' clear height
- (2) 12'x12' grade level doors
- 240 volts, 3-phase power
- 20 parking spaces
- Rare duplex building with direct access to I-75
- Ideal for a variety of uses
- Great user / investor property
- Sale Price: \$1,150,000



For more information, please contact:

KRIS PAWLOWSKI

(248) 359 3801

kpawlowski@signatureassociates.com

JOE BANYAI

(248) 948 0108

jbanyai@signatureassociates.com

SIGNATURE ASSOCIATES

One Towne Square, Suite 1200

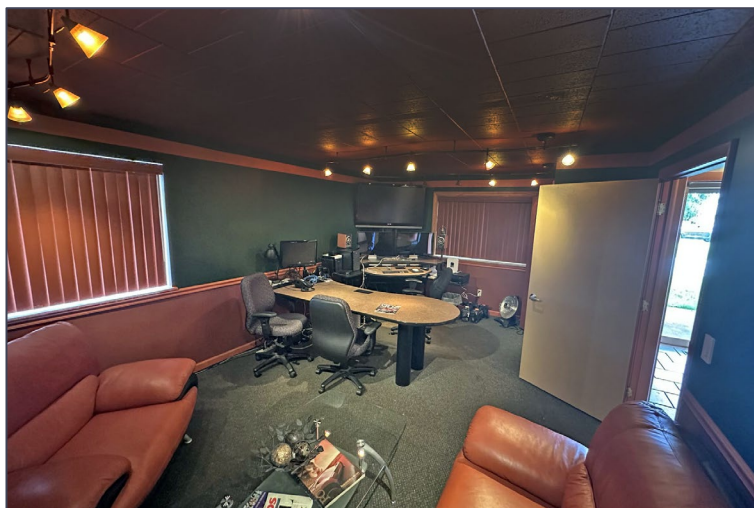
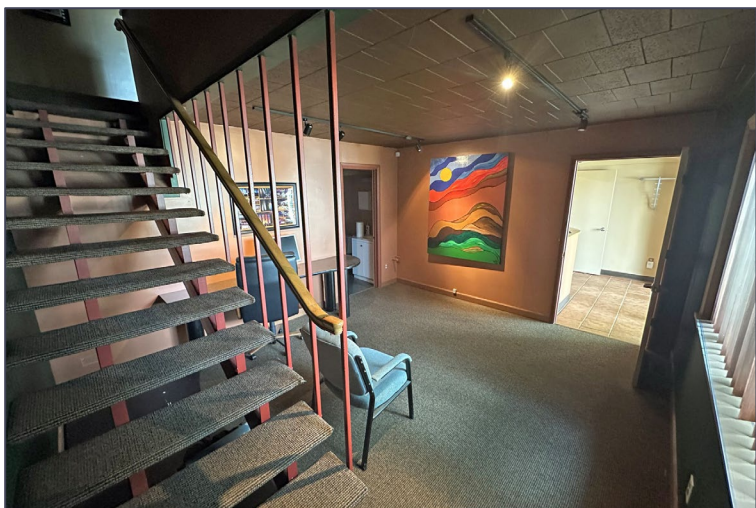
Southfield, MI 48076

www.signatureassociates.com

1090 Wheaton Drive – Troy, Michigan

Industrial For Sale

9,053
Square Feet
AVAILABLE



For more information, please contact:

KRIS PAWLOWSKI

(248) 359 3801

kpawlowski@signatureassociates.com

JOE BANYAI

(248) 948 0108

jbanyai@signatureassociates.com

SIGNATURE ASSOCIATES

One Towne Square, Suite 1200

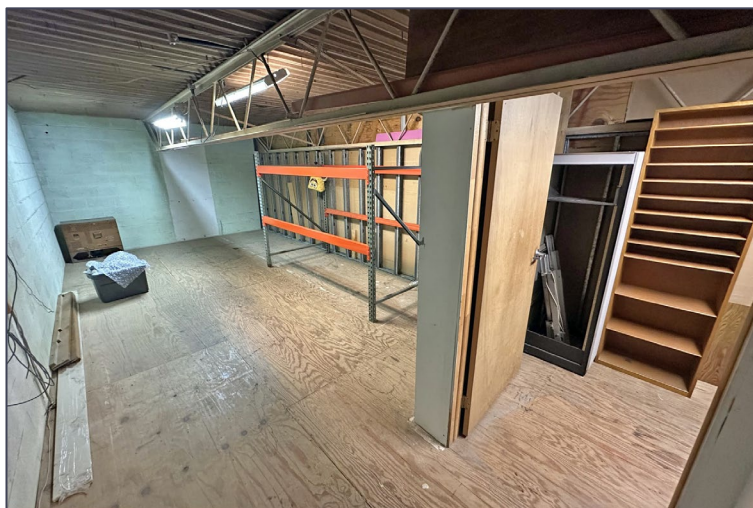
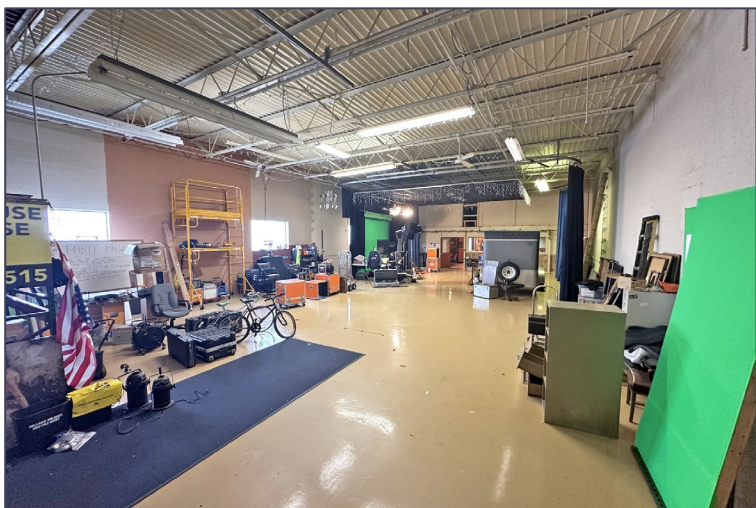
Southfield, MI 48076

www.signatureassociates.com

1090 Wheaton Drive – Troy, Michigan

Industrial For Sale

9,053
Square Feet
AVAILABLE



For more information, please contact:

KRIS PAWLOWSKI
(248) 359 3801
kpawlowski@signatureassociates.com

JOE BANYAI
(248) 948 0108
jbanyai@signatureassociates.com

SIGNATURE ASSOCIATES
One Towne Square, Suite 1200
Southfield, MI 48076
www.signatureassociates.com

1090 Wheaton Drive – Troy, Michigan

Industrial For Sale

9,053
Square Feet
AVAILABLE

East Bay Warehouse Space



For more information, please contact:

KRIS PAWLOWSKI

(248) 359 3801

kpawlowski@signatureassociates.com

JOE BANYAI

(248) 948 0108

jbanyai@signatureassociates.com

SIGNATURE ASSOCIATES

One Towne Square, Suite 1200

Southfield, MI 48076

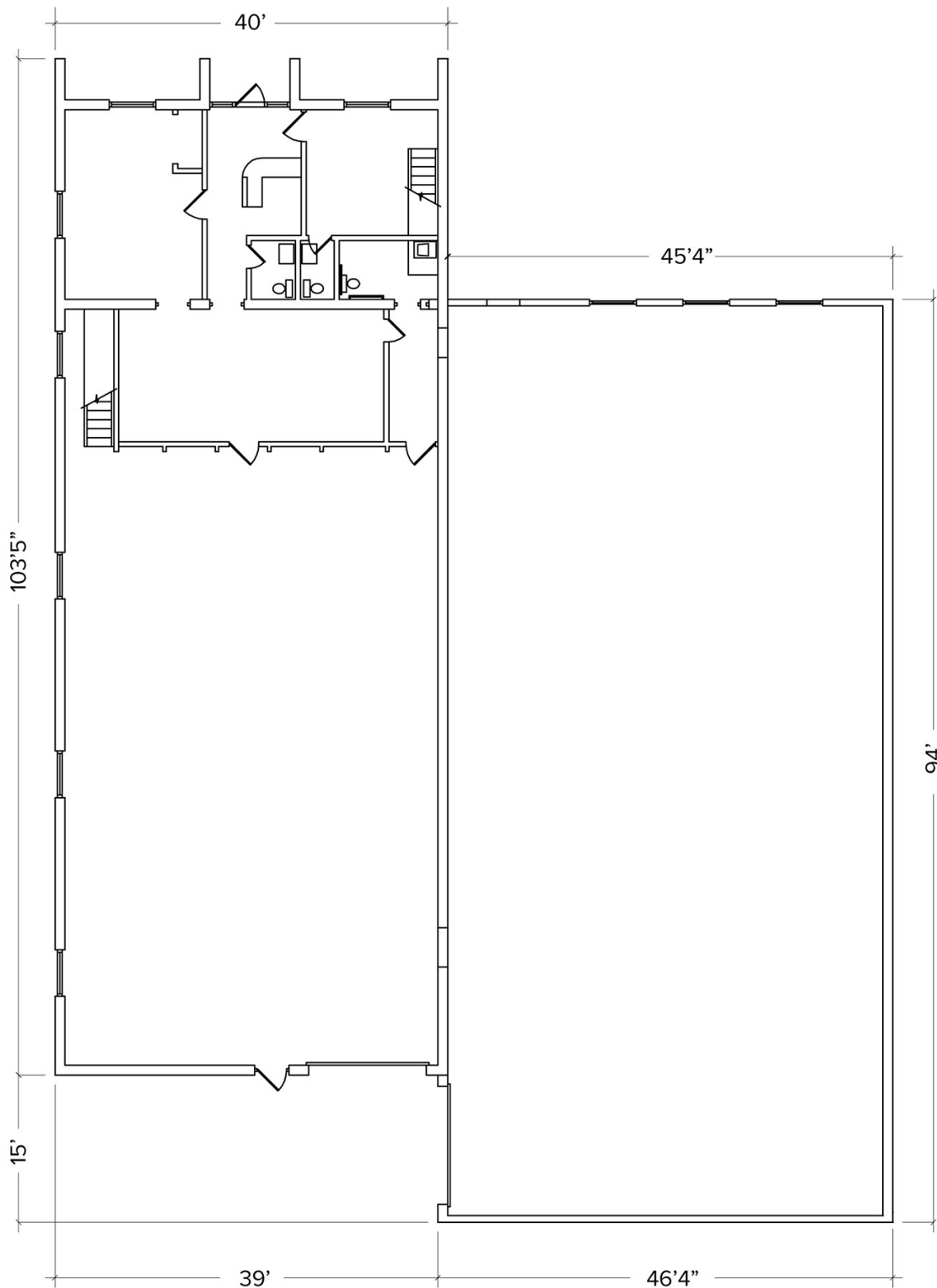
www.signatureassociates.com

1090 Wheaton Drive – Troy, Michigan

Industrial For Sale

9,053
Square Feet
AVAILABLE

Floor Plan



For more information, please contact:

KRIS PAWLOWSKI

(248) 359 3801

kpawlowski@signatureassociates.com

JOE BANYAI

(248) 948 0108

jbanyai@signatureassociates.com

SIGNATURE ASSOCIATES

One Towne Square, Suite 1200

Southfield, MI 48076

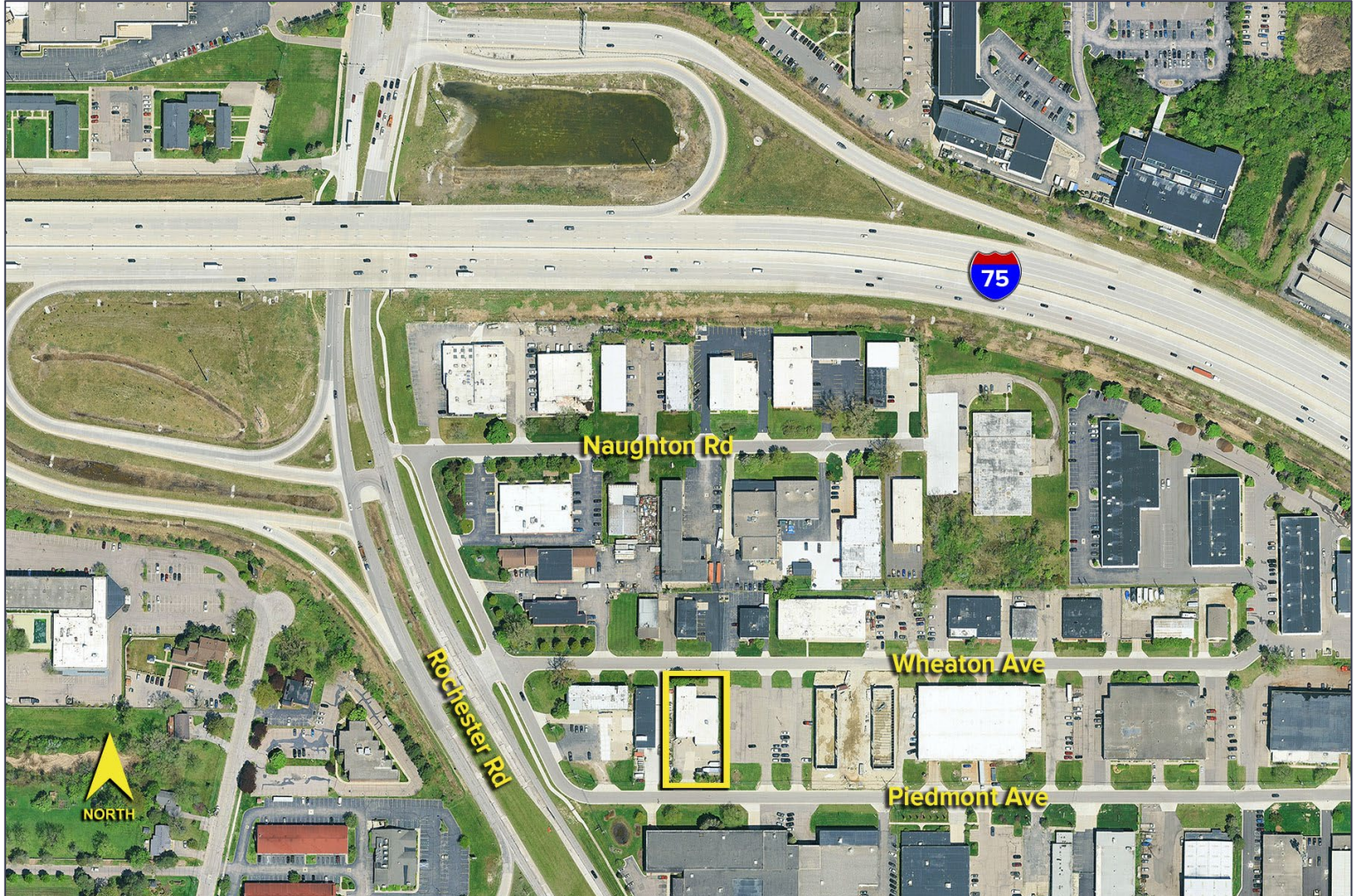
www.signatureassociates.com

1090 Wheaton Drive – Troy, Michigan

Industrial For Sale

9,053
Square Feet
AVAILABLE

Aerial



For more information, please contact:

KRIS PAWLOWSKI
(248) 359 3801
kpawlowski@signatureassociates.com

JOE BANYAI
(248) 948 0108
jbanyai@signatureassociates.com

SIGNATURE ASSOCIATES
One Towne Square, Suite 1200
Southfield, MI 48076
www.signatureassociates.com