



Lake Lansing Rd (13,760 VPD)

Lease Rate

\$10.00/SF

Modified Gross
(+ Utilities & Janitorial)

FOR LEASE

Industrial/Warehouse Space

**1335 Lake Lansing Rd
Lansing, MI**

Property Highlights

- 3,600 SF Located on 0.77 Acres
- Rear Section of 7,000 SF Building, Behind R&R Collision
- Excellent Location on Lake Lansing Retail Corridor with 13,760 Vehicles Per Day
- Ceiling: 16' 5" Clear Height
- (2) Ton Crane
- Overhead Doors: (1) 14' x 14' and (1) 12' x 12'
- (2) Finished Offices and (1) Bathroom
- Fenced-in Storage Yard
- Easy Access: 0.9 Miles West of US-127 at Lake Lansing Road Exit
- Parcel # 01-01-03-378-002
- IND-1 (Industrial)

CONTACT US



Jeff Ridenour

Associate Vice President
517 204 7902
jeff.ridenour@colliers.com

Colliers Lansing

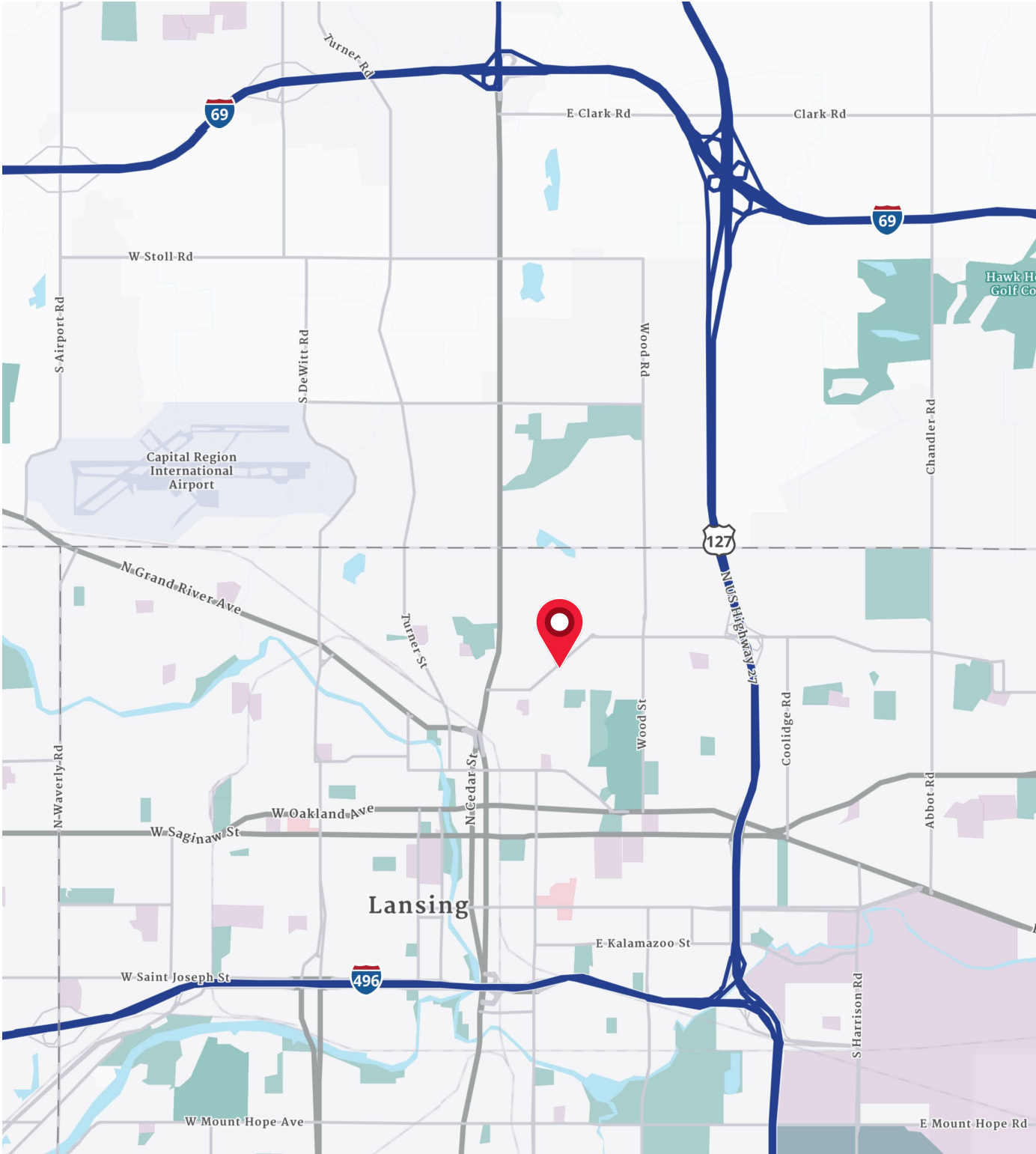
2501 Coolidge Rd, Suite 300
East Lansing, MI 48823
colliers.com/lansing



3,600 SF INDUSTRIAL/WAREHOUSE SPACE FOR LEASE

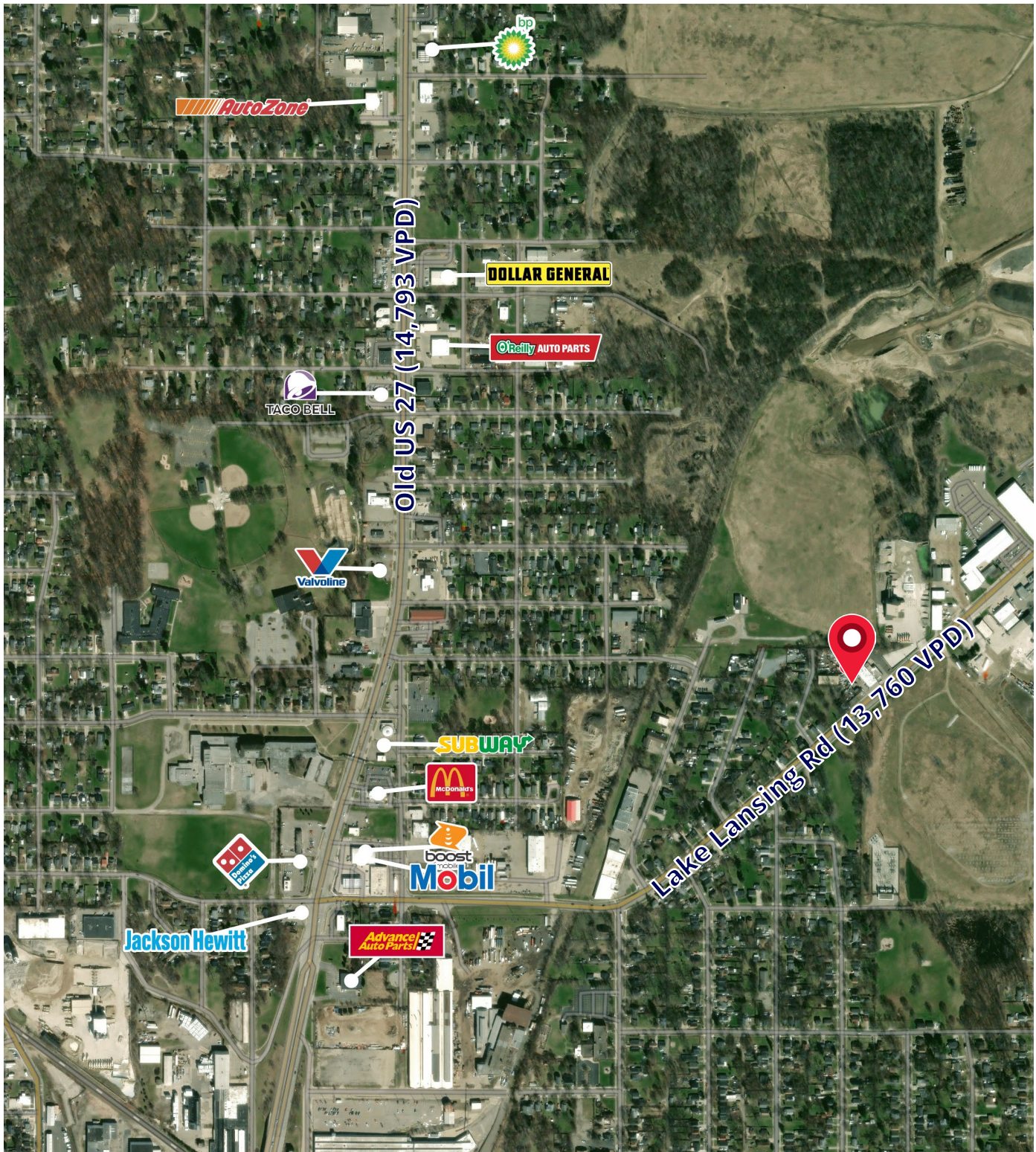


Location Map



3,600 SF INDUSTRIAL/WAREHOUSE SPACE FOR LEASE

Merchant Map



Demographics

CURRENT YEAR SUMMARY	1 MILE RADIUS	3 MILE RADIUS	5 MILE RADIUS
Total Population	7,140	74,562	161,974
Total Households	3,120	33,402	68,215
Total Housing Units	3,447	36,796	74,526
Owner Occupied	64.5%	47.5%	54.3%
Average Household Size	2.3	2.1	2.1
Median Age	37.0	31.2	30.8
2020 – 2025 Population: Annual Growth Rate (CAGR)	-17.5%	1.6	-0.1%
5 YEAR PROJECTED TRENDS: ANNUAL RATE			
Population	-1.4%	0.4%	0.0%
Households	0.9%	2.9%	2.3%
CURRENT YEAR POPULATION BY SEX			
Male Population / % Male	50.9%	50.0%	49.8%
Female Population / % Female	49.1%	50.0%	50.3%
INCOME & HOUSEHOLDS SUMMARY			
2020 Median Household Income	\$60,979	\$53,181	\$57,628
Average Household Income	\$83,155	\$73,999	\$80,044
Per Capita Income	\$36,116	\$33,206	\$33,937
SUMMARY BUSINESS DATA			
Total Businesses	335	4,025	6,775
Total Employees	4,465	88,279	128,496
Daytime Population: Workers	7,201	121,754	208,234
Unemployment Rate	8.6%	6.9%	6.3%

Data Notes:

- Household population includes persons not residing in group quarters. Average Household Size is the household population divided by total households. Persons in families include the householder and persons related to the householder by birth, marriage, or adoption.
- Income represents the preceding year, expressed in current dollars. Household income includes wage and salary earnings, interest dividends, net rents, pensions, SSI and welfare payments, child support, and alimony.
- Per Capita Income represents the income received by all persons aged 15 years and over divided by the total population.



Jeff Ridenour
Associate Vice President
517 204 7902
jeff.ridenour@colliers.com