



Granger Mall

408-426 Elmwood Dr
Lansing, Michigan 48917

Property Highlights

- Across from Meijer, Lansing Mall and other major retailers
- Great exposure on highly traveled avenue
- Immediate occupancy
- Professionally managed property
- Priced right for your retail/office business
- Beautiful new facade
- On site parking in front and back

Offering Summary

Lease Rate:	\$12.00 SF/yr (NNN)
Building Size:	11,120 SF
Available SF:	1,000 - 3,300 SF

Spaces	Lease Rate	Space Size
Suite 410	\$12.00 SF/yr	3,300 SF
Suite 418	\$12.00 SF/yr	1,000 SF
Suite 422	\$12.00 SF/yr	1,430 SF

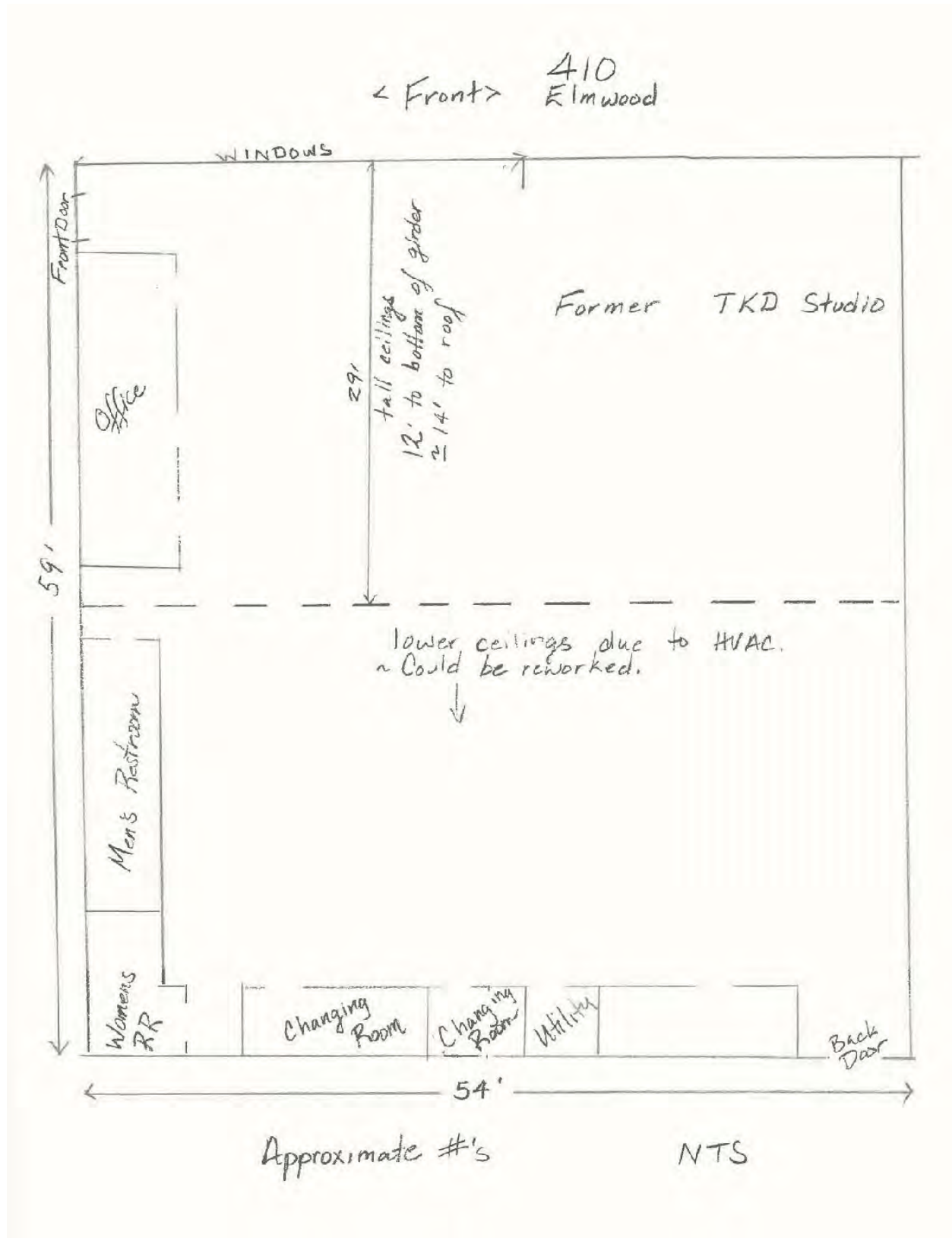
For More Information

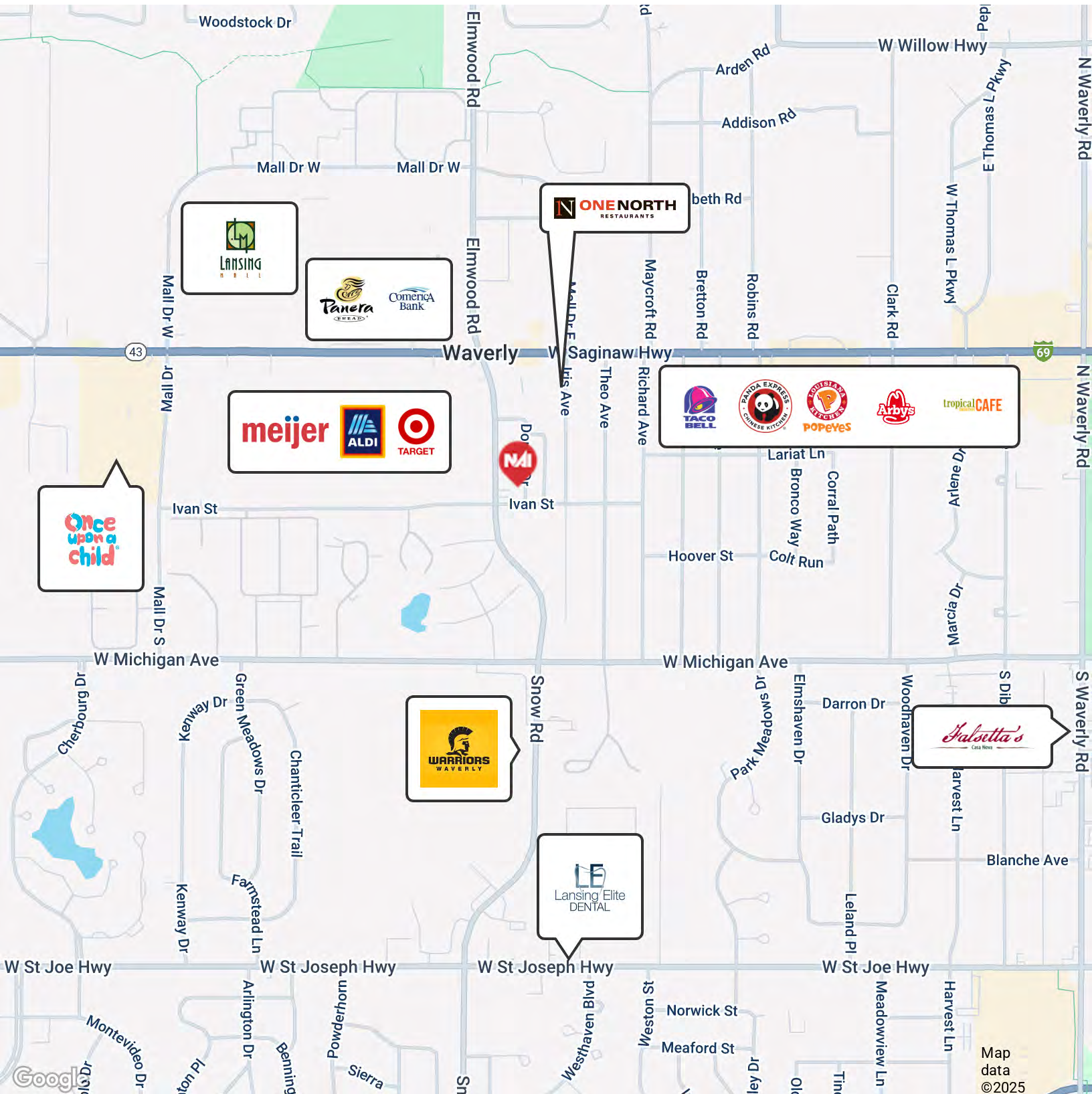


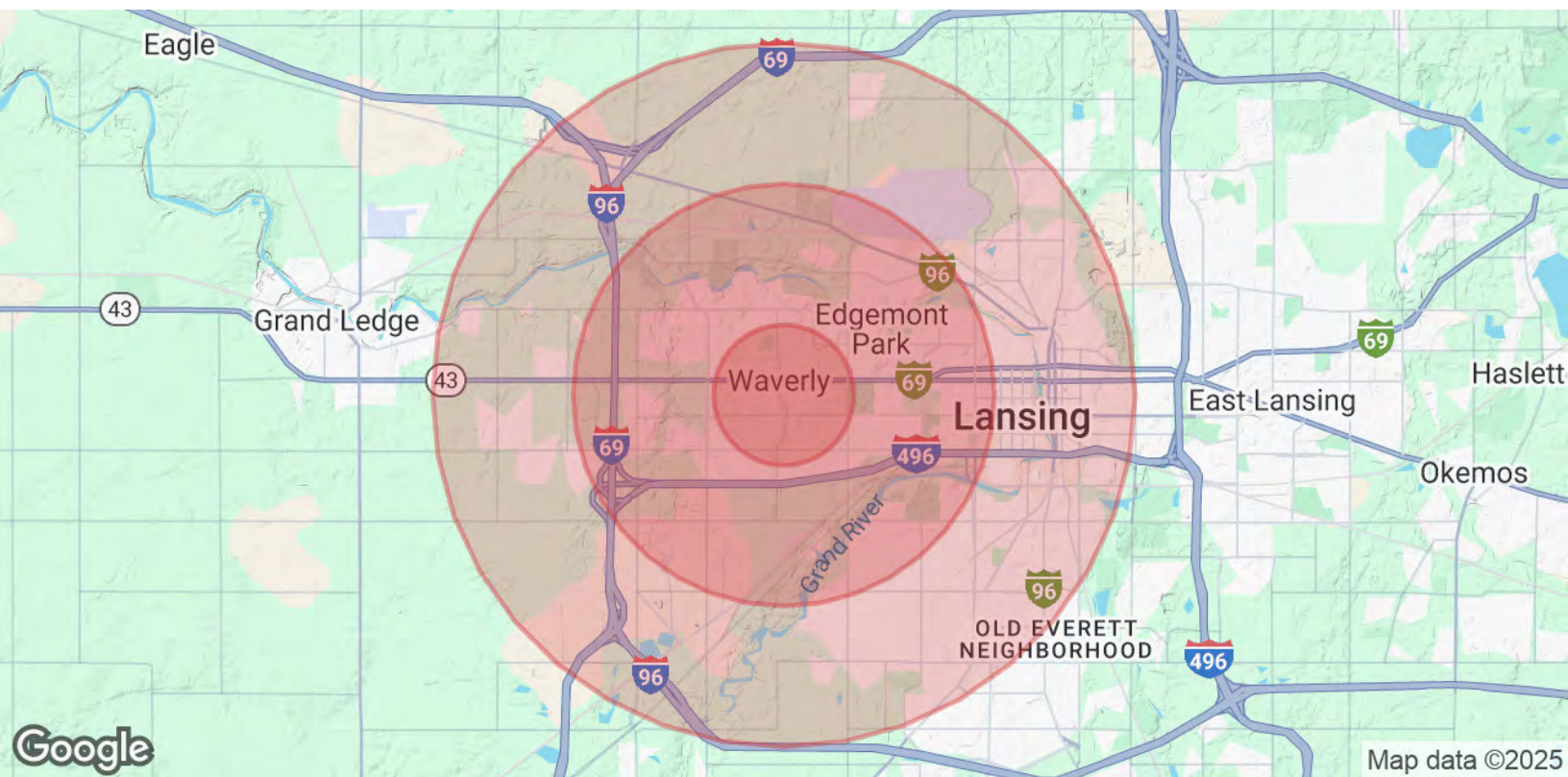
Amanda Hopper

Commercial Advisor, CCIM
O: 517 487 9222 | C: 517 927 9626
ahopper@naimidmichigan.com









Population	1 Mile	3 Miles	5 Miles
Total Population	9,904	49,068	116,768
Average Age	39.2	39.1	36.3
Average Age (Male)	37.1	36.5	34.0
Average Age (Female)	41.9	41.1	38.5
Households & Income	1 Mile	3 Miles	5 Miles
Total Households	4,479	21,662	50,178
# of Persons per HH	2.2	2.3	2.3
Average HH Income	\$63,125	\$62,085	\$55,441
Average House Value	\$190,464	\$177,153	\$151,492

2020 American Community Survey (ACS)