

37473-37515 SCHOOLCRAFT
LIVONIA, MICHIGAN

HI-TECH FOR LEASE
3,600 Square Foot Suite Available



**SIGNATURE
ASSOCIATES**
KNOW SIGNATURE | KNOW RESULTS

RYDER INDUSTRIAL CENTER



PROPERTY FEATURES

- Four 3,600 square foot suites available
- (1) 10x12 grade level door per unit
- Zoned Light Industrial
- Professionally managed complex centrally located just west of Newburgh and with easy access to I-96 & I-275
- Renovations underway – Including new LED lights, A/C & heating units, paint, carpet, epoxy floors, and restroom fixtures
- Lease Rate: \$11.42/sq. ft. G + U



For more information, please contact:

CHRISTOPHER M. D'ANGELO
(248) 948 0109
cdangelo@signatureassociates.com

JASON STOUGH
(248) 948 4180
jstough@signatureassociates.com

SIGNATURE ASSOCIATES
One Towne Square, Suite 1200
Southfield, MI 48076
www.signatureassociates.com

37473-37515 Schoolcraft Rd. - Livonia, Michigan

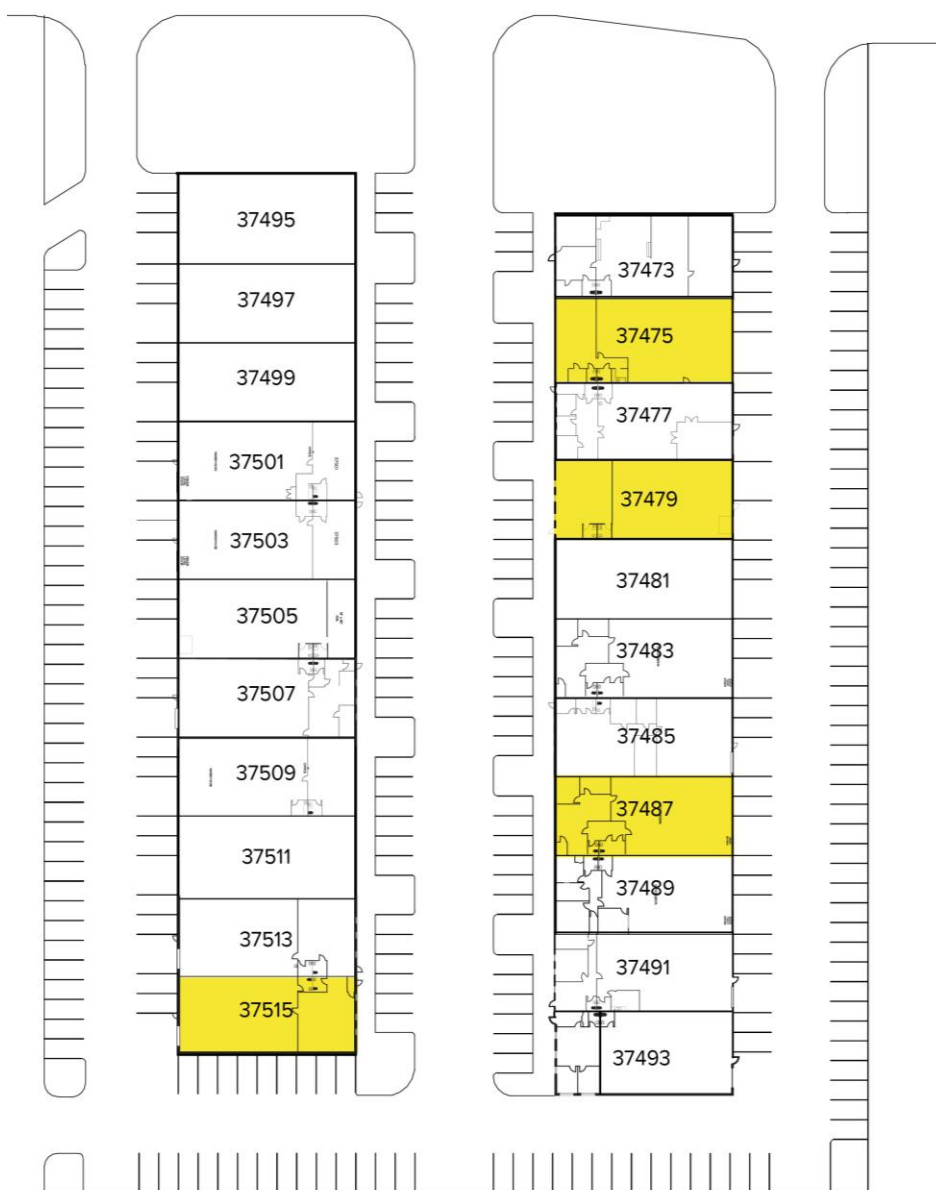
Hi-Tech For Lease

3,600
Square Feet
AVAILABLE

Site Plan

AVAILABILITY				
UNIT	TOTAL SF	OFFICE SF	RATE	DATE AVAIL.
37475	3,600	1,100	\$11.42 G + U	Immediately
37479	3,600	900	\$11.42 G + U	Immediately
37487	3,600	720	\$11.42 G + U	Immediately
37515	3,600	1,080	\$11.42 G + U	Immediately

SCHOOLCRAFT ROAD



For more information, please contact:

CHRISTOPHER M. D'ANGELO
(248) 948 0109
cdangelo@signatureassociates.com

JASON STOUGH
(248) 948 4180
jstough@signatureassociates.com

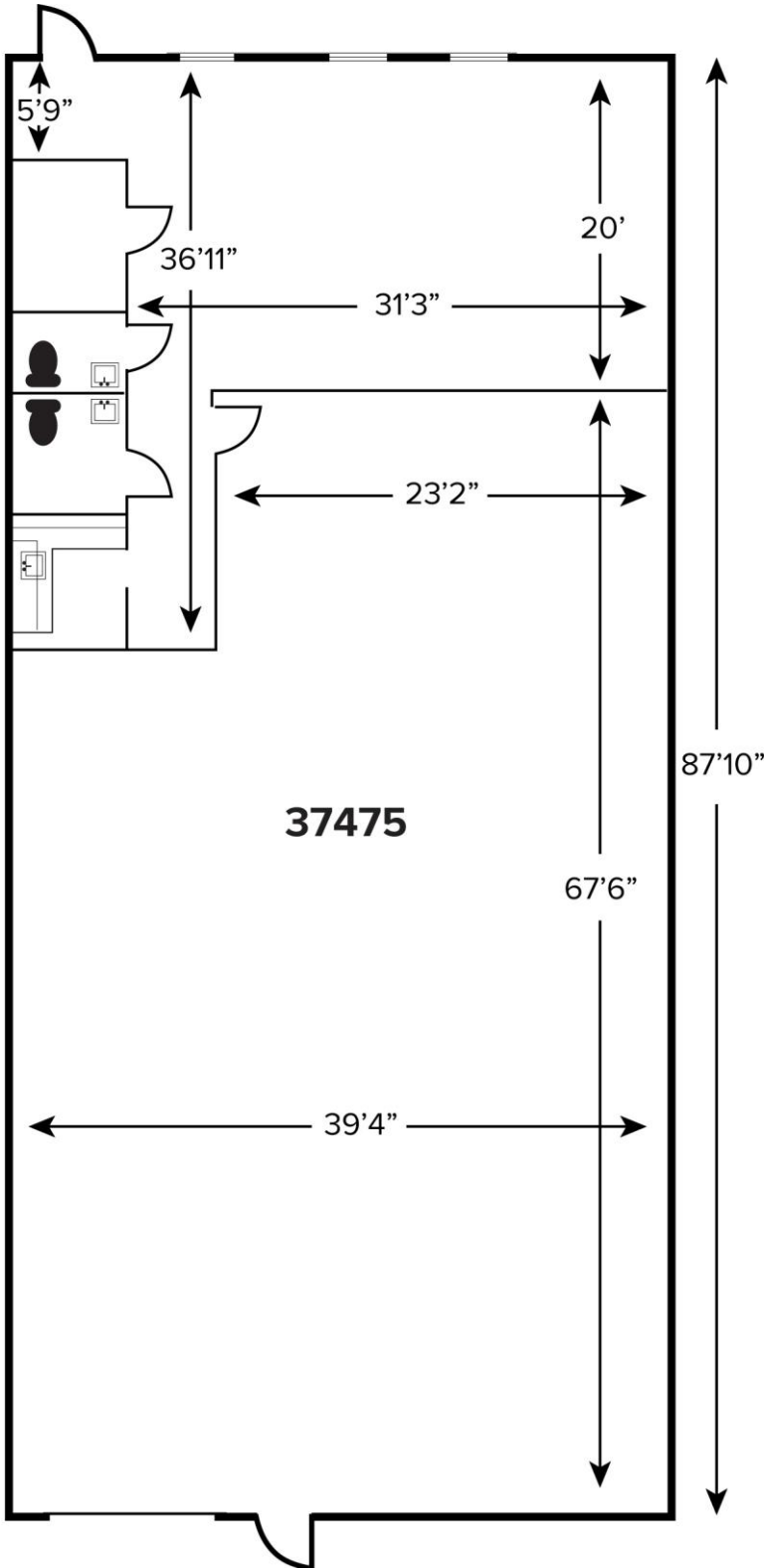
SIGNATURE ASSOCIATES
One Towne Square, Suite 1200
Southfield, MI 48076
www.signatureassociates.com

37473-37515 Schoolcraft Rd. - Livonia, Michigan

Hi-Tech For Lease

3,600
Square Feet
AVAILABLE

Floor Plan



For more information, please contact:

CHRISTOPHER M. D'ANGELO
(248) 948 0109
cdangelo@signatureassociates.com

JASON STOUGH
(248) 948 4180
jstough@signatureassociates.com

SIGNATURE ASSOCIATES
One Towne Square, Suite 1200
Southfield, MI 48076
www.signatureassociates.com

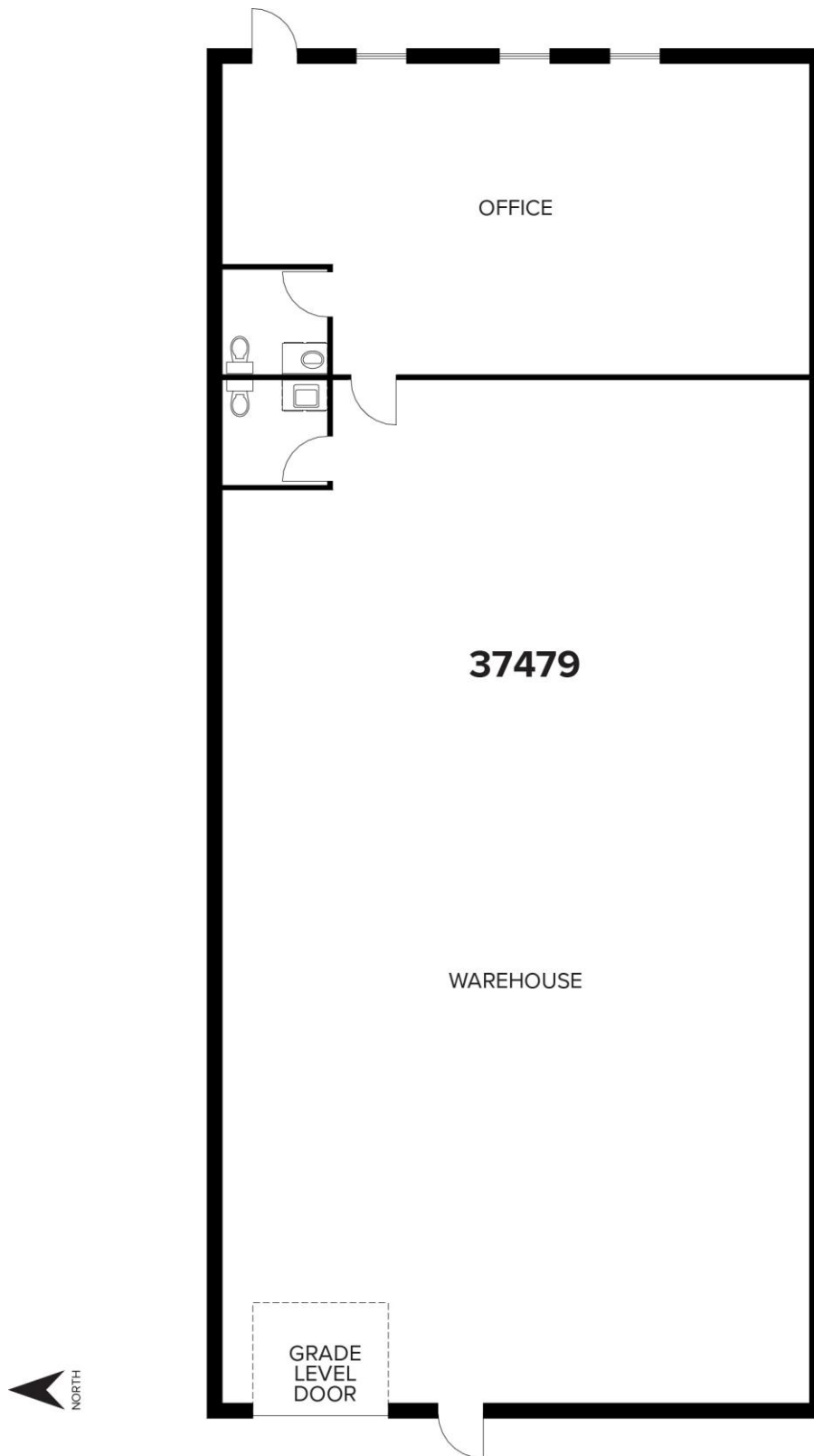
Information is subject to verification and no liability for errors or omissions is assumed. Price is subject to change and listing withdrawal.

37473-37515 Schoolcraft Rd. - Livonia, Michigan

Hi-Tech For Lease

3,600
Square Feet
AVAILABLE

Floor Plan



For more information, please contact:

CHRISTOPHER M. D'ANGELO

(248) 948 0109

cdangelo@signatureassociates.com

JASON STOUGH

(248) 948 4180

jstough@signatureassociates.com

SIGNATURE ASSOCIATES

One Towne Square, Suite 1200

Southfield, MI 48076

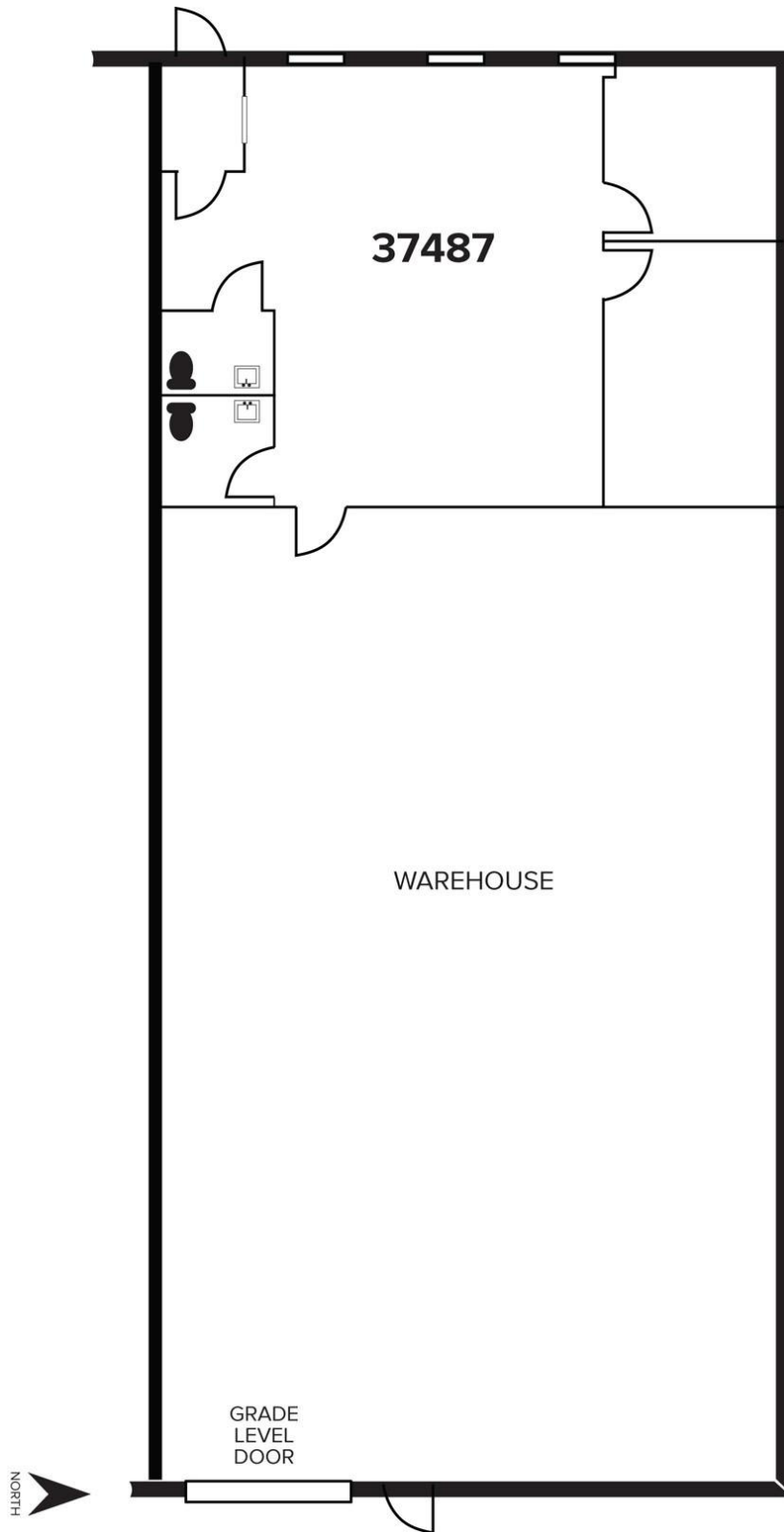
www.signatureassociates.com

37473-37515 Schoolcraft Rd. - Livonia, Michigan

Hi-Tech For Lease

3,600
Square Feet
AVAILABLE

Floor Plan



For more information, please contact:

CHRISTOPHER M. D'ANGELO

(248) 948 0109

cdangelo@signatureassociates.com

JASON STOUGH

(248) 948 4180

jstough@signatureassociates.com

SIGNATURE ASSOCIATES

One Towne Square, Suite 1200

Southfield, MI 48076

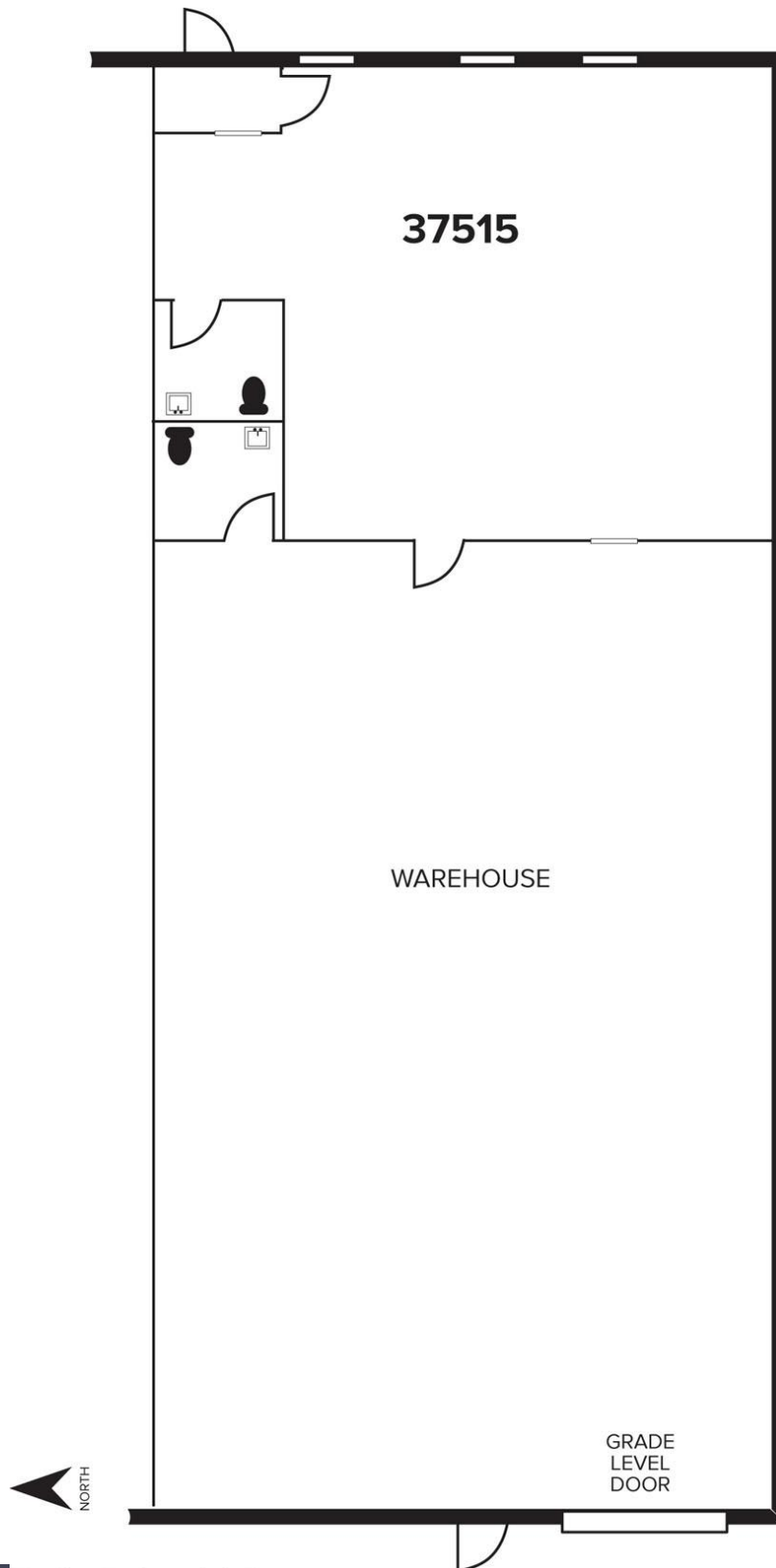
www.signatureassociates.com

37473-37515 Schoolcraft Rd. - Livonia, Michigan

Hi-Tech For Lease

3,600
Square Feet
AVAILABLE

Floor Plan



For more information, please contact:

CHRISTOPHER M. D'ANGELO
(248) 948 0109
cdangelo@signatureassociates.com

JASON STOUGH
(248) 948 4180
jstough@signatureassociates.com

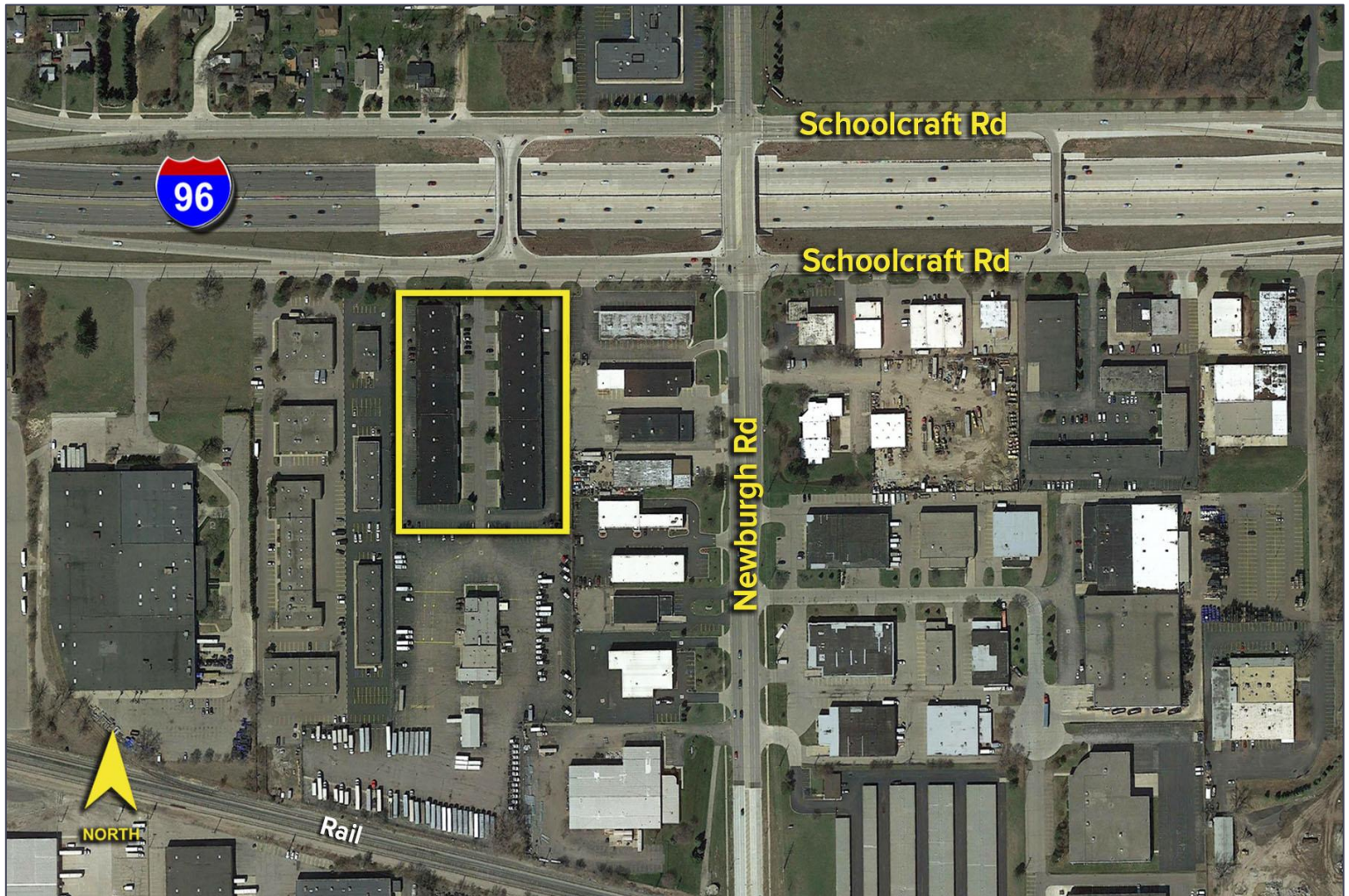
SIGNATURE ASSOCIATES
One Towne Square, Suite 1200
Southfield, MI 48076
www.signatureassociates.com

37473-37515 Schoolcraft Rd. - Livonia, Michigan

Hi-Tech For Lease

3,600
Square Feet
AVAILABLE

Aerial



For more information, please contact:

CHRISTOPHER M. D'ANGELO
(248) 948 0109
cdangelo@signatureassociates.com

JASON STOUGH
(248) 948 4180
jstough@signatureassociates.com

SIGNATURE ASSOCIATES
One Towne Square, Suite 1200
Southfield, MI 48076
www.signatureassociates.com