



## 2025 Abbot Road

East Lansing, Michigan 48823

### Property Highlights

- Conveniently located to MSU at the corners of Lake Lansing and Abbot
- Medical suite 100 is Turn Key Occupancy
- Smaller suites for Yoga, Therapists and Professionals
- Free Parking
- Close to restaurants, golf courses, gas stations and E. Lansing

### Offering Summary

Lease Rate:	\$400.00 - 7,012.50 per month (MG)
Building Size:	8,767 SF
Available SF:	190 - 4,950 SF

Spaces	Lease Rate	Space Size
Suite 100	\$17.00 SF/yr	4,950 SF
Suite 200	\$15.00 SF/yr	975 SF
Suite 300	<i>LEASED</i>	
Suite 400	\$400 per month	190 SF
Suite 500	\$400 per month	300 SF

### For More Information

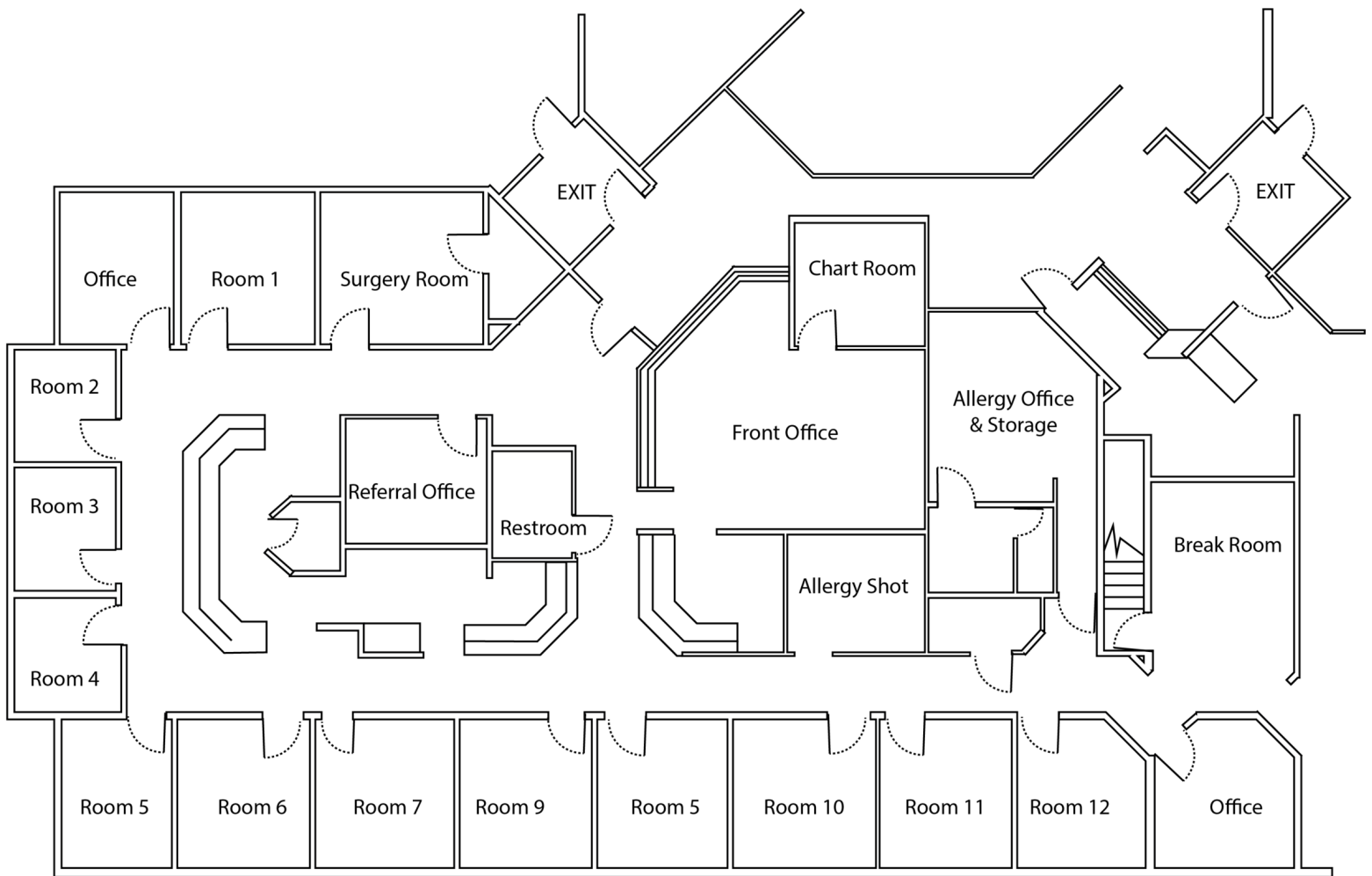


#### Steve Slater

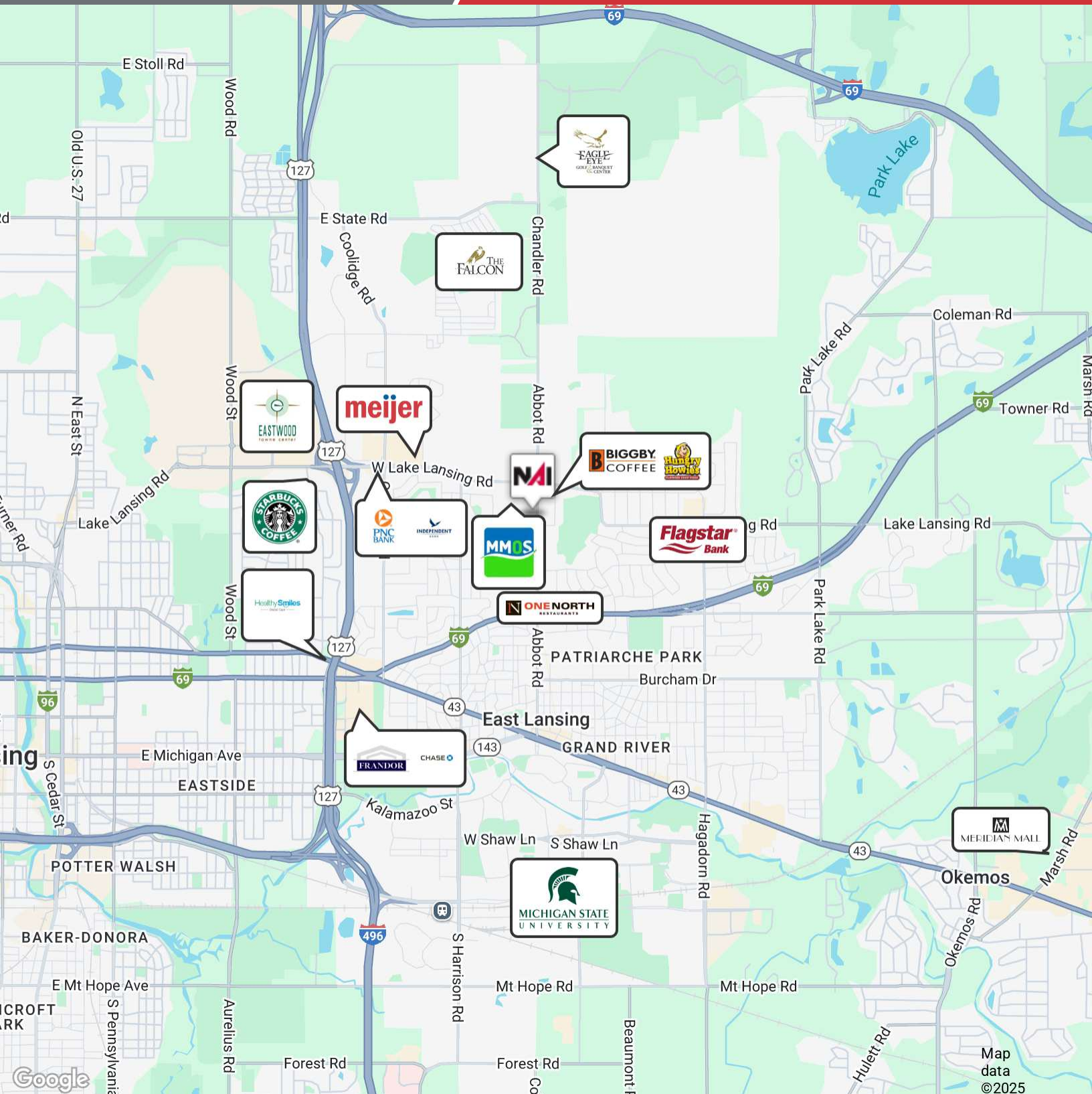
Associate Broker

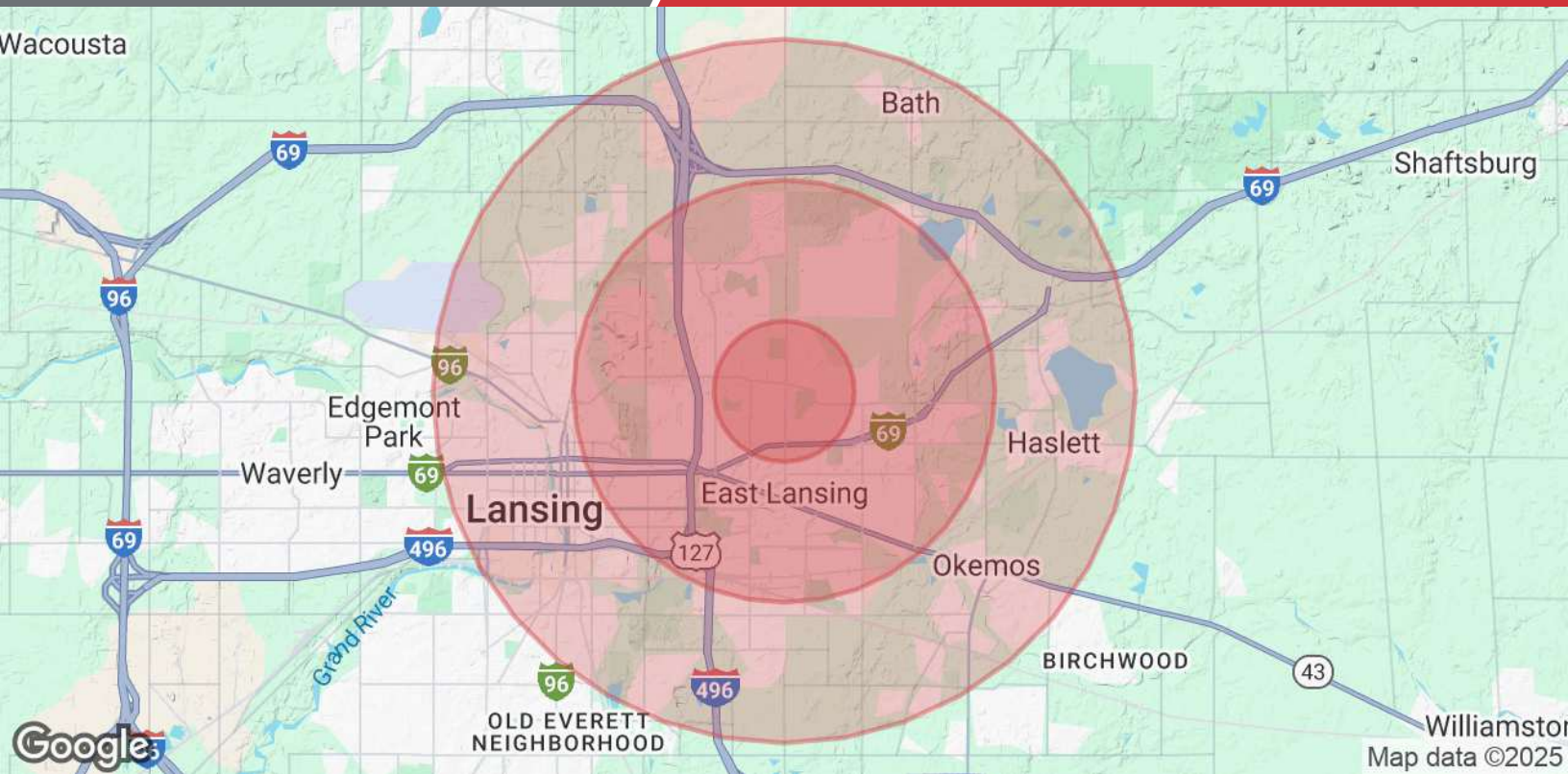
O: 517 487 9222 | C: 517 749 7914

steveslater@naimidmichigan.com









Population	1 Mile	3 Miles	5 Miles
Total Population	12,226	81,955	148,135
Average Age	36	33	36
Average Age (Male)	35	33	35
Average Age (Female)	37	34	36
Households & Income	1 Mile	3 Miles	5 Miles
Total Households	5,823	30,702	60,592
# of Persons per HH	2.1	2.7	2.4
Average HH Income	\$88,542	\$83,508	\$80,699
Average House Value	\$307,002	\$232,536	\$220,856

Demographics data derived from AlphaMap