



Industrial For Lease

Property Name:

Location: 5720-5726 Williams Lake Road

City, State: Waterford, MI

Cross Streets: Airport Road

County: Oakland

Zoning: Light Ind.

BUILDING SIZE / AVAILABILITY

Total Building Sq. Ft.: 104,800

Available Sq. Ft.: 6,996 - 20,000

Building Type: Built

Available Shop Sq. Ft.: 6,996 - 20,000

Available Office Sq. Ft.: To Suit

Mezzanine: N/A

Office Dim: N/A

Shop Dim: N/A

PROPERTY INFORMATION

Clear Height: 14' - 16'

Grade Level Door(s): 3: 12 x 14, 12 x 12

Truckwells or Docks: 1

Exterior Construction: Brick

Structural System: Steel

Air-Conditioning: Office

Heating: GFA/Radiant

Availability: Immediately

Power (Amps/Volts): 240/480 Volts

Multi-Tenant: Yes

Rail: No

Security: Yes

Interior: No

Lighting: Fluorescent/LED

Bay Sizes: N/A

Restrooms: Yes

Cranes: No

Parking: Ample

Year Built: 1991

Sprinklers: No

Signage: Yes

Exterior: No

Roof: Metal

Floors: 6"

Floor Drains: No

Acreage: 10.000

Land Dimensions: N/A

PRICING INFORMATION

Lease Rate: \$6.25

Lease Type: NNN

Lease Term: N/A

Mthly Rate: N/A

Taxes: \$49,454.71 (2024/25)

Parcel #: 13-04-351-013, 018

Imprv Allow: N/A

TD: N/A

Deposit: N/A

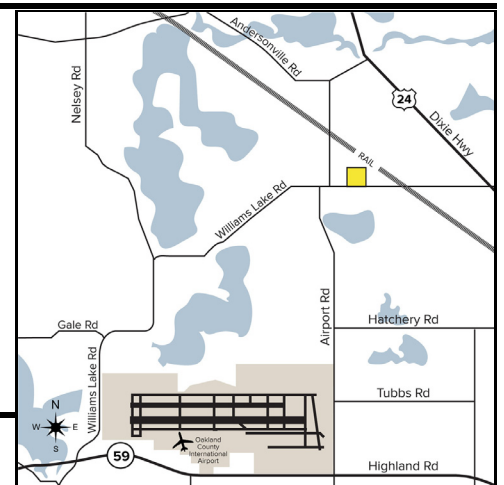
Assessor #: N/A

Options: N/A

Tenant Responsibility: NNN Charges \$1.47/sf (2025)

COMMENTS

Excellent light manufacturing, warehouse, or storage facility. Currently used for a cabinet shop. Outdoor trailer parking is available as well.



Broker: SIGNATURE ASSOCIATES

Agent(s):

Kris Pawlowski, (248) 359-3801, kpawlowski@signatureassociates.com

Gary Stephens, (248) 948-0104, gstephens@signatureassociates.com