

5720 - 5726 WILLIAMS LAKE RD
UNIT #5724
WATERFORD, MICHIGAN



**SIGNATURE
ASSOCIATES**
KNOW SIGNATURE | KNOW RESULTS

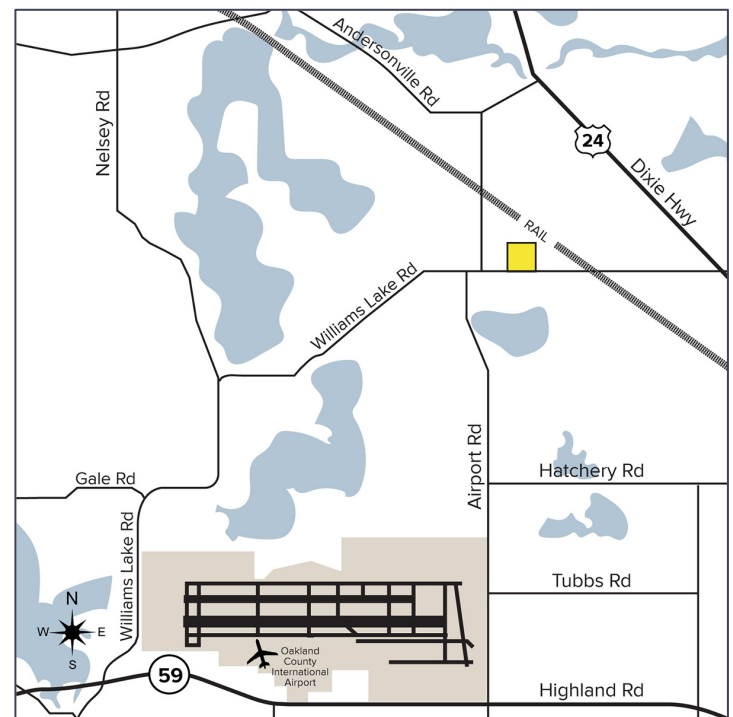
INDUSTRIAL FOR LEASE
6,996 – 20,000 Square Feet Available

PRICE REDUCED



PROPERTY FEATURES

- 6,996 – 20,000 square feet available
 - Suite B: 10,722 square feet
 - Suite C: 6,996 square feet
 - Suite E: 20,000 square feet available with office to suit, (1) dock, & (1) overhead door
- 14' - 16' clear height
- (2) 12' x 14', 12' x 12' grade level doors
- Zoned Light Industrial
- Excellent light manufacturing, warehouse, or storage facility
- 240/480 Volt Power
- Lease Rate: \$6.25/sq. ft. NNN



For more information, please contact:

KRIS PAWLOWSKI
(248) 359 3801
kpawlowski@signatureassociates.com

GARY STEPHENS
(248) 948 0104
gstephens@signatureassociates.com

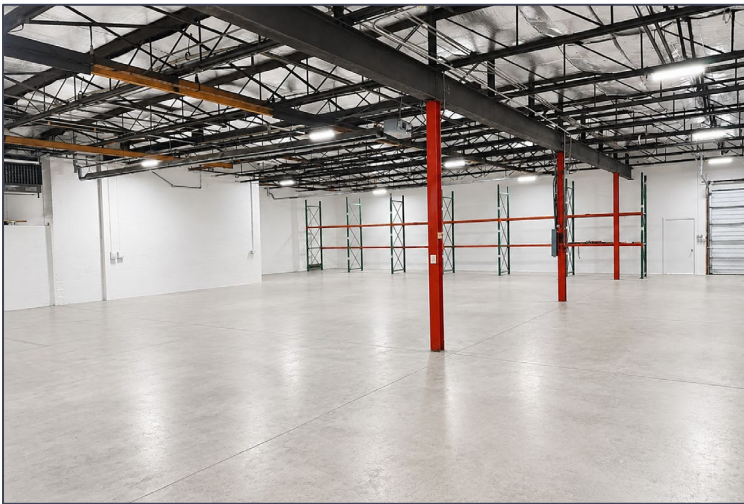
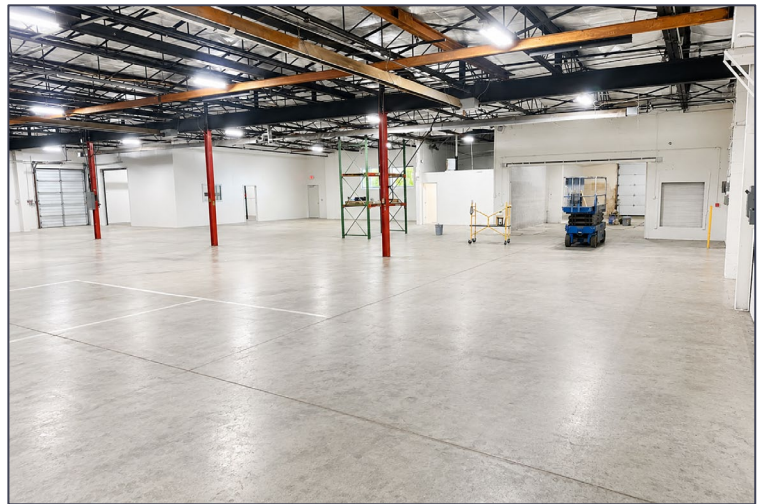
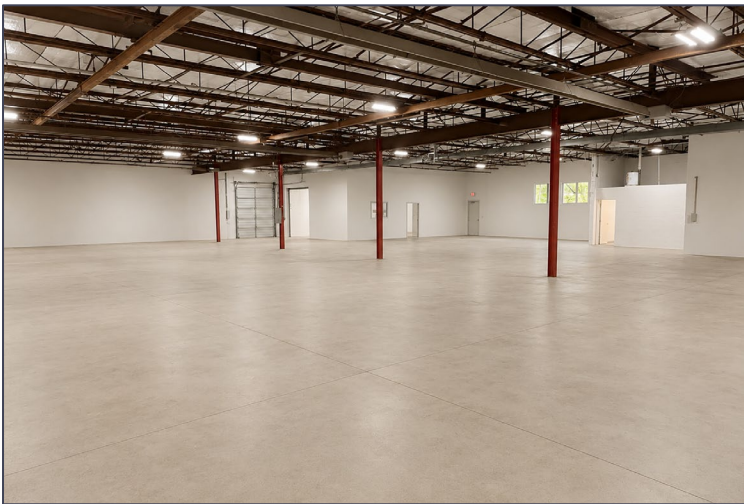
SIGNATURE ASSOCIATES
One Towne Square, Suite 1200
Southfield, MI 48076
www.signatureassociates.com

5720 - 5726 Williams Lake Road – Waterford, Michigan

Industrial For Lease

6,996 - 20,000
Square Feet
AVAILABLE

Interior Photos



For more information, please contact:

KRIS PAWLOWSKI
(248) 359 3801
kpawlowski@signatureassociates.com

GARY STEPHENS
(248) 948 0104
gstephens@signatureassociates.com

SIGNATURE ASSOCIATES
One Towne Square, Suite 1200
Southfield, MI 48076
www.signatureassociates.com

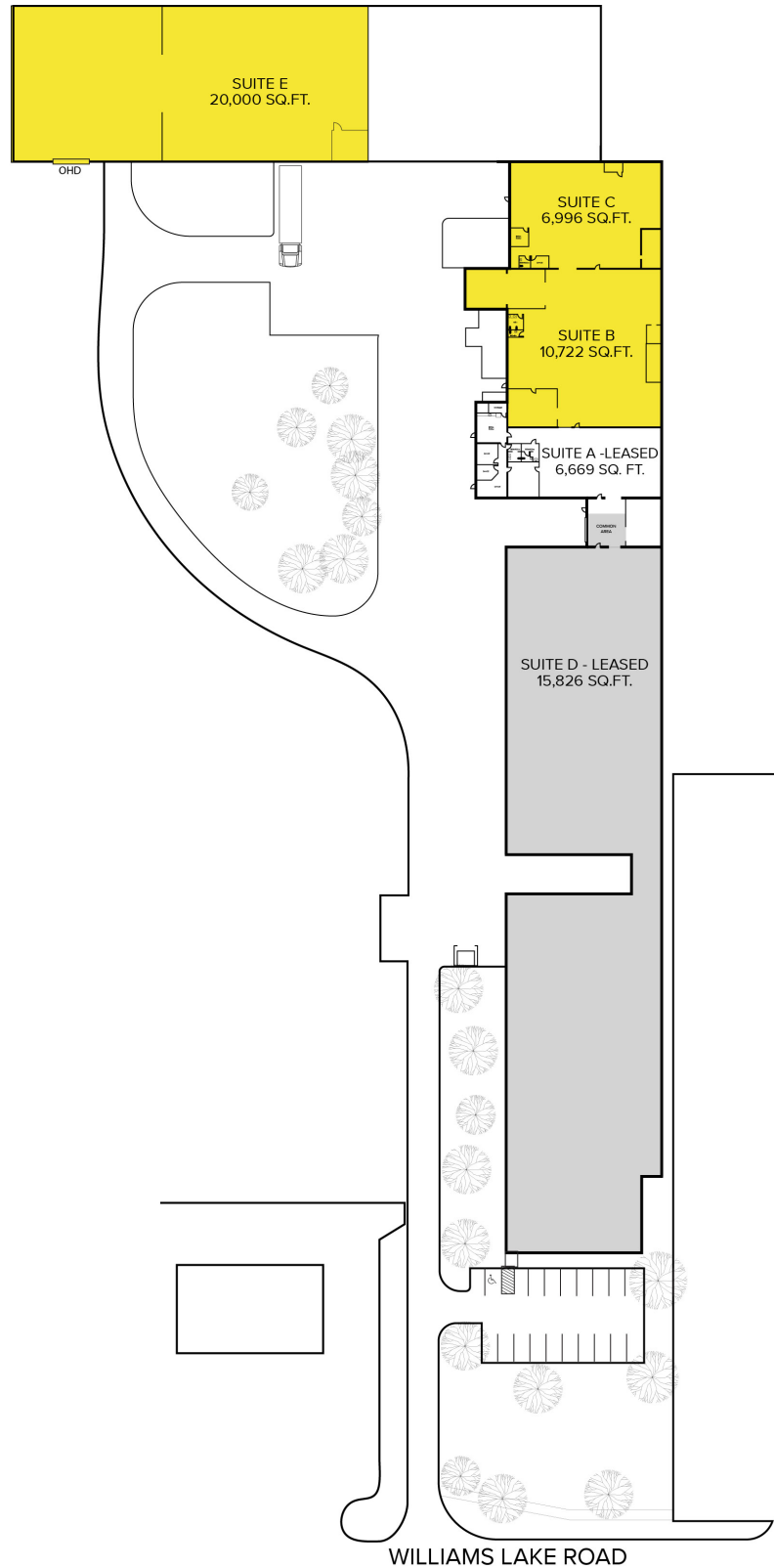
5720 - 5726 Williams Lake Road – Waterford, Michigan

Industrial For Lease

6,996 - 20,000
Square Feet
AVAILABLE

Site Plan

AVAILABILITY			
UNIT	TOTAL SF	OHD/DOCKS	RATE
B	10,722	1/0	\$6.25 NNN
C	6,996	1/0	\$6.25 NNN
E	20,000	1/1	\$6.25 NNN



For more information, please contact:

KRIS PAWLOWSKI
(248) 359 3801
kpawlowski@signatureassociates.com

GARY STEPHENS
(248) 948 0104
gstephens@signatureassociates.com

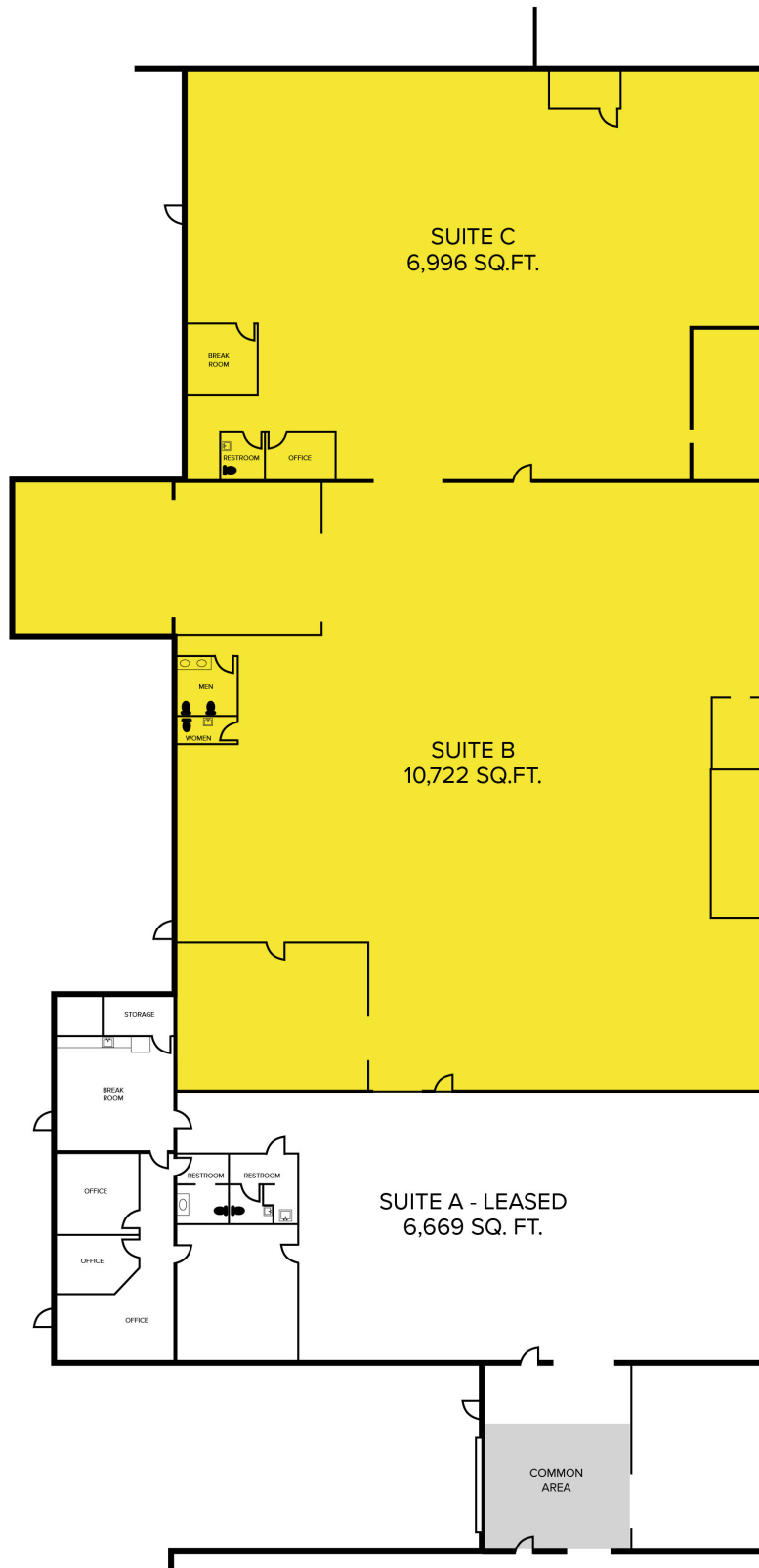
SIGNATURE ASSOCIATES
One Towne Square, Suite 1200
Southfield, MI 48076
www.signatureassociates.com

5720 - 5726 Williams Lake Road – Waterford, Michigan

Industrial For Lease

6,996 - 20,000
Square Feet
AVAILABLE

Floor Plan



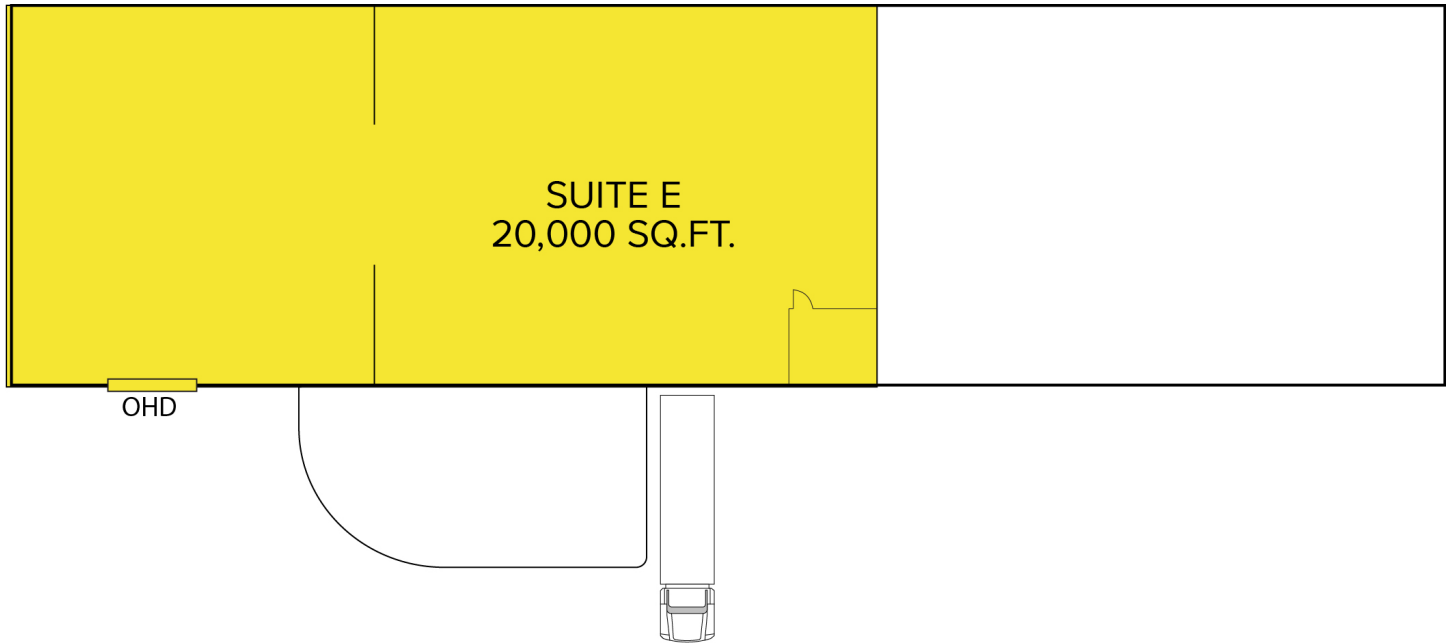
For more information, please contact:

KRIS PAWLOWSKI
(248) 359 3801
kpawlowski@signatureassociates.com

GARY STEPHENS
(248) 948 0104
gstephens@signatureassociates.com

SIGNATURE ASSOCIATES
One Towne Square, Suite 1200
Southfield, MI 48076
www.signatureassociates.com

Floor Plan



NORTH

For more information, please contact:

KRIS PAWLOWSKI
(248) 359 3801
kpawlowski@signatureassociates.com

GARY STEPHENS
(248) 948 0104
gstephens@signatureassociates.com

SIGNATURE ASSOCIATES
One Towne Square, Suite 1200
Southfield, MI 48076
www.signatureassociates.com