

# Downtown Retail / Office / Service Suite

315 E Liberty, Ann Arbor, MI 48104



**FOR LEASE**



## OFFERING SUMMARY

Lease Rate:	\$34.00 SF/yr Plus Utilities
Available SF:	1,400 SF
Zoning:	D1 (Core Downtown- Mixed Use)

## PROPERTY DESCRIPTION

Great opportunity in free-standing historic building with oak trim and wainscoting, hardwood floors and stained-glass windows on thoroughfare between Main and campus.

Suite is ideal for service providers, retail or office. On-site reserved parking available.

Lots of residences and Ann Arbor's downtown amenities available in both directions, including condos, apartments, dorms, service businesses, restaurants, coffee shops, retail, entertainment, etc.

**Joe Palms, CCIM**

734.662.3676

jpalms@swishercommercial.com

# Downtown Retail / Office / Service Suite

315 E Liberty, Ann Arbor, MI 48104



For Lease



**Joe Palms, CCIM**

734.662.3676

[jpalms@swishercommercial.com](mailto:jpalms@swishercommercial.com)

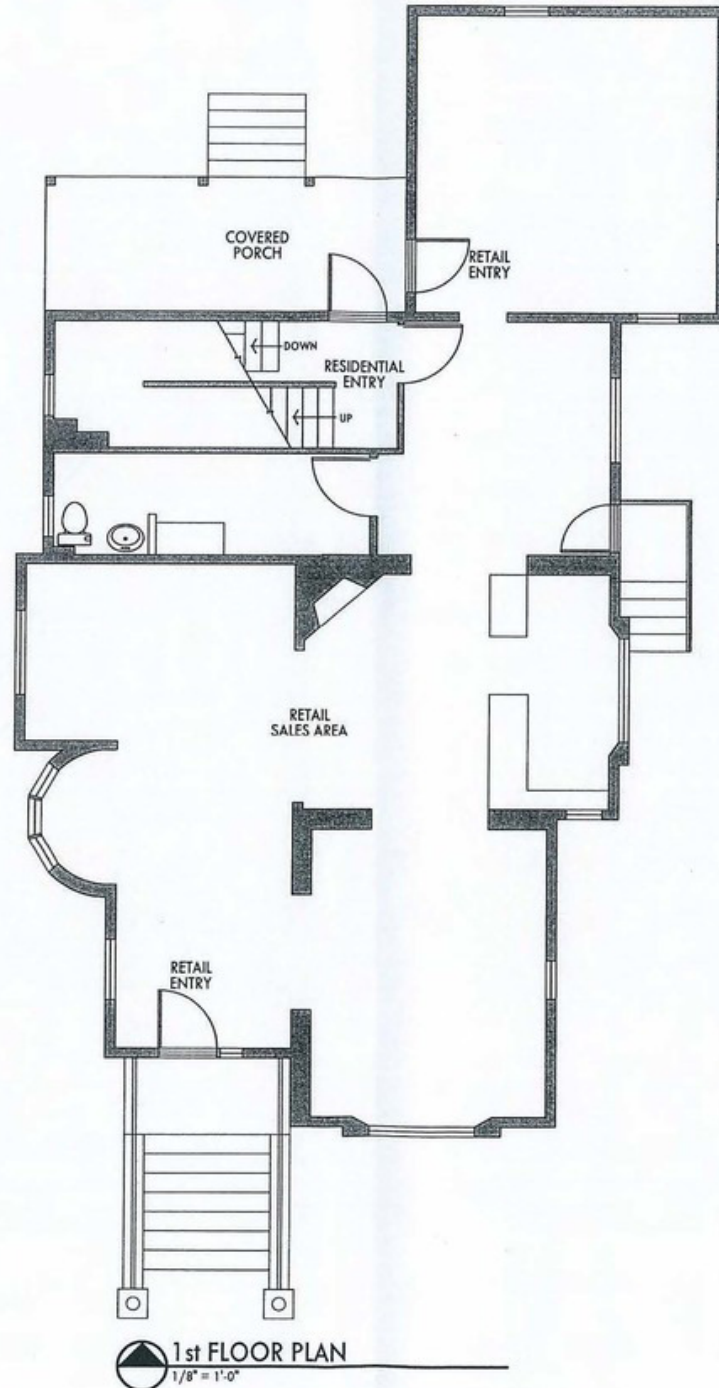


# Downtown Retail / Office / Service Suite

315 E Liberty, Ann Arbor, MI 48104



For Lease



**Joe Palms, CCIM**

734.662.3676

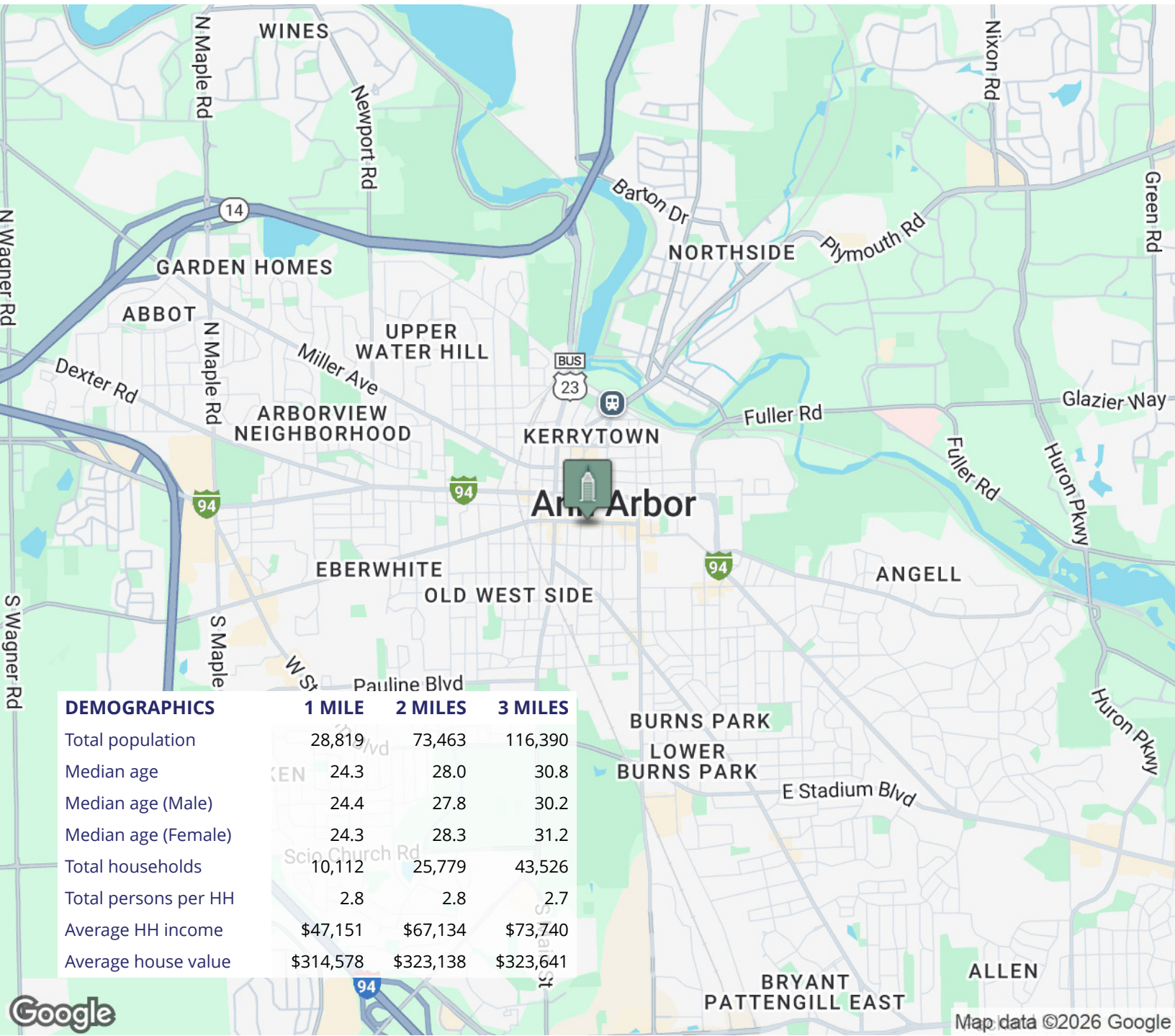
[jpalms@swishercommercial.com](mailto:jpalms@swishercommercial.com)

# Downtown Retail / Office / Service Suite

315 E Liberty, Ann Arbor, MI 48104



For Lease



**Joe Palms, CCIM**  
734.662.3676  
jpalms@swishercommercial.com