

481 BEAUFAIT STREET
DETROIT, MICHIGAN

INDUSTRIAL/RETAIL FOR LEASE
20,400 Square Feet Available



**SIGNATURE
ASSOCIATES**
KNOW SIGNATURE | KNOW RESULTS

EXCELLENT LOCATION



PROPERTY FEATURES

- 20,400 square feet available
- 400 square feet of office
- 12' - 16' clear height
- (2) 12x12 grade level doors, (1) truckwell
- Zoned SD4
- Ample parking spaces
- 220 volts power
- Large yard
- Lease Rate: \$6.00/sq.ft. NNN



For more information, please contact:

JOE STACK
(248) 359 0615
jstack@signatureassociates.com

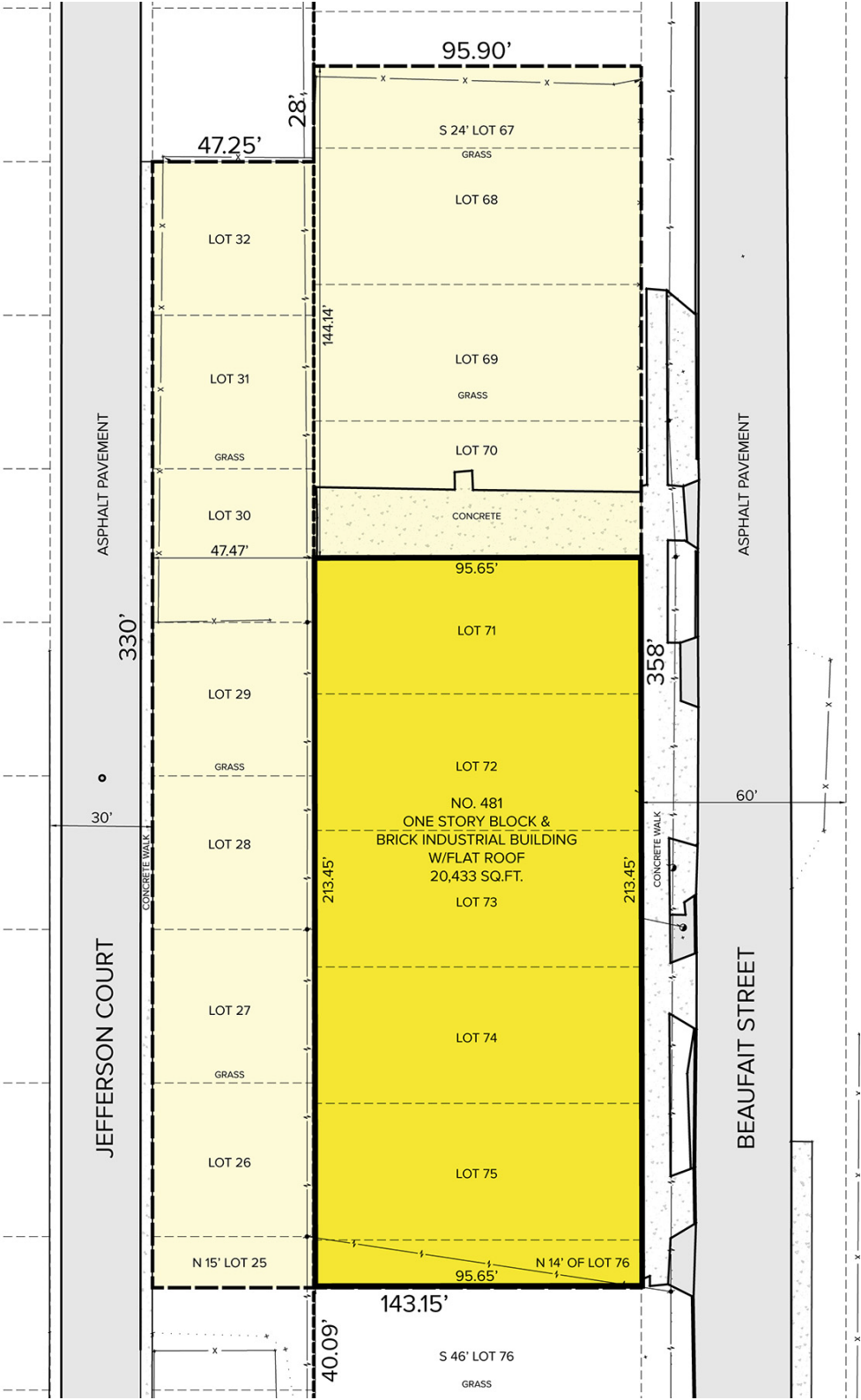
PETER VANDERKAAY
(248) 359 3837
pvanderkaay@signatureassociates.com

PAUL SAAD
(248) 359 0652
psaad@signatureassociates.com

481 Beaufait Street – Detroit, Michigan
Industrial/Retail For Lease

20,400
Square Feet
AVAILABLE

Site Plan



For more information, please contact:

JOE STACK
(248) 359 0615

PETER VANDERKAAY
(248) 359 3837

PAUL SAAD
(248) 359 0652

SIGNATURE ASSOCIATES
One Towne Square, Suite 1200
Southfield, MI 48076
www.signatureassociates.com

481 Beaufait Street – Detroit, Michigan

Industrial/Retail For Lease

20,400
Square Feet
AVAILABLE



DEMOGRAPHICS

| | POPULATION | MED. HH INCOME |
|--------|------------|----------------|
| 1 MILE | 14,812 | \$42,477 |
| 3 MILE | 65,045 | \$45,536 |
| 5 MILE | 180,568 | \$45,730 |

TRAFFIC COUNTS (TWO-WAY)

| | |
|--------|---------------------------------------|
| 36,581 | Jefferson Ave. NE. of Mt. Elliott St. |
| 26,031 | Jefferson Ave. SW. of Mt. Elliott St. |
| 6,004 | Mt. Elliott St. NW. of Jefferson Ave. |
| 1,395 | Mt. Elliott St. SE. of Jefferson Ave. |



For more information, please contact:

JOE STACK
(248) 359 0615

PETER VANDERKAAY
(248) 359 3837

PAUL SAAD
(248) 359 0652

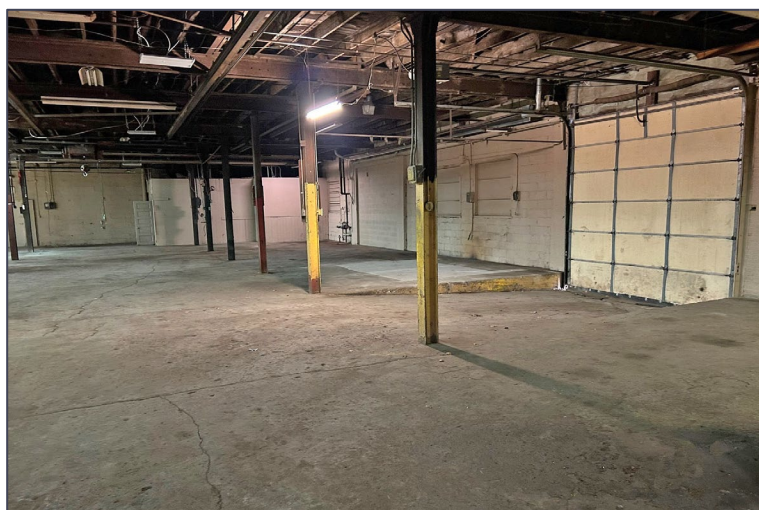
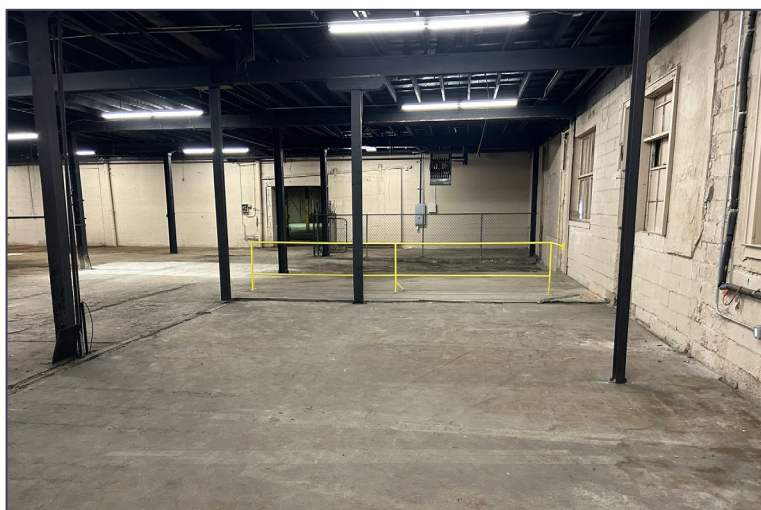
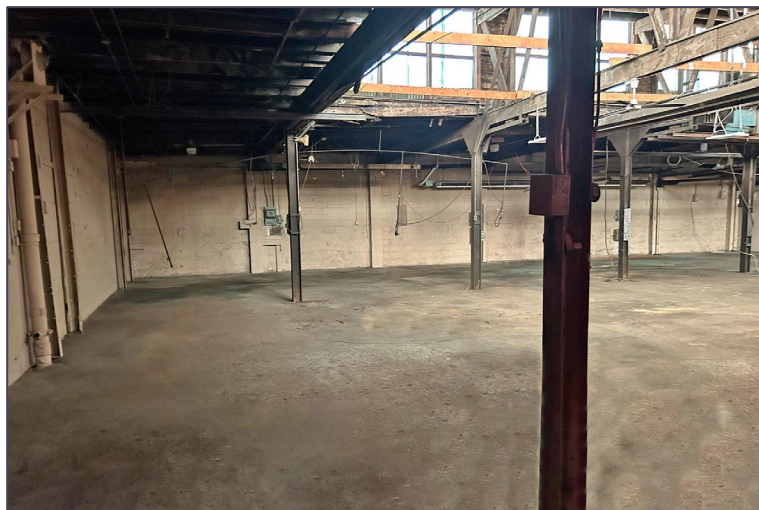
SIGNATURE ASSOCIATES
One Towne Square, Suite 1200
Southfield, MI 48076
www.signatureassociates.com

481 Beaufait Street – Detroit, Michigan

Industrial/Retail For Lease

20,400
Square Feet
AVAILABLE

Additional Photos



For more information, please contact:

JOE STACK
(248) 359 0615

PETER VANDERKAAY
(248) 359 3837

PAUL SAAD
(248) 359 0652

SIGNATURE ASSOCIATES
One Towne Square, Suite 1200
Southfield, MI 48076
www.signatureassociates.com

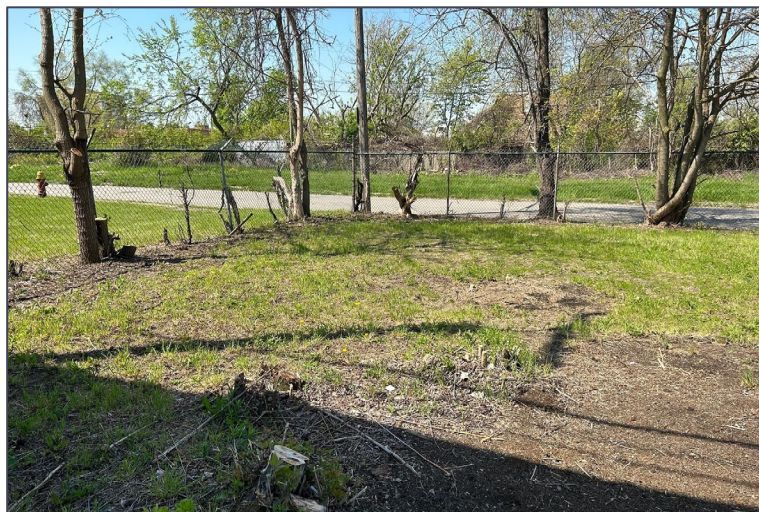
Information is subject to verification and no liability for errors or omissions is assumed. Price is subject to change and listing withdrawal.

481 Beaufait Street – Detroit, Michigan

Industrial/Retail For Lease

20,400
Square Feet
AVAILABLE

Additional Photos



For more information, please contact:

JOE STACK
(248) 359 0615

PETER VANDERKAAY
(248) 359 3837

PAUL SAAD
(248) 359 0652

SIGNATURE ASSOCIATES
One Towne Square, Suite 1200
Southfield, MI 48076
www.signatureassociates.com

Information is subject to verification and no liability for errors or omissions is assumed. Price is subject to change and listing withdrawal.