

Office | Retail | Service Condo Saline Commerce Center

147 Keveling Dr, Saline, MI 48176



For Sale

FOR SALE



OFFERING SUMMARY

Sale Price:	\$210,000
Suite Size:	1,000 SF
Zoning:	SPA-1
APN:	18-12-31-391-005

DEMOGRAPHICS	1 MILE	3 MILES	5 MILES
Total Households	2,178	7,908	15,461
Total Population	4,830	20,418	40,586
Average HH Income	\$116,181	\$156,793	\$149,773

PROPERTY DESCRIPTION

Recently remodeled & updated end unit office/retail condo located in the Saline Commerce Center just one-block off Michigan Avenue (US-12) near downtown Saline.

1,000 SF first floor has 2 private offices and large open work area with lots of windows.

Stairs lead to lower level basement with fire suppression sprinkler system that make's space ideal for storage and/or further improvements.

Unit is zoned SPA-1 which allows for commercial or office use.

Tony Caprarese

734.222.7520

tonyc@swishercommercial.com

Office | Retail | Service Condo Saline Commerce Center

147 Keveling Dr, Saline, MI 48176



For Sale



Tony Caprarese

734.222.7520

tonyc@swishercommercial.com

Office | Retail | Service Condo Saline Commerce Center

147 Keveling Dr, Saline, MI 48176



For Sale



Tony Caprarese

734.222.7520

tonyc@swishercommercial.com

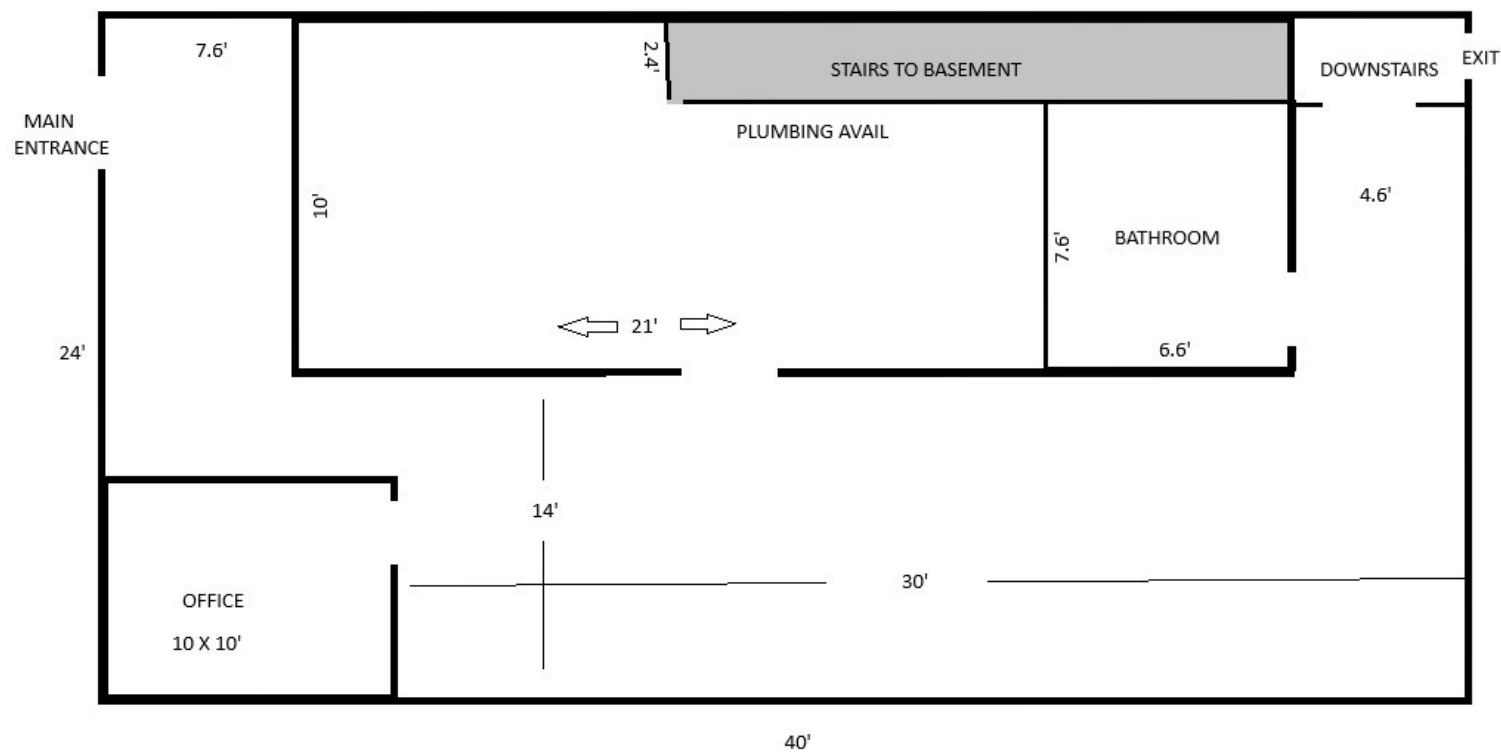
Office | Retail | Service Condo Saline Commerce Center

147 Keveling Dr, Saline, MI 48176



For Sale

147 Keveling Dr., Saline, MI. 48176
FLOOR PLAN SKETCH (not to scale)



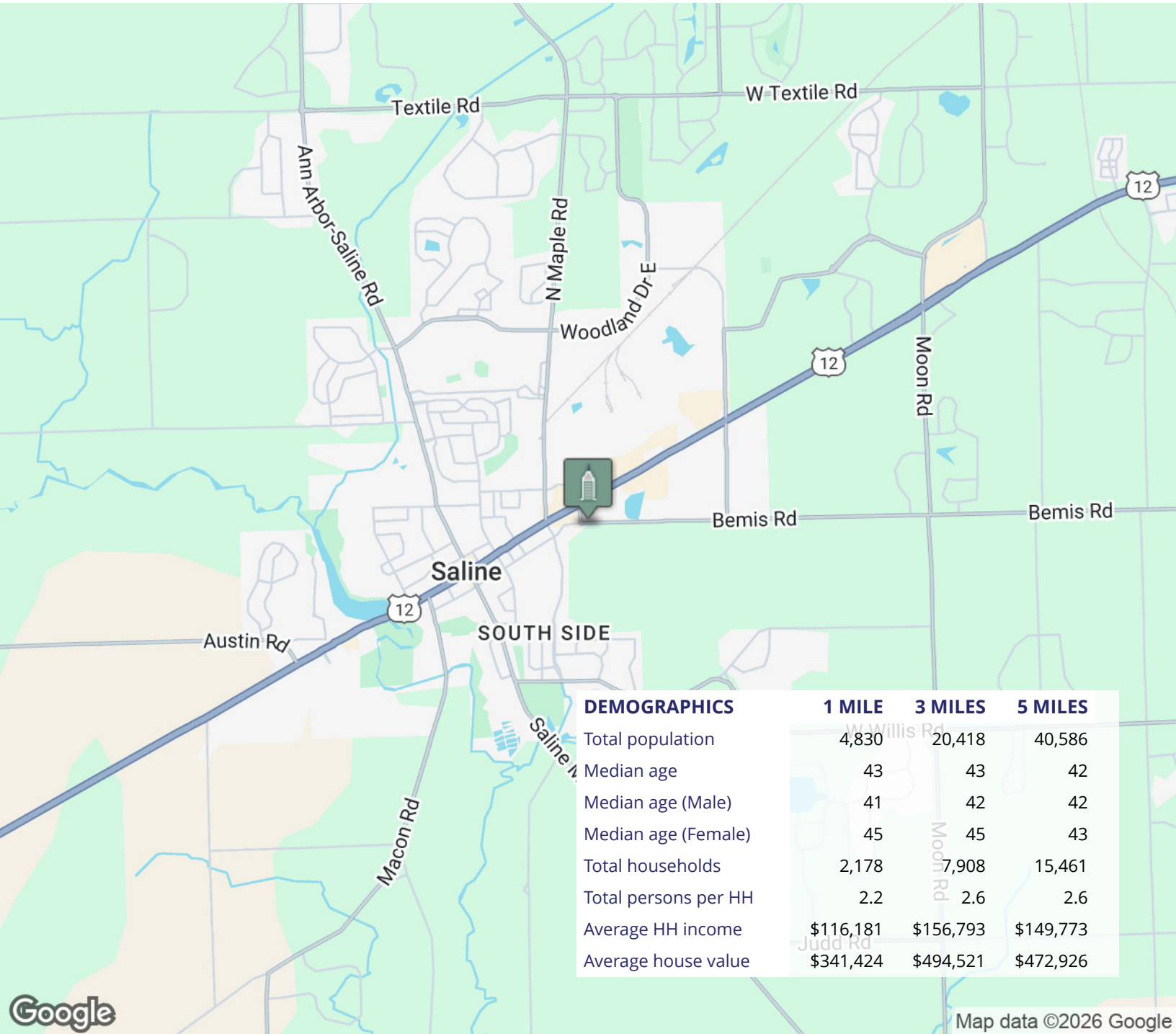
Tony Caprarese
734.222.7520
tonyc@swishercommercial.com

Office | Retail | Service Condo Saline Commerce Center

147 Keveling Dr, Saline, MI 48176



For Sale



Tony Caprarese
734.222.7520
tonyc@swishercommercial.com