

3200 GREENFIELD ROAD
DEARBORN, MICHIGAN

OFFICE FOR LEASE

3,074 – 16,044 Square Feet Available



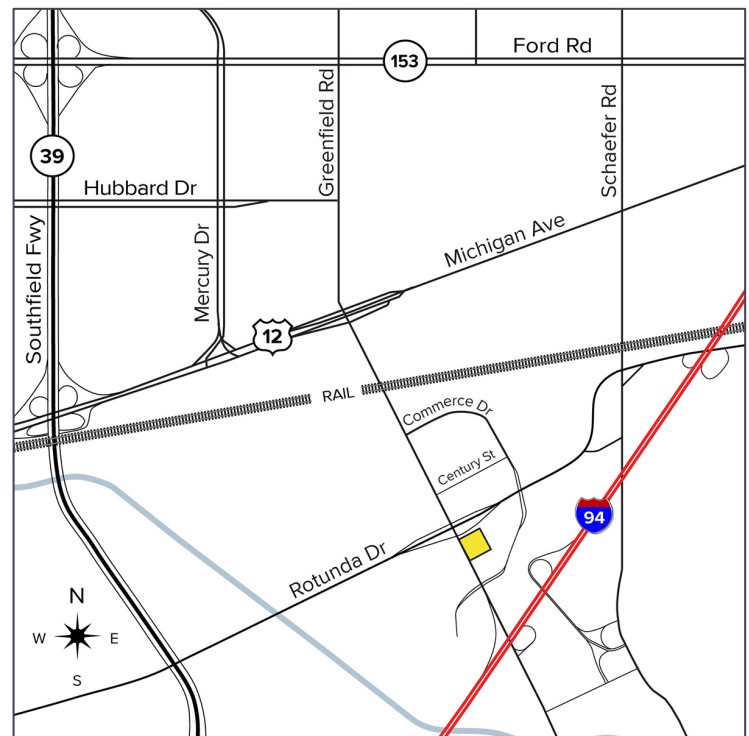
**SIGNATURE
ASSOCIATES**
KNOW SIGNATURE | KNOW RESULTS

EXTENSIVE LOBBY RENOVATIONS



PROPERTY FEATURES

- Spaces from 3,074 to 16,044 square feet available
- Highest quality office space
- Beautifully landscaped
- Covered drop-off
- Extensive lobby & restroom renovations
- 24-hour convenience store
- Stable institutional ownership and professional management
- Generous parking ratio – over 600 spaces available
- Close to I-94, M-39, major Dearborn commercial corridor Detroit Metro Airport and plenty of retail
- Suite improvement allowances
- Lease Rate: \$17.95/sq.ft. gross + electric



For more information, please contact:

CHRIS SECONTINE

(248) 799 3174

csecontine@signatureassociates.com

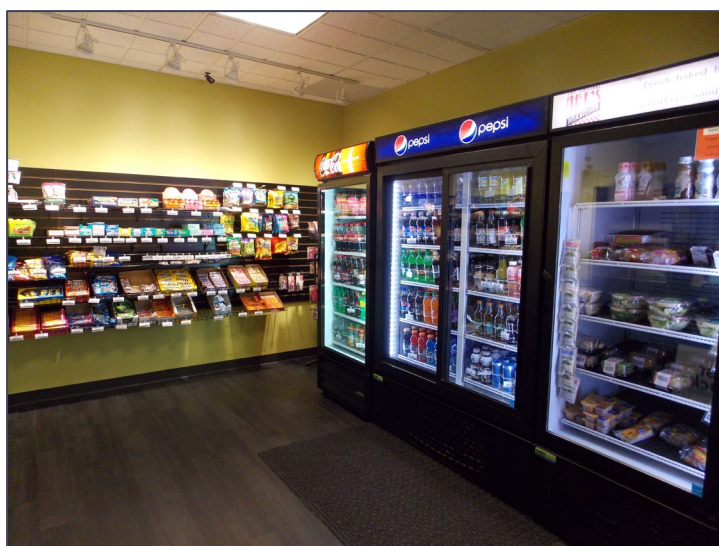
SIGNATURE ASSOCIATES
One Towne Square, Suite 1200
Southfield, MI 48076
www.signatureassociates.com

Information is subject to verification and no liability for errors or omissions is assumed. Price is subject to change and listing withdrawal.

3200 Greenfield Road - Dearborn, Michigan

Office For Lease

3,074 – 16,044
Square Feet
AVAILABLE



For more information, please contact:

CHRIS SECONTINE
(248) 799 3174
csecontine@signatureassociates.com

SIGNATURE ASSOCIATES
One Towne Square, Suite 1200
Southfield, MI 48076
www.signatureassociates.com

Information is subject to verification and no liability for errors or omissions is assumed. Price is subject to change and listing withdrawal.

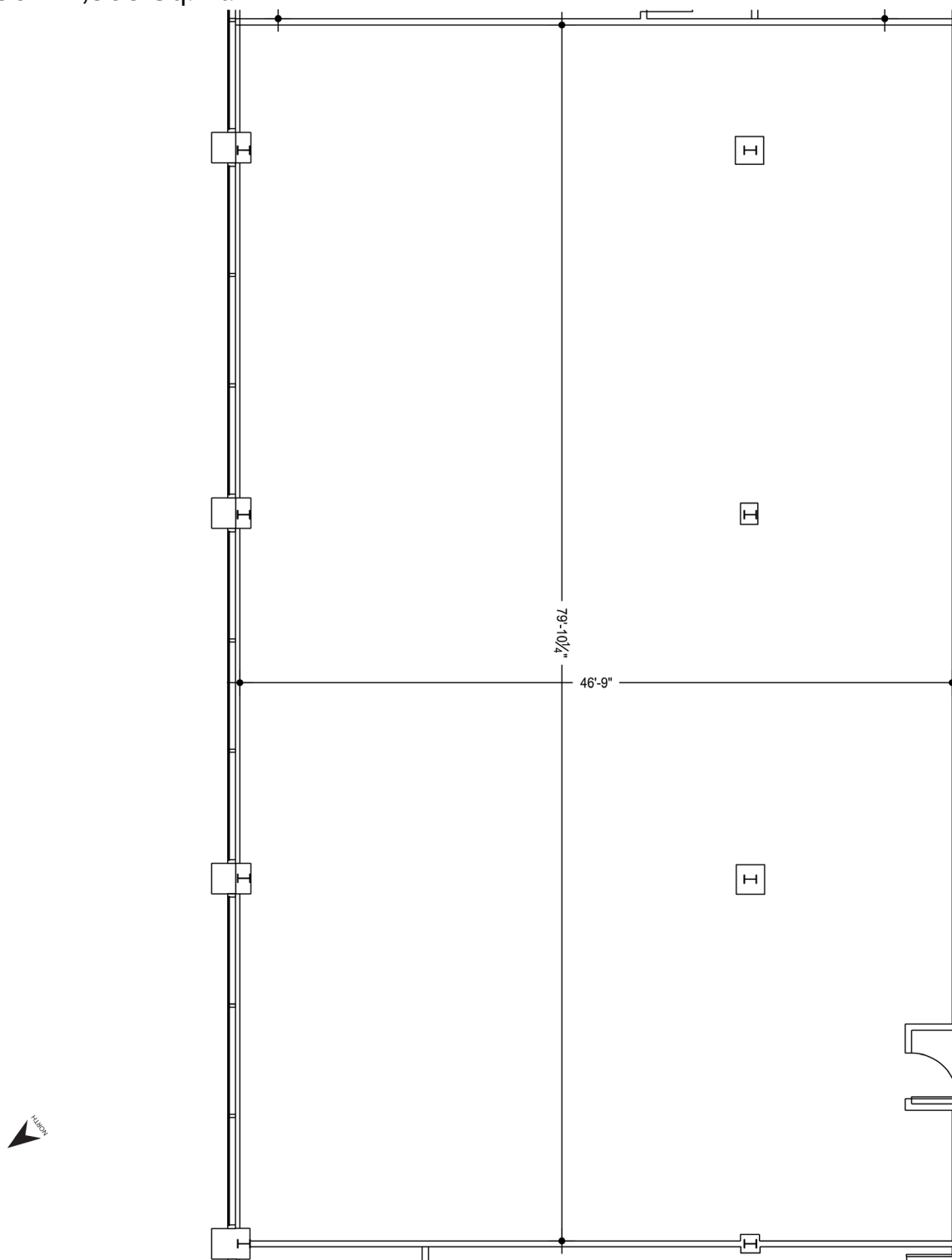
3200 Greenfield Road - Dearborn, Michigan

Office For Lease

3,074 – 16,044
Square Feet
AVAILABLE

Floor Plan

Suite 150 – 4,365 Sq. Ft.



For more information, please contact:

CHRIS SECONTINE

(248) 799 3174

csecontine@signatureassociates.com

SIGNATURE ASSOCIATES
One Towne Square, Suite 1200
Southfield, MI 48076
www.signatureassociates.com

Information is subject to verification and no liability for errors or omissions is assumed. Price is subject to change and listing withdrawal.

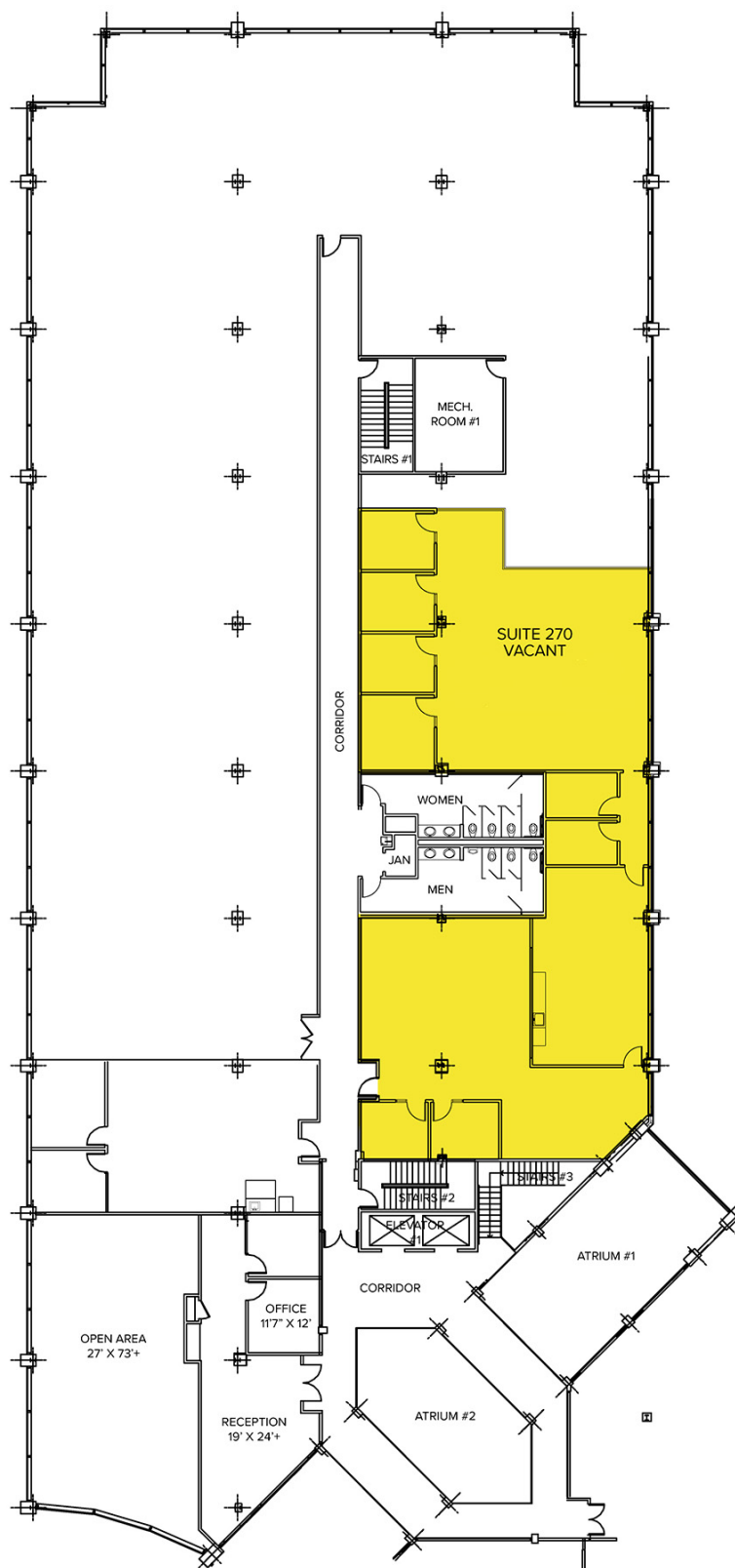
3200 Greenfield Road - Dearborn, Michigan

Office For Lease

3,074 – 16,044
Square Feet
AVAILABLE

Floor Plan

Second Floor (270) – 4,594 Sq. Ft.



For more information, please contact:

CHRIS SECONTINE

(248) 799 3174

csecontine@signatureassociates.com

SIGNATURE ASSOCIATES
One Towne Square, Suite 1200
Southfield, MI 48076
www.signatureassociates.com

Information is subject to verification and no liability for errors or omissions is assumed. Price is subject to change and listing withdrawal.

3200 Greenfield Road - Dearborn, Michigan

Office For Lease

3,074 – 16,044
Square Feet
AVAILABLE

Floor Plan Third Floor



For more information, please contact:

CHRIS SECONTINE
(248) 799 3174
csecontine@signatureassociates.com

SIGNATURE ASSOCIATES
One Towne Square, Suite 1200
Southfield, MI 48076
www.signatureassociates.com