

E

D

C

B

A

DEMOLITION GENERAL NOTES

- A. CONTRACTOR TO VERIFY ALL DIMENSIONS AND EXISTING CONDITIONS PRIOR TO COMMENCEMENT OF WORK AND SHALL NOTIFY ARCHITECT OF ANY DISCREPANCIES.
- B. CONTRACTOR SHALL NOT DEMOLISH ANY LOAD BEARING WALLS OR CONSTRUCTION THAT WILL COMPROMISE THE STRUCTURAL INTEGRITY OF THE STRUCTURE. NOTIFY ARCHITECT OF ANY STRUCTURAL ISSUES ARISING FROM DEMOLITION.
- C. WHERE DEMOLITION OCCURS ADJACENT TO EXISTING TO REMAIN, PATCH AND REPAIR ADJACENT CONDITIONS FOR A UNIFORM APPEARANCE.
- D. COORDINATE ALL DEMO AREAS WITH NEW FLOOR PLAN.
- E. COORDINATE ALL DEMO AREAS WITH NEW REFLECTED CEILING PLAN.
- F. REMOVE FLOORING AND BASE AT DEMO AREAS.

DEMOLITION KEY NOTES

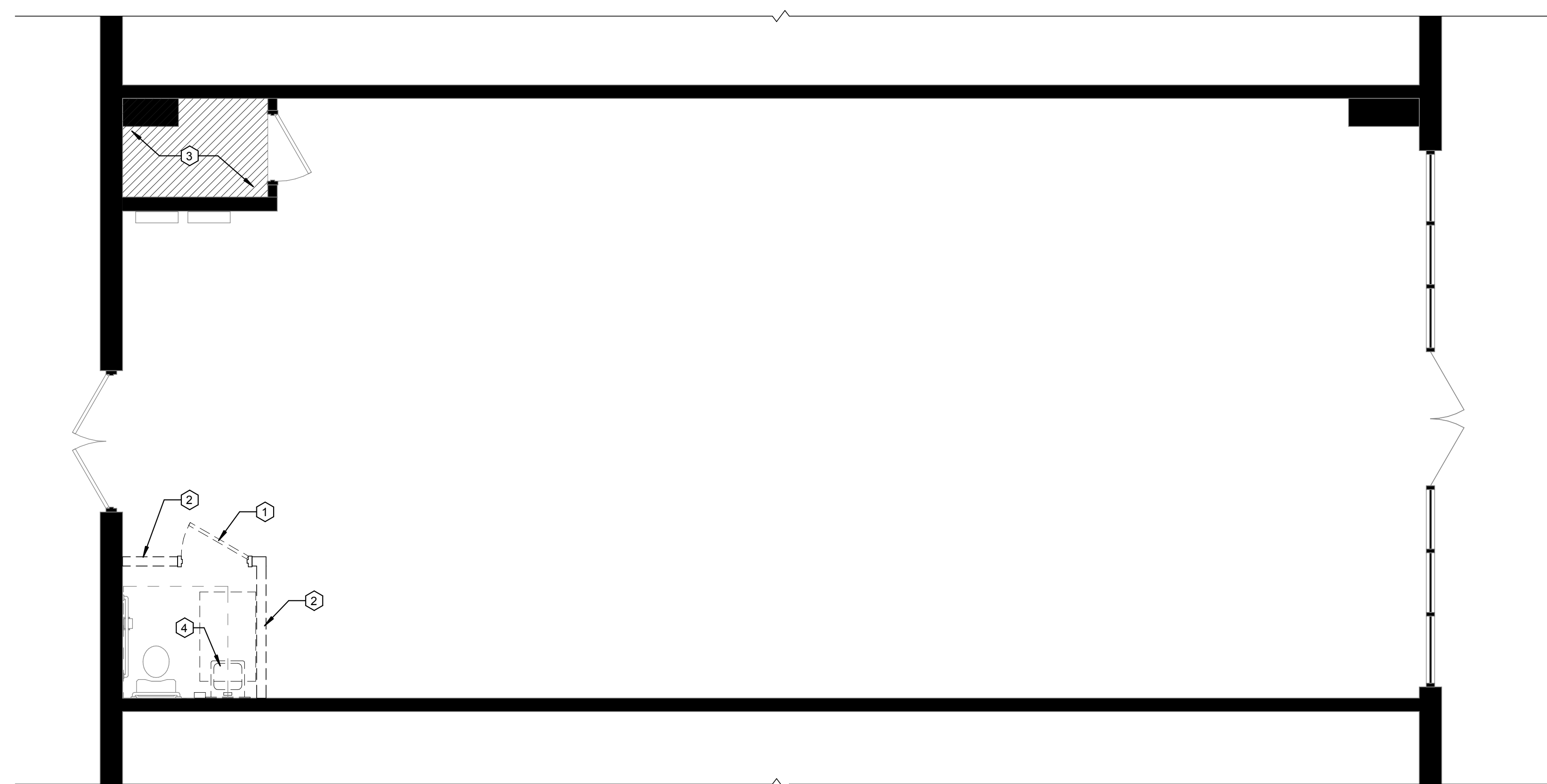
- ① REMOVE EXISTING DOOR AND FRAME
- ② REMOVE EXISTING PARTITIONS AND WALL BASE SHOWN DASHED
- ③ NO DEMOLITION WORK IN HATCHED ROOMS AND ASSOCIATED DOORS
- ④ RELOCATE EXISTING SINK AND SOAP DISPENSER



Architects, Engineers
 2727 Paces Ferry Road | Bldg 1
 Suite 1800
 Atlanta | Georgia | 30339
 770-933-9242 | 770-933-9246 f
 Offices in Melbourne, Orlando, West Palm Beach, Atlanta, Charleston, Everett, Mexico

These plans are protected by Federal Copyright protection. Unauthorized use may result in an infringement action.

ISSUE	FOR DESIGN INTENT SET
REVISION	△



1 DEMOLITION PLAN
 A100 1/4" = 1'-0"

AT&T MOBILITY
 MT. VERNON, IN ENTD
 510 E. 4th Street, Mt Vernon, IN 47620
 EAST REGION

FOR DESIGN INTENT SET ONLY
 NOT FOR CONSTRUCTION

ARCH/ENGR OF RECORD
 DESIGNED BY
 BDR
 DRAWN BY
 KAS
 CHECKED BY
 SJD
 PROJECT NUMBER
 C06898.893.00
 DATE
 11/09/18
 TITLE
 DEMOLITION PLAN

DRAWING NO.
A100

NOT FOR PERMIT OR CONSTRUCTION

1 | 2 | 3 | 4 | 5 | 6

U:\Revit Project Files\2017\68989800_Mount Vernon_IN_2017_Central_kennall.rvt
 11/9/2018 9:24:56 AM

E

D

C

B

A

FURNITURE & FIXTURE PLAN KEY NOTES

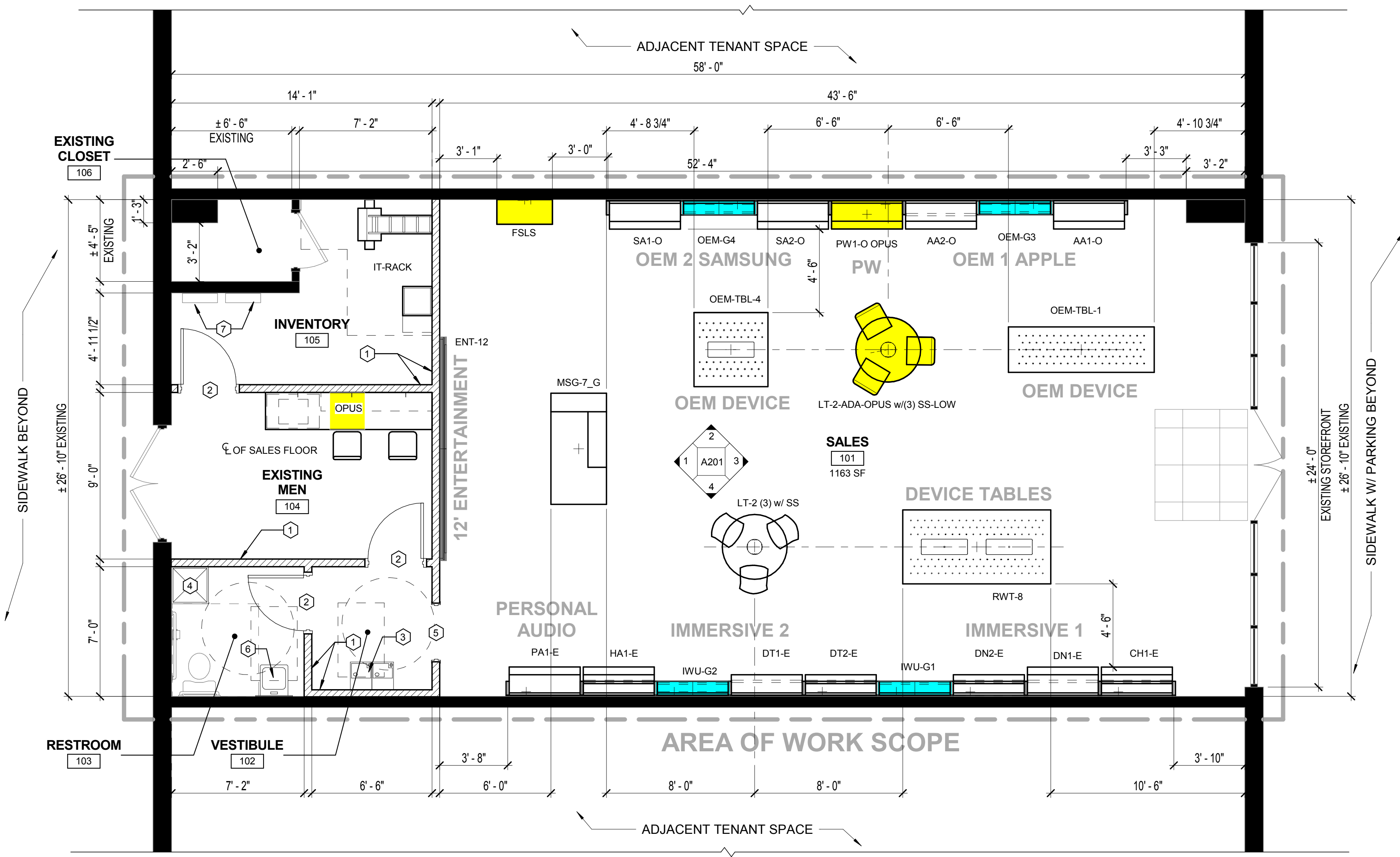
- ① NEW GWB PARTITION
- ② NEW 3'-0" X 7'-0" WOOD DOOR
- ③ NEW ADA COMPLIANT DRINKING FOUNTAIN
- ④ NEW SERVICE SINK
- ⑤ NEW 3'-0" X 7'-0" CASED OPENING
- ⑥ RELOCATED EXISTING LAVATORY
- ⑦ EXISTING ELECTRICAL PANEL

Architects, Engineers
2727 Paces Ferry Road | Bldg 1
Suite 1800
Atlanta | Georgia | 30339
770-933-9242 | 770-933-9246 f
Offices in Melbourne, Orlando, West Palm Beach, Atlanta, Charleston, Everett, Mexico

These plans are protected by Federal Copyright protection. Unauthorized use may result in an infringement action.

ISSUE FOR DESIGN INTENT SET

REVISION Δ



WALL FIXTURES (4' BAY) 18 TOTAL

IMMERSIVE 1	4
IMMERSIVE 2	4
OEM SHOP 1 (APPLE)	3
MA/PW	1
OEM SHOP 2 (SAMSUNG)	3
PERSONAL AUDIO	1

ENTERTAINMENT WALL 12 FT

FLOOR FIXTURES

LARGE DEVICE TABLE	1
OEM 1 TABLE	1
OEM 4 TABLE	1
LEARNING TABLES	2
FSLs (FREESTANDING)	1
COLUMN WRAP	0
FULL OPUS TERMINAL (SALES FLOOR)	1
ENTERTAINMENT SEATING	1
SEATING CLUSTER W/ FSLs	0
SEATING CLUSTER	0

1 FURNITURE & FIXTURE PLAN
1/4" = 1'-0"

AT&T MOBILITY
MT. VERNON, IN ENTD
510 E. 4th Street, Mt Vernon, IN 47620
EAST REGION

FOR DESIGN INTENT SET ONLY
NOT FOR CONSTRUCTION

ARCH/ENGR OF RECORD

DESIGNED BY
BDR
DRAWN BY
KAS
CHECKED BY
SJD
PROJECT NUMBER
C06898.893.00

DATE
11/09/18

TITLE
FURNITURE AND
FIXTURE PLAN

DRAWING NO.
A102

NOT FOR PERMIT OR CONSTRUCTION

1 | 2 | 3 | 4 | 5 | 6

Architects, Engineers

2727 Paces Ferry Road | Bldg 1
Suite 1800
Atlanta | Georgia | 30339
770-933-9242 | 770-933-9246 f

Offices in Melbourne, Orlando, West Palm Beach, Atlanta, Charleston, Everett, Mexico

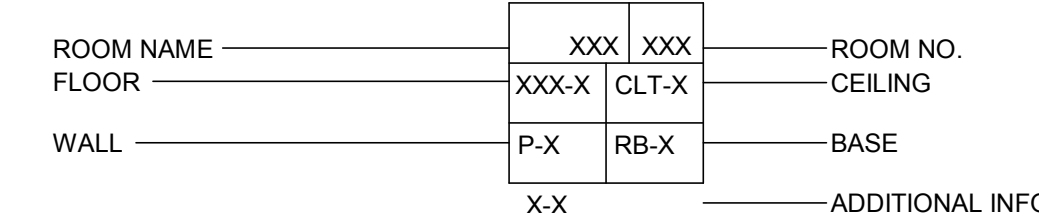
These plans are protected by Federal Copyright protection. Unauthorized use may result in an infringing action.

ISSUE FOR DESIGN INTENT SET

REVISION

FINISH PLAN KEY

1. INDICATES TYPICAL FINISHES WITHIN ROOM, UNO.

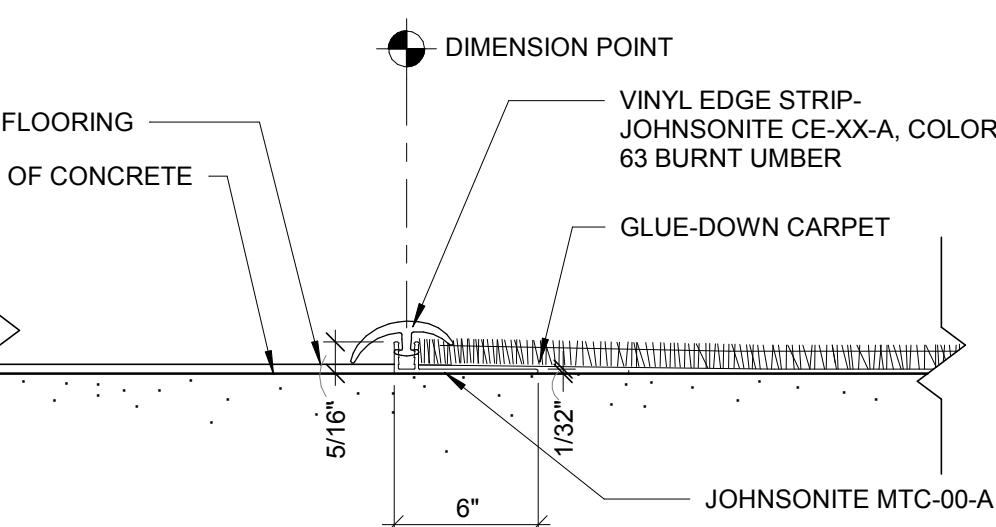


FINISH PLAN KEY NOTES

- 1 PROVIDE TRANSITION STRIP AT THIS LOCATION, DETAIL 2/A103

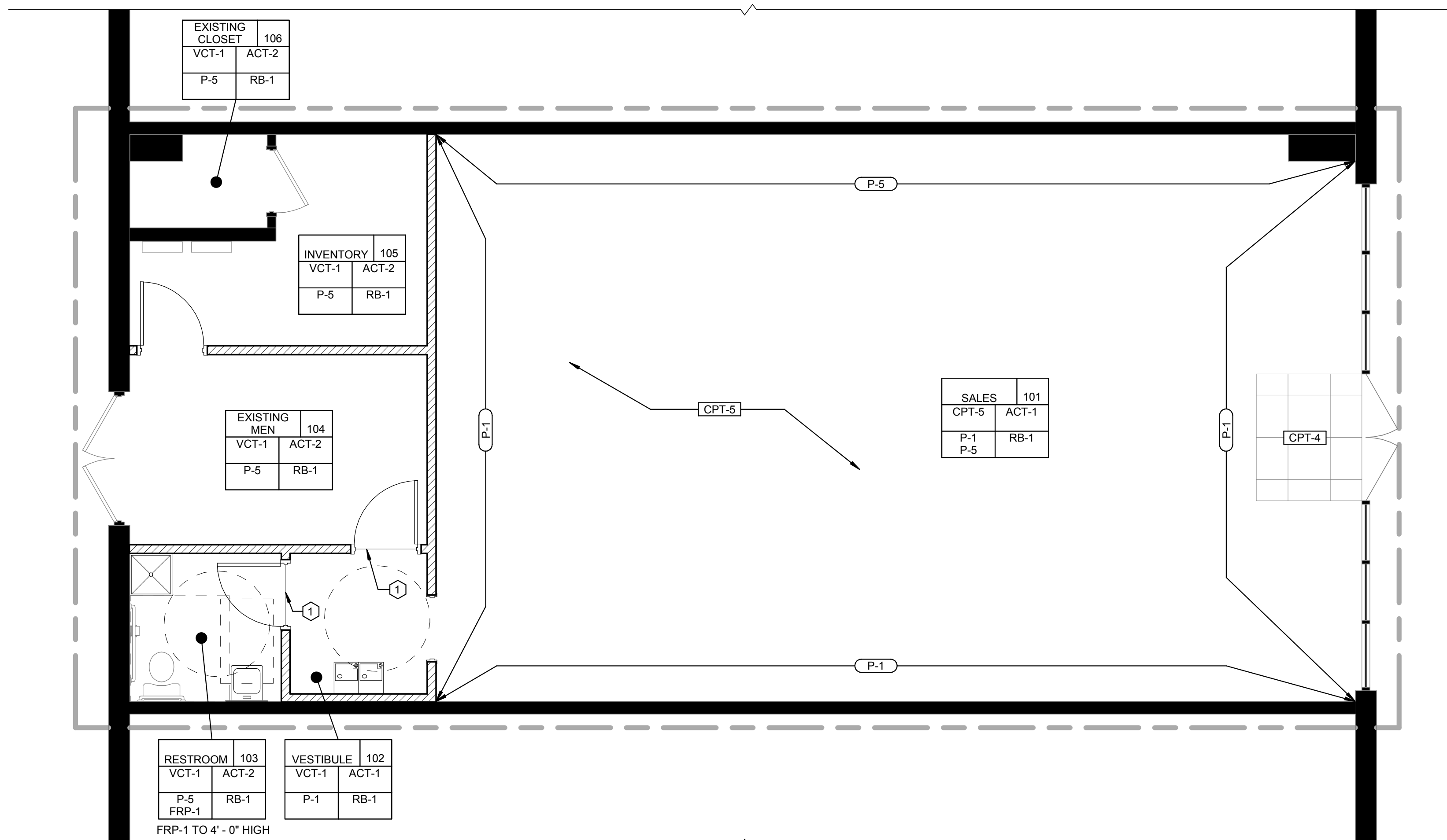
FINISH PLAN GENERAL NOTES

- A. FOR ALL WALLS WHERE NO FINISH OR BASE IS INDICATED, SEE INTERIOR ELEVATIONS SHEET, A201.
- B. SALES FLOOR WALLS TO BE PAINTED PER FINISH PLAN.
- C. BACK OF HOUSE WALLS TO BE PAINTED P-5, U.N.O.
- D. ALL VCT SHALL BE WAXED PRIOR TO TURN OVER.
- E. ALL BACK OF HOUSE DOORS AND FRAMES (ALUMINUM STOREFRONT NOT INCLUDED) TO MATCH ADJACENT WALLS.
- F. PAINT ALL SALES FLOOR DOORS AND FRAMES TO BE PAINTED TO MATCH ADJACENT WALLS. EXCEPT SEMI-GLOSS.
- G. RUBBER BASE WILL NOT BE INSTALLED UNTIL ALL WALLS HAVE RECEIVED THE FINAL COAT OF PAINT.
- H. WHERE DEMOLITION OCCURS ADJACENT TO EXISTING, PATCH AND REPAIR ADJACENT CONDITIONS FOR A UNIFORM APPEARANCE.
- I. ALL SURFACES TO BE BRUSHED AND ROLLED EXCEPT HVAC GRILLS WHICH ARE TO BE SPRAYED.
- J. ALL SURFACES TO RECEIVE THREE COATS - 1 PRIMER AND TWO FINISH.
- K. CREATE CRISP / CLEAN LINE BETWEEN ALL COLOR CHANGES.
- L. PAINT CONTRACTOR TO PROVIDE PAINT RELATED CAULKING AND SANDING.
- M. PAINT CONTRACTOR TO PROVIDE "TOUCH-UP" AFTER FIXTURE INSTALLATION.
- N. ALL FLOORING TRANSITIONS ARE TO BE FURNISHED AND INSTALLED BY FLOORING CONTRACTOR.
- O. NOT ALL ITEMS ON FINISH LEGEND USED.
- P. PAINT FINISH TYPES SEE FINISH LEGEND DESCRIPTIONS.
- Q. GC TO PROVIDE LEVEL 5 GRADE FINISH ON ALL DRYWALL PARTITIONS IN RETAIL SPACE.
- R. INSTALL FRP-1 WAINSCOT TO 4' - 0" AFF ON ALL WALLS OF RESTROOM, 100% GLUED BACK.



FLOORING TRANSITION

1 1/2" = 1'-0"



1 FINISH PLAN

A103 1/4" = 1'-0"

FINISH LEGEND				
ACT-1	USG ASTRO EDGE: SLT SIZE: 2 X 2 COLOR: FLAT WHITE GRID: DONN DX 15/16" TRIM: 2" COMPASSO ELITE AAS TRANSITION GRID COLOR: FLAT WHITE CONTACT: CAROLYN FORBES 206-518-3006 CFORBES@USG.COM NOTE: LOWER CLG SALES FLR, USE LOGIX UTILITY MODULE BRACKET TO FRAME ONE SIDE LIGHT FIXTURE OPENINGS	ACT-2	USG RADAR CLIMAPLUS #2410 EDGE: SQ SQUARE SIZE: 2 X 4 COLOR: FLAT WHITE GRID: DONN DX 15/16" GRID COLOR: FLAT WHITE CONTACT: CAROLYN FORBES 206-518-3006 CFORBES@USG.COM NOTE: BACK OF HOUSE CEILING	
CG-1	RETAIL SPECIALTY, INC 18GA STAINLESS STEEL COLOR: 430 GRADE #4 SATIN SIZE: 1" X 1" X 4'-0" SALES FLOOR EXPOSED CORNERS	CONTACT: DAN HICKEY WWW.RSIHQ.COM	CW-6 MFR: WILSON ART NORTH SEA D90-60-MATTE FINISH CC-6 IS FOR 6" X 6" COLUMN WRAP CC-8 IS FOR 8" X 8" COLUMN WRAP	
CPT-4	MFR: SHAW CARPET STYLE: AT&T 800Y7 / STEP FORWARD COLOR: STERLING #31557 SIZE: 2'-0" X 2'-0" - 1/4" TURN INSTALL CONTACT: MARK LAW 770-241-1345 WALK OFF MAT, ENTRY		CPT-5	MFR: SHAW CARPET STYLE: AT&T 5T172 / PLACES COLOR: ADVENTURE #72481 SIZE: 0'-0" X 3'-0" ASHLAR CONTACT: MARK LAW 770-241-1345 SALES FLOOR
P-1	BENJAMIN MOORE "DEEP SPACE" #2125-20 EGGSHELL ON GYP WALLS 877-623-8484 ATT# 113572		P-5	BENJAMIN MOORE "HORIZON" #OC-53 EGGSHELL ON GYP WALLS 877-623-8484 ATT# 113572
P-2	BENJAMIN MOORE "DEEP SPACE" #2125-20 SEMI-GLOSS ON DOOR TO BOH 877-623-8484 ATT# 113572		P-9	BENJAMIN MOORE "STEEL WOOL" #2121-20 SEMI-GLOSS ON BOH DOORS & FRAMES 877-623-8484 ATT# 113572
RB-1	SHAW COVE BASE COLOR: SLATE 00580 SIZE: 4" HEIGHT CONTACT: MARK LAW 770-241-1345			
FRP-1	PARKLAND PERFORMANCE #FRP0130P COLOR: BRIGHT WHITE, SMOOTH SIZE: .090" X 4'-0" X 8'-0" 800-835-4110 BACK OF HOUSE AREA AS INDICATED ON A103, INCLUDE COLOR MATCHED TRIMS AND CORNER GUARDS			
VCT-1	ARMSTRONG IMPERIAL TEXTURE #51904 STERLING 12"x12"x 1/8" BOH FLOORING			

FLAME SPREAD AND SMOKE DEVELOPMENT REQUIREMENTS FOR ALL INTERIOR FINISHES
CORRIDORS CLASS C (76-200), SMOKE 0-450
ROOMS AND ENCLOSED SPACES CLASS C (76-200), SMOKE 0-450
EXIT ENCLOSURES AND PASSAGEWAYS CLASS B (26-75), SMOKE 0-450
ALL INTERIOR FINISHES MEET FLAME SPREAD AND SMOKE DEVELOPMENT CRITERIA

AT&T MOBILITY
MT. VERNON, IN ENTD
510 E. 4th Street, Mt Vernon, IN 47620
EAST REGION

FOR DESIGN INTENT SET ONLY
NOT FOR CONSTRUCTION

ARCH/ENGR OF RECORD

DESIGNED BY
BDR
DRAWN BY
KAS
CHECKED BY
SJD
PROJECT NUMBER
C06898.893.00

DATE
11/09/18
TITLE
FINISH PLAN

DRAWING NO.
A103

NOT FOR PERMIT OR CONSTRUCTION

These plans are protected by Federal Copyright protection. Unauthorized use may result in an infringement action.

ISSUE FOR DESIGN INTENT SET

REVISION

RCP GENERAL NOTES

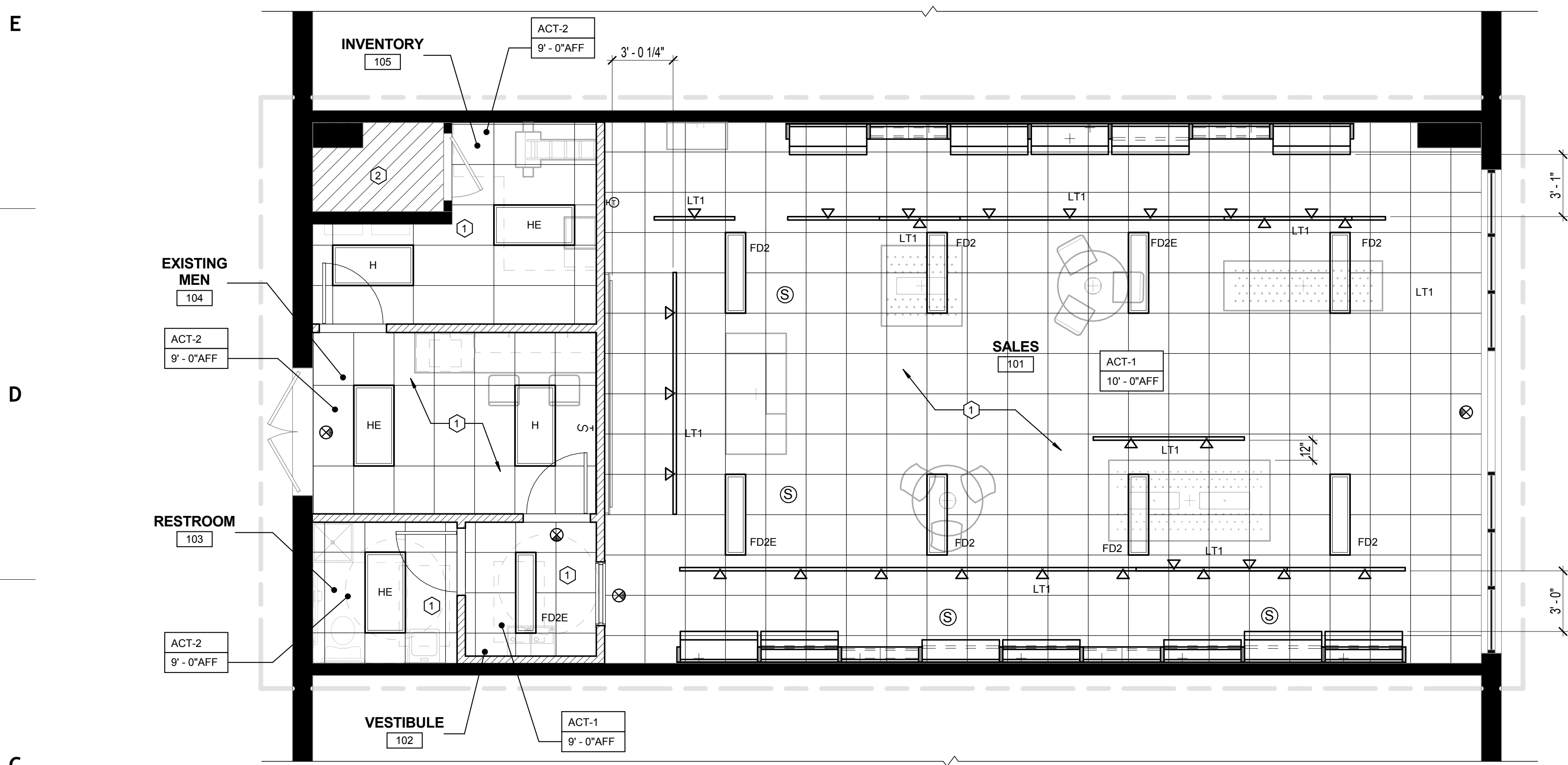
- A. LIGHT SWITCHES TO BE MOUNTED AT 48" AFF, UNO.
- B. SEE SHEET A103 FOR FINISH SCHEDULE AND ACOUSTICAL CEILING TILE (ACT) INFORMATION.
- C. TRACK LIGHT HEAD TO BE CENTERED ON FIXTURE BELOW, GC TO AIM LIGHT.
- D. GC TO PROVIDE PLYWOOD BACKER FOR EACH ENTERTAINMENT WALL SPEAKER. PROVIDE ONE OF THE 2 SIZES: 24" X 24" X 1/2" OR 6" X 24" X 1/2".
- E. SPEAKER CABLES SHALL BE INSTALLED WITH 10 FEET OF ADDITIONAL LENGTH AT SPEAKER ENDS FOR ADJUSTMENT DURING TERMINATION. SPEAKER CABLES MUST BE PULLED DIRECTLY ABOVE THE IT RACK AND EXTEND TO FINISHED FLOOR.

RCP KEY NOTES

- ① NEW CEILING GRID AND TILE IN THIS SPACE
- ② NO WORK IN THIS SPACE

REFLECTED CEILING PLAN LEGEND

- 2' X 2' SUPPLY DIFFUSER
- 2' X 2' RETURN
- 1' X 4' LED LIGHT **FD2**
- 1' X 4' LED LIGHT EMERGENCY **FD2E**
- 2' X 4' LIGHT **H**
- 2' X 4' LIGHT EMERGENCY **HE**
- LED TRACK LIGHT **LT1**
- SPEAKER
- RECESSED LED LIGHT **LA3**
- EXIT LIGHT
- LIGHT SWITCH
- ACOUSTICAL INSULATION
- SPRINKLER HEAD
- EXISTING TO REMAIN
- RELOCATED EXISTING FIXTURE



1 REFLECTED CEILING PLAN
A104 1/4" = 1'-0"

LIGHTING FIXTURE SCHEDULE

COUNT	MARK	LAMP	DESCRIPTION	MFR	CATALOG NUMBER	VOLT	WATTS	MOUNTING METHOD
4	EXIT	LED	SINGLE-FACE EDGE LIT EXIT SIGN WITH BATTERY (VERIFY LED COLOR PER LOCAL CODE)	LITHONIA	EDG-1-G-EL	120	2.5	CEILING & WALL
27	LT1	LED	LED TRACKHEAD ELECTRIFIED TRACK MOUNTED WITH VERTICAL DRIVER, 2700K, 63CRI, 1058 LUMENS, 24 DEGREE MEDIUM FLOOD BEAM, WHITE FINISH	SOLAIS	XD20-25-27K-1400-W	120	17	TRACK
			TRACK	LIGHTOLIER	6000N SERIES WH			
PROVIDE ALL CONNECTORS AND ENDCAPS AS NEEDED. PROVIDE CURRENT LIMITERS AS NEEDED. REFER TO MANUFACTURER INSTRUCTIONS.								
1 - 3 FIXTURES ON A RUN OF TRACK, USE LIGHTOLIER PLD120WH (1 Amp)								
4 - 8 FIXTURES ON A RUN OF TRACK, USE LIGHTOLIER PLD240WH (2 Amp)								
9 - 14 FIXTURES ON A RUN OF TRACK, USE LIGHTOLIER PLD360WH (3 Amp)								
6	FD2	LED	1' X 4' LED FLAT PANEL, 5000 LUMEN, 40W, 3500K	METALUX	14FP4240C	120	50	RECESSED IN CEILING GRID
3	FD2E	LED	SAME AS TYPE 'FD2' EXCEPT WITH EMERGENCY BATTERY PACK. PROVIDE REMOTE TEST SWITCH IF REQUIRED BY LOCAL CODE	METALUX	14FP4240C	120	50	RECESSED IN CEILING GRID
2	H	T8	2' X 4' RECESSED / LED TROFFER	METALUX	24GR-LD5-64-F1-UNV-L835-CD1-U	120	96	RECESSED IN CEILING GRID
3	HE	T8	SAME AS TYPE 'H' EXCEPT WITH EMERGENCY BATTERY PACK. PROVIDE REMOTE TEST SWITCH IF REQUIRED BY LOCAL CODE	METALUX	24GR-LD5-64-F1-UNV-EL14W-CD1-U	120	96	RECESSED IN CEILING GRID
0	LA3	LED	RECESSED DOWNLIGHT, 2700K	AMERLUX	HORNET-HP-R-SR-FRAME-1-LED-120/ HORNET-HP-R-TRIM-1-18-LED-E-BT-120-2770MFL-ET-2700	120	18	RECESSED IN GWB CEILING

ALL FIXTURES WITH EMERGENCY BATTERY BACK-UP SHALL BE CAPABLE OF ILLUMINATING LAMPS FOR A MINIMUM OF 90 MIN.
*EMERGENCY BALLASTS FOR FLOURESCENT LAMPS SHALL BE CAPABLE OF PRODUCING 1400 LUMENS.
*EMERGENCY BALLASTS ARE SHIPPED SEPARATELY AND SHALL BE FIELD INSTALLED.

AT&T MOBILITY
MT. VERNON, IN ENTD
510 E. 4th Street, Mt Vernon, IN 47620
EAST REGION

ARCH/ENGR OF RECORD

DESIGNED BY
BDR
DRAWN BY
KAS
CHECKED BY
SJD
PROJECT NUMBER
C06898.893.00

DATE
11/09/18
TITLE
REFLECTED CEILING PLAN

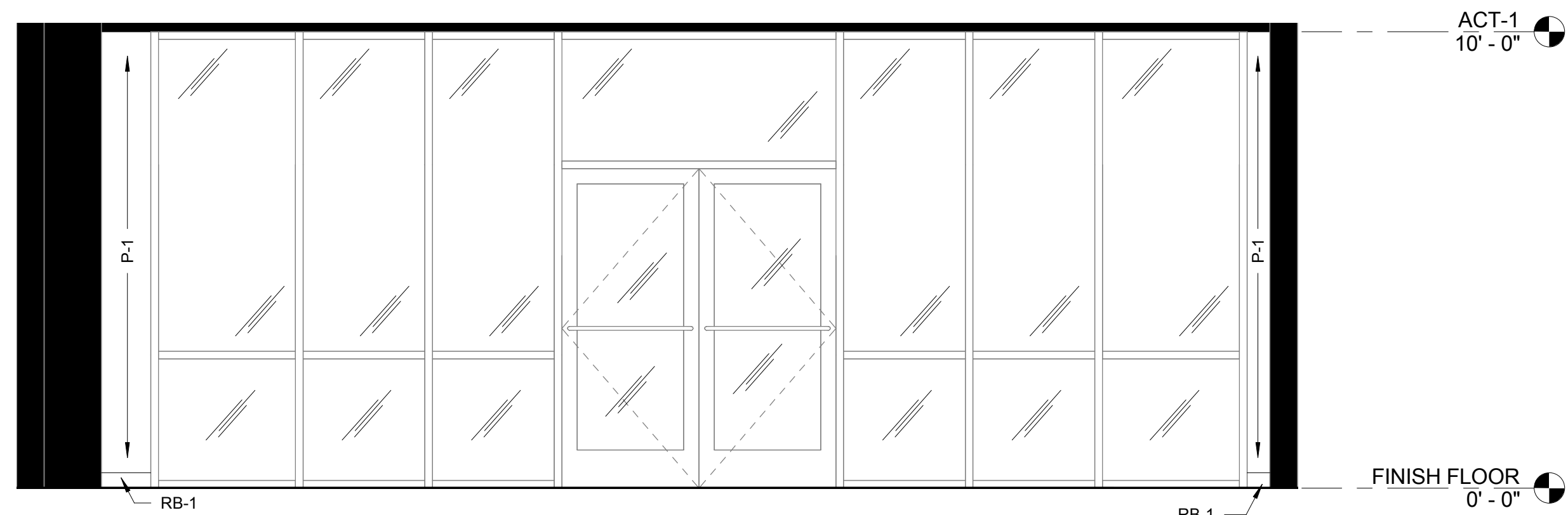
DRAWING NO.
A104

NOT FOR PERMIT OR CONSTRUCTION

1 | 2 | 3 | 4 | 5 | 6



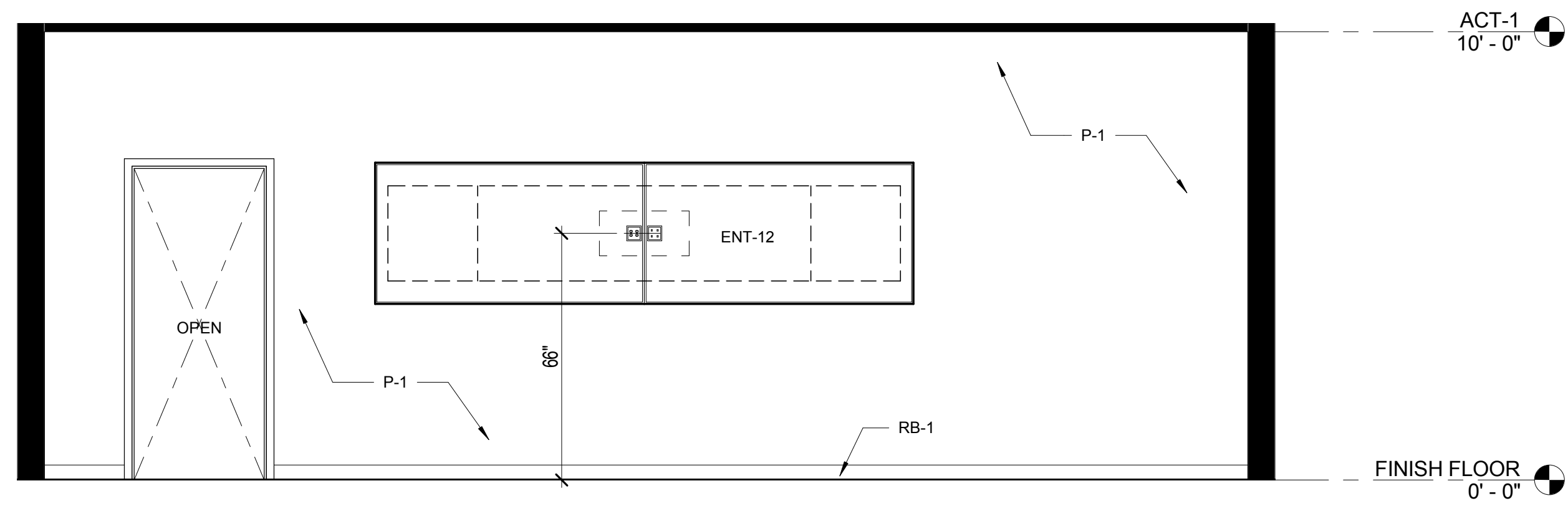
4 ELEVATION @ SALES FLOOR 4
A201 3/8" = 1'-0"



3 ELEVATION @ SALES FLOOR 3
A201 3/8" = 1'-0"



2 ELEVATION @ SALES FLOOR 2
A201 3/8" = 1'-0"



1 ELEVATION @ SALES FLOOR 1
A201 3/8" = 1'-0"

AT&T MOBILITY
MT. VERNON, IN ENTD
510 E. 4th Street, Mt Vernon, IN 47620
EAST REGION

FOR DESIGN INTENT SET ONLY
NOT FOR CONSTRUCTION

ARCH/ENGR OF RECORD

DESIGNED BY

BDR

DRAWN BY

KAS

CHECKED BY

SJD

PROJECT NUMBER

C06898.893.00

DATE

11/09/18

TITLE

SALES FLOOR ELEVATIONS

DRAWING NO.

A201

NOT FOR PERMIT OR CONSTRUCTION

Architects, Engineers

2727 Paces Ferry Road | Bldg 1
Suite 1800
Atlanta | Georgia | 30339
770-933-9242 | 770-933-9246 f

Offices in Melbourne, Orlando, West Palm Beach, Atlanta, Charleston, Everett, Mexico

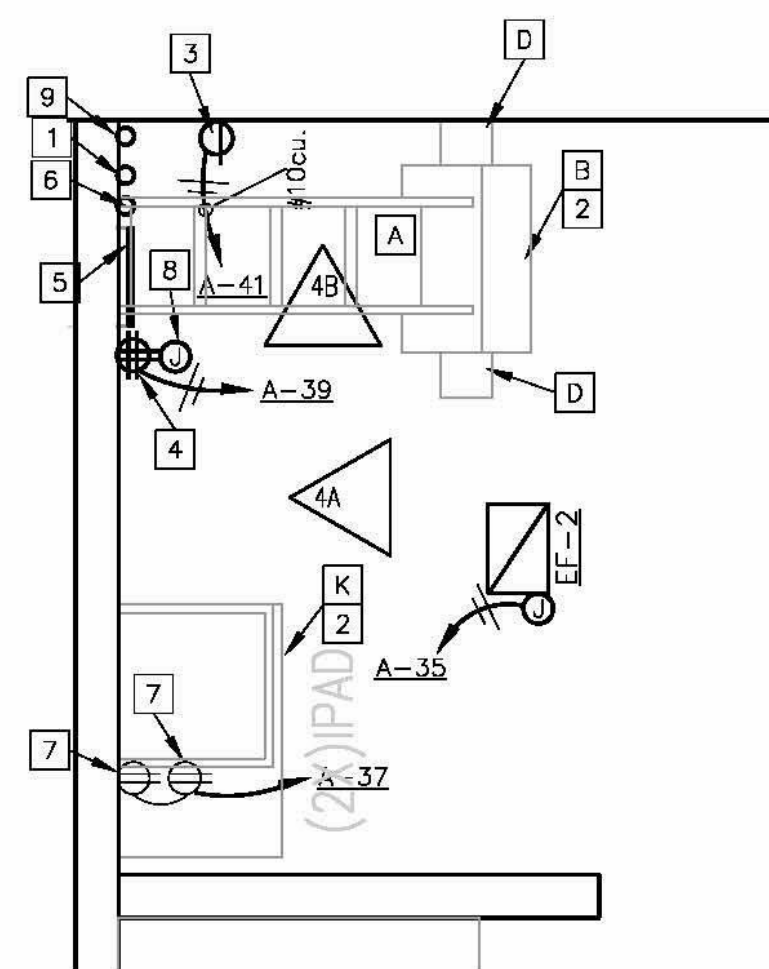
These plans are protected by Federal Copyright protection. Unauthorized use may result in an infringement action.

ISSUE FOR DESIGN INTENT SET

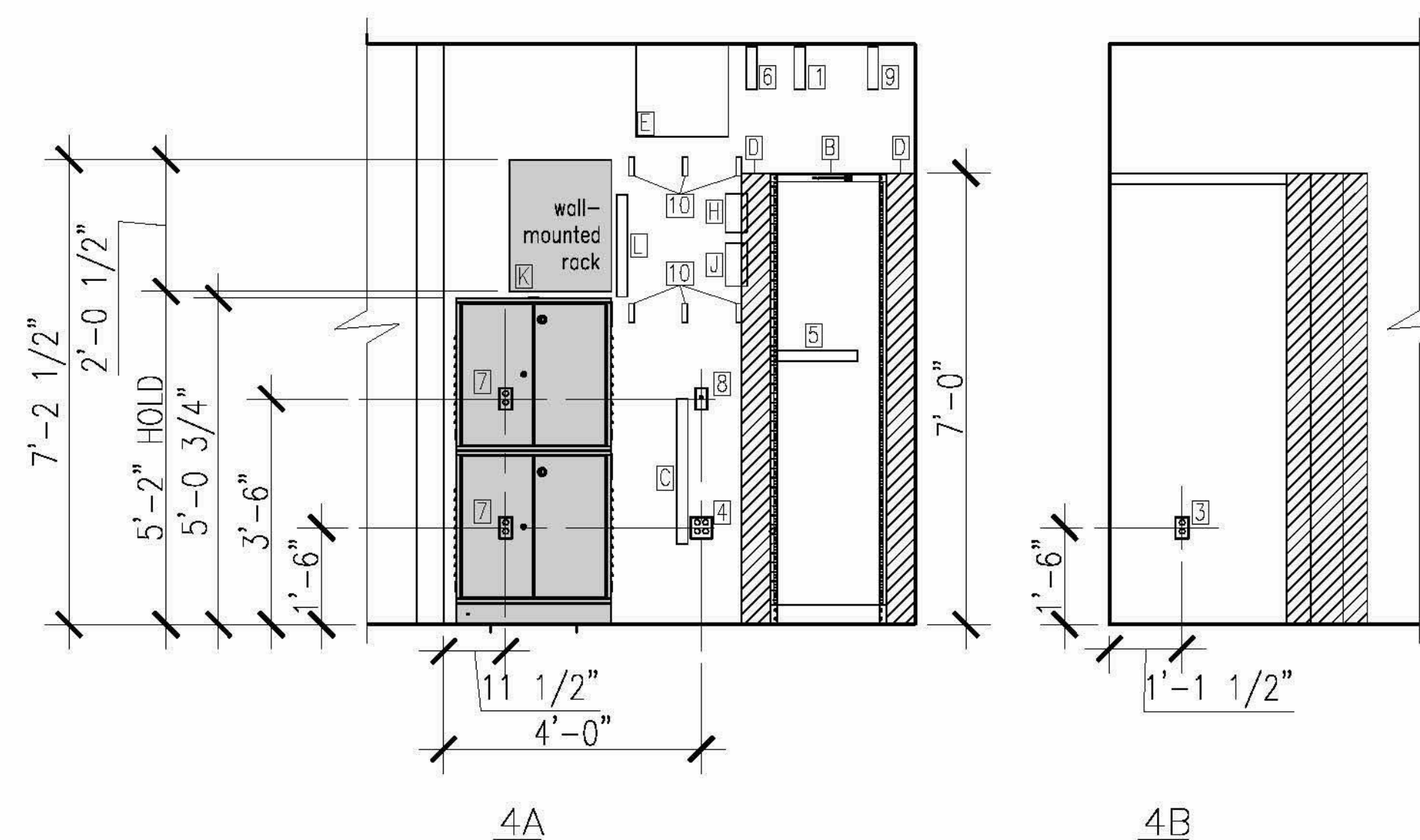
REVISION Δ

RACK -- KEYED ELECTRICAL NOTES:

- 1 GC SHALL PROVIDE AND EXTEND 2" CONDUIT WITH PULL STRING AND BUSHING FROM MDF RACK AREA TO NEW WEATHER HEAD PROVIDED BY GC FOR SATELLITE. FIELD VERIFY EXACT LOCATIONS AND ROUTING IN FIELD. COORDINATE INSTALLATION WITH AT&T CONSTRUCTION MANAGER. COORDINATE WITH LL ROOFER IF NOT EXISTING.
 - 2 EC SHALL TERMINATE DATA CABLING TO DATA RACK AS IDENTIFIED. SEE VIDEO/DATA DEVICE LEGEND THIS DRAWING.
 - 3 EC SHALL PROVIDE L5-30R 30A, 120V SIMPLEX RECEPTACLE.
 - 4 EC SHALL PROVIDE QUADPLEX.
 - 5 EC SHALL PROVIDE 24"x1" BUSBAR. GC SHALL ROUTE A B6 GROUND FROM BUSBAR FOR CONNECTION TO ELECTRICAL SYSTEM GROUND.
 - 6 GC SHALL PROVIDE AND EXTEND 3" CONDUIT WITH PULL STRING AND BUSHING FROM MDF RACK AREA TO EXISTING PHONE SERVICES. FIELD VERIFY EXACT LOCATION AND ROUTING IN FIELD. COORDINATE INSTALLATION WITH AT&T CONSTRUCTION MANAGER.
 - 7 EC SHALL PROVIDE DUPLEX.
 - 8 EC SHALL PROVIDE FLUSH DEVICE BOS AT TYCO CABLING WITH CONDUIT/BUSHING AND PULL STRING STUBBED ABOVE FINISHED CEILING. PROVIDE BLANK COVER PLATE WITH 1/2" HOLE DRILLED IN THE CENTER.
 - 9 GC SHALL PROVIDE AND EXTEND 2" CONDUIT WITH PULL STRING AND BUSHING FROM MDF RACK AREA FOR AUDIO CABLING. VERIFY EXACT LOCATION AND ROUTING IN FIELD. COORDINATE INSTALLATION WITH AT&T CONSTRUCTION MANAGER.
 - 10 GC SHALL PROVIDE SIX 1-7/8"W x 2-3/8"D CABLE DISTRIBUTION D-RINGS.
- PROVIDED BY VENDOR
- A LADDER TRAY TO RACK.
 - B FLOOR MOUNTED EQUIPMENT RACK.
 - C 4' POWER STRIP.
 - D VERTICAL WIRE MANAGEMENT.
 - E DUMMY SECURITY PANEL MOUNTED.
 - F RJ45 EXTENSION OF ALARM LINE, JUST ABOVE CEILING WHERE LOW-VOLTAGE CABLING PENETRATION OCCURS. LABEL JACK WITH ONLY THE POTS LINE ASSOCIATED WITH IT.
 - G SECURITY PANEL MOUNTED ABOVE CEILING.
 - H T1 SMART JACK/ETHERNET CONNECTION.
 - J LEC NETWORK INTERFACE BLOCK, RJ21X OR 66 BLOCK.
 - K WALL MOUNTED EQUIPMENT RACK.
 - L 2' POWER STRIP WITH 15' CORD.



VIDEO/DATA RACK DETAIL
SCALE: 1/2" = 1'-0"



VIDEO/DATA RACK ELEVATION DETAIL
SCALE: N.T.S.

IT RACK DETAILS
12" = 1'-0"

AT&T MOBILITY
MT. VERNON, IN ENTD
510 E. 4th Street, Mt Vernon, IN 47620
EAST REGION

ARCH/ENGR OF RECORD

DESIGNED BY
BDR
DRAWN BY
KCC
CHECKED BY
SJD
PROJECT NUMBER
C06898.893.00

DATE
11/09/18
TITLE
IT RACK DETAILS

DRAWING NO.
A300

NOT FOR PERMIT OR CONSTRUCTION

1 | 2 | 3 | 4 | 5 | 6

E

D

C

B

A