



## 790 W Lake Lansing Rd

East Lansing, Michigan 48823

### Property Highlights

- Located at Harrison and W Lake Lansing Rds
- Attractive Brick office building
- Ample parking Convenient to MSU campus and US-127
- Across from Grand Grillin restaurant
- Convenient to MSU Campus, Eastwood Towne Center, and the US-127/Lake Lansing Rd interchange

### Offering Summary

Lease Rate:	\$475.00 - 500.00 per month (Gross)
Building Size:	10,000 SF
Available SF:	250 - 291 SF

Spaces	Lease Rate
Suite 300B	\$500 per month
Suite 300C	\$475 per month

### For More Information



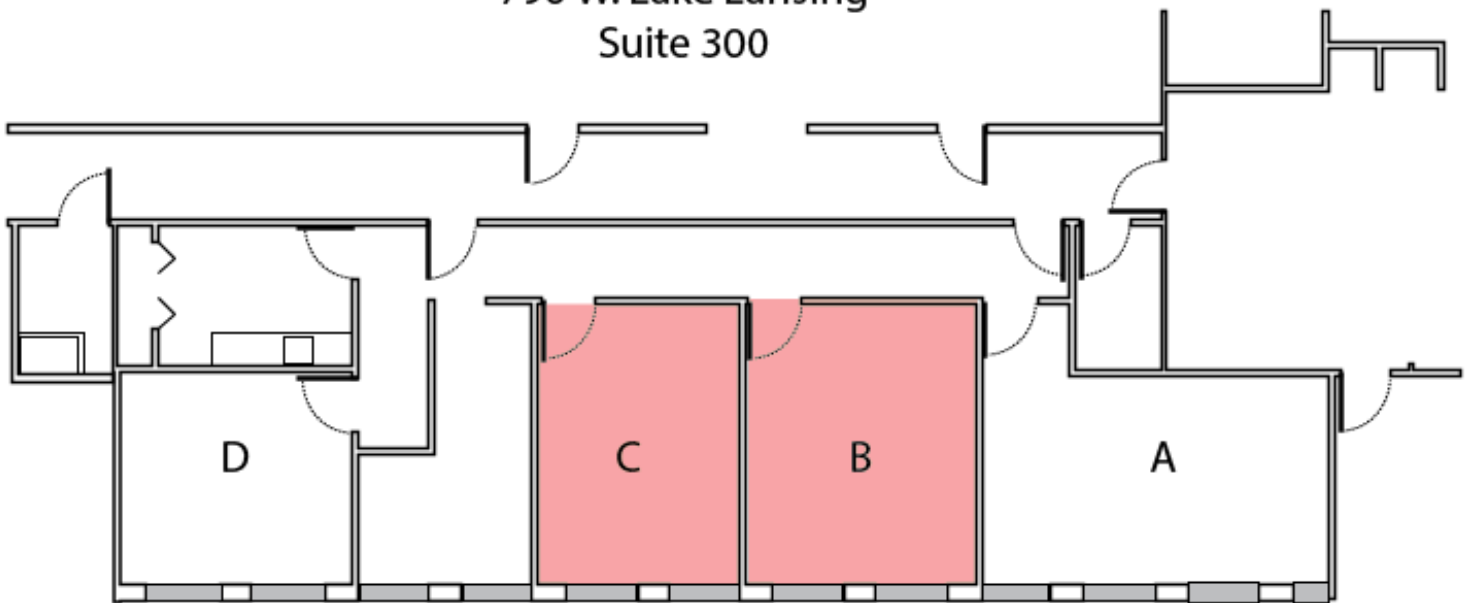
#### Steve Slater

Associate Broker

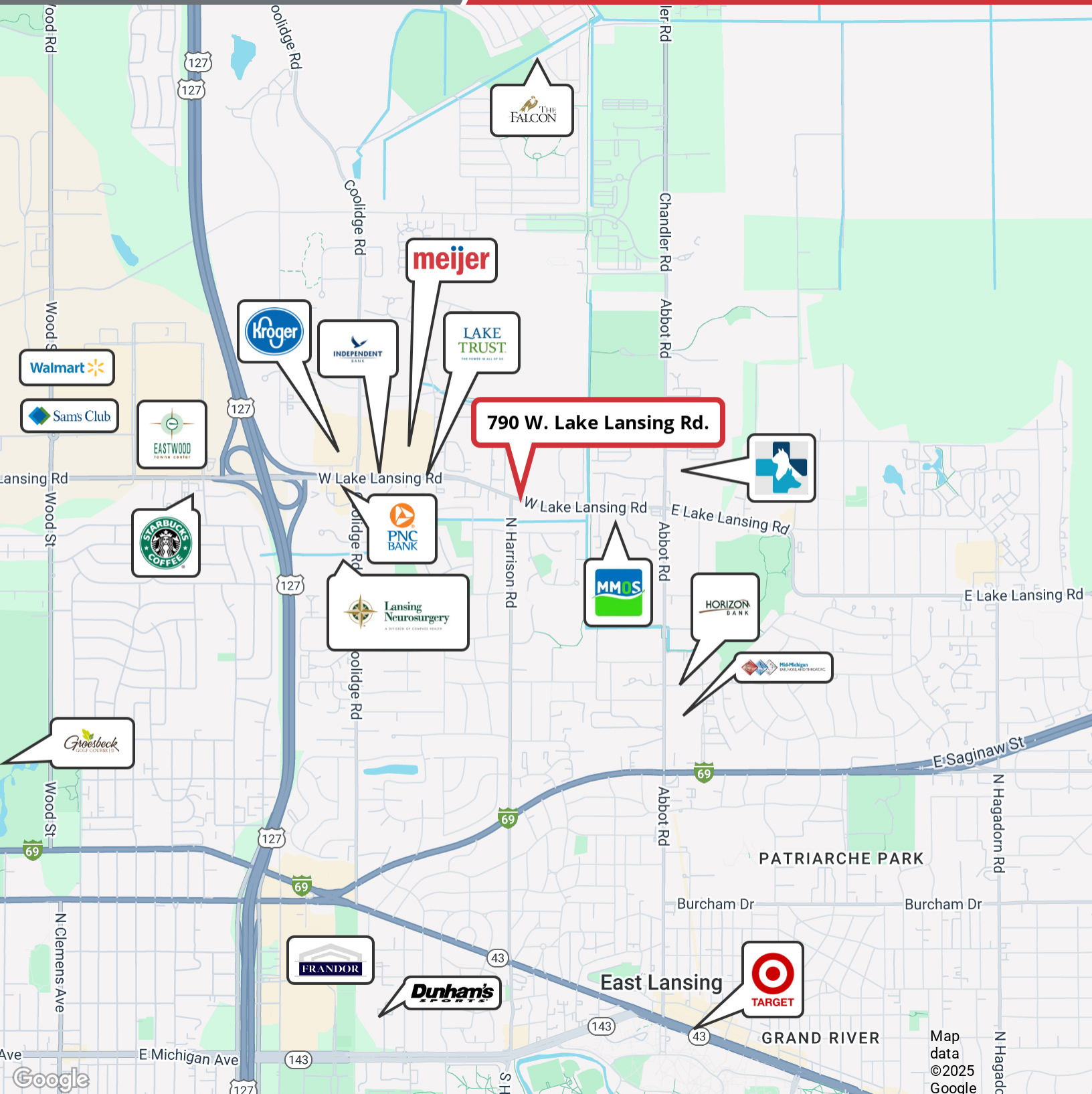
O: 517 487 9222 | C: 517 749 7914

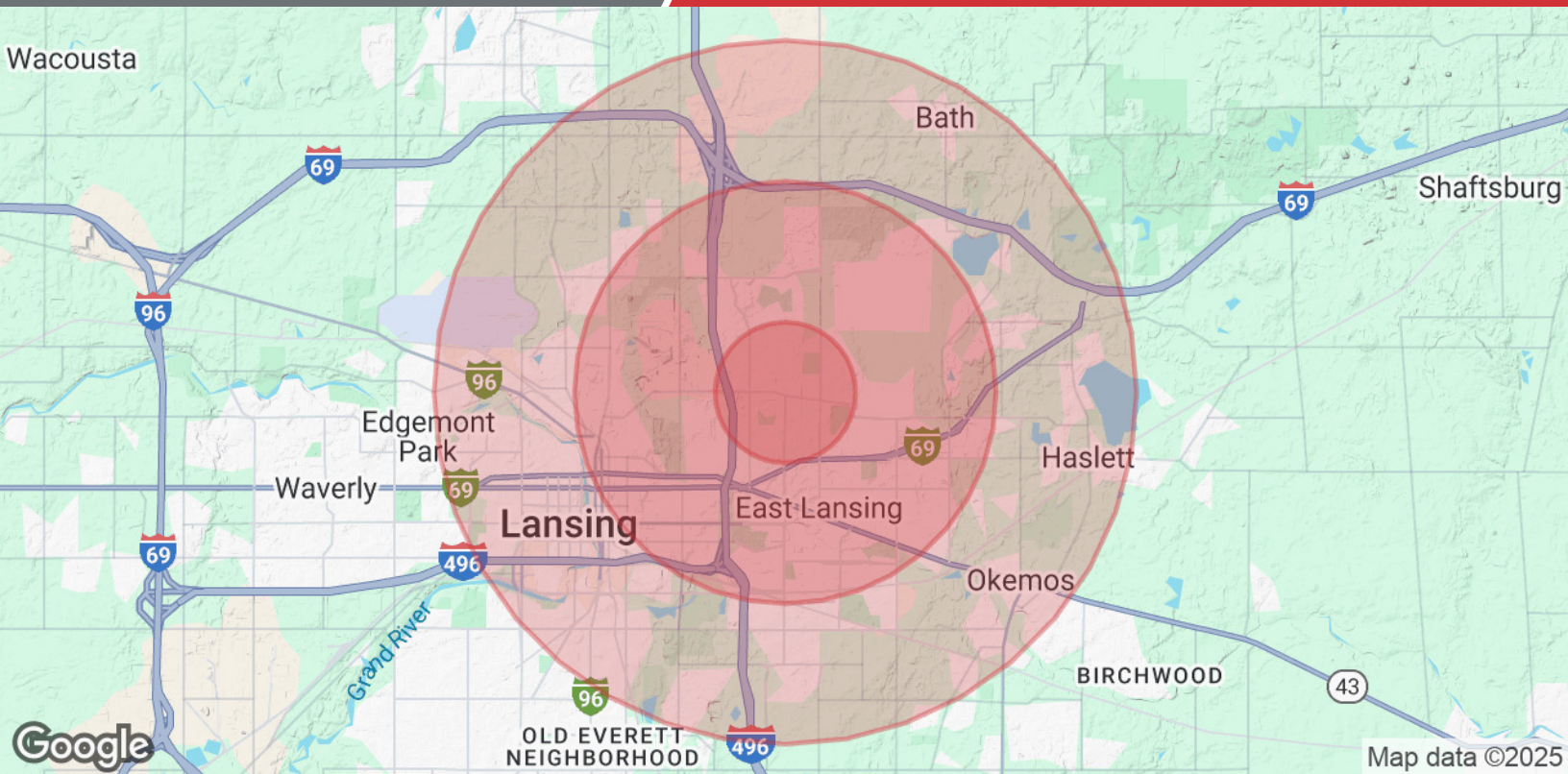
steveslater@naimidmichigan.com

790 W. Lake Lansing  
Suite 300









Population	1 Mile	3 Miles	5 Miles
Total Population	10,307	79,201	149,589
Average Age	32.0	31.2	32.9
Average Age (Male)	32.5	29.7	31.5
Average Age (Female)	32.3	32.3	33.8
Households & Income	1 Mile	3 Miles	5 Miles
Total Households	5,242	30,648	64,179
# of Persons per HH	2.0	2.6	2.3
Average HH Income	\$67,885	\$67,325	\$63,414
Average House Value	\$174,968	\$141,506	\$134,511

2020 American Community Survey (ACS)