

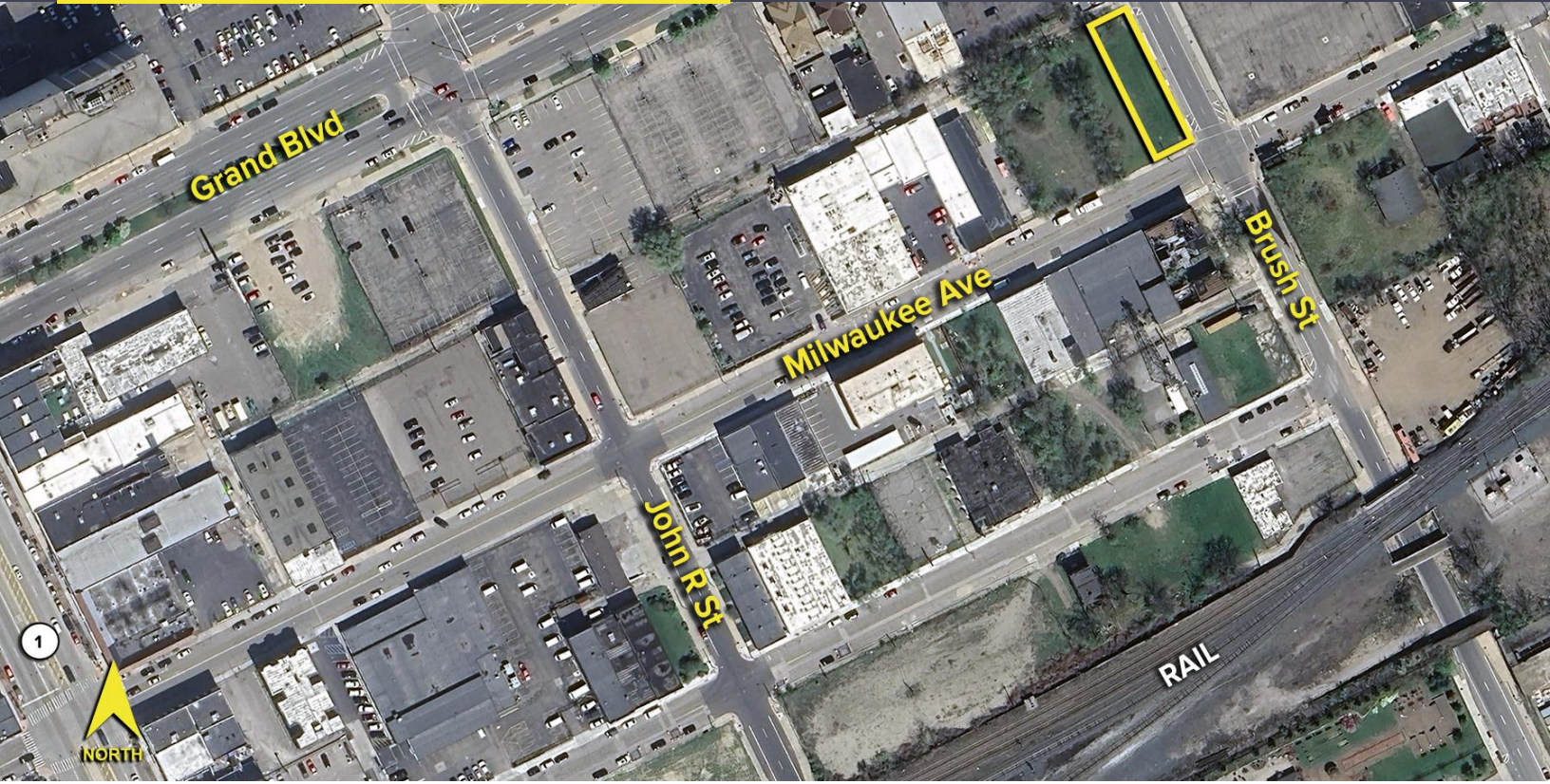
335 E. MILWAUKEE AVENUE  
DETROIT, MICHIGAN

LAND FOR SALE  
0.17 Acres Available



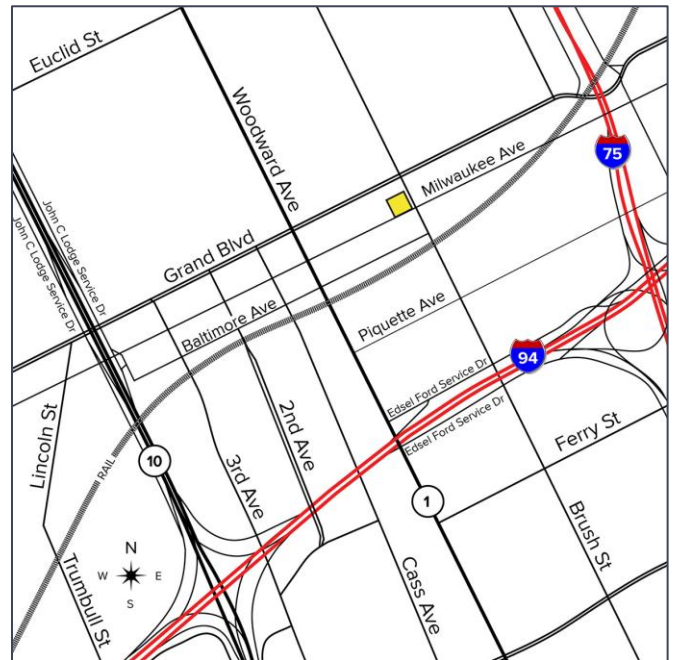
**SIGNATURE  
ASSOCIATES**  
KNOW SIGNATURE | KNOW RESULTS

**SUBSTANTIAL PRICE REDUCTION!**



## PROPERTY FEATURES

- 0.17 acres available
- 45' x 160' lot
- Zoned M3
- Easy access to I-75 and I-94
- Available for individual sale or as part of an 8-property portfolio totaling 30,700 square feet and 1.21 acres
- Sale Price: \$100,000



For more information, please contact:

**STEVE GORDON**

(248) 948 0101

sgordon@signatureassociates.com

**CHRIS MONSOUR**

(248) 948 0107

cmonsour@signatureassociates.com

**JOE STACK**

(248) 359 0615

jstack@signatureassociates.com

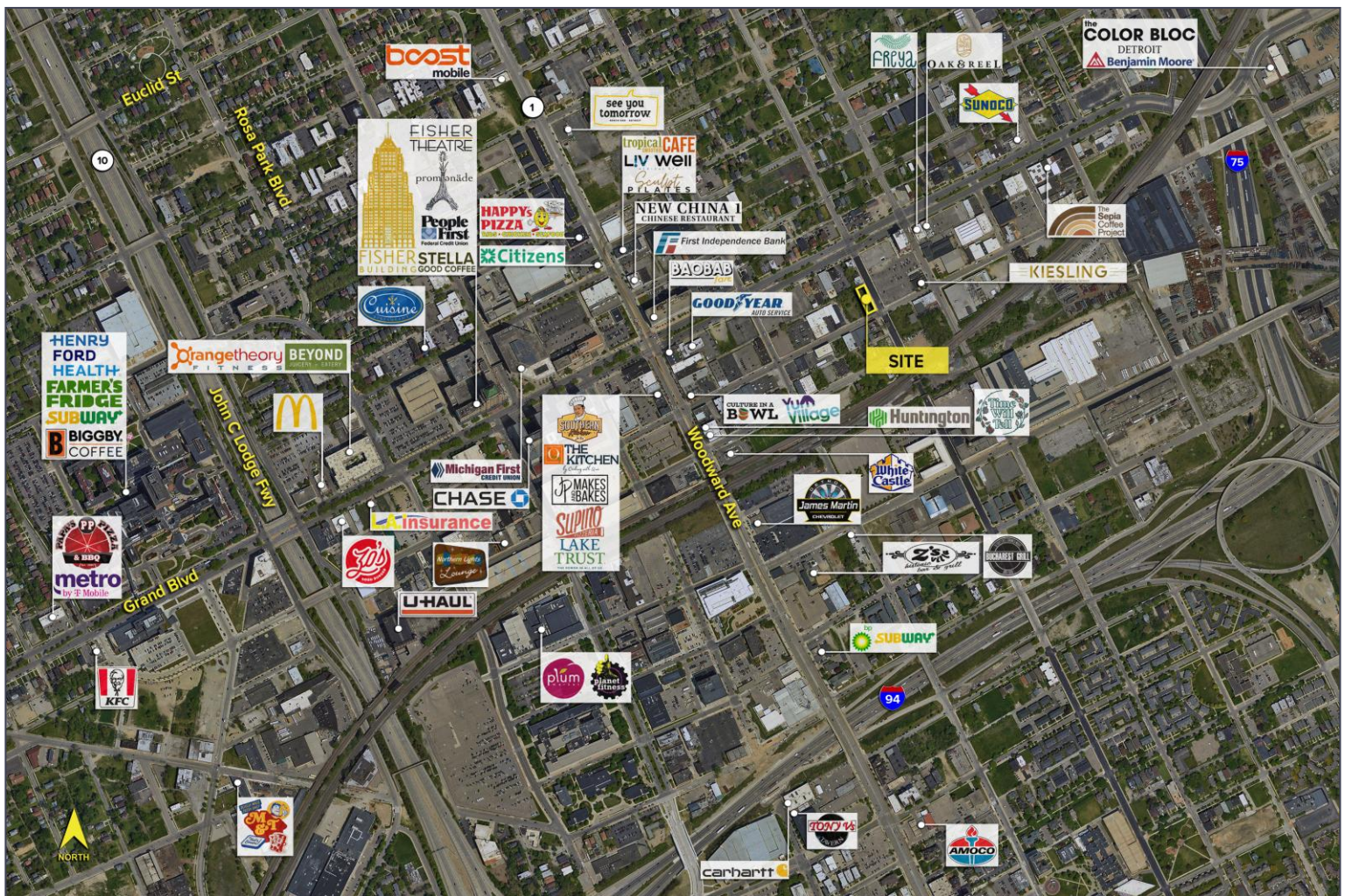
# 335 E. Milwaukee Avenue – Detroit, Michigan

## Land For Sale

0.17  
Acres  
AVAILABLE

DEMOGRAPHICS		
	POPULATION	MED. HH INCOME
1 MILE	16,714	\$43,682
3 MILE	142,153	\$43,793
5 MILE	327,828	\$43,760

TRAFFIC COUNTS (TWO-WAY)	
16,725	E. Grand Blvd. E Woodward Ave.
17,993	E. Grand Blvd. W Woodward Ave.
13,773	Woodward Ave. S of E. Grand Blvd.
11,554	Woodward Ave. N of E. Grand Blvd.



For more information, please contact:

**STEVE GORDON**  
(248) 948 0101

**CHRIS MONSOUR**  
(248) 948 0107

**JOE STACK**  
(248) 359 0615

**SIGNATURE ASSOCIATES**  
One Towne Square, Suite 1200  
Southfield, MI 48076  
www.signatureassociates.com