



780 W Lake Lansing Rd

East Lansing, Michigan 48823

Property Highlights

- Located at Harrison Crossings – Brick building with great visibility to Lake Lansing Road
- Suite 500 has 3 offices with a kitchenette
- Suite 800 in Lower Level (2,250 SF) with wooded view
- Ample parking – free on-site
- Convenient to Michigan State campus
- Near US-127/Lake Lansing Rd. hub and Eastwood Towne Center

Offering Summary

Lease Rate:	\$8.00 - 15.00 SF/yr (MG)
Building Size:	19,000 SF
Available SF:	1,001 - 2,250 SF

Spaces	Lease Rate	Space Size
Suite 500	\$15.00 SF/yr	1,001 SF
Suite 800	\$8.00 SF/yr	2,250 SF

For More Information



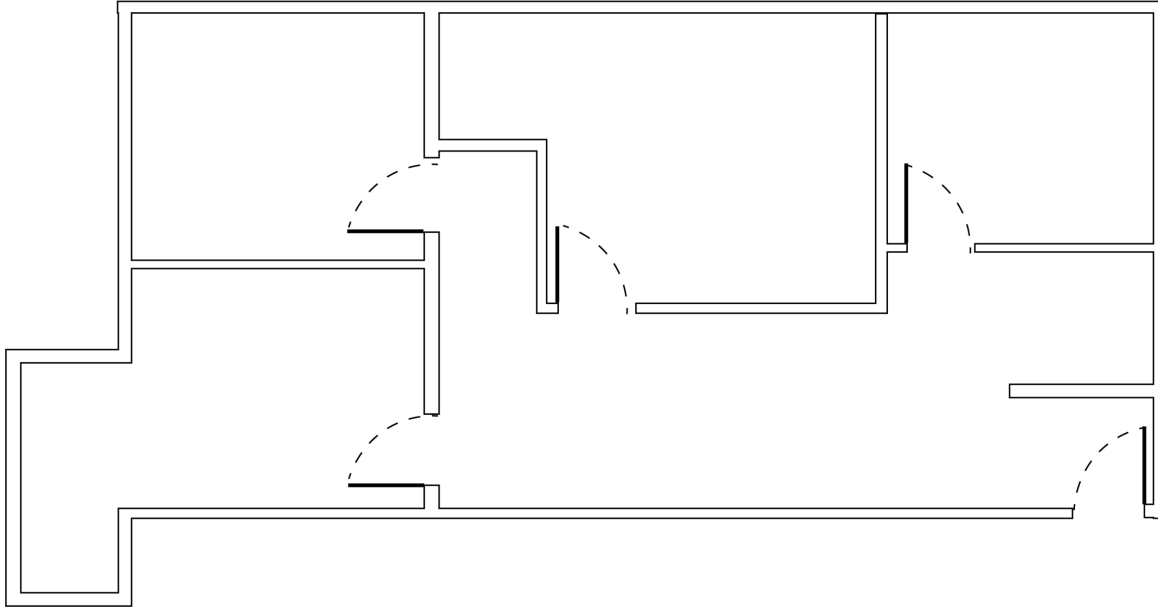
Steve Slater

Associate Broker

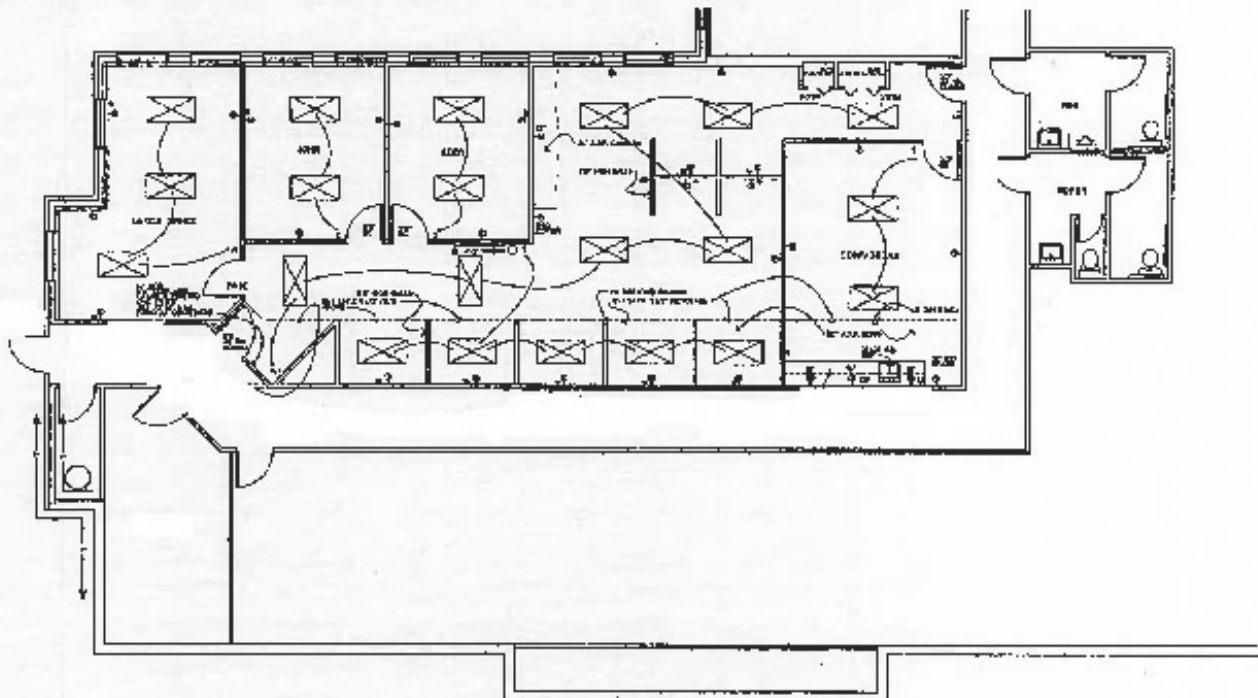
O: 517 487 9222 | C: 517 749 7914

steveslater@naimidmichigan.com

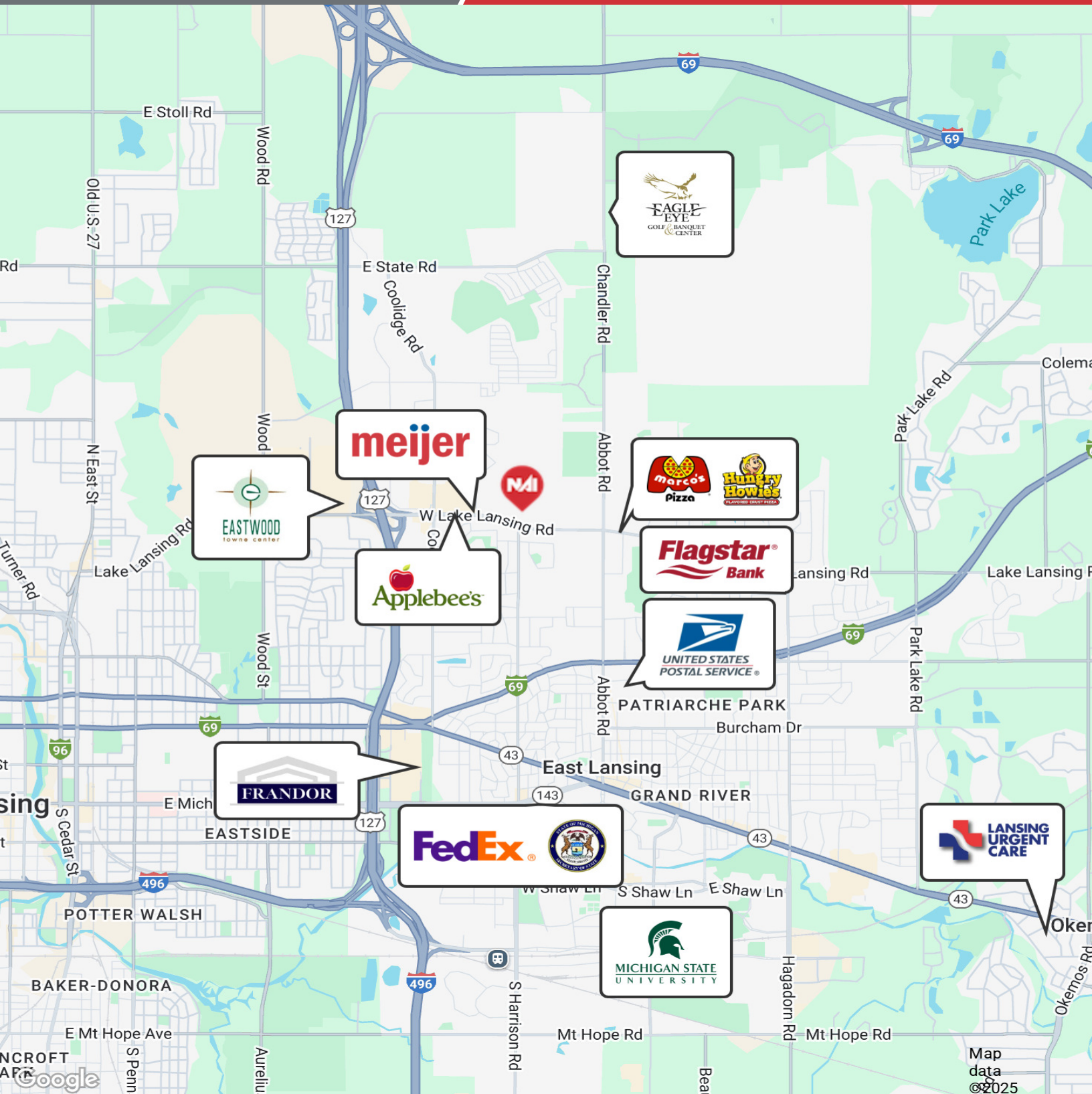
780 W Lake Lansing Rd, Suite 500
1,001 SF

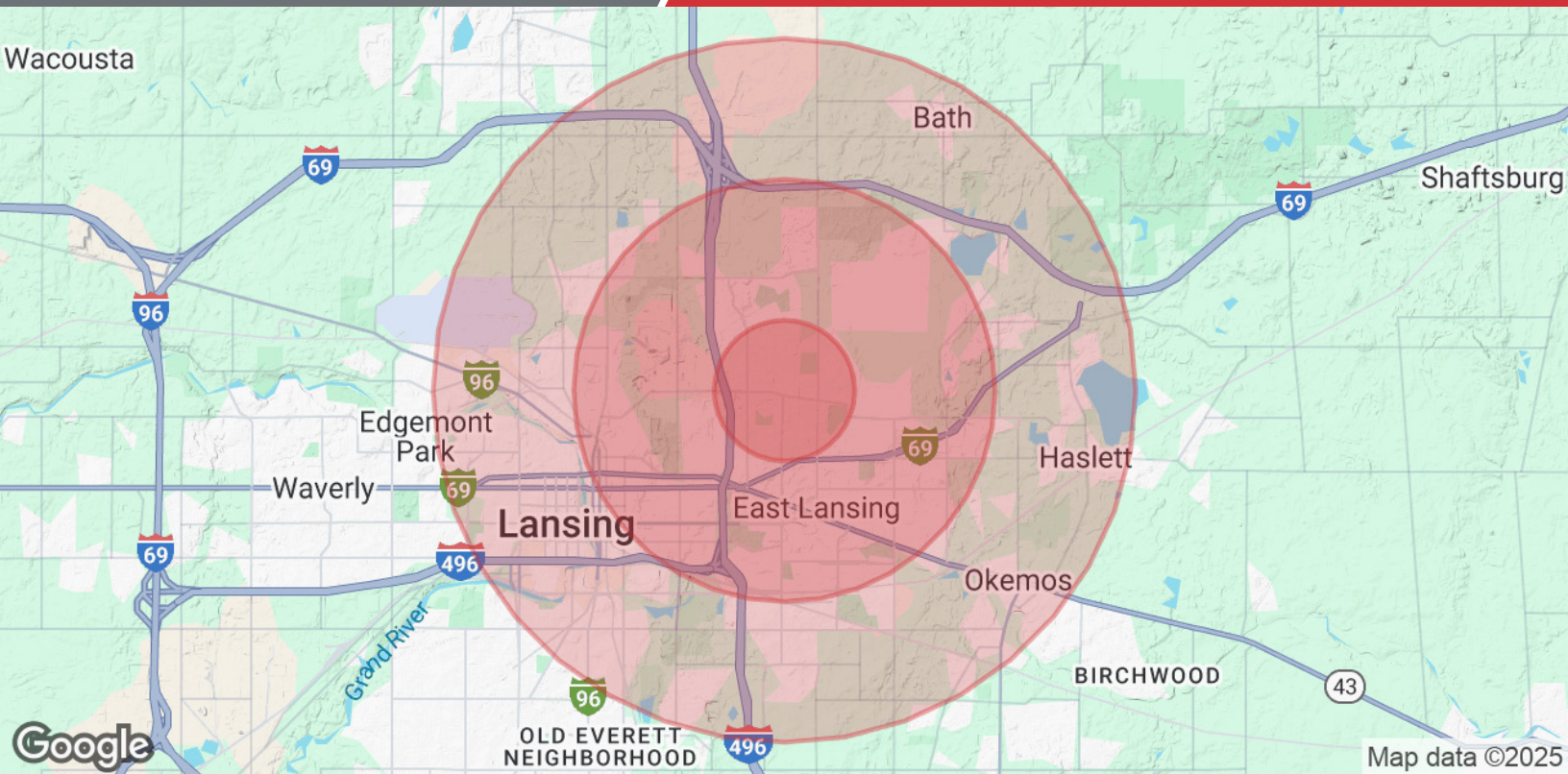


Suite 500



Suite 800





Population	1 Mile	3 Miles	5 Miles
Total Population	9,243	78,623	150,939
Average age	30.1	28.0	29.5
Average age (Male)	32.4	28.3	29.3
Average age (Female)	27.7	28.1	29.9
Households & Income	1 Mile	3 Miles	5 Miles
Total households	4,226	27,259	56,478
# of persons per HH	2.2	2.9	2.7
Average HH income	\$58,380	\$56,595	\$54,166
Average house value	\$191,278	\$172,740	\$151,421

* Demographic data derived from 2020 ACS - US Census