

7446 WOODWARD AVENUE
DETROIT, MICHIGAN

RETAIL/OFFICE FOR LEASE
1,772 Square Feet Available

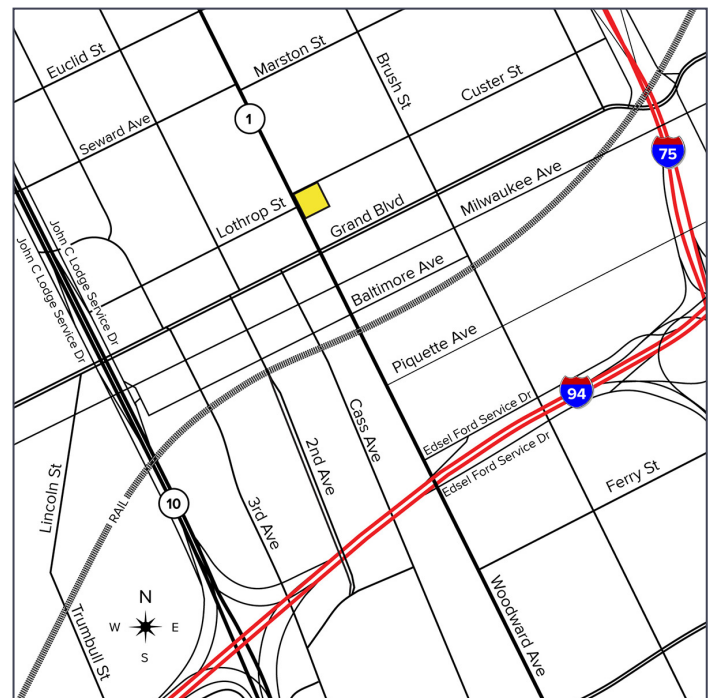


**SIGNATURE
ASSOCIATES**
KNOW SIGNATURE | KNOW RESULTS



PROPERTY FEATURES

- 1,772 square feet available
- New Center retail/office opportunity
- Multi-tenant building with great views
- Dedicated parking
- Located on the QLine
- Lease Rate: Contact Broker



For more information, please contact:

JOE STACK
(248) 359 0615
jstack@signatureassociates.com

CHRIS MONSOUR
(248) 948 0107
cmonsour@signatureassociates.com

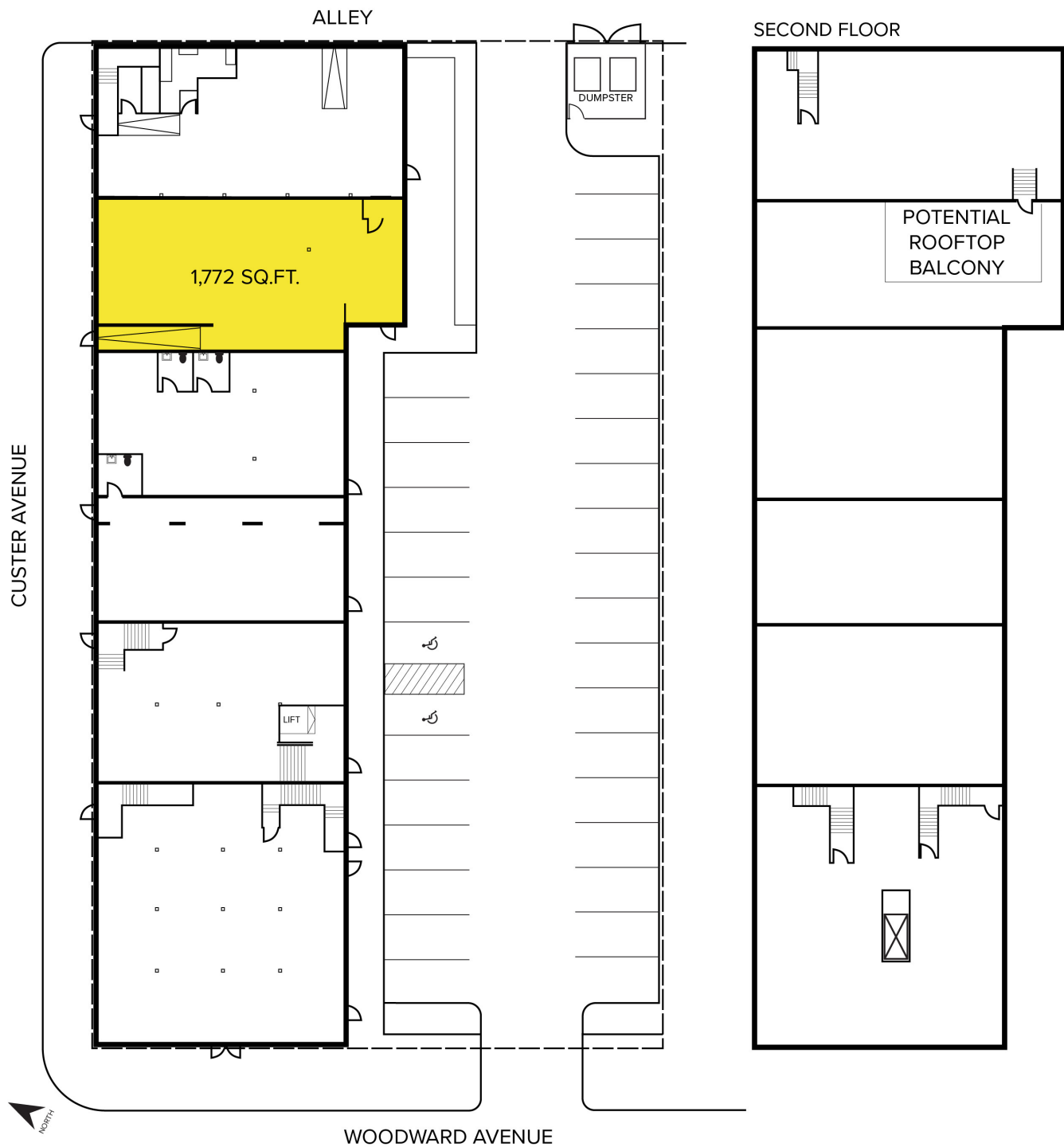
SIGNATURE ASSOCIATES
One Towne Square, Suite 1200
Southfield, MI 48076
www.signatureassociates.com

7446 Woodward Avenue - Detroit, Michigan

Retail/Office For Lease

1,772
Square Feet
AVAILABLE

Site Plan



7446 Woodward Avenue
Detroit, Michigan

© SIGNATURE ASSOCIATES

For more information, please contact:

JOE STACK
(248) 359 0615
jstack@signatureassociates.com

CHRIS MONSOUR
(248) 948 0107
cmonsour@signatureassociates.com

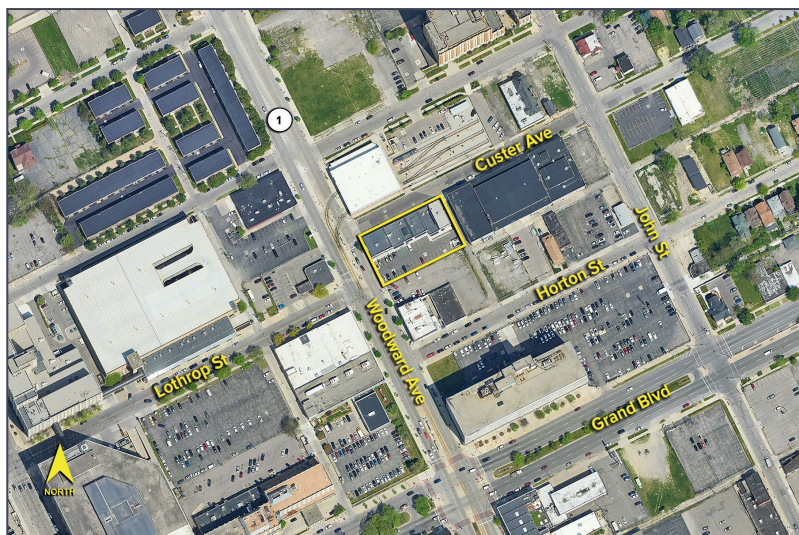
SIGNATURE ASSOCIATES
One Towne Square, Suite 1200
Southfield, MI 48076
www.signatureassociates.com

Information is subject to verification and no liability for errors or omissions is assumed. Price is subject to change and listing withdrawal.

7446 Woodward Avenue - Detroit, Michigan

Retail/Office For Lease

1,772
Square Feet
AVAILABLE

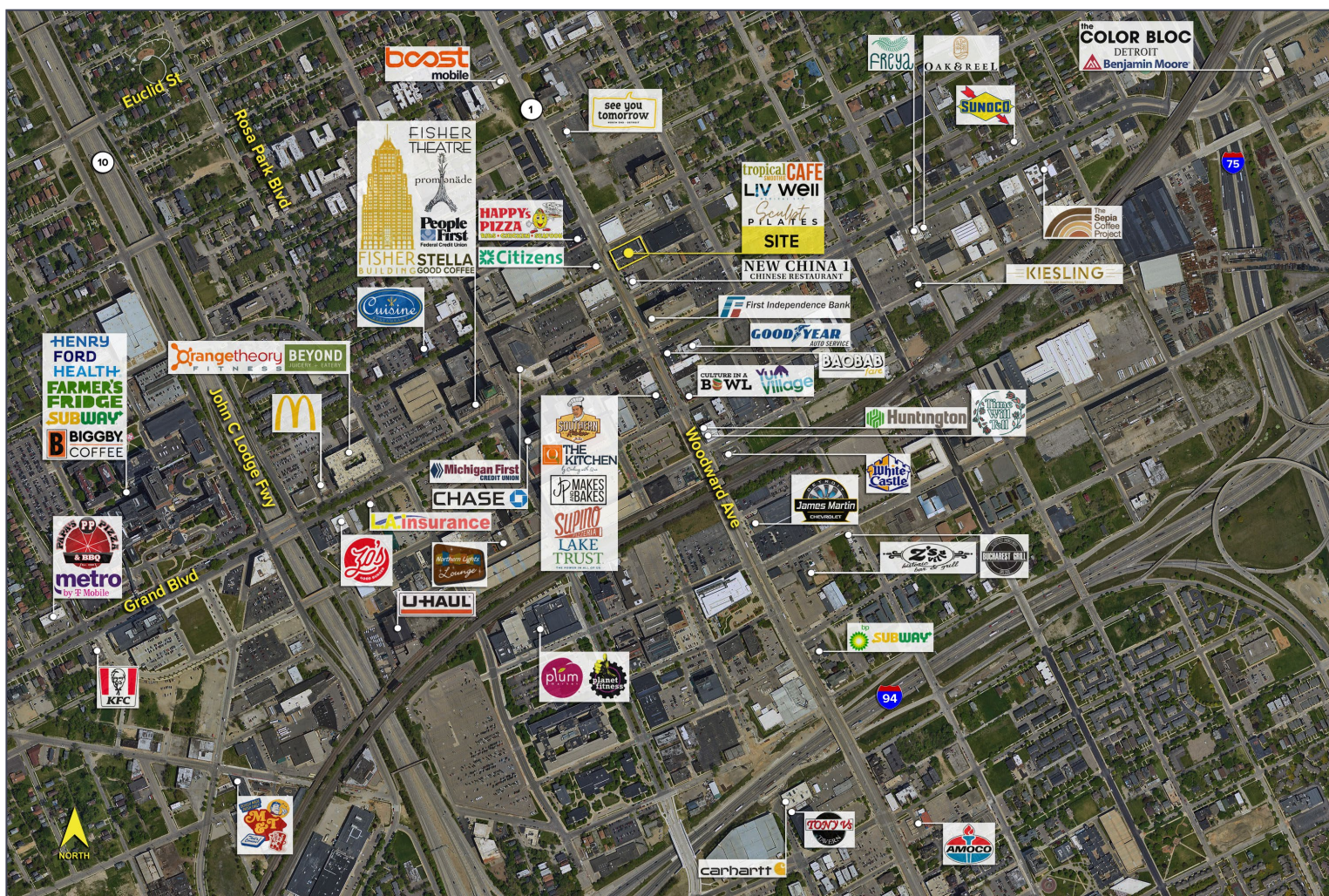


DEMOGRAPHICS

	POPULATION	MED. HH INCOME
1 MILE	16,013	\$42,465
3 MILE	142,783	\$42,476
5 MILE	335,479	\$43,266

TRAFFIC COUNTS (TWO-WAY)

24,242	Woodward Ave. N. of Grand Blvd.
25,810	Woodward Ave. S. of Grand Blvd.
17,664	Grand Blvd. E. of Woodward Ave.
16,513	Grand Blvd. W. of Woodward Ave.



For more information, please contact:

JOE STACK
(248) 359 0615
jstack@signatureassociates.com

CHRIS MONSOUR
(248) 948 0107
cmonsour@signatureassociates.com

SIGNATURE ASSOCIATES
One Towne Square, Suite 1200
Southfield, MI 48076
www.signatureassociates.com