

2625 E. OAKLEY PARK RD.  
COMMERCE TWP., MICHIGAN

OFFICE FOR LEASE  
2,100 – 6,965 Square Feet Available



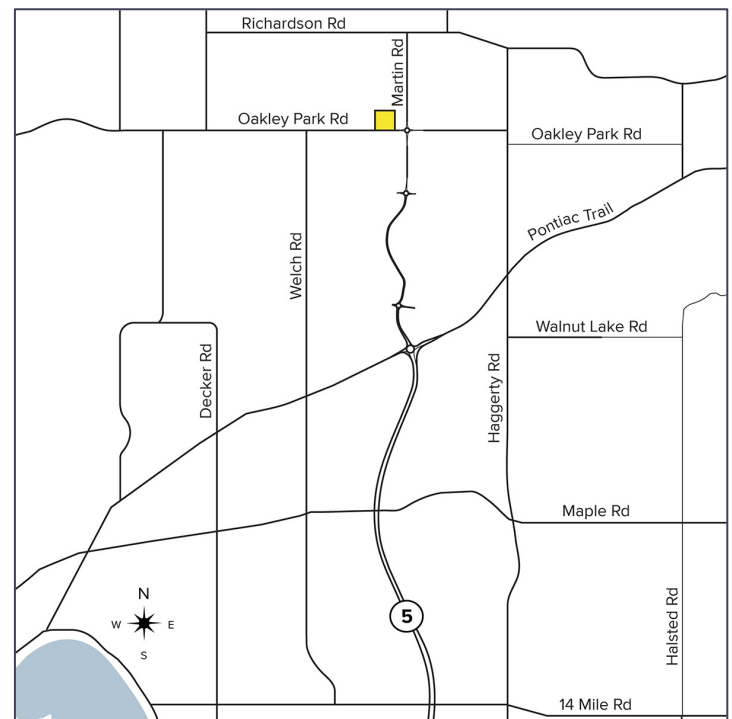
**SIGNATURE  
ASSOCIATES**  
KNOW SIGNATURE | KNOW RESULTS

**EXTERIOR SIGNAGE AVAILABLE**



## PROPERTY FEATURES

- 2,100 – 6,965 square feet available on first floor
- Zoned TLM
- Beautifully built space, with backup generator and exterior signage available
- Excellent location, close to upscale neighborhoods, M-5 and I-96 expressways
- Ample parking
- Plenty of nearby amenities including restaurants, hotels, executive housing, and shopping
- Lease Rate: \$17.50/sq. ft. G+U+J (entire space)  
\$19.00/sq. ft. smaller suites; G+U+J



For more information, please contact:

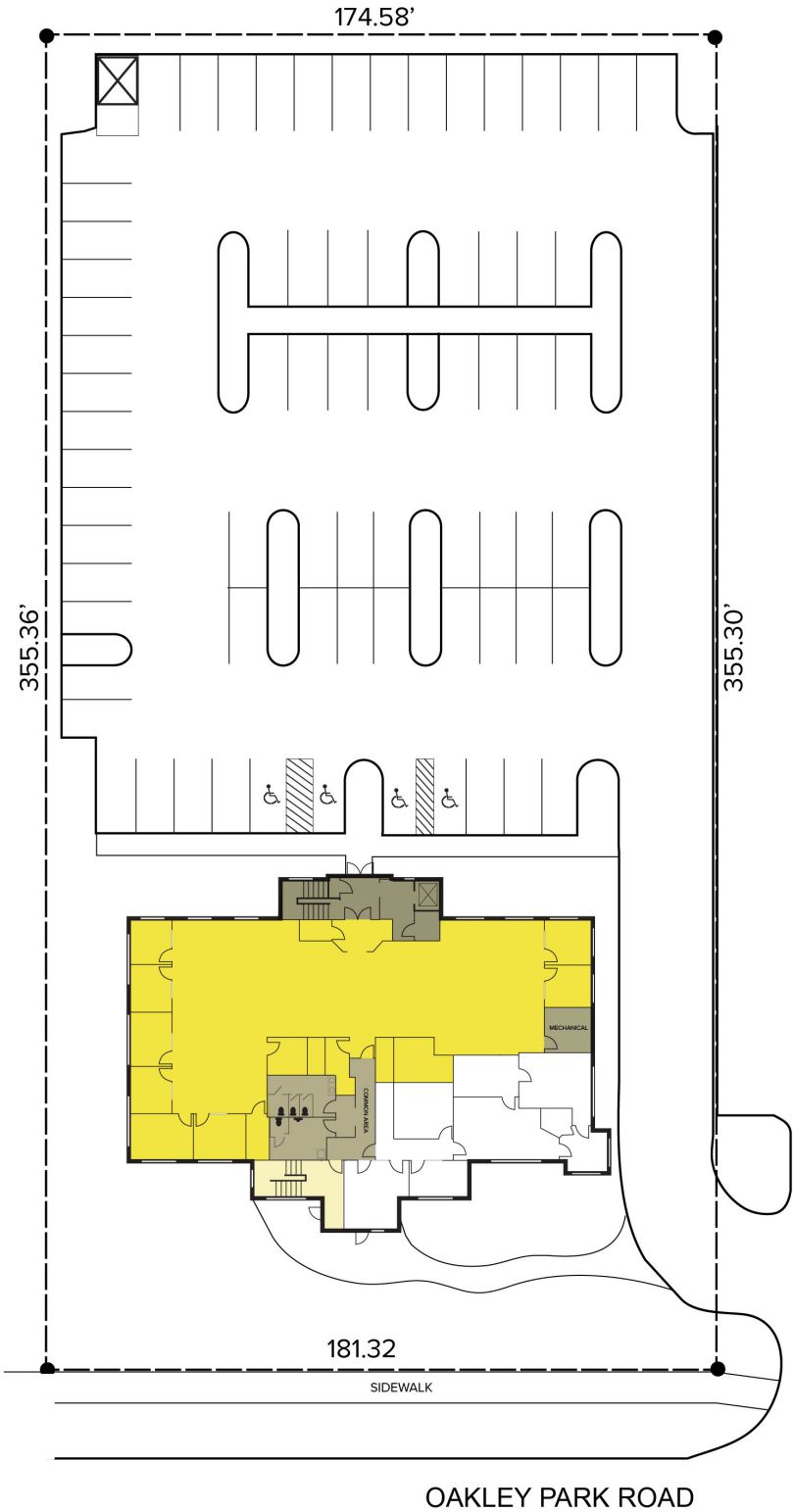
**CHRIS SECONTINE**  
(248) 799 3174  
csecontine@signatureassociates.com

**SIGNATURE ASSOCIATES**  
One Towne Square, Suite 1200  
Southfield, MI 48076  
www.signatureassociates.com

2625 E. Oakley Park Road – Commerce Twp., MI  
Office For Lease

2,100 – 6,965  
Square Feet  
AVAILABLE

Site Plan



For more information, please contact:

**CHRIS SECONTINE**  
(248) 799 3174  
csecontine@signatureassociates.com

**SIGNATURE ASSOCIATES**  
One Towne Square, Suite 1200  
Southfield, MI 48076  
www.signatureassociates.com

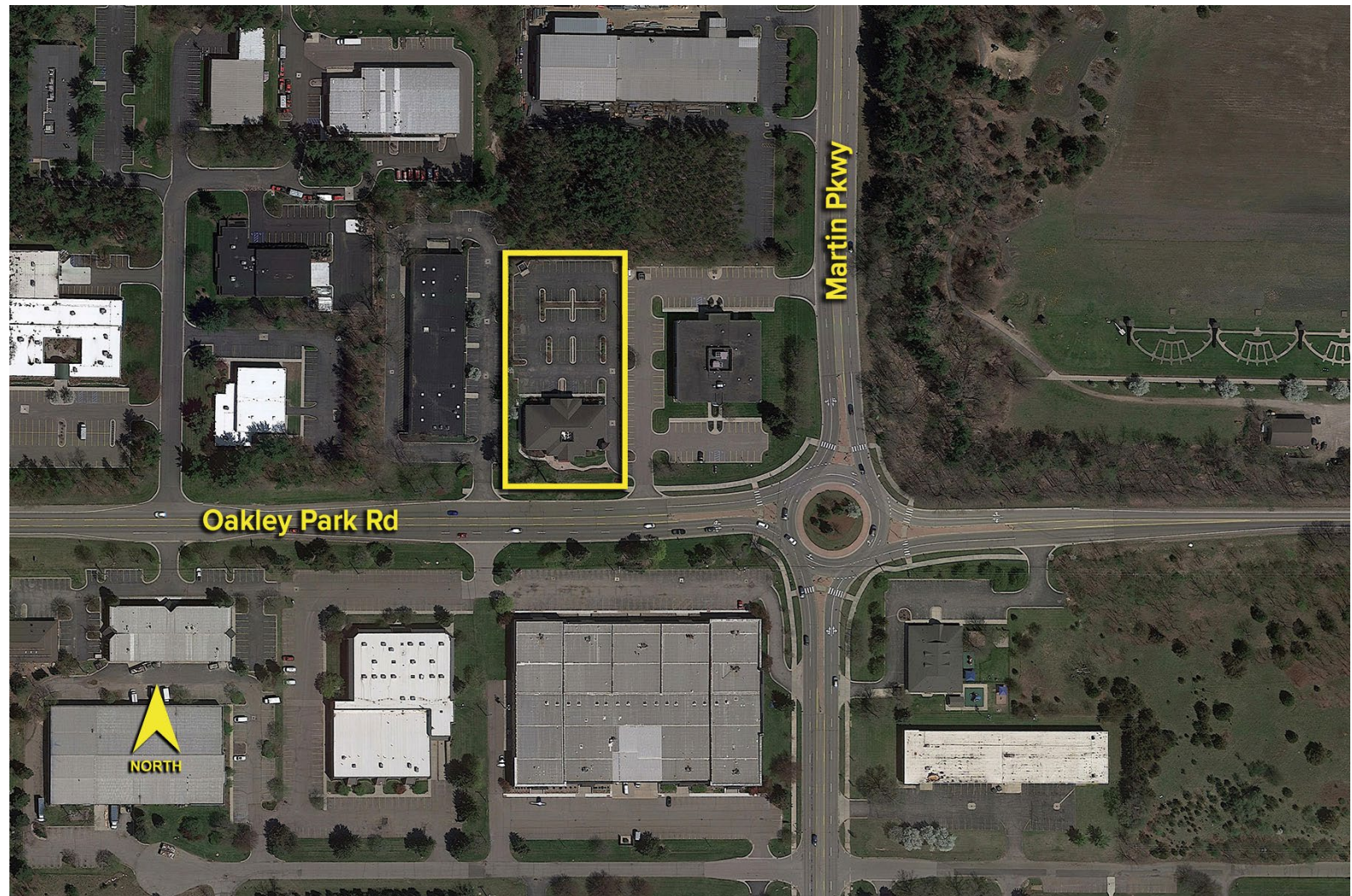
Information is subject to verification and no liability for errors or omissions is assumed. Price is subject to change and listing withdrawal.



2625 E. Oakley Park Road – Commerce Twp., MI  
Office For Lease

2,100 – 6,965  
Square Feet  
AVAILABLE

Aerial



For more information, please contact:

**CHRIS SECONTINE**  
(248) 799 3174  
[csecontine@signatureassociates.com](mailto:csecontine@signatureassociates.com)

**SIGNATURE ASSOCIATES**  
One Towne Square, Suite 1200  
Southfield, MI 48076  
[www.signatureassociates.com](http://www.signatureassociates.com)

Information is subject to verification and no liability for errors or omissions is assumed. Price is subject to change and listing withdrawal.