



PILOT

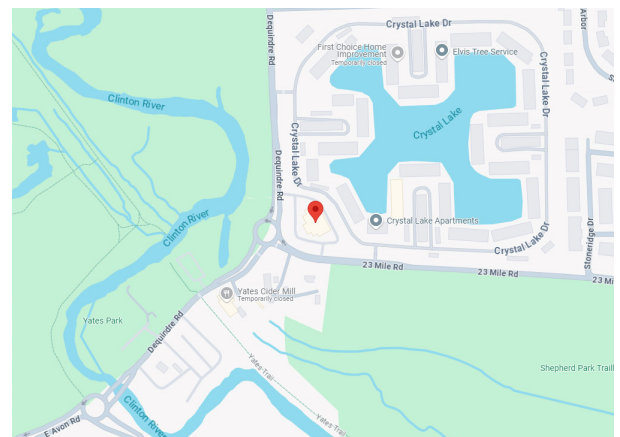
PROPERTY GROUP

51810 DEQUINDRE RD., SHELBY TOWNSHIP, MI 48316

PROPERTY OVERVIEW:

2 Spaces Ready for Occupancy.
 Prominent Visibility and Exposure.
 Ample Parking.

Property Type: Medical Office/Office Space
Cross Streets: East side of Dequindre, at 23 Mile Road
Total Square Footage: 10,500
Building Name: Sterling Plaza
Minimum Square Footage: 1,821
Maximum Square Footage: 3,777
Parcel Size: 1.23 Acres
Year Built: 1998
Zoning: C-1
Parking Spaces: 65
Lease Rate: \$17.95 psf
Lease Type: Gross



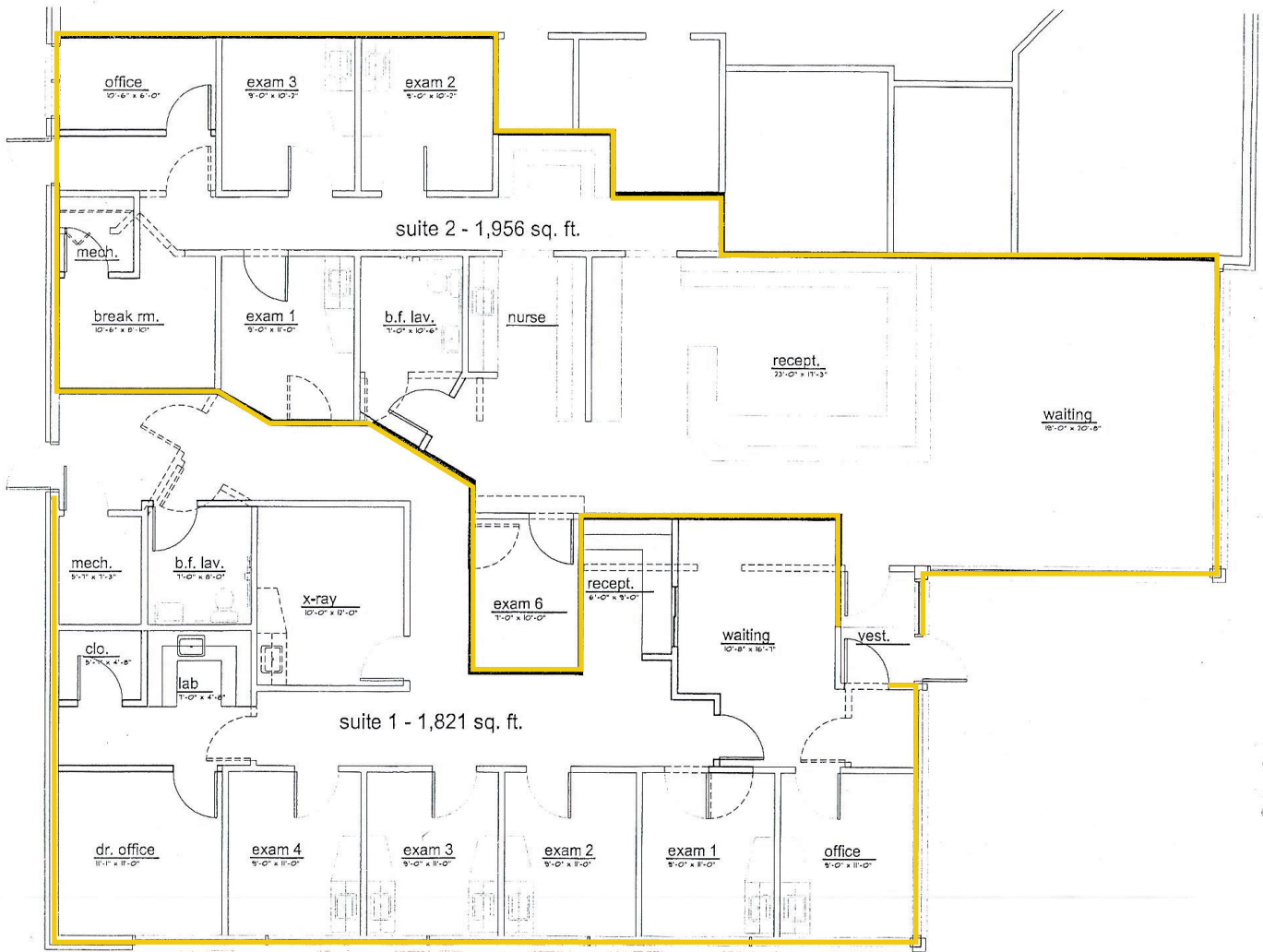
AGENT CONTACT INFO

ANTHONY RUBINO O: 586.254.0900 x101 • C: 586.873.5419 • anthony@pilotpg.com

Matching the right people to the right place.

*Offices in Sterling Heights and Port Huron to serve you
 586.254.0900 • www.pilotpg.com*

FLOOR PLAN



Matching the right people to the right place.

Offices in Sterling Heights and Port Huron to serve you
586.254.0900 • www.pilotpg.com

ADDITIONAL PHOTOS



Matching the right people to the right place.

Offices in Sterling Heights and Port Huron to serve you
586.254.0900 • www.pilotpg.com