

5300 AUTO CLUB DRIVE
DEARBORN, MICHIGAN

OFFICE FOR SALE OR LEASE
22,000 - 88,252 Square Feet Available



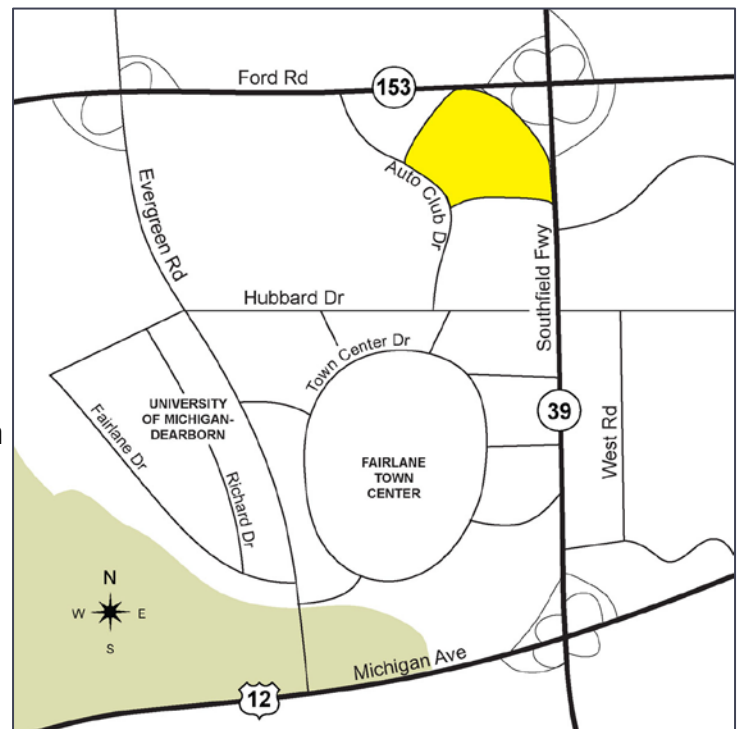
**SIGNATURE
ASSOCIATES**
KNOW SIGNATURE | KNOW RESULTS

PREMIER OFFICE / R&D CAMPUS



PROPERTY FEATURES

- 20,000-88,252 square feet available
- Part of a unique 3-building campus, all connected with a total available of 449,000 square feet
- Prominent visibility in the hub of Dearborn
- 4-story Class A building
- Access to large auditorium, storage and showroom areas
- Attractively priced to sell
- Very competitive lease opportunity
- Sale price is negotiable



For more information, please contact:

JUSTIN GAFFREY
(248) 799 3143
jgaffrey@signatureassociates.com

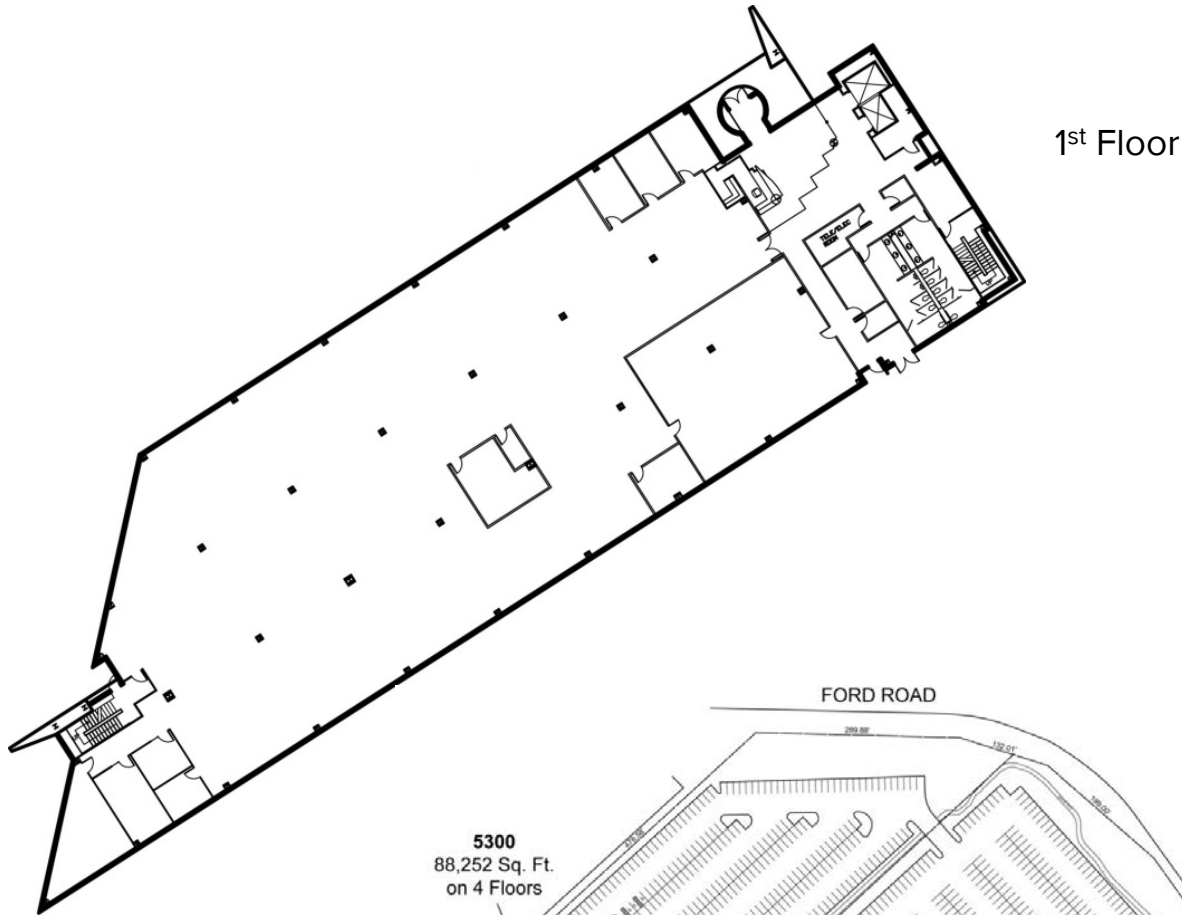
CHRIS SECONTINE
(248) 799 3174
csecontine@signatureassociates.com

SIGNATURE ASSOCIATES
One Towne Square, Suite 1200
Southfield, MI 48076
www.signatureassociates.com

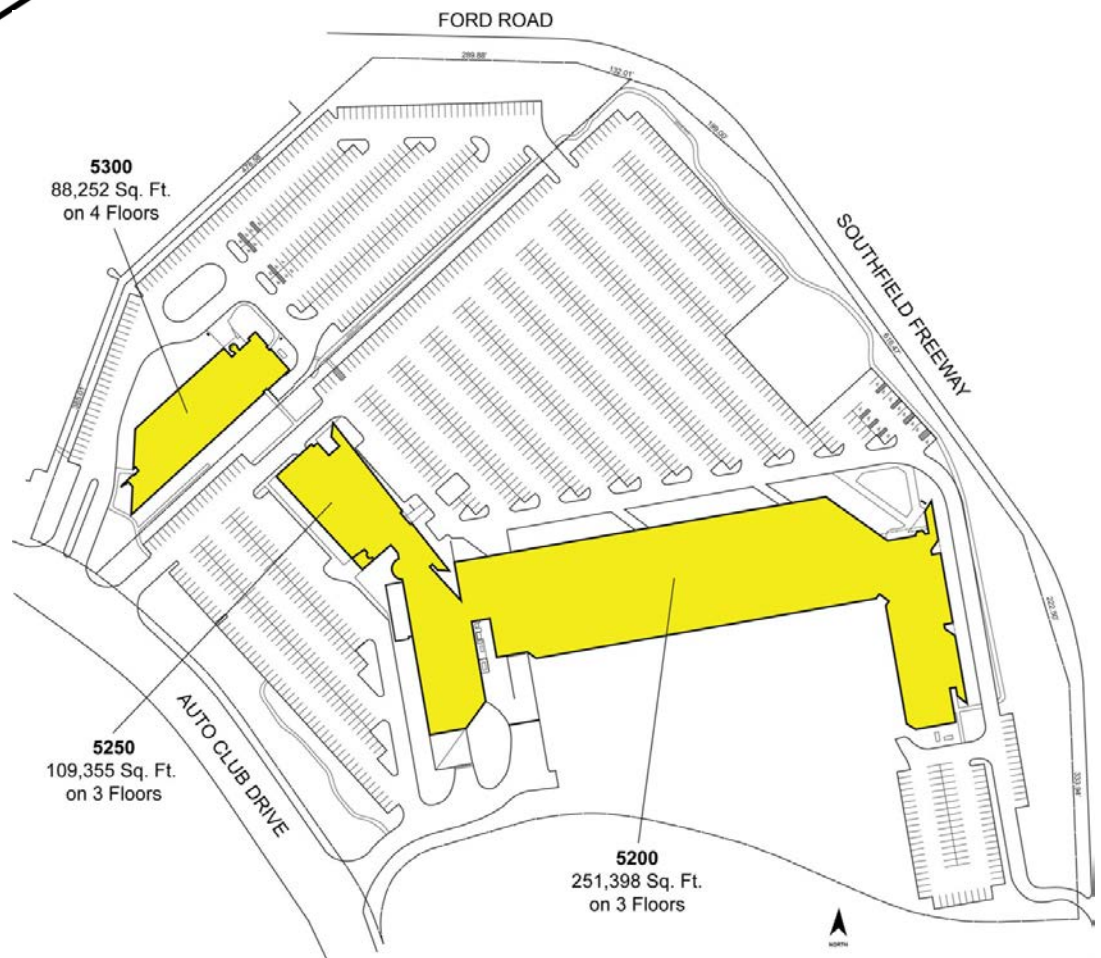
5300 Auto Club Drive – Dearborn, Michigan

Office For Sale or Lease

22,000 - 88,252
Square Feet
AVAILABLE



Site Plan



For more information, please contact:

JUSTIN GAFFREY
(248) 799 3143
jgaffrey@signatureassociates.com

CHRIS SECONTINE
(248) 799 3174
csecontine@signatureassociates.com

SIGNATURE ASSOCIATES
One Towne Square, Suite 1200
Southfield, MI 48076
www.signatureassociates.com