



22.52 ACRES AVAILABLE

DTE SUBSTATION

NORTHVILLE  
LUMBER CO.  
SINCE 1927

Napier Rd

Five Mile Rd

**BUILD-TO-SUIT SALE OR LEASE**  
40,000 - 300,000 Square Feet  
22.52 Acre Development

**FIVE MILE ROAD & NAPIER ROAD**

**NORTHVILLE, MI**

For more information, contact:

**STEVE GORDON**

(248) 948 0101

[sgordon@signatureassociates.com](mailto:sgordon@signatureassociates.com)

**DRAKE FILIPPIS**

(248) 799 3161

[dfilippis@signatureassociates.com](mailto:dfilippis@signatureassociates.com)



**SIGNATURE  
ASSOCIATES**  
KNOW SIGNATURE | KNOW RESULTS





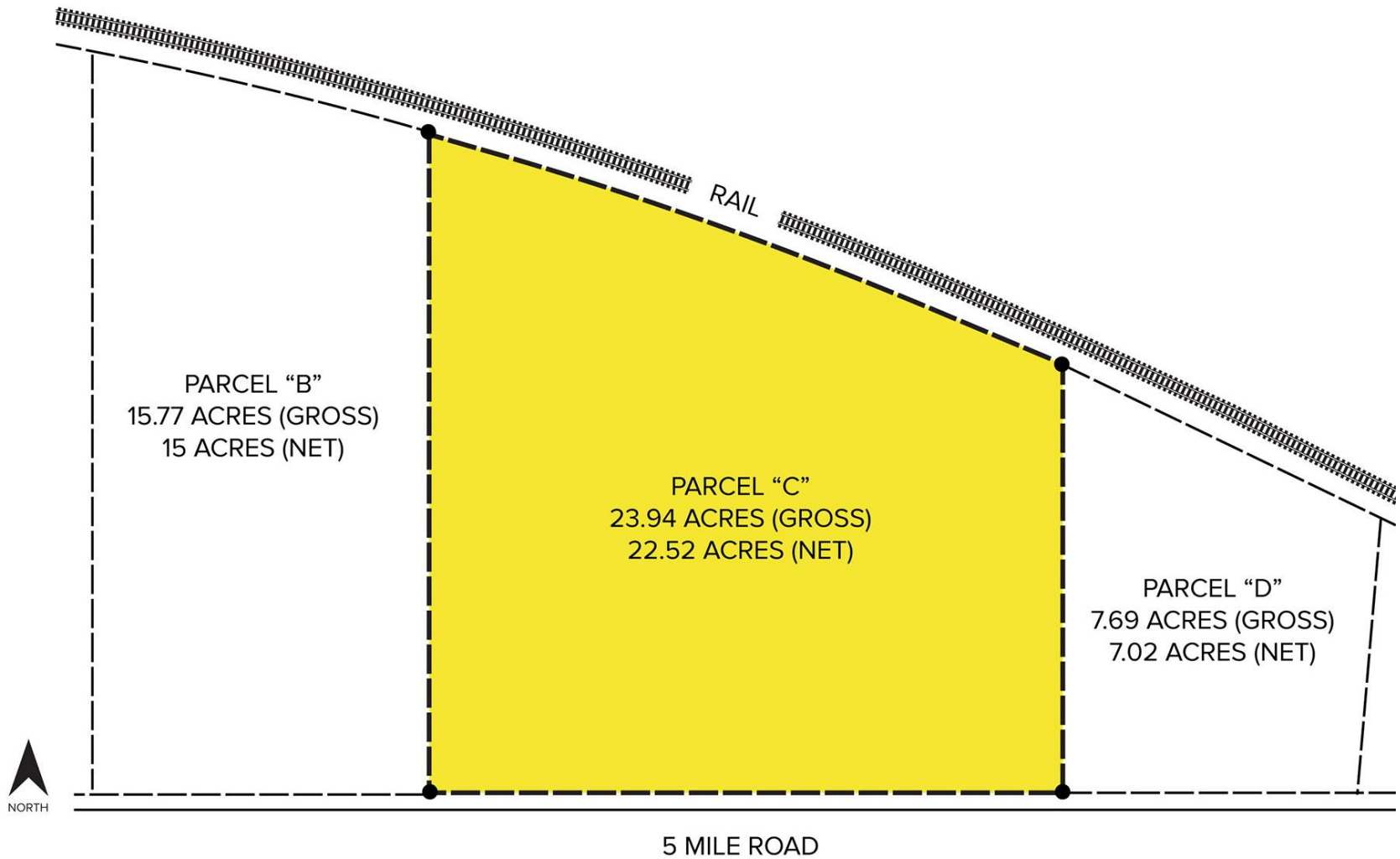
# PROPERTY SUMMARY

## PROPERTY OVERVIEW

- 22.52 Acres available
- 40,000 – 300,000 Sq. Ft. available
- Build-to-Suit For Sale or Lease
- Zoned IND, General Industrial, Industrial Outdoor Storage
- Manufacturing, Distribution or R&D
- 60 MW DTE Nitro substation
- Outdoor storage available
- Five Mile Road improvement project complete
- Located in the Michigan International Technology Center Corridor (MITC), a collaborative EDC initiative of local, county and state entities
- Join Northville Lumber and Verita Telecommunications Corporate Headquarters



# OVERALL SITE PLAN

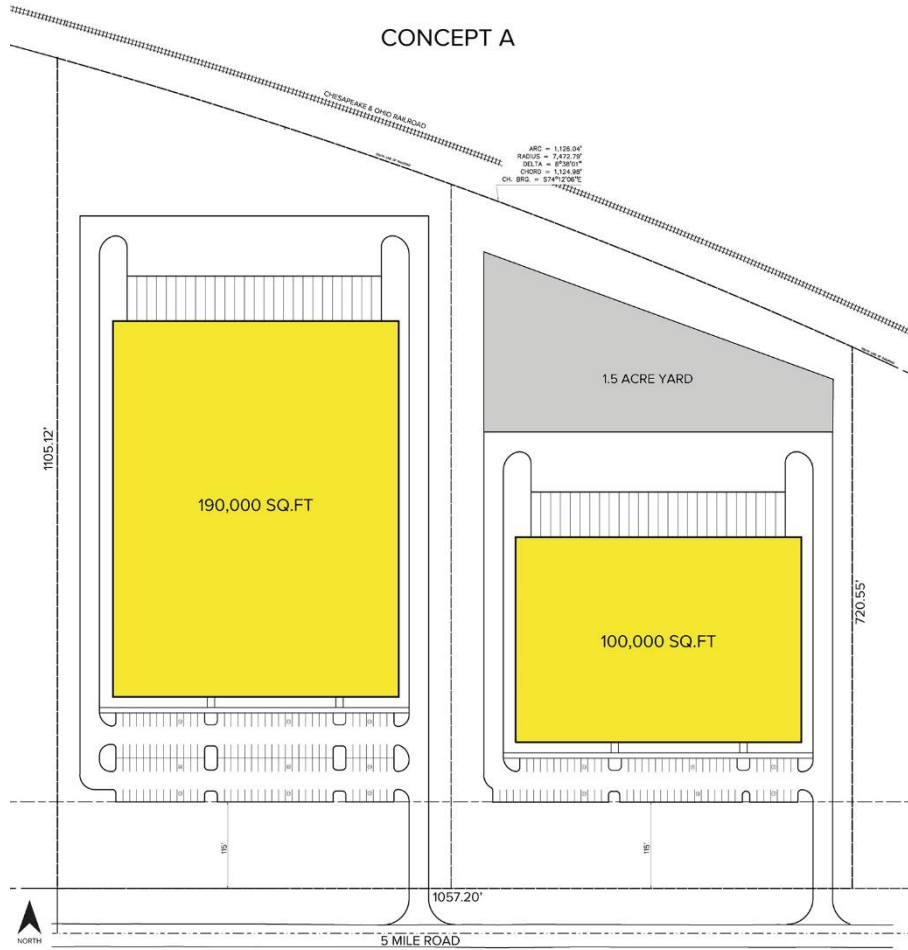




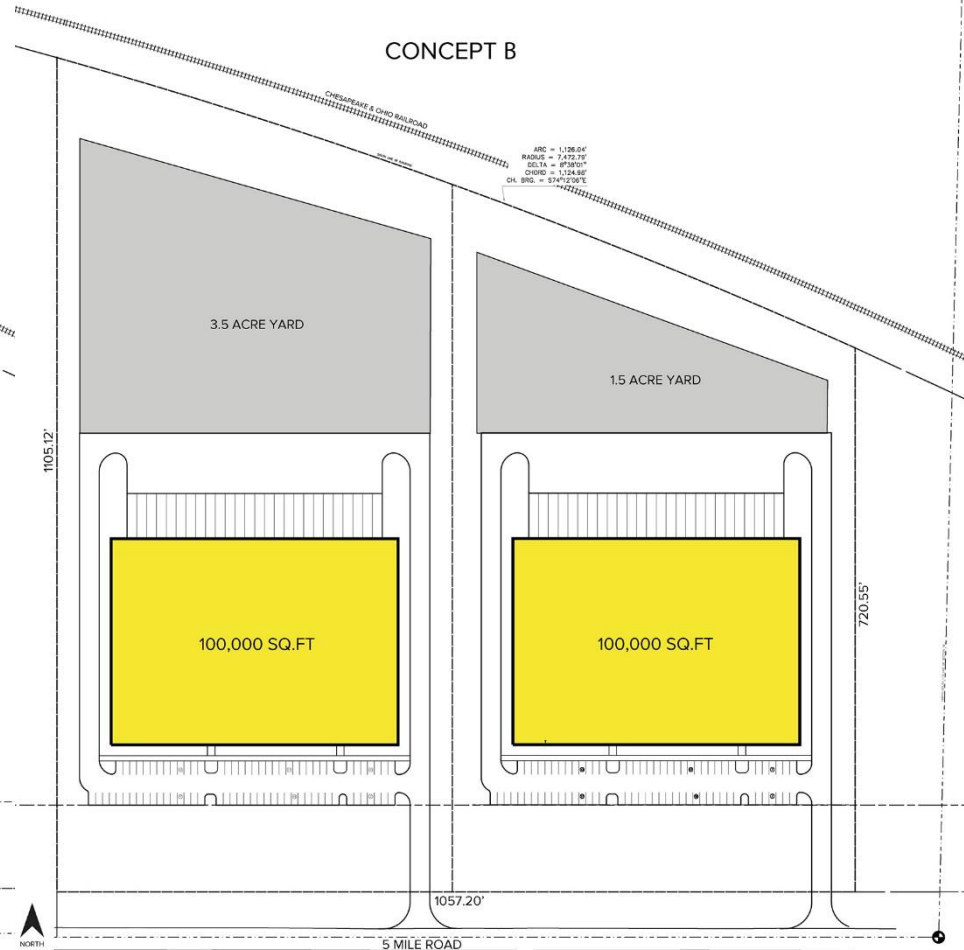


# CONCEPT PLANS

CONCEPT A



CONCEPT B







# SITE OUTLINE



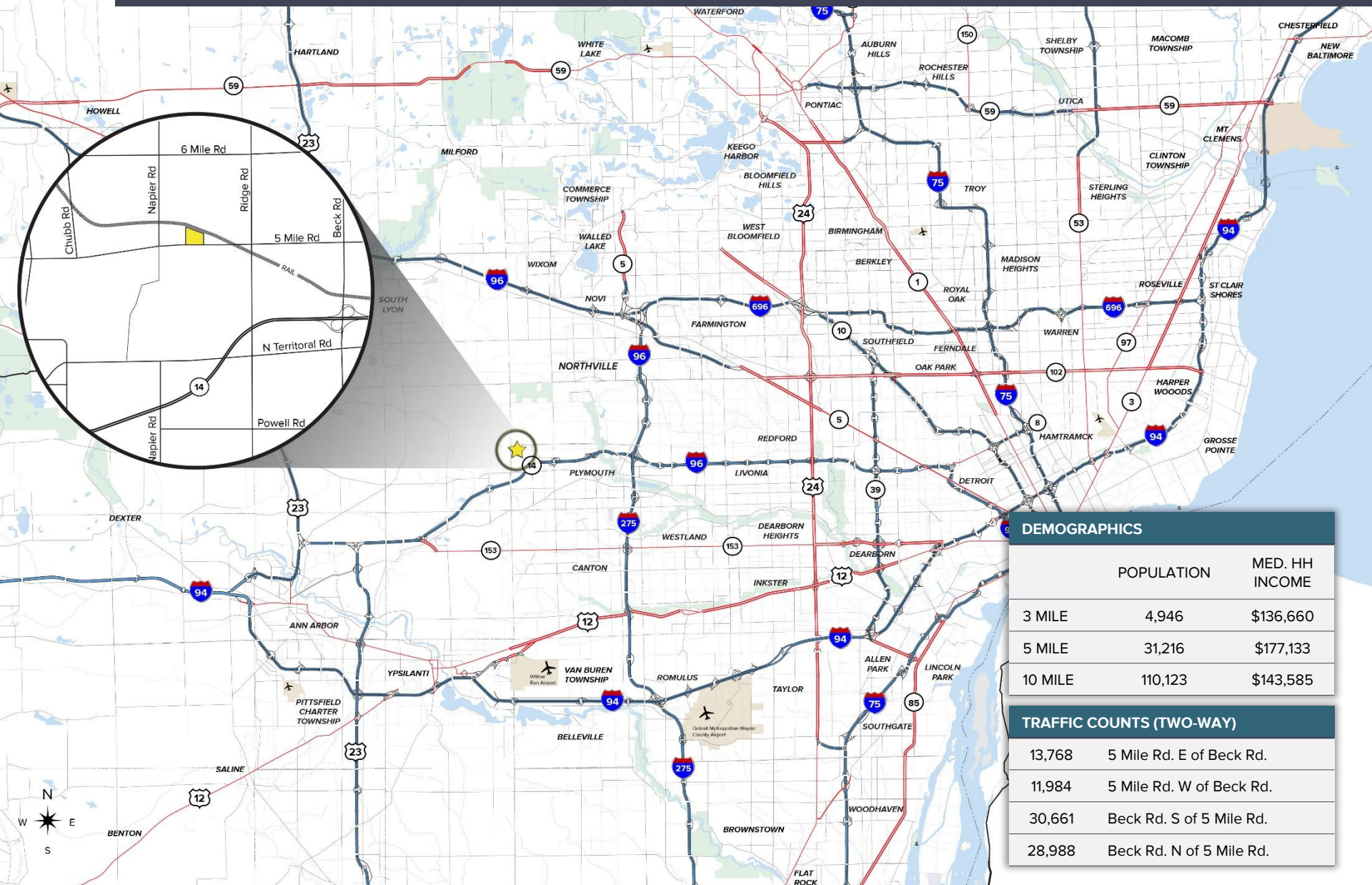








# AREA MAP



DEMOGRAPHICS		
	POPULATION	MED. HH INCOME
3 MILE	4,946	\$136,660
5 MILE	31,216	\$177,133
10 MILE	110,123	\$143,585

TRAFFIC COUNTS (TWO-WAY)		
13,768	5 Mile Rd. E of Beck Rd.	
11,984	5 Mile Rd. W of Beck Rd.	
30,661	Beck Rd. S of 5 Mile Rd.	
28,988	Beck Rd. N of 5 Mile Rd.	



For more information, contact:

**STEVE GORDON**

(248) 948 0101

[sgordon@signatureassociates.com](mailto:sgordon@signatureassociates.com)

**DRAKE FILIPPIS**

(248) 799 3161

[dfilippis@signatureassociates.com](mailto:dfilippis@signatureassociates.com)

BROKERAGE SERVICES

TENANT REPRESENTATION

INVESTMENT SALES

BUSINESS SALES

VALUATION

ADVISORY SERVICES

PROPERTY/ASSET MANAGEMENT

CONSULTING

MARKET RESEARCH

MARKETING

**SIGNATURE ASSOCIATES**

One Towne Square, Suite 1200

Southfield, Michigan 48076

(248) 948 9000

[www.signatureassociates.com](http://www.signatureassociates.com)