

18201 JOY ROAD
DETROIT, MICHIGAN

RETAIL FOR SALE
2,156 Square Feet Available

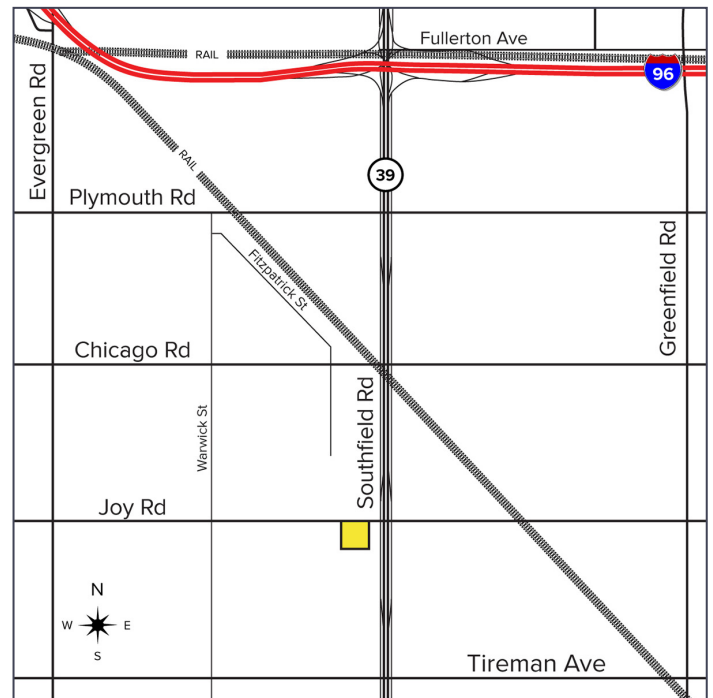


**SIGNATURE
ASSOCIATES**
KNOW SIGNATURE | KNOW RESULTS



PROPERTY FEATURES

- 2,156 square feet available
- Multi-tenant retail building
- Zoned B4
- Street parking
- Available immediately
- Sale Price: \$195,000 (\$90.45/sq. ft.)



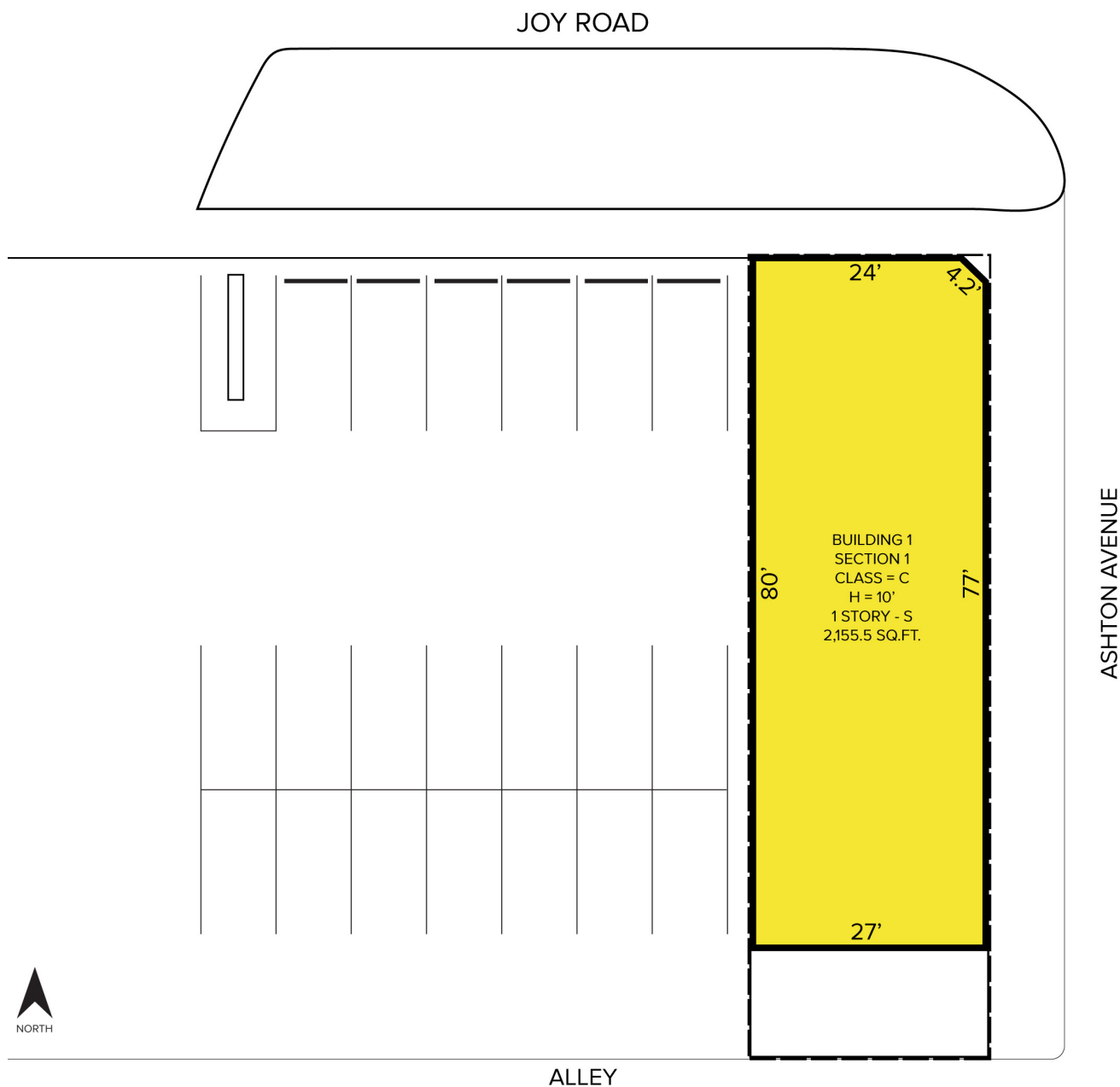
For more information, please contact:

JOE STACK
(248) 359 0615
jstack@signatureassociates.com

MARVIN PETROUS
(248) 359 0647
mpetrous@signatureassociates.com

SIGNATURE ASSOCIATES
One Towne Square, Suite 1200
Southfield, MI 48076
www.signatureassociates.com

Site Plan



For more information, please contact:

JOE STACK
(248) 359 0615
jstack@signatureassociates.com

MARVIN PETROUS
(248) 359 0647
mpetrous@signatureassociates.com

SIGNATURE ASSOCIATES
One Towne Square, Suite 1200
Southfield, MI 48076
www.signatureassociates.com

18201 Joy Road – Detroit, Michigan

Retail For Sale

2,156
Square Feet
AVAILABLE

DEMOGRAPHICS

	POPULATION	MED. HH INCOME
1 MILE	19,619	\$34,740
3 MILE	153,561	\$44,454
5 MILE	381,288	\$50,817

TRAFFIC COUNTS (TWO-WAY)

12,645	Joy Rd. E. of M-39
13,098	Joy Rd. W. of M-39
68,994	M-39 N. of Joy Rd.
70,781	M-39 S. of Joy Rd.



For more information, please contact:

JOE STACK
(248) 359 0615
jstack@signatureassociates.com

MARVIN PETROUS
(248) 359 0647
mpetrous@signatureassociates.com

SIGNATURE ASSOCIATES
One Towne Square, Suite 1200
Southfield, MI 48076
www.signatureassociates.com