

25402 JOHN R. ROAD
MADISON HEIGHTS, MICHIGAN



**SIGNATURE
ASSOCIATES**
KNOW SIGNATURE | KNOW RESULTS

RETAIL FOR SALE
3,360 Square Feet Available



PROPERTY FEATURES

- 3,360 square feet available
- Many potential uses
- City parking in rear
- High traffic counts, located on well traveled John R. Road
- Sale Price: \$295,000 (\$87.80/sq. ft.)



For more information, please contact:

JOE STACK
(248) 359 0615
jstack@signatureassociates.com

KRIS PAWLOWSKI
(248) 359 3801
kpawlowski@signatureassociates.com

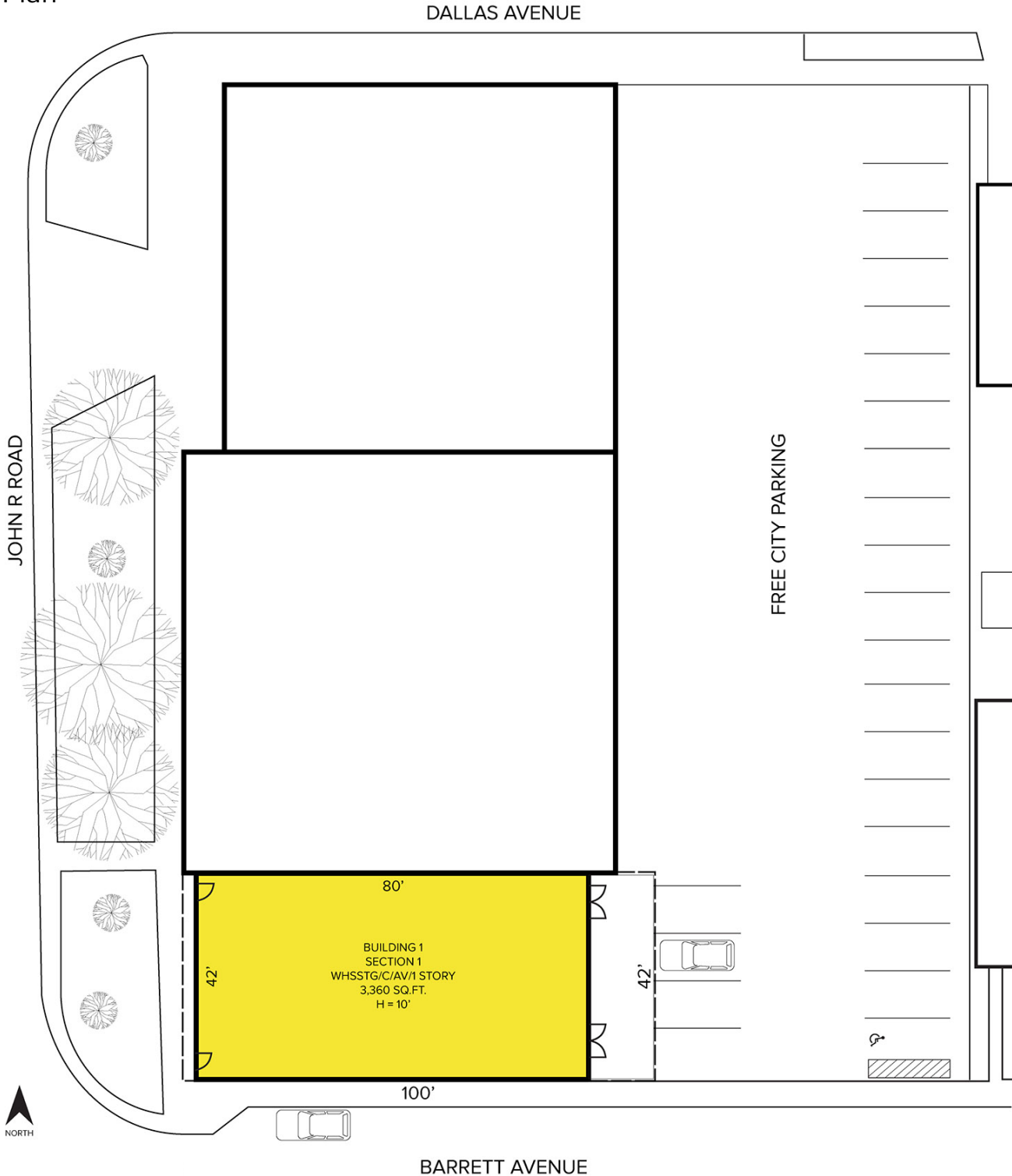
SIGNATURE ASSOCIATES
One Towne Square, Suite 1200
Southfield, MI 48076
www.signatureassociates.com

25402 John R. Road – Madison Heights, Michigan

Retail For Sale

3,360
Square Feet
AVAILABLE

Site Plan



For more information, please contact:

JOE STACK
(248) 359 0615
jstack@signatureassociates.com

KRIS PAWLOWSKI
(248) 359 3801
kpawlowski@signatureassociates.com

SIGNATURE ASSOCIATES
One Towne Square, Suite 1200
Southfield, MI 48076
www.signatureassociates.com

25402 John R. Road – Madison Heights, Michigan

Retail For Sale

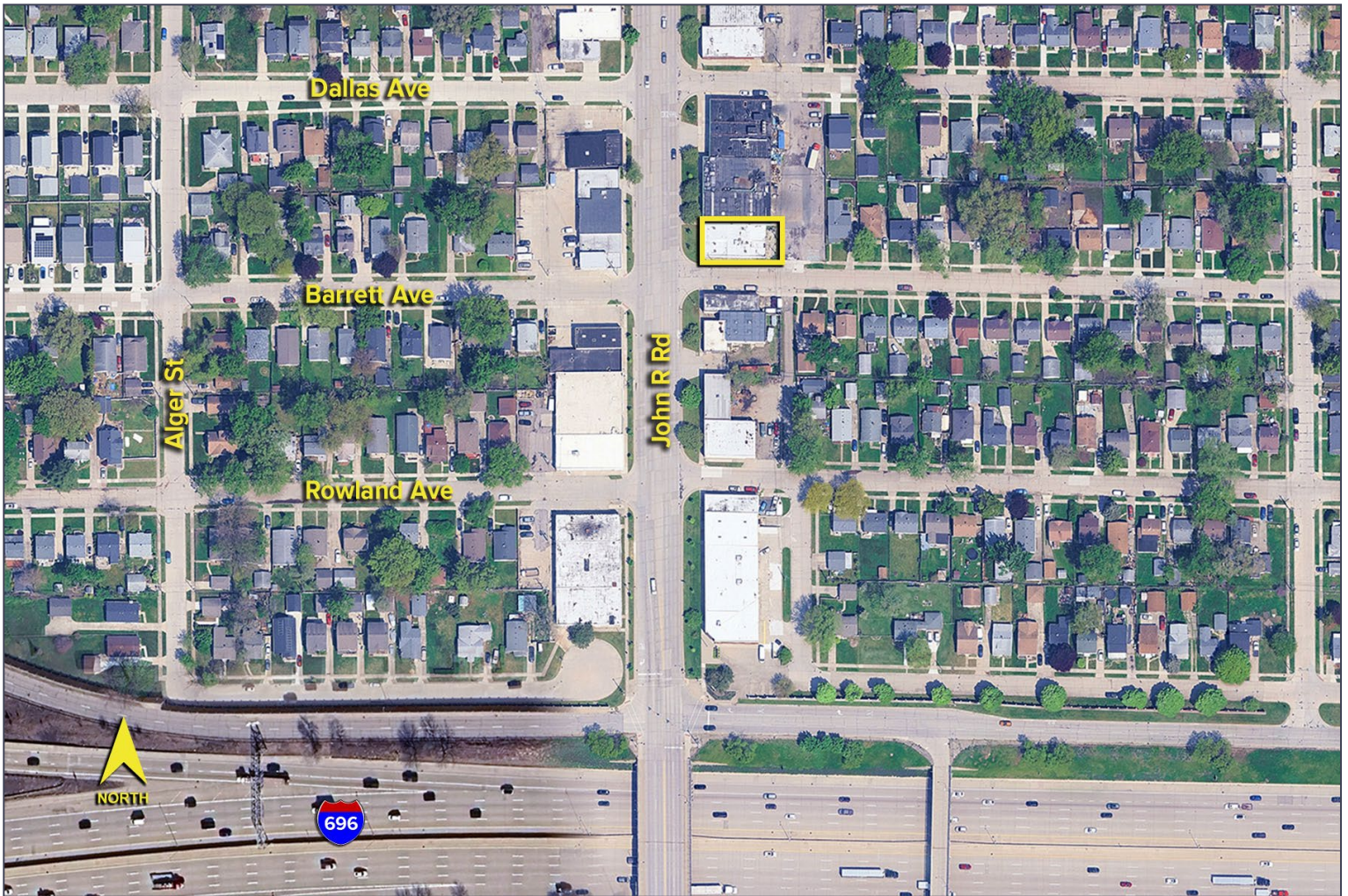
3,360
Square Feet
AVAILABLE

DEMOGRAPHICS

	POPULATION	MED. HH INCOME
1 MILE	16,286	\$74,454
3 MILE	138,554	\$82,846
5 MILE	360,015	\$75,765

TRAFFIC COUNTS (TWO-WAY)

30,724	John R. Rd. N of I-696
30,150	John R. Rd. S of I-696
161,317	I-696 W of John R. Rd.
132,750	I-696 E of John R. Rd.



For more information, please contact:

JOE STACK
(248) 359 0615
jstack@signatureassociates.com

KRIS PAWLOWSKI
(248) 359 3801
kpawlowski@signatureassociates.com

SIGNATURE ASSOCIATES
One Towne Square, Suite 1200
Southfield, MI 48076
www.signatureassociates.com