

2655 OAKLEY PARK ROAD
COMMERCE TWP., MICHIGAN

OFFICE FOR SALE OR LEASE

For Sale: 28,403 Square Feet

For Lease: 1,420-7,504 Square Feet



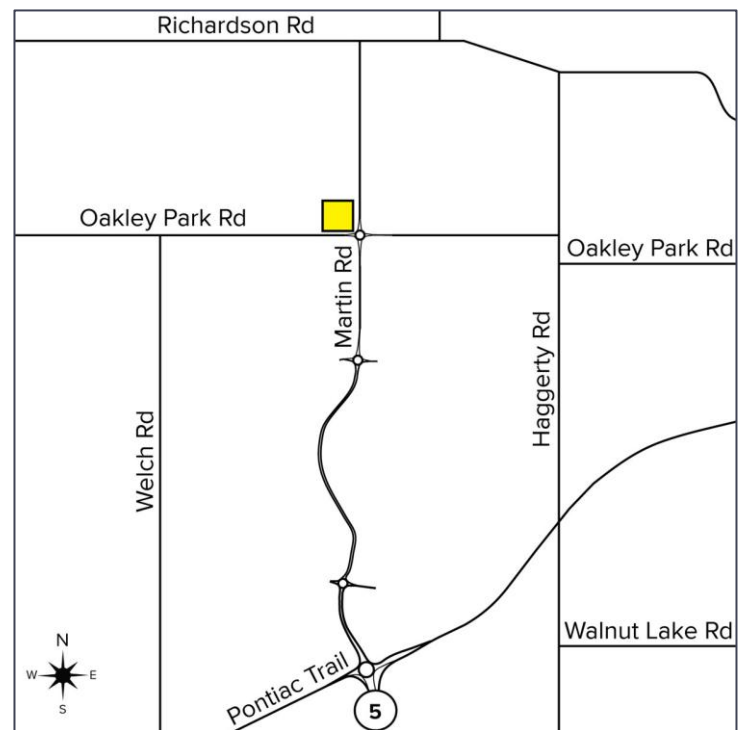
**SIGNATURE
ASSOCIATES**
KNOW SIGNATURE | KNOW RESULTS

COMMERCE CENTER



PROPERTY FEATURES

- 1,420-7,504 square feet available
- 28,403 square foot building for sale
- Impeccable office building with modern design and finishes throughout
- High visibility location
- Ample parking
- Wooded area creates a park-like atmosphere
- A must-see building!
- Contact Broker for Lease Rate
- Sale Price: \$3,295,000 (\$116.01/sq. ft.)



For more information, please contact:

JASON STOUGH

(248) 948 4180

jstough@signatureassociates.com

JEFF LEMANSKI

(248) 359 0641

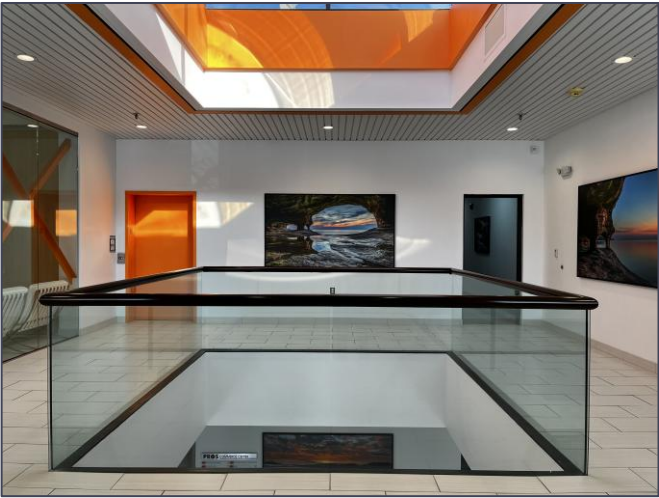
jlemanski@signatureassociates.com

JOHN BOYD

(248) 948 0102

jboyd@signatureassociates.com

Common Area Photos



For more information, please contact:

JASON STOUGH
(248) 948 4180
jstough@signatureassociates.com

JEFF LEMANSKI
(248) 359 0641
jlemanski@signatureassociates.com

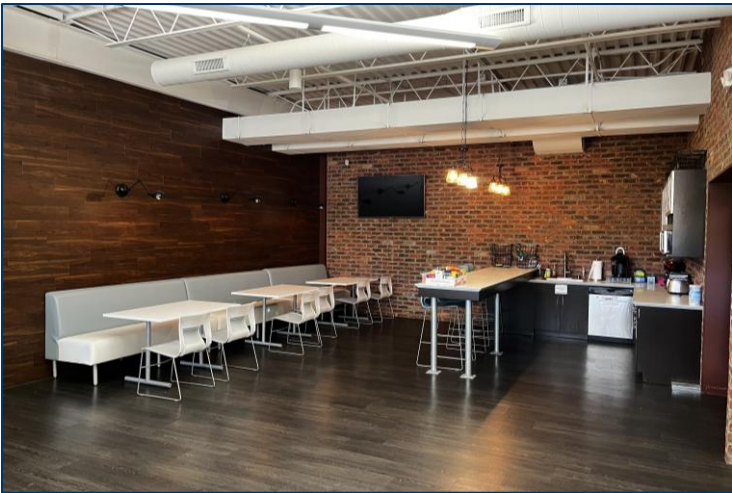
JOHN BOYD
(248) 948 0102
jboyd@signatureassociates.com

2655 Oakley Park Road – Commerce Twp., Michigan

Office For Sale or Lease

1,420 - 7,504
Square Feet
AVAILABLE

Suite 200 Photos



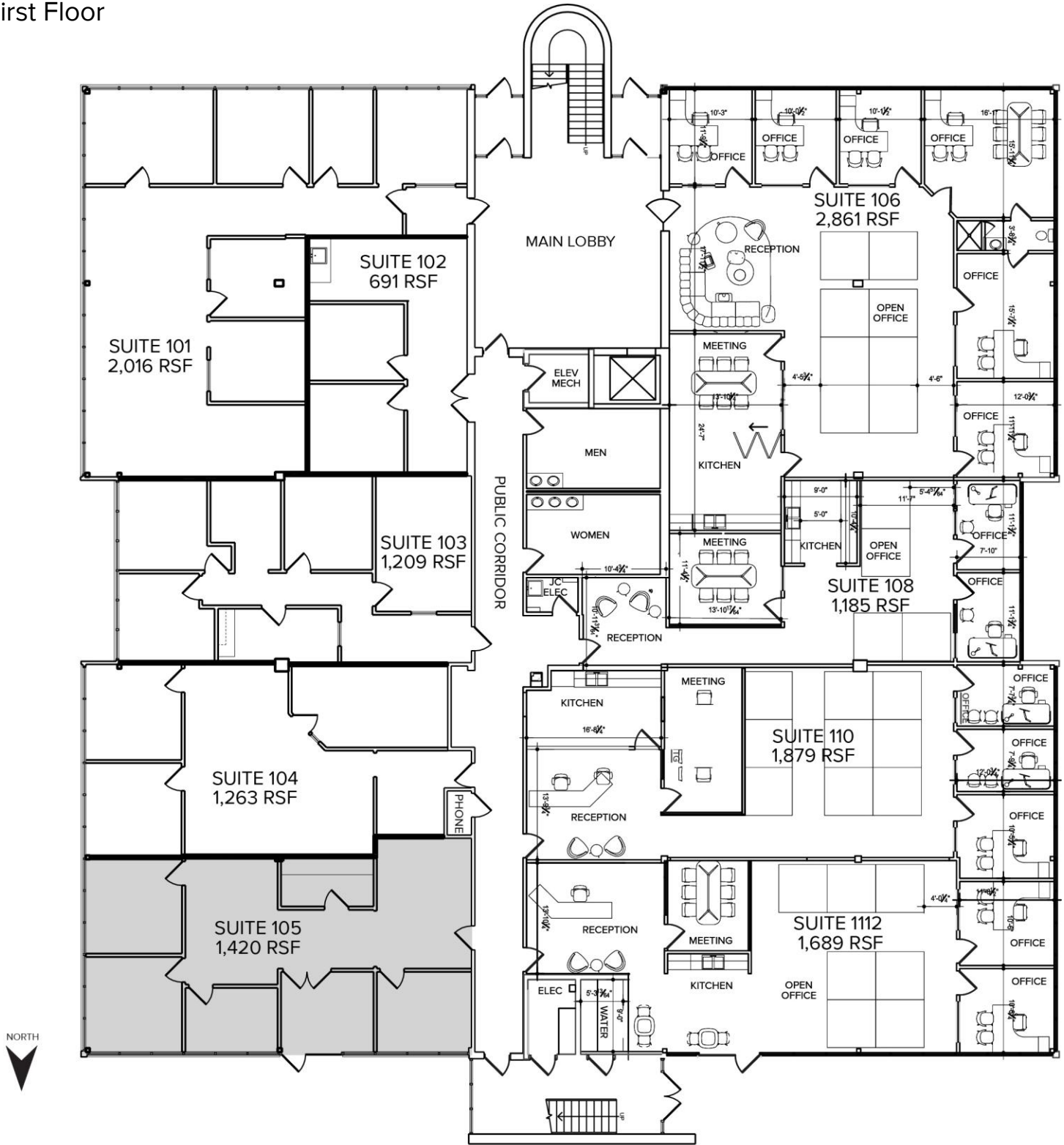
For more information, please contact:

JASON STOUGH
(248) 948 4180
jstough@signatureassociates.com

JEFF LEMANSKI
(248) 359 0641
jlemanski@signatureassociates.com

JOHN BOYD
(248) 948 0102
jboyd@signatureassociates.com

First Floor



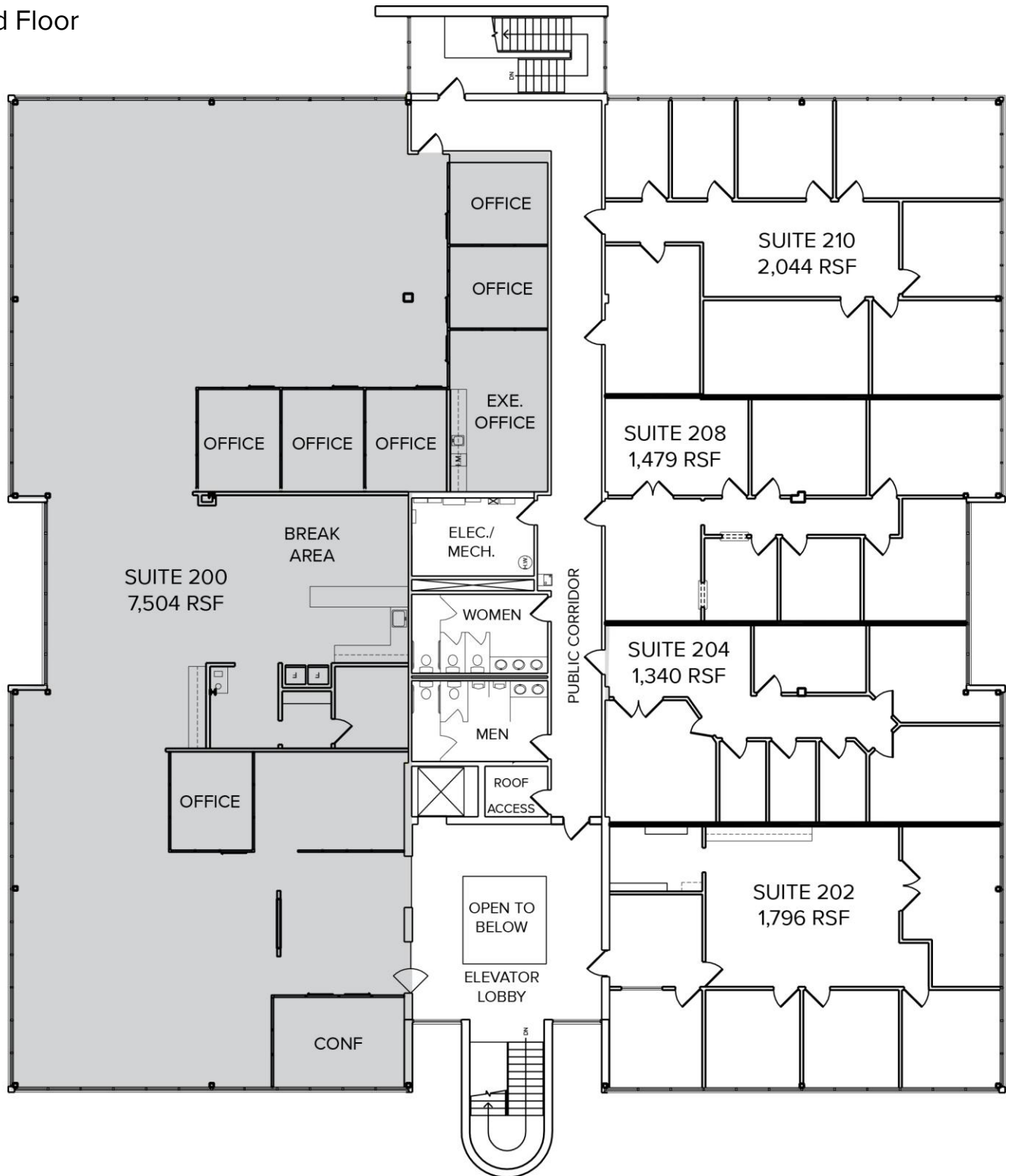
For more information, please contact:

JASON STOUGH
(248) 948 4180
jstough@signatureassociates.com

JEFF LEMANSKI
(248) 359 0641
jlemanski@signatureassociates.com

JOHN BOYD
(248) 948 0102
jboyd@signatureassociates.com

Second Floor



For more information, please contact:

JASON STOUGH
(248) 948 4180
jstough@signatureassociates.com

JEFF LEMANSKI
(248) 359 0641
jlemanski@signatureassociates.com

JOHN BOYD
(248) 948 0102
jboyd@signatureassociates.com