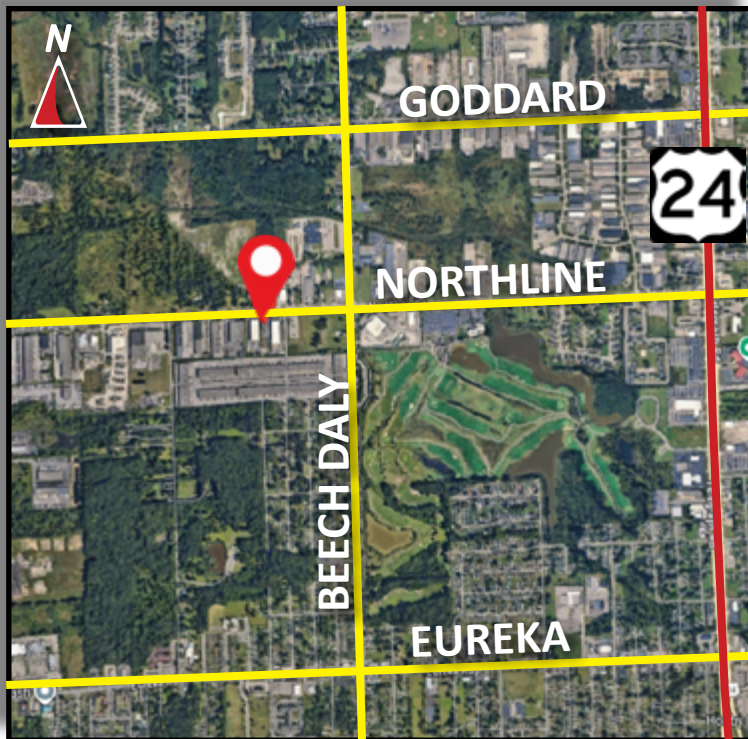


Burger

& COMPANY

FOR LEASE

26187 Northline Road
Taylor, Michigan
10,125 Square Feet



- 10,125 square feet on approx. 1.50 acres for lease
- Northline Road frontage with yard space!
- One (1) 12'x14' grade level door
- One (1) truckwell
- 18' clear height
- LED lighting
- Office renovations to include fresh carpet and paint
- Quick access to I-94, I-275 and Telegraph
- Occupancy Q3/Q4 of 2026
- Gross lease includes real estate taxes and building insurance
- Lease Rate: \$9.50 per square foot / \$8,015.00 per month

Burger & Company

Nicolo Burger, SIOR, CCIM
Vice President
Cell: 810.224.8103
nic@burgercollc.com

Paul Burger, SIOR
President
Cell: 586.202.7800
paul@burgercollc.com

248.536.2888
www.burgercollc.com
38345 W. 10 Mile Road, Suite 100
Farmington Hills, MI 48335

Information contained herein is deemed to be reliable but is not guaranteed and may be withdrawn at any time.

FOR LEASE

26187 Northline Road
Taylor, MI



BUILDING SPECIFICATIONS

Location	Northline & Beech Daly	Total Building Square Feet	10,125 SF
County	Wayne	Office Square Feet	2,000 SF
Zoning	I-1 Light Industrial	Warehouse Square Feet	8,125 SF
Lot Size	1.50 Acres	Year Built	1994

Construction	Brick over Block	Roof	Rubber
Clear Height	18'	Grade Level Doors	One (1) 12'x14'
Cranes	No	Truckwells	One (1)
Lighting	LED/Fluorescent	Power	3 Phase
Heating	Radiant	Sprinklers	No
Warehouse A/C	No	Signage	Yes/main road frontage
Buss Duct	No	Restrooms	Yes
Parking	Ample	Yard Space	Yes

Description

- 10,125 square feet on approx. 1.50 acres for lease
- Northline Road frontage with yard space!
- One (1) 12'x14' grade level door
- One (1) truckwell
- 18' clear height
- LED lighting
- Office renovations to include fresh carpet and paint
- Quick access to I-94, I-275 and Telegraph
- Occupancy Q3/Q4 of 2026
- Gross lease includes real estate taxes and building insurance
- Lease Rate: \$9.50 per square foot / \$8,015.00 per month

Lease Rate	\$9.50 PSF
Monthly	\$8,015.00
Lease Type	Gross
Availability	To be determined

Burger

& COMPANY

Nicolo Burger, SIOR, CCIM
Vice President
Cell: 810.224.8103
nic@burgercollc.com

Paul Burger, SIOR
President
Cell: 586.202.7800
paul@burgercollc.com

248.536.2888
www.burgercollc.com
38345 W. 10 Mile Road, Suite 100
Farmington Hills, MI 48335

Information contained herein is deemed to be reliable but is not guaranteed and may be withdrawn at any time.

FOR LEASE

26187 Northline Road
Taylor, MI

YARD SPACE



Burger

& COMPANY

Nicolo Burger, SIOR, CCIM
Vice President
Cell: 810.224.8103
nic@burgercollc.com

Paul Burger, SIOR
President
Cell: 586.202.7800
paul@burgercollc.com

248.536.2888
www.burgercollc.com
38345 W. 10 Mile Road, Suite 100
Farmington Hills, MI 48335

Information contained herein is deemed to be reliable but is not guaranteed and may be withdrawn at any time.

FOR LEASE

26187 Northline Road
Taylor, MI

EXTERIOR PICTURE



Burger

& COMPANY

Nicolo Burger, SIOR, CCIM
Vice President
Cell: 810.224.8103
nic@burgercollc.com

Paul Burger, SIOR
President
Cell: 586.202.7800
paul@burgercollc.com

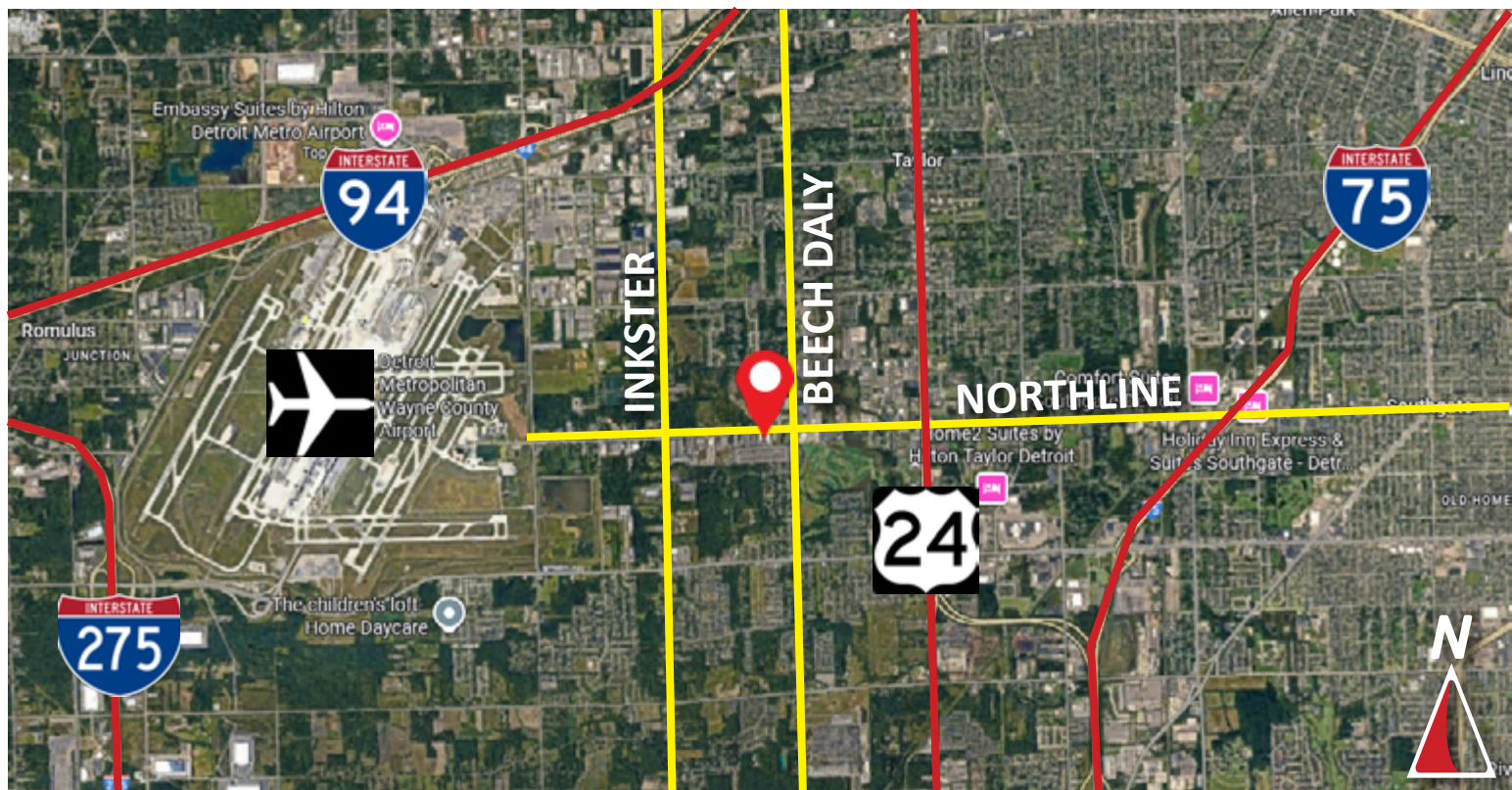
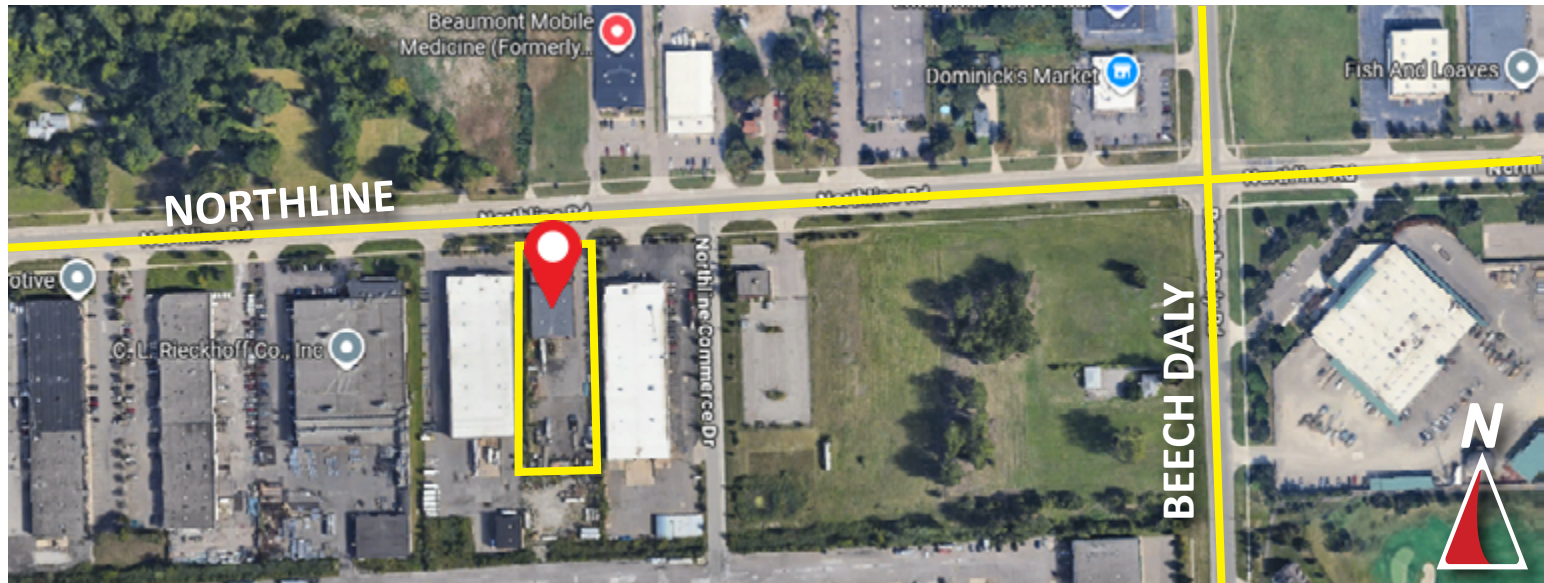
248.536.2888
www.burgercollc.com
38345 W. 10 Mile Road, Suite 100
Farmington Hills, MI 48335

Information contained herein is deemed to be reliable but is
not guaranteed and may be withdrawn at any time.

FOR LEASE

26187 Northline Road
Taylor, MI

AERIAL VIEW



Burger

& COMPANY

Nicolo Burger, SIOR, CCIM
Vice President
Cell: 810.224.8103
nic@burgercollc.com

Paul Burger, SIOR
President
Cell: 586.202.7800
paul@burgercollc.com

248.536.2888
www.burgercollc.com
38345 W. 10 Mile Road, Suite 100
Farmington Hills, MI 48335

Information contained herein is deemed to be reliable but is not guaranteed and may be withdrawn at any time.