

3915 RESEARCH PARK DRIVE
ANN ARBOR, MICHIGAN

HI-TECH / R&D / OFFICE FOR LEASE
5,121 Square Feet Available



**SIGNATURE
ASSOCIATES**
KNOW SIGNATURE | KNOW RESULTS

INTECH BUSINESS PARK



PROPERTY FEATURES

- **Available Units** **A-9**
- Office Space 3,704 sq. ft.
- Hi-Bay Space 1,417 sq. ft.
- Total 5,121 sq. ft.
- Flex suites with office/shop/lab combo areas
- 13' clear height
- Each unit has a private suite entrance and access to hi-bay area by 1-2 grade level over head doors
- Zoned Research
- Beautiful corporate campus setting with on-site ample parking
- Easy access to I-94 expressway via State Street interchange
- A-9 Immediately Available
- Reduced Lease Rate: \$10.25/sq. ft. NNN
- 2026 operating expense budget is \$6.04/sq. ft.



For more information, please contact:

JAY CHAVEY
(248) 948 4196
jchavey@signatureassociates.com

DRAKE FILIPPIS
(248) 799 3161
dfilippis@signatureassociates.com

SIGNATURE ASSOCIATES
One Towne Square, Suite 1200
Southfield, MI 48076
www.signatureassociates.com

3915 Research Park Drive – Ann Arbor, Michigan

Hi-Tech / R&D / Office For Lease

5,121
Square Feet
AVAILABLE

Site Plan

LEASED
3917 RESEARCH PARK DRIVE B-7
3,654 SQ.FT.

VACANT
3917 RESEARCH PARK DRIVE B-4
5,348 SQ.FT.

LEASED
3917 RESEARCH PARK DRIVE B-1
7,300 SQ.FT.

LEASED
3915 RESEARCH PARK DRIVE A-12
2,239 SQ.FT.

LEASED
3915 RESEARCH PARK DRIVE A-10
6,128 SQ.FT.

VACANT
3915 RESEARCH PARK DRIVE A-9
5,121 SQ.FT.

LEASED
3915 RESEARCH PARK DRIVE A-8
5,168 SQ.FT.

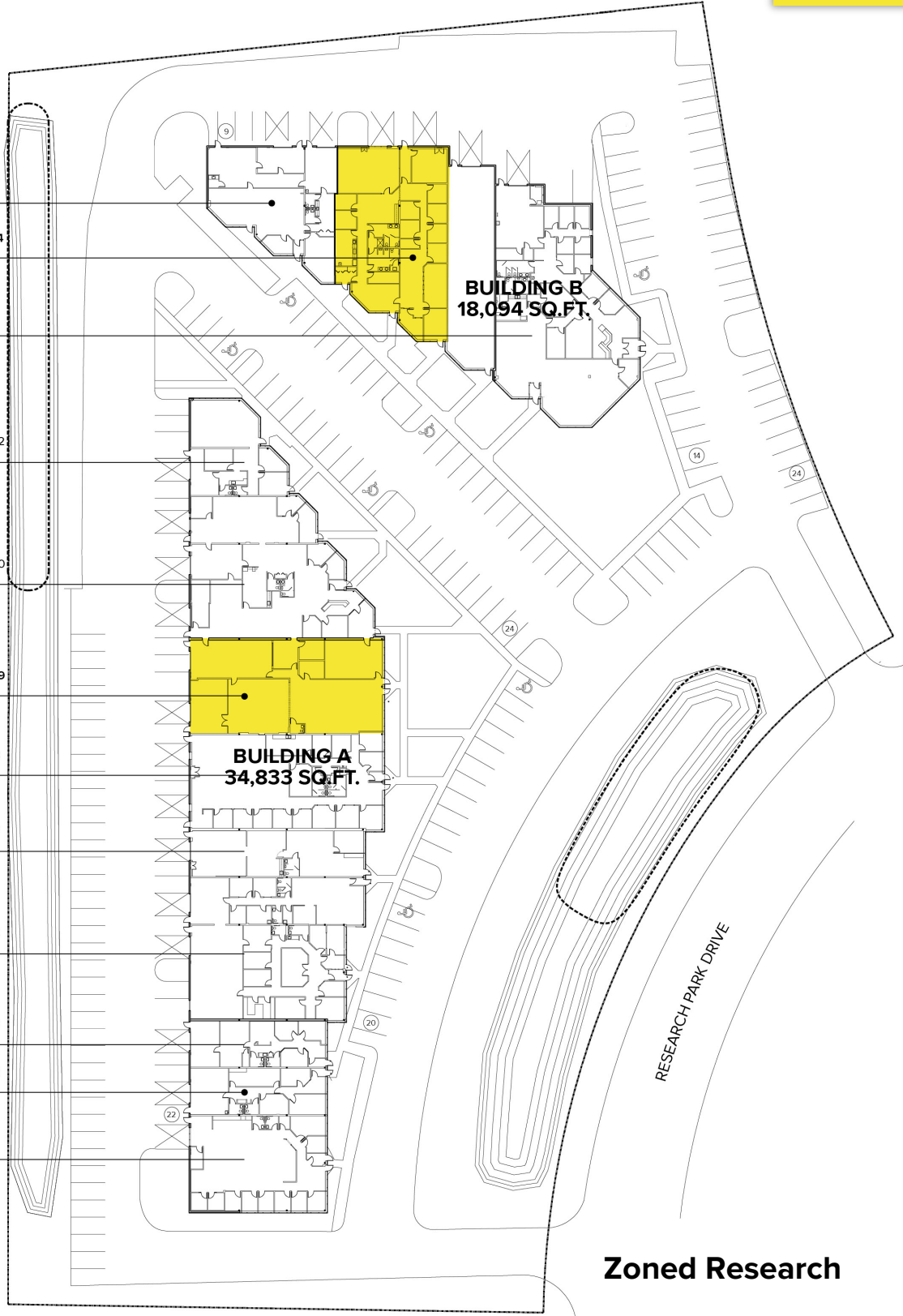
LEASED
3915 RESEARCH PARK DRIVE A-7
2,318 SQ.FT.

LEASED
3915 RESEARCH PARK DRIVE A-4
6,495 SQ.FT.

LEASED
3915 RESEARCH PARK DRIVE A-3
1,820 SQ.FT.

LEASED
3915 RESEARCH PARK DRIVE A-2
1,817 SQ.FT.

LEASED
3915 RESEARCH PARK DRIVE A-1
3,738 SQ.FT.



For more information, please contact:

JAY CHAVEY
(248) 948 4196

jchavey@signatureassociates.com

DRAKE FILIPPIS
(248) 799 3161

dfilippis@signatureassociates.com

SIGNATURE ASSOCIATES
One Towne Square, Suite 1200
Southfield, MI 48076
www.signatureassociates.com

3915 Research Park Drive – Ann Arbor, Michigan

Hi-Tech / R&D / Office For Lease

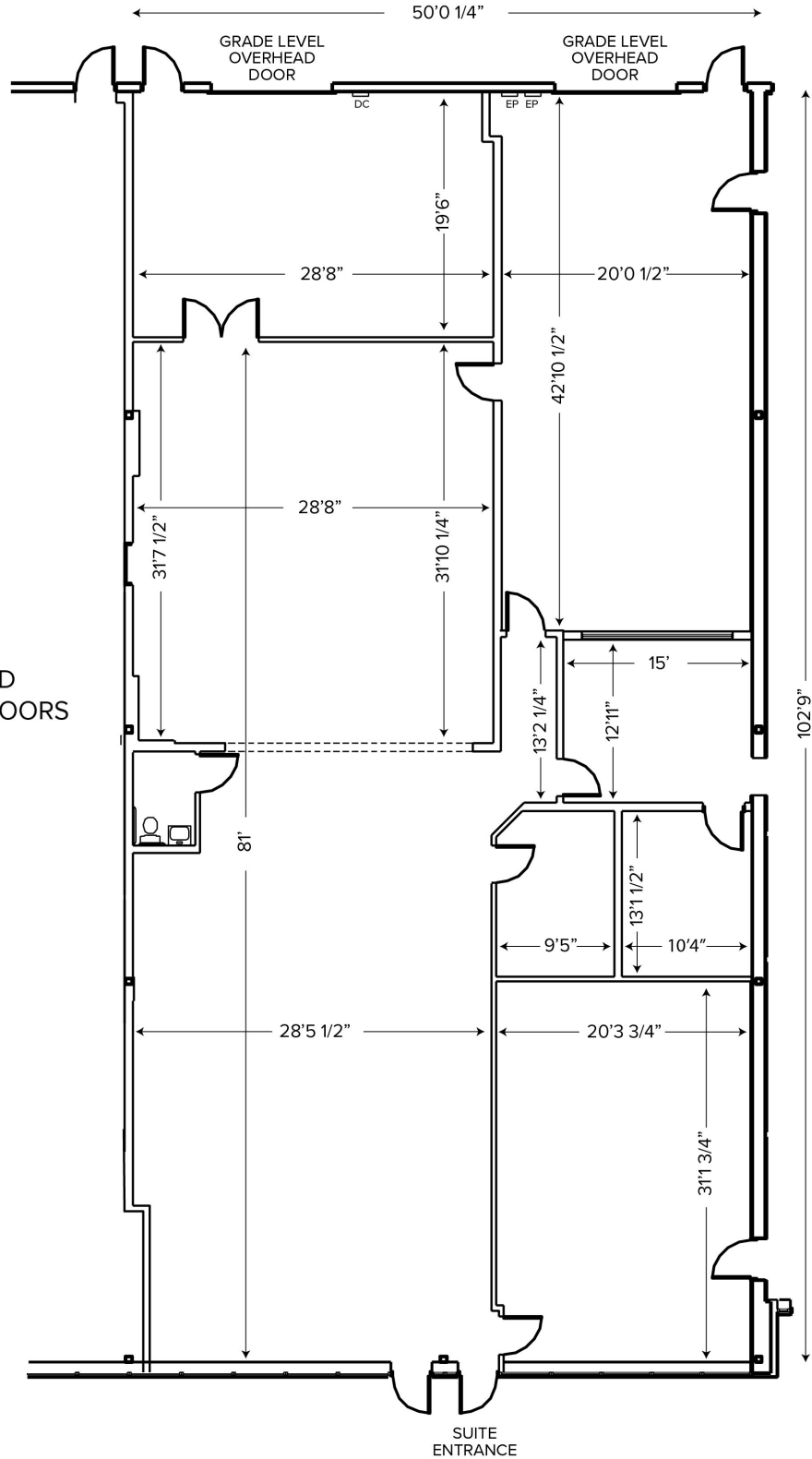
5,121
Square Feet
AVAILABLE

Floor Plan Unit A-9

OFFICE: 3,616 SQ.FT.
HI-BAY: 1,505 SQ.FT.

TOTAL: 5,121 SQ.FT.

100% HEATED & AIR CONDITIONED
2 ACTIVE GRADE LEVEL OVERHEAD DOORS



For more information, please contact:

JAY CHAVEY
(248) 948 4196
jchavey@signatureassociates.com

DRAKE FILIPPIS
(248) 799 3161
dfilippis@signatureassociates.com

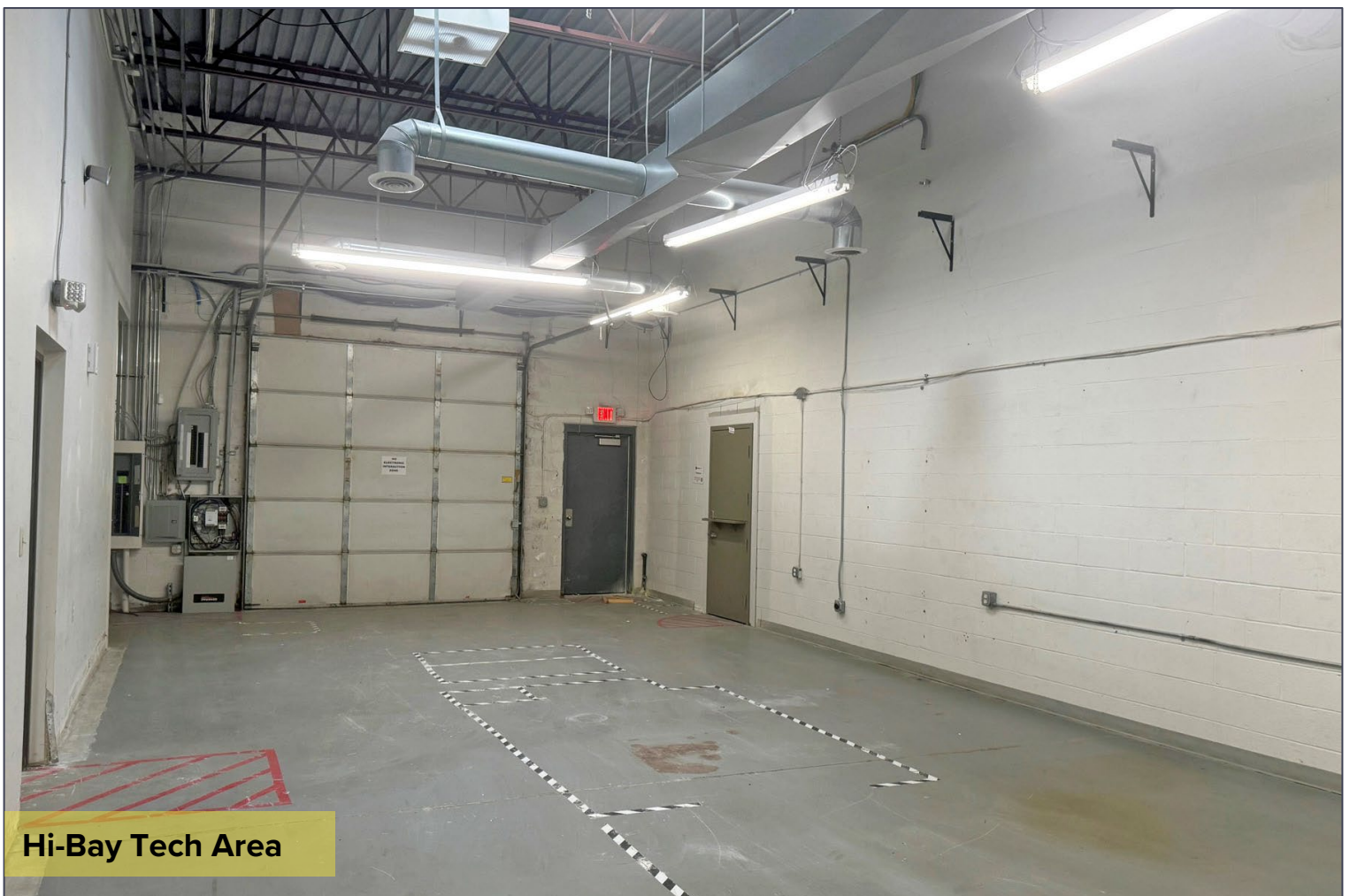
SIGNATURE ASSOCIATES
One Towne Square, Suite 1200
Southfield, MI 48076
www.signatureassociates.com

3915 Research Park Drive – Ann Arbor, Michigan

Hi-Tech / R&D / Office For Lease

5,121
Square Feet
AVAILABLE

Interior Photos Unit A-9



For more information, please contact:

JAY CHAVEY
(248) 948 4196
jchavey@signatureassociates.com

DRAKE FILIPPIS
(248) 799 3161
dfilippis@signatureassociates.com

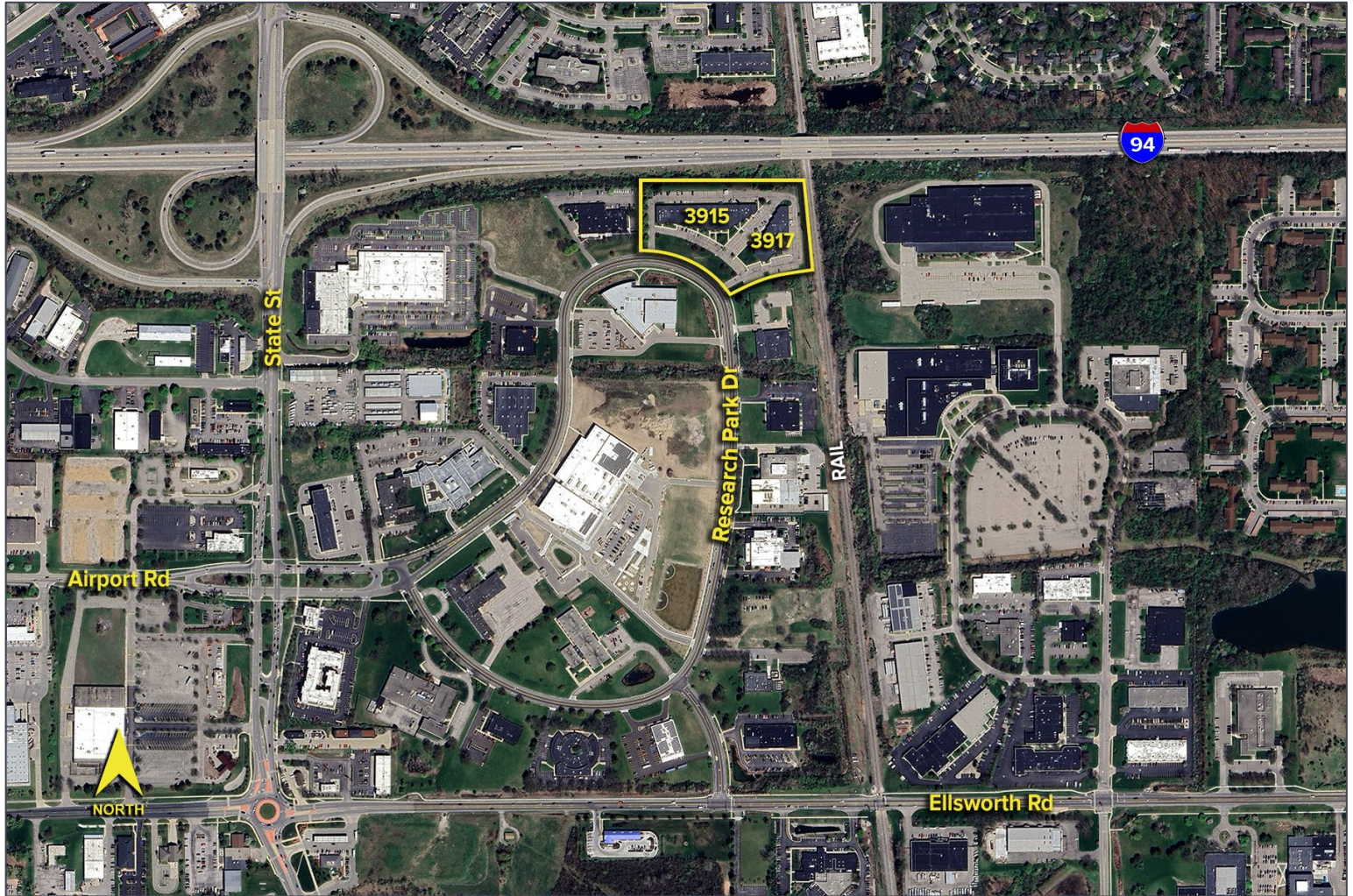
SIGNATURE ASSOCIATES
One Towne Square, Suite 1200
Southfield, MI 48076
www.signatureassociates.com

3915 Research Park Drive – Ann Arbor, Michigan

Hi-Tech / R&D / Office For Lease

5,121
Square Feet
AVAILABLE

Aerial



For more information, please contact:

JAY CHAVEY
(248) 948 4196
jchavey@signatureassociates.com

DRAKE FILIPPIS
(248) 799 3161
dfilippis@signatureassociates.com

SIGNATURE ASSOCIATES
One Towne Square, Suite 1200
Southfield, MI 48076
www.signatureassociates.com