

3915 RESEARCH PARK DRIVE
ANN ARBOR, MICHIGAN

HI-TECH / R&D / OFFICE FOR LEASE
1,817 – 5,121 Square Feet Available



**SIGNATURE
ASSOCIATES**
KNOW SIGNATURE | KNOW RESULTS

INTECH BUSINESS PARK

LEASE RATE REDUCED



PROPERTY FEATURES

- | • Available Units | A-2 | A-9 |
|-------------------|---------------|---------------|
| Office Space | 1,330 sq. ft. | 3,704 sq. ft. |
| Hi-Bay Space | 487 sq. ft. | 1,417 sq. ft. |
| Total | 1,817 sq. ft. | 5,121 sq. ft. |
- Flex suites with office/shop/lab combo areas
 - 13' clear height
 - Each unit has a private suite entrance and access to hi-bay area by 1-2 grade level over head doors
 - Zoned Research
 - Beautiful corporate campus setting with on-site ample parking
 - Easy access to I-94 expressway via State Street interchange
 - Immediately Available
 - Reduced Lease Rate: \$10.25/sq. ft. NNN
 - 2025 operating expense budget is \$5.86/sq. ft.



For more information, please contact:

JAY CHAVEY
(248) 948 4196
jchavey@signatureassociates.com

DRAKE FILIPPIS
(248) 799 3161
dfilippis@signatureassociates.com

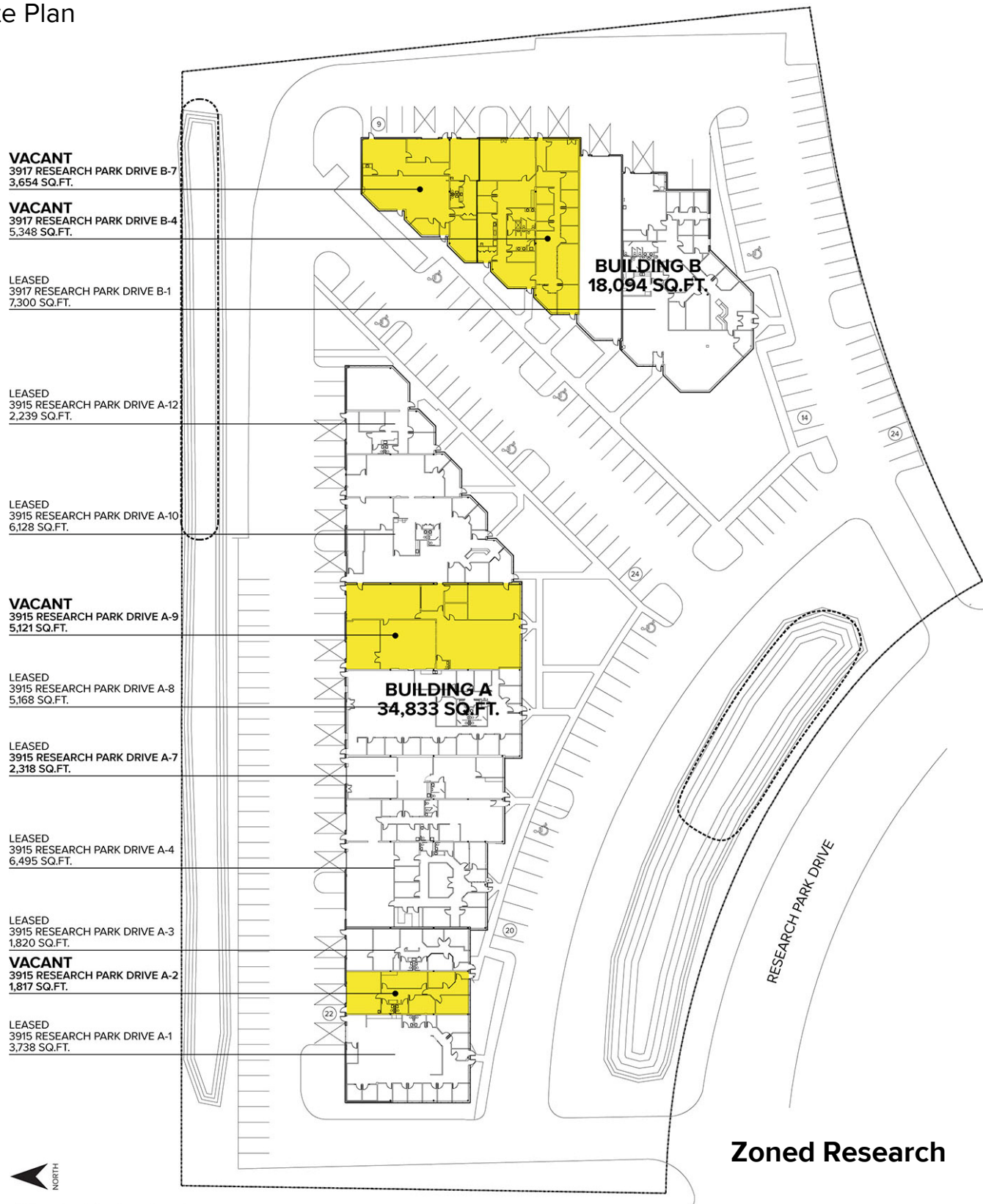
SIGNATURE ASSOCIATES
One Towne Square, Suite 1200
Southfield, MI 48076
www.signatureassociates.com

3915 Research Park Drive – Ann Arbor, Michigan

Hi-Tech / R&D / Office For Lease

1,817 – 5,121
Square Feet
AVAILABLE

Site Plan



For more information, please contact:

JAY CHAVEY
(248) 948 4196

jchavey@signatureassociates.com

DRAKE FILIPPIS
(248) 799 3161

dfilippis@signatureassociates.com

SIGNATURE ASSOCIATES
One Towne Square, Suite 1200
Southfield, MI 48076
www.signatureassociates.com

3915 Research Park Drive – Ann Arbor, Michigan

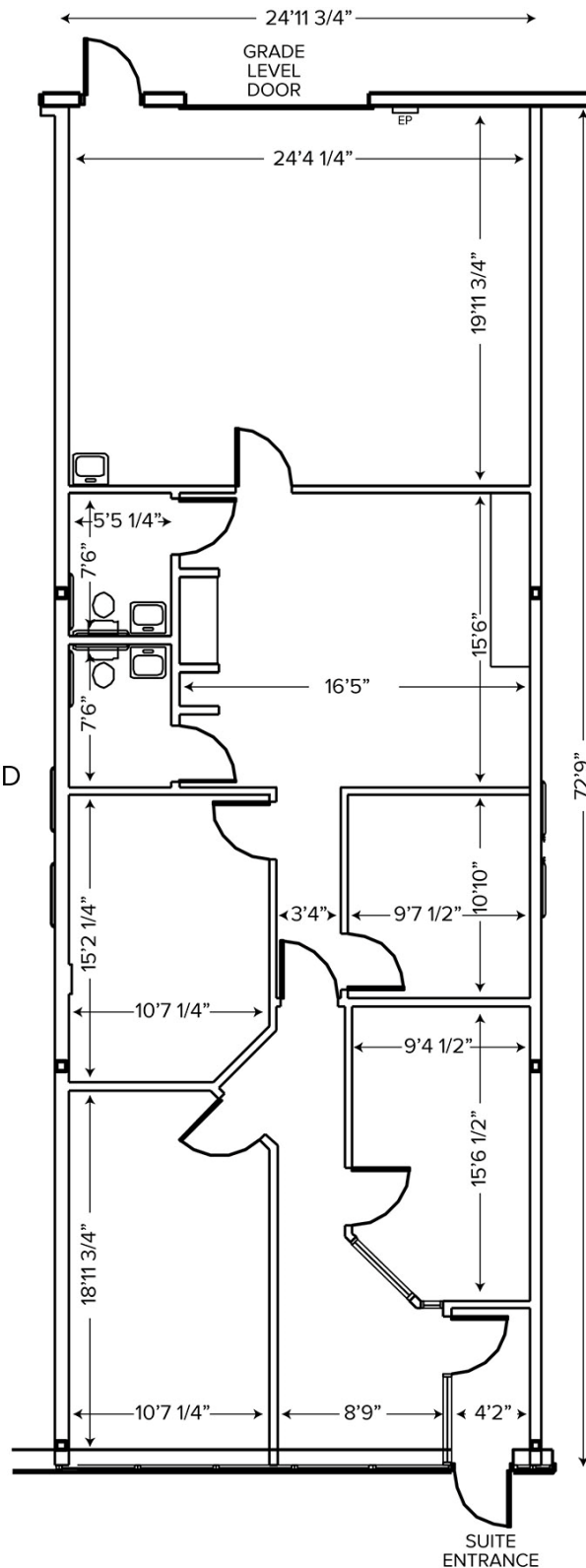
Hi-Tech / R&D / Office For Lease

1,817 – 5,121
Square Feet
AVAILABLE

Floor Plan Unit A-2

OFFICE:	1,296 SQ.FT.
HI-BAY:	521 SQ.FT.
TOTAL:	1,817 SQ.FT.

100% HEATED & AIR CONDITIONED
1 ACTIVE GRADE LEVEL DOOR



For more information, please contact:

JAY CHAVEY
(248) 948 4196
jchavey@signatureassociates.com

DRAKE FILIPPIS
(248) 799 3161
dfilippis@signatureassociates.com

SIGNATURE ASSOCIATES
One Towne Square, Suite 1200
Southfield, MI 48076
www.signatureassociates.com

3915 Research Park Drive – Ann Arbor, Michigan

Hi-Tech / R&D / Office For Lease

1,817 – 5,121
Square Feet
AVAILABLE

Interior Photos

Unit A-2



Entrance & Offices



Break & Open Area



Conference Room or Office



Hi-Bay Garage

For more information, please contact:

JAY CHAVEY
(248) 948 4196

jchavey@signatureassociates.com

DRAKE FILIPPIS
(248) 799 3161

dfilippis@signatureassociates.com

SIGNATURE ASSOCIATES
One Towne Square, Suite 1200
Southfield, MI 48076
www.signatureassociates.com

Information is subject to verification and no liability for errors or omissions is assumed. Price is subject to change and listing withdrawal.

3915 Research Park Drive – Ann Arbor, Michigan

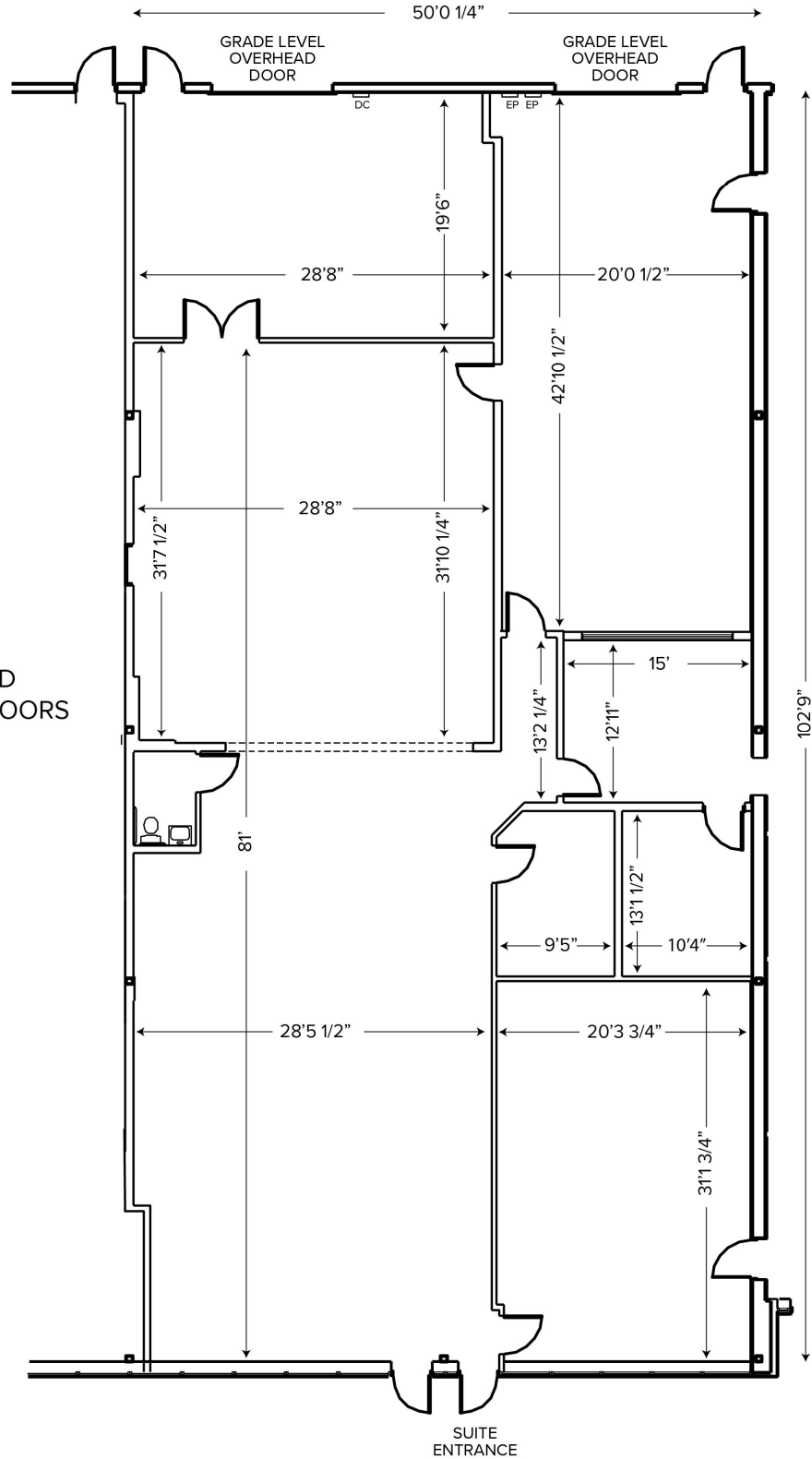
Hi-Tech / R&D / Office For Lease

1,817 – 5,121
Square Feet
AVAILABLE

Floor Plan Unit A-9

OFFICE: 3,616 SQ.FT.
HI-BAY: 1,505 SQ.FT.
TOTAL: 5,121 SQ.FT.

100% HEATED & AIR CONDITIONED
2 ACTIVE GRADE LEVEL OVERHEAD DOORS



For more information, please contact:

JAY CHAVEY
(248) 948 4196
jchavey@signatureassociates.com

DRAKE FILIPPIS
(248) 799 3161
dfilippis@signatureassociates.com

SIGNATURE ASSOCIATES
One Towne Square, Suite 1200
Southfield, MI 48076
www.signatureassociates.com

3915 Research Park Drive – Ann Arbor, Michigan

Hi-Tech / R&D / Office For Lease

1,817 – 5,121
Square Feet
AVAILABLE

Interior Photos Unit A-9



Office Area



Office Area



Hi-Bay Tech Area

For more information, please contact:

JAY CHAVEY
(248) 948 4196
jchavey@signatureassociates.com

DRAKE FILIPPIS
(248) 799 3161
dfilippis@signatureassociates.com

SIGNATURE ASSOCIATES
One Towne Square, Suite 1200
Southfield, MI 48076
www.signatureassociates.com

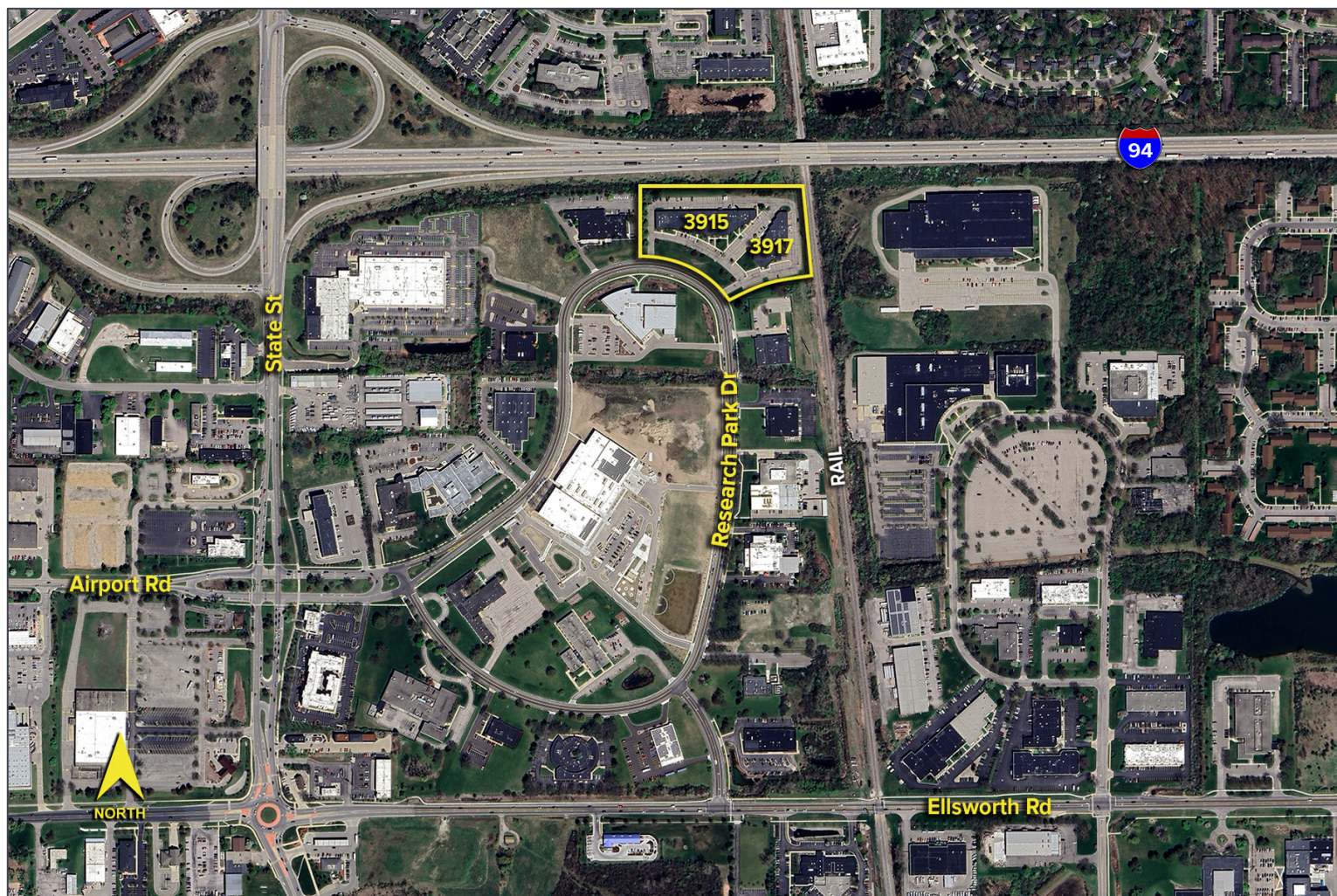
Information is subject to verification and no liability for errors or omissions is assumed. Price is subject to change and listing withdrawal.

3915 Research Park Drive – Ann Arbor, Michigan

Hi-Tech / R&D / Office For Lease

1,817 – 5,121
Square Feet
AVAILABLE

Aerial



For more information, please contact:

JAY CHAVEY
(248) 948 4196
jchavey@signatureassociates.com

DRAKE FILIPPIS
(248) 799 3161
dfilippis@signatureassociates.com

SIGNATURE ASSOCIATES
One Towne Square, Suite 1200
Southfield, MI 48076
www.signatureassociates.com

Information is subject to verification and no liability for errors or omissions is assumed. Price is subject to change and listing withdrawal.