



# PILOT

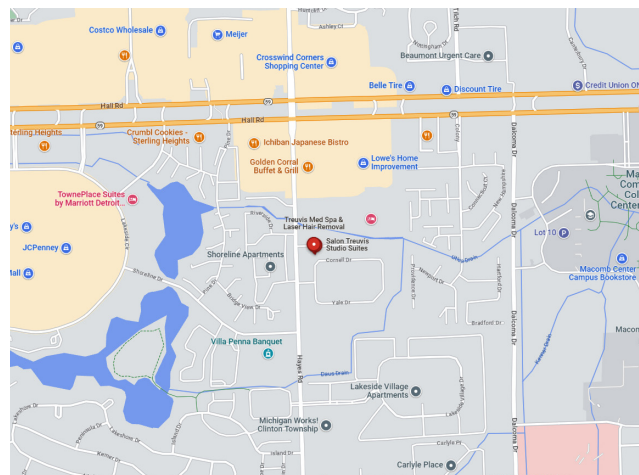
## PROPERTY GROUP

**44480 HAYES ROAD, CLINTON TOWNSHIP, MI 48038**

### PROPERTY OVERVIEW:

North end cap, former title company space.  
Well-Maintained Plaza.  
Excellent Location near Hall Road.  
Contact the Broker for more details.

Property Type: ..... Retail/Office  
Cross Streets: ..... East side of Hayes, South of Hall Road  
Total Square Footage: ..... 21,648  
Building Name: ..... Altadonna Suites  
Minimum Square Footage: .... 1,970  
Maximum Square Footage: .... 1,970  
Year Built: ..... 2002  
Zoning: ..... B2  
Parking Spaces: ..... 50+  
Lease Rate: ..... \$15.00  
Lease Type: ..... NNN



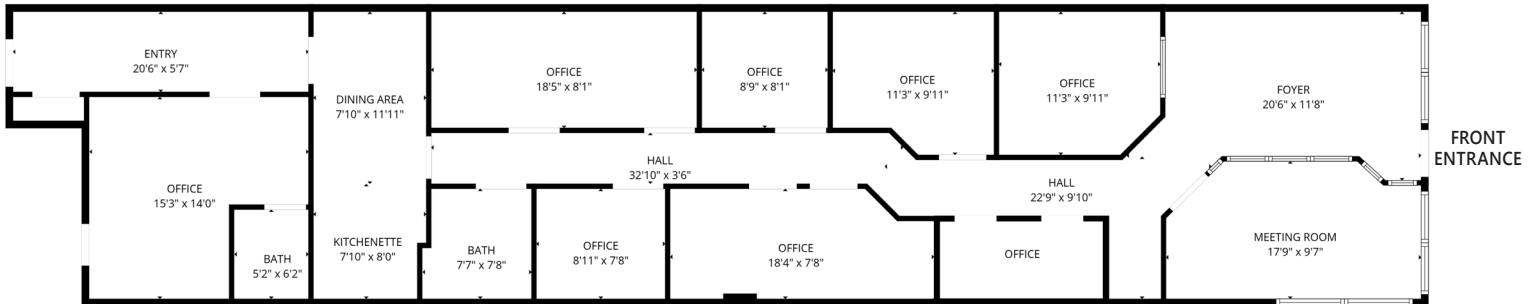
### AGENT CONTACT INFO

**ALEX TERMINI** O: 586.254.0900 x104 • C: 586.291.0499 • alex@pilotpg.com

*Matching the right people to the right place.*

Offices in Sterling Heights and Port Huron to serve you  
586.254.0900 • www.pilotpg.com

**FLOORPLAN**



***Matching the right people to the right place.***

Offices in Sterling Heights and Port Huron to serve you  
586.254.0900 • [www.pilotpg.com](http://www.pilotpg.com)



## TRADE AREA



*Matching the right people to the right place.*

Offices in Sterling Heights and Port Huron to serve you  
586.254.0900 • [www.pilotpg.com](http://www.pilotpg.com)



## ADDITIONAL PHOTOS



*Matching the right people to the right place.*

Offices in Sterling Heights and Port Huron to serve you  
586.254.0900 • [www.pilotpg.com](http://www.pilotpg.com)