

555 REPUBLIC DRIVE  
ALLEN PARK, MICHIGAN

HI-TECH FOR SALE OR LEASE  
5,000 - 33,781 Square Feet



**SIGNATURE  
ASSOCIATES**  
KNOW SIGNATURE | KNOW RESULTS

## FAIRLANE BUSINESS PARK



### PROPERTY FEATURES

- 5,000 - 33,781 square feet available
- 14,581 square feet office
- Premium hi-tech building
- Up to 19,200 sq. ft. of high bay space with 17' clear
- (1) 12'x14' grade level door
- Located close to M-39 & I-94 freeways
- Excellent location, close to vibrant business community, shopping/amenities
- Truckwells/docks can be added
- Lease Rate: \$9.00/sq. ft. NNN
- Sale Price: \$2,900,000 (\$85.85/sq. ft.)



For more information, please contact:

**BRAD VIERGEVER**  
(248) 799 3146  
bviergever@signatureassociates.com

**CHRIS SECONTINE**  
(248) 799 3174  
csecontine@signatureassociates.com

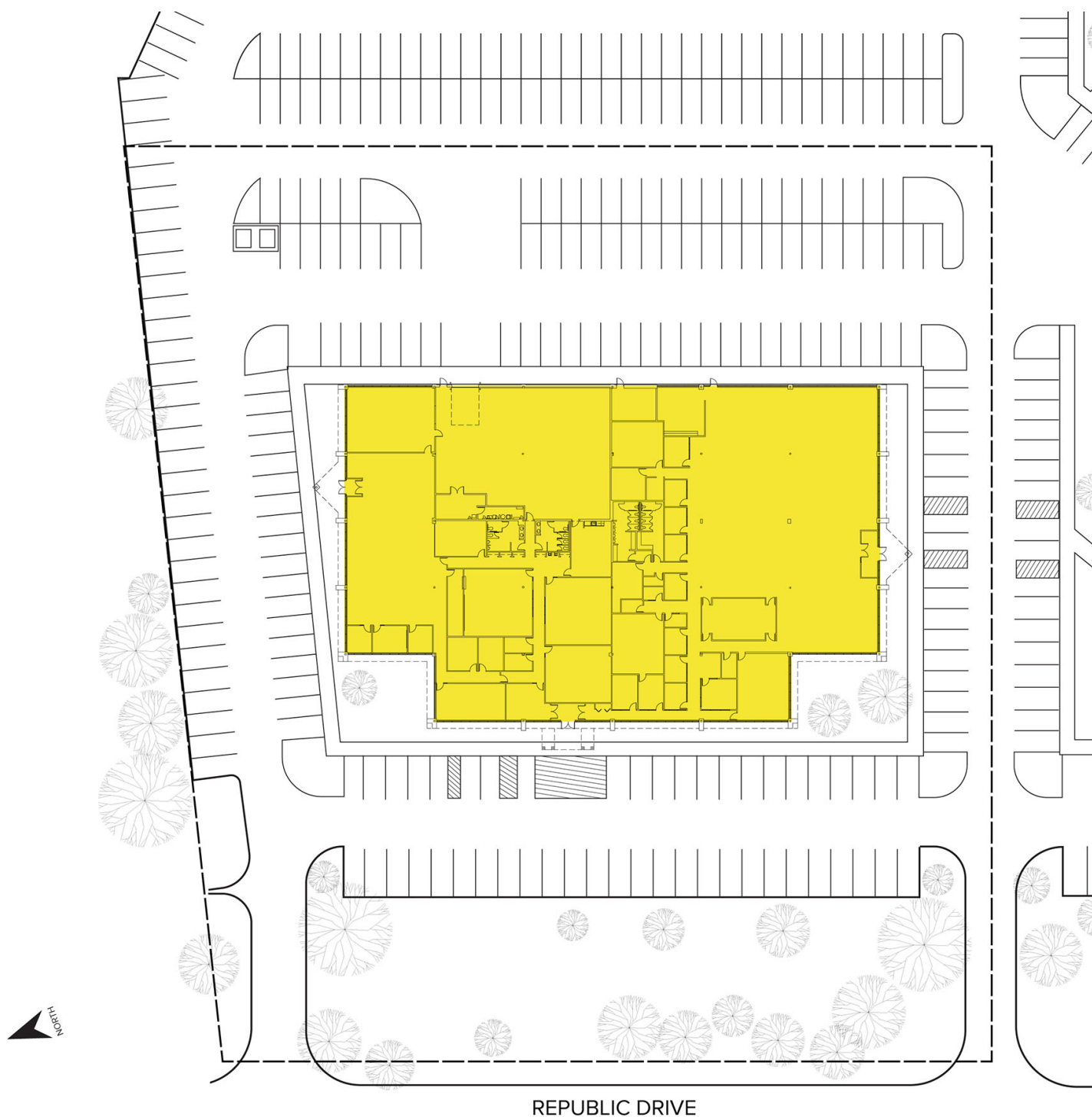
**SIGNATURE ASSOCIATES**  
One Towne Square, Suite 1200  
Southfield, MI 48076  
www.signatureassociates.com

# 555 Republic Drive – Allen Park, Michigan

## Hi-Tech For Sale or Lease

5,000 - 33,781  
Square Feet  
AVAILABLE

### Site Plan



For more information, please contact:

**BRAD VIERGEVER**

(248) 799 3146

[bviergever@signatureassociates.com](mailto:bviergever@signatureassociates.com)

**CHRIS SECONTINE**

(248) 799 3174

[csecontine@signatureassociates.com](mailto:csecontine@signatureassociates.com)

**SIGNATURE ASSOCIATES**

One Towne Square, Suite 1200

Southfield, MI 48076

[www.signatureassociates.com](http://www.signatureassociates.com)

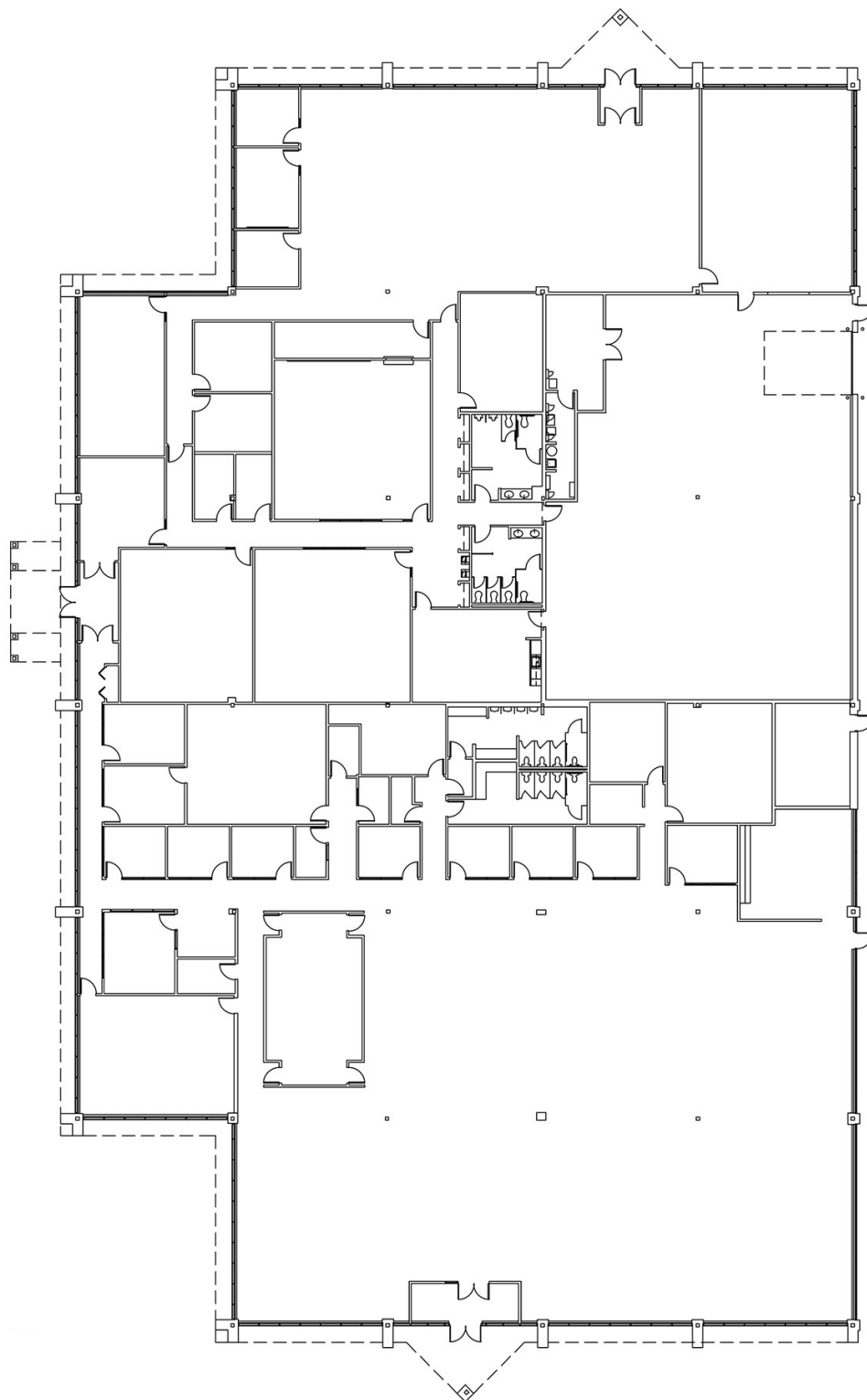
Information is subject to verification and no liability for errors or omissions is assumed. Price is subject to change and listing withdrawal.

# 555 Republic Drive – Allen Park, Michigan

## Hi-Tech For Sale or Lease

5,000 - 33,781  
Square Feet  
AVAILABLE

### Floor Plan



For more information, please contact:

**BRAD VIERGEVER**

(248) 799 3146

[bviergever@signatureassociates.com](mailto:bviergever@signatureassociates.com)

**CHRIS SECONTINE**

(248) 799 3174

[csecontine@signatureassociates.com](mailto:csecontine@signatureassociates.com)

**SIGNATURE ASSOCIATES**

One Towne Square, Suite 1200

Southfield, MI 48076

[www.signatureassociates.com](http://www.signatureassociates.com)

Information is subject to verification and no liability for errors or omissions is assumed. Price is subject to change and listing withdrawal.



# 555 Republic Drive – Allen Park, Michigan

## Hi-Tech For Sale or Lease

5,000 - 33,781  
Square Feet  
AVAILABLE

Aerial



For more information, please contact:

**BRAD VIERGEVER**

(248) 799 3146

[bviergever@signatureassociates.com](mailto:bviergever@signatureassociates.com)

**CHRIS SECONTINE**

(248) 799 3174

[csecontine@signatureassociates.com](mailto:csecontine@signatureassociates.com)

**SIGNATURE ASSOCIATES**

One Towne Square, Suite 1200

Southfield, MI 48076

[www.signatureassociates.com](http://www.signatureassociates.com)

Information is subject to verification and no liability for errors or omissions is assumed. Price is subject to change and listing withdrawal.