

**28003 CENTER OAKS COURT
UNIT #106
WIXOM, MICHIGAN**

**HI-TECH FOR LEASE
5,600 Square Feet Available**



**SIGNATURE
ASSOCIATES**
KNOW SIGNATURE | KNOW RESULTS

GRAND OAKS COMMERCE CENTER



PROPERTY FEATURES

- 5,600 square feet available
- 4,800 square foot office
- 16' clear height
- (1) 8' x 10' grade level door
- High image flex space
- Extremely well-maintained and clean
- Corner unit with fantastic Grand River Avenue frontage and numerous perimeter window offices
- Small warehouse can be enlarged
- One mile from I-96 freeway via Wixom Road
- Lease Rate: \$13.25/sq. ft. Gross



For more information, please contact:

CHRIS D'ANGELO
(248) 948 0109
cdangelo@signatureassociates.com

JIM MONTGOMERY
(248) 359 0614
jmontgomery@signatureassociates.com

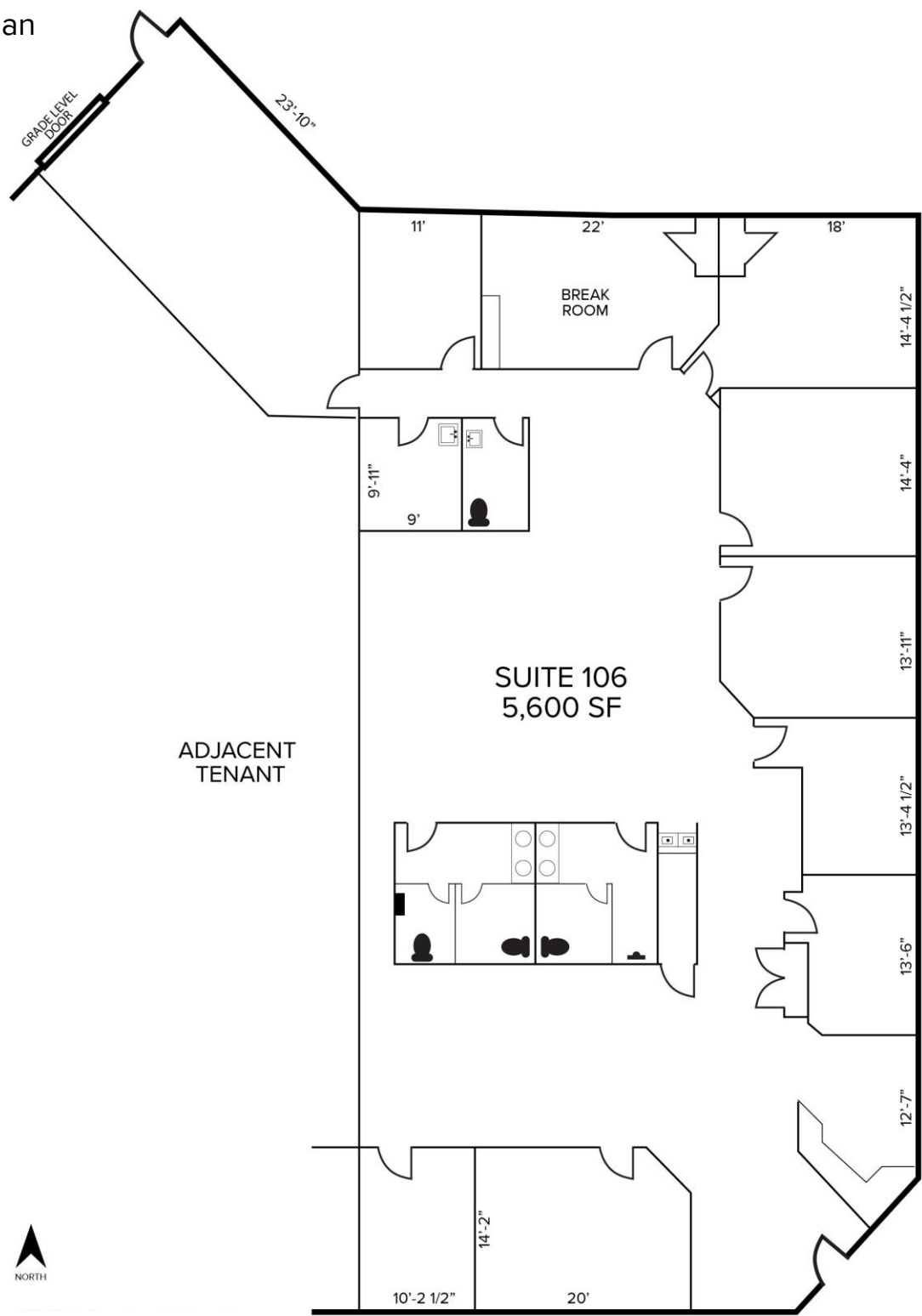
SIGNATURE ASSOCIATES
One Towne Square, Suite 1200
Southfield, MI 48076
www.signatureassociates.com

28003 Center Oaks Court – Wixom, Michigan

Hi-Tech For Lease

5,600
Square Feet
AVAILABLE

Floor Plan



For more information, please contact:

CHRIS D'ANGELO
(248) 948 0109
cdangelo@signatureassociates.com

JIM MONTGOMERY
(248) 359 0614
jmontgomery@signatureassociates.com

SIGNATURE ASSOCIATES
One Towne Square, Suite 1200
Southfield, MI 48076
www.signatureassociates.com

28003 Center Oaks Court – Wixom, Michigan

Hi-Tech For Lease

5,600
Square Feet
AVAILABLE

Aerial



For more information, please contact:

CHRIS D'ANGELO

(248) 948 0109

cdangelo@signatureassociates.com

JIM MONTGOMERY

(248) 359 0614

jmontgomery@signatureassociates.com

SIGNATURE ASSOCIATES

One Towne Square, Suite 1200

Southfield, MI 48076

www.signatureassociates.com

Information is subject to verification and no liability for errors or omissions is assumed. Price is subject to change and listing withdrawal.