

13801 FENKELL AVENUE  
DETROIT, MICHIGAN

RETAIL FOR SALE  
3,600 Square Feet Available



**SIGNATURE  
ASSOCIATES**  
KNOW SIGNATURE | KNOW RESULTS



## PROPERTY FEATURES

- 3,600 square feet available
- Great space for event hall, church, or lodge
- Ample parking
- Corner location in Detroit
- Sale Price: \$135,000 (\$37.50/sq. ft.)



For more information, please contact:

**JOE STACK**  
(248) 359 0615  
jstack@signatureassociates.com

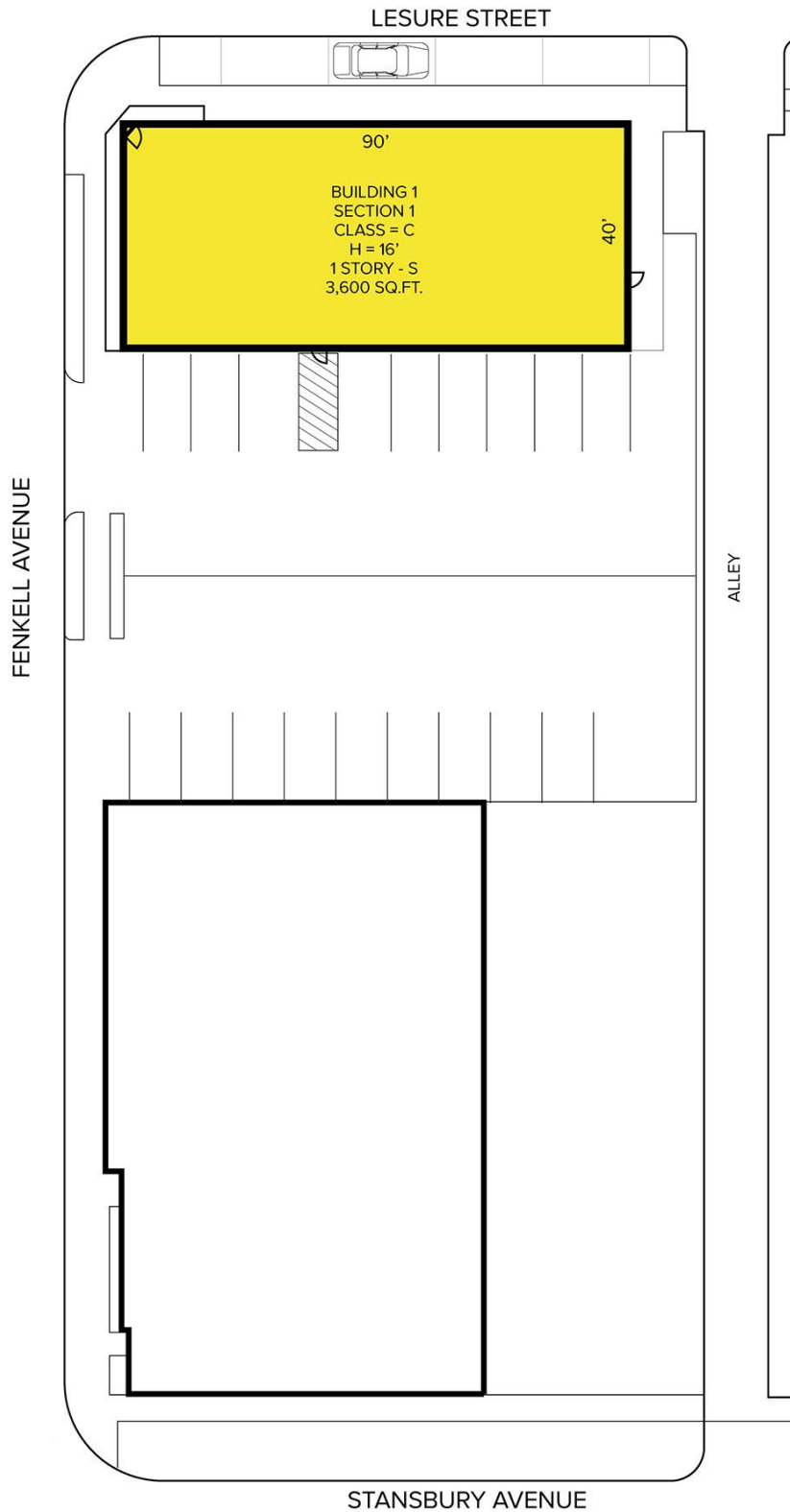
**SIGNATURE ASSOCIATES**  
One Towne Square, Suite 1200  
Southfield, MI 48076  
www.signatureassociates.com

# 13801 Fenkell Avenue – Detroit, Michigan

Retail For Sale

3,600  
Square Feet  
AVAILABLE

## Site Plan



For more information, please contact:

**JOE STACK**  
(248) 359 0615  
jstack@signatureassociates.com

**SIGNATURE ASSOCIATES**  
One Towne Square, Suite 1200  
Southfield, MI 48076  
www.signatureassociates.com

# 13801 Fenkell Avenue – Detroit, Michigan

Retail For Sale

3,600  
Square Feet  
AVAILABLE

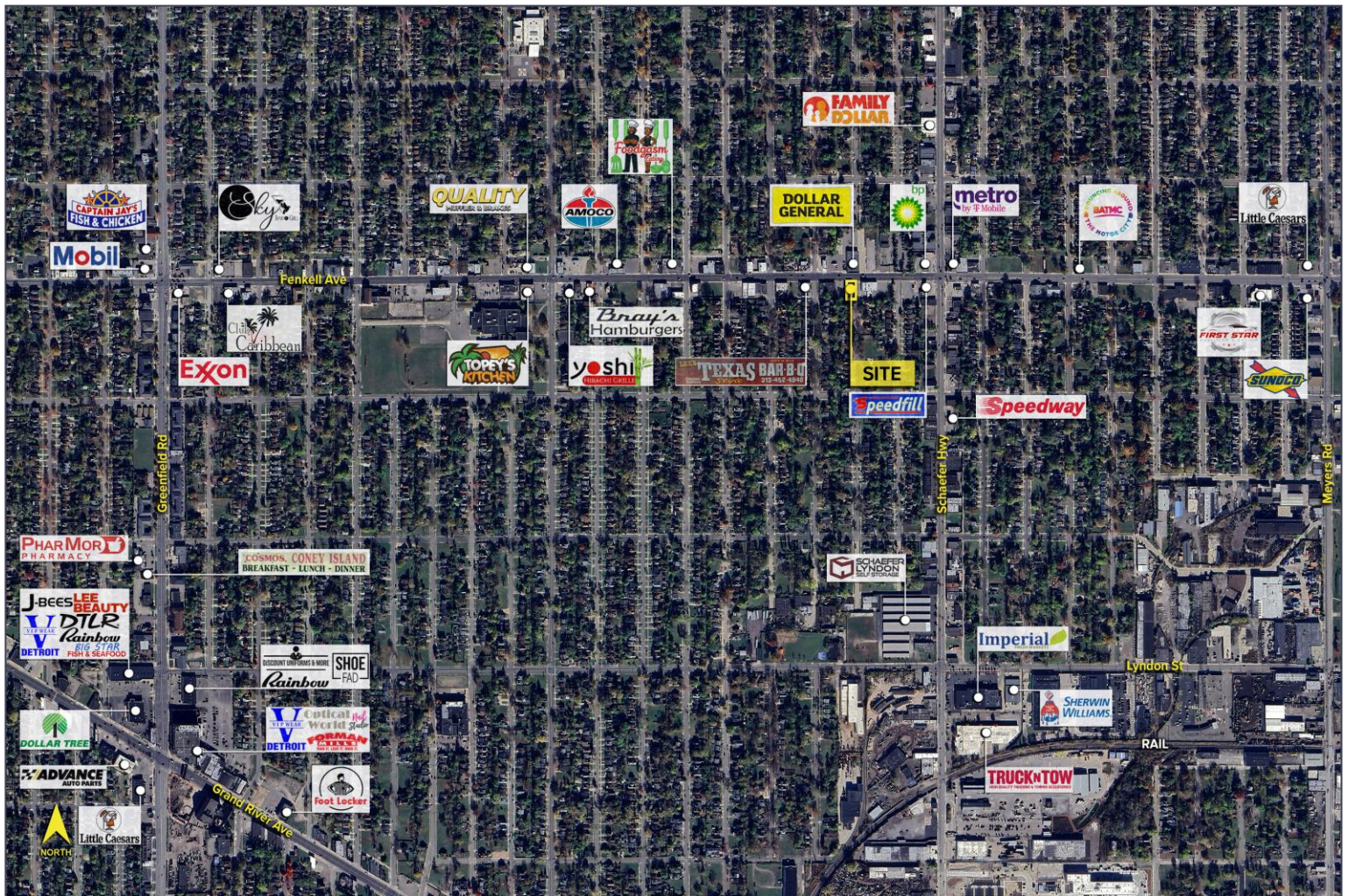


## DEMOGRAPHICS

	POPULATION	MED. HH INCOME
1 MILE	21,489	\$37,098
3 MILE	172,889	\$45,948
5 MILE	422,829	\$49,703

## TRAFFIC COUNTS (TWO-WAY)

9,135	Fenkell Ave. W of Schaefer Hwy.
8,323	Fenkell Ave. E of Schaefer Hwy.
8,846	Schaefer Hwy. S of Fenkell Ave.
9,223	Schaefer Hwy. N of Fenkell Ave.



For more information, please contact:

**JOE STACK**  
(248) 359 0615  
jstack@signatureassociates.com

**SIGNATURE ASSOCIATES**  
One Towne Square, Suite 1200  
Southfield, MI 48076  
www.signatureassociates.com