

33100 FISHER DRIVE
ST. CLAIR SHORES, MICHIGAN

INDUSTRIAL FOR SALE OR LEASE
39,581 Square Feet Available



**SIGNATURE
ASSOCIATES**
KNOW SIGNATURE | KNOW RESULTS



PROPERTY FEATURES

- 39,581 square foot building
- 3,300 square feet office
- 12' – 19' clear height
- (3) 12x14, 14x16 grade level doors & (2) truckwells
- 3000 amps, 240 volts
- Located on 2.155 acres
- Freeway exposure
- 60' x 198' bay
- Additional parking available
- Sale Price: \$2,500,000 (\$63.16/sq. ft.)
- Asking Lease Rate: \$7.25/sf NNN



For more information, please contact:

JOHN BOYD
(248) 948 0102
jboyd@signatureassociates.com

PAUL HOGE
(248) 948 0103
paulhoge@signatureassociates.com

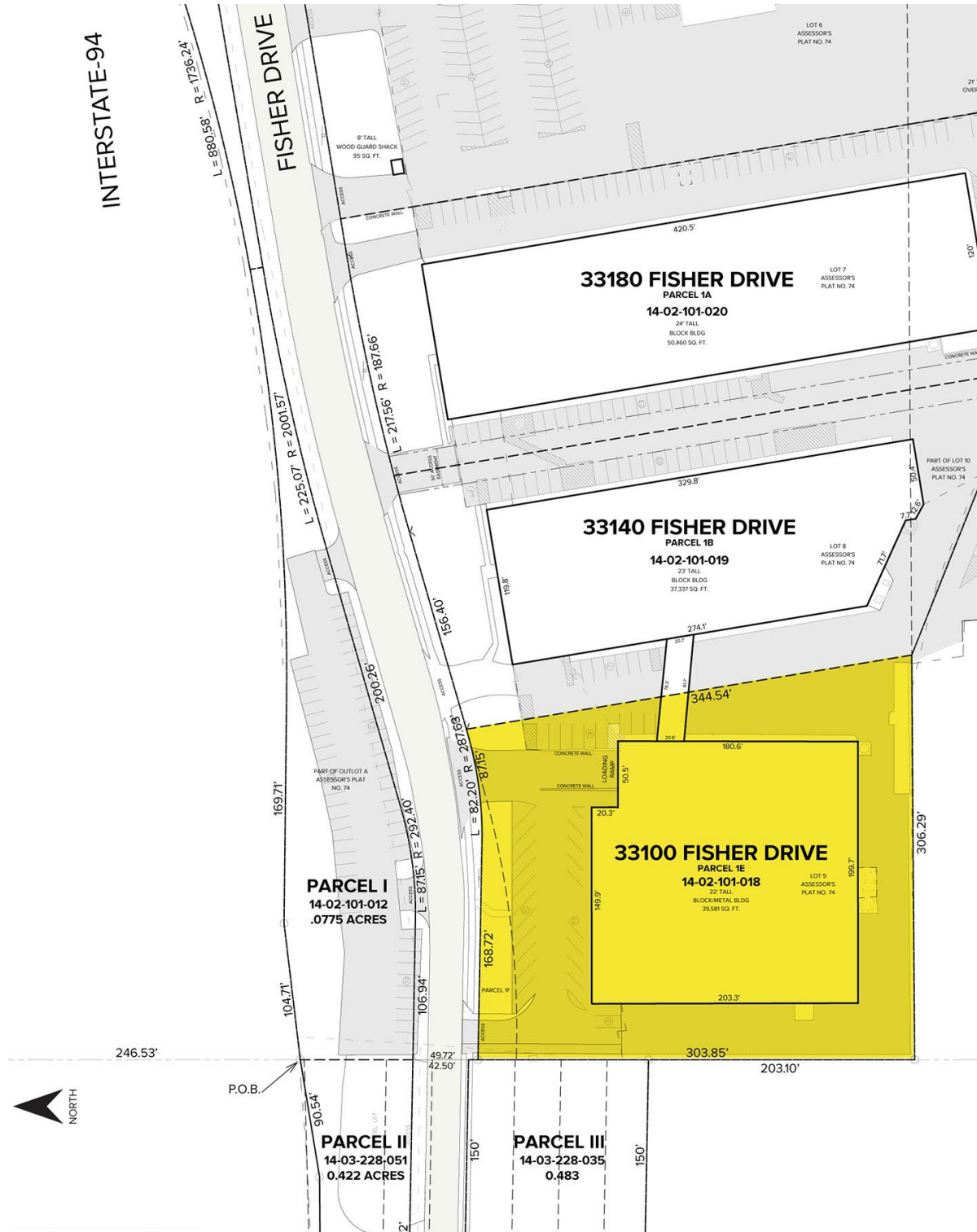
SIGNATURE ASSOCIATES
One Towne Square, Suite 1200
Southfield, MI 48076
www.signatureassociates.com

33100 Fisher Drive – St. Clair Shores, Michigan

Industrial For Sale or Lease

39,581
Square Feet
AVAILABLE

Site Plan



For more information, please contact:

JOHN BOYD
(248) 948 0102
jboyd@signatureassociates.com

PAUL HOGE
(248) 948 0103
paulhoge@signatureassociates.com

SIGNATURE ASSOCIATES
One Towne Square, Suite 1200
Southfield, MI 48076
www.signatureassociates.com

33100 Fisher Drive – St. Clair Shores, Michigan

Industrial For Sale or Lease

39,581
Square Feet
AVAILABLE

Aerial



For more information, please contact:

JOHN BOYD
(248) 948 0102
jboyd@signatureassociates.com

PAUL HOGE
(248) 948 0103
paulhoge@signatureassociates.com

SIGNATURE ASSOCIATES
One Towne Square, Suite 1200
Southfield, MI 48076
www.signatureassociates.com

Information is subject to verification and no liability for errors or omissions is assumed. Price is subject to change and listing withdrawal.