

24850 GRATIOT AVENUE
EASTPOINTE, MICHIGAN

RETAIL FOR SALE OR LEASE
4,711 Square Feet Available



**SIGNATURE
ASSOCIATES**
KNOW SIGNATURE | KNOW RESULTS



PROPERTY FEATURES

- 4,711 square feet available
- Excellent showroom building
- 14' ceiling height
- Live/work potential
- Apartment with many updates
- Brand new roof
- Parking for 12 with delivery area in back
- Lease Rate: Contact Broker
- Sale Price: \$545,000 (\$115.69/sq. ft.)



For more information, please contact:

JOE STACK
(248) 359 0615
jstack@signatureassociates.com

CHRIS MONSOUR
(248) 948 0107
cmonsour@signatureassociates.com

SIGNATURE ASSOCIATES
One Towne Square, Suite 1200
Southfield, MI 48076
www.signatureassociates.com

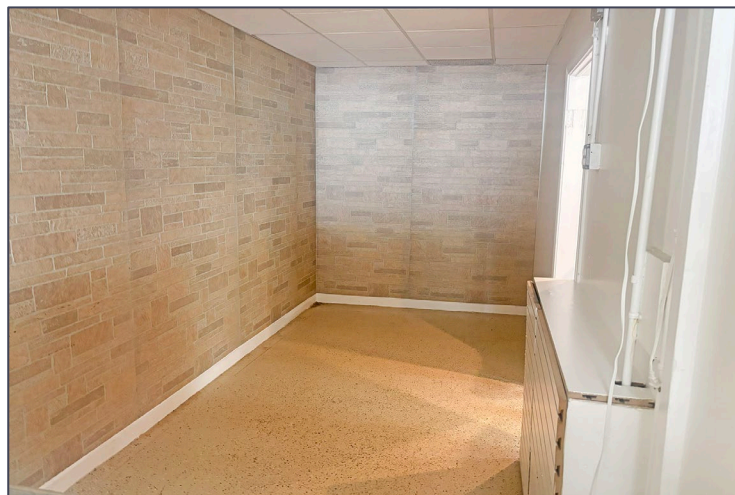
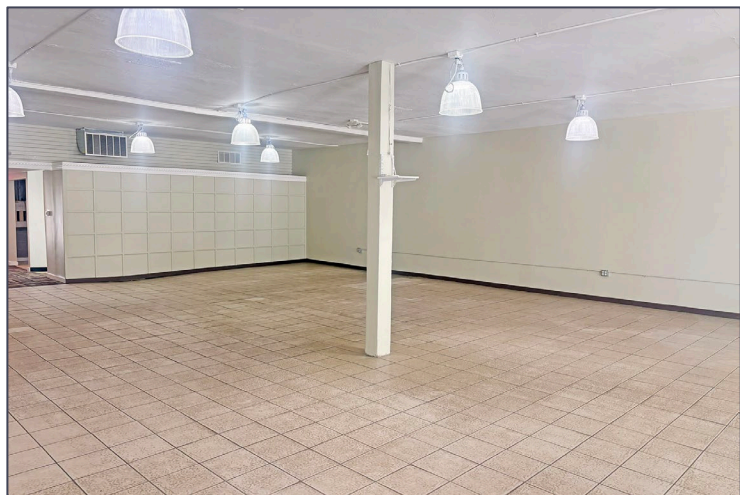
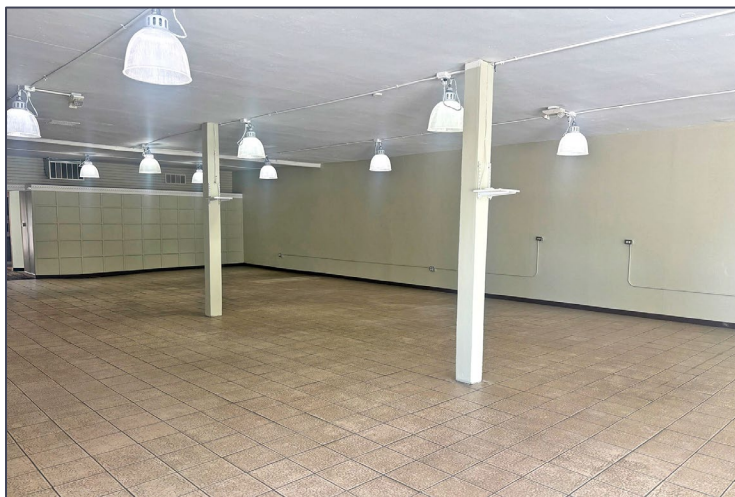
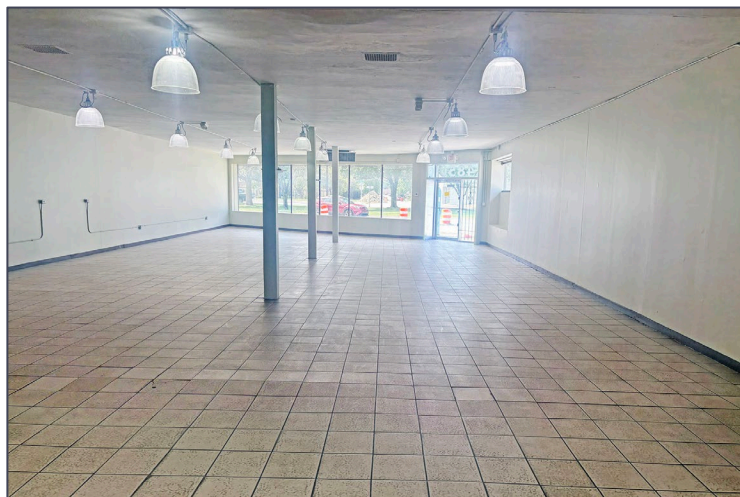
Information is subject to verification and no liability for errors or omissions is assumed. Price is subject to change and listing withdrawal.

24850 Gratiot Avenue – Eastpointe, Michigan

Retail For Sale or Lease

4,711
Square Feet
AVAILABLE

Interior Photos



For more information, please contact:

JOE STACK
(248) 359 0615
jstack@signatureassociates.com

CHRIS MONSOUR
(248) 948 0107
cmonsour@signatureassociates.com

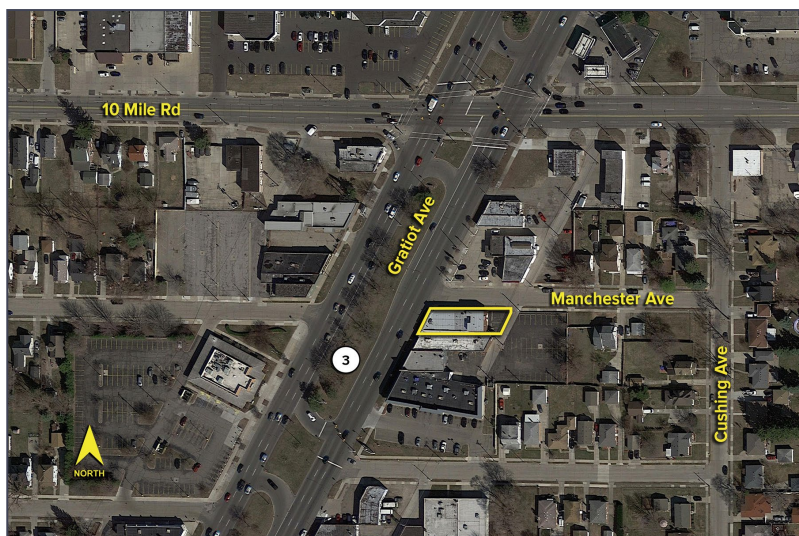
SIGNATURE ASSOCIATES
One Towne Square, Suite 1200
Southfield, MI 48076
www.signatureassociates.com

Information is subject to verification and no liability for errors or omissions is assumed. Price is subject to change and listing withdrawal.

24850 Gratiot Avenue – Eastpointe, Michigan

Retail For Sale or Lease

4,711
Square Feet
AVAILABLE

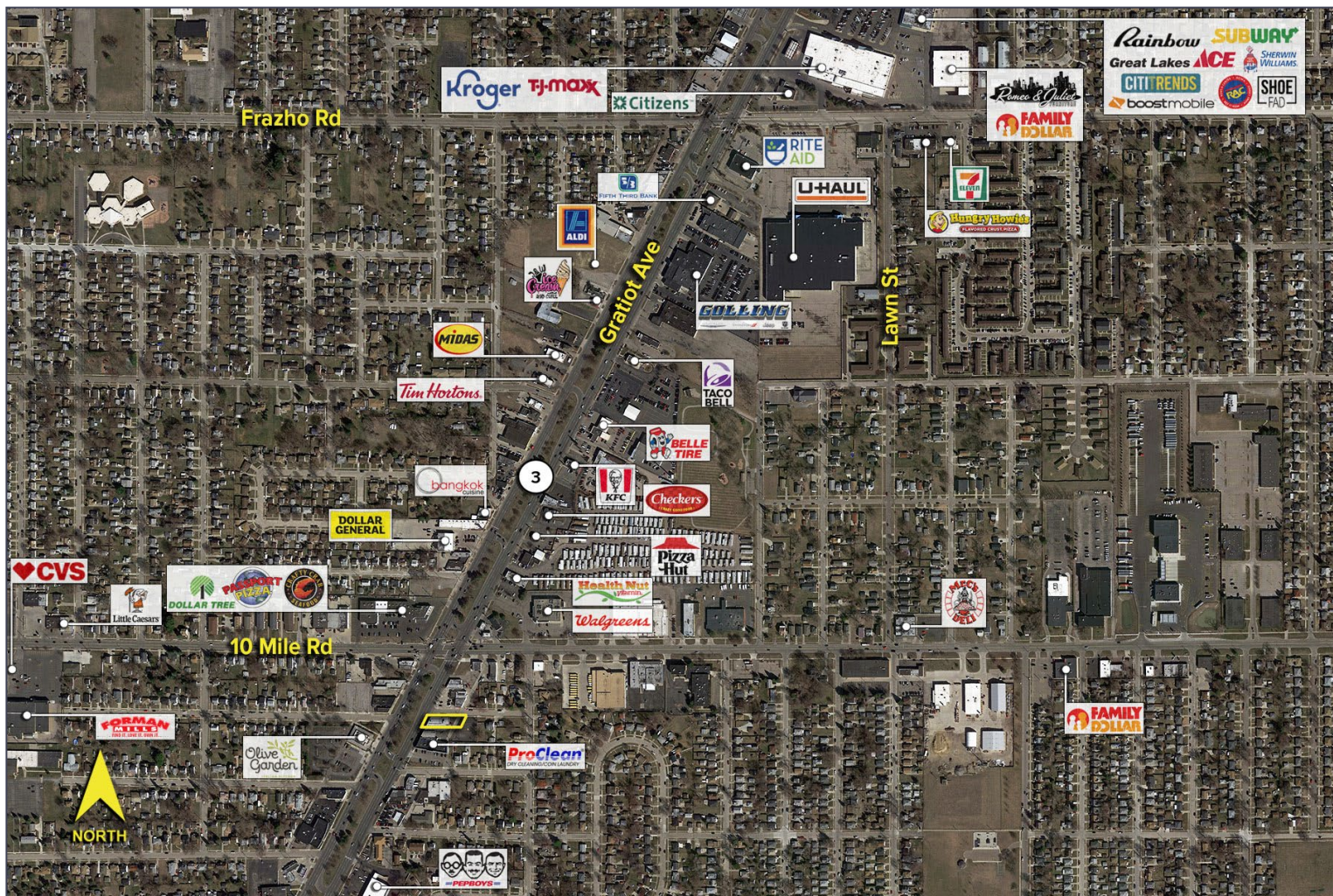


DEMOGRAPHICS

	POPULATION	MED. HH INCOME
1 MILE	20,872	\$61,776
3 MILE	149,232	\$65,256
5 MILE	356,576	\$66,927

TRAFFIC COUNTS (TWO-WAY)

51,356	Gratiot Ave. S. of 10 Mile Rd.
50,439	Gratiot Ave. N. of 10 Mile Rd.
20,549	10 Mile Rd. E. of Gratiot Ave.
19,539	10 Mile Rd. W. of Gratiot Ave.



For more information, please contact:

JOE STACK
(248) 359 0615
jstack@signatureassociates.com

CHRIS MONSOUR
(248) 948 0107
cmonsour@signatureassociates.com

SIGNATURE ASSOCIATES
One Towne Square, Suite 1200
Southfield, MI 48076
www.signatureassociates.com