



**LEASE**

**2426 E GRAND  
RIVER**

**2426 E Grand River  
Howell, MI 48843**

Commercial opportunity on a busy, high-traffic corner of Chilson and Grand River! Main intersection means great visibility and just minutes to Downtown Howell. Building is a great owner user or investment opportunity space with a dynamic two-story reception area, great for a lobby or retail space. Four offices on mail level share a full bathroom. All updated mechanicals and maintenance free exterior. Newly repaved asphalt parking lot, 2023.

**ANNUAL RENT  
\$30,000.00**

**Rental Area:  
1,692 Sq. Ft.**

**Contact:**

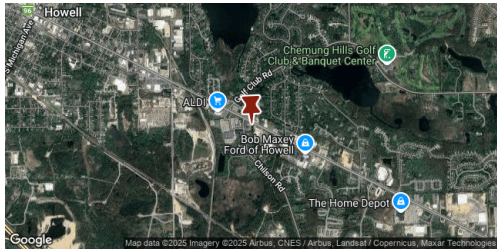
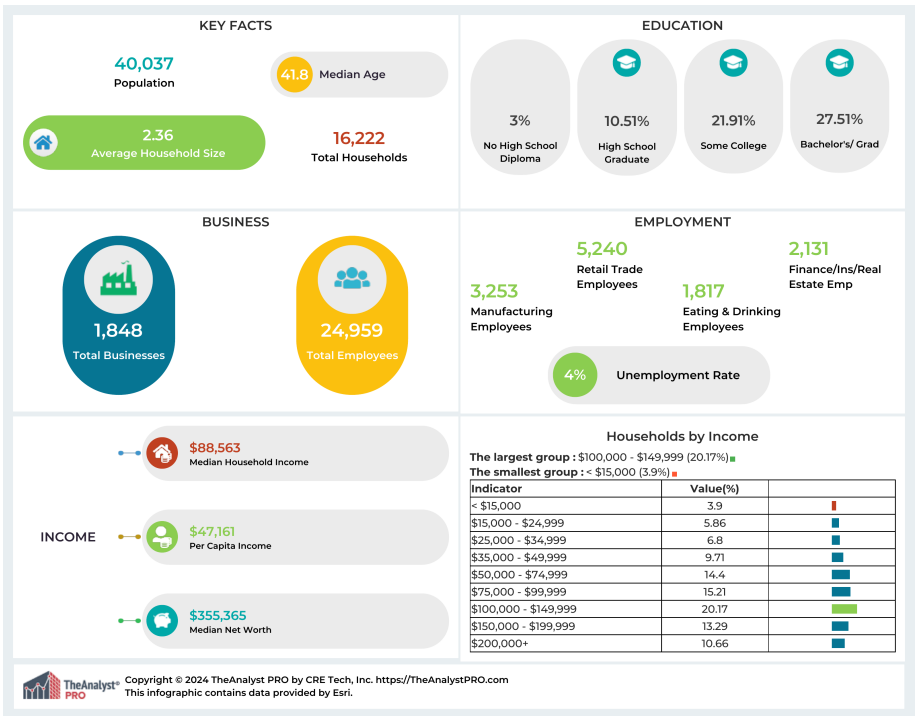
**313.312.5764**

**TREVOR BROOKS**

License: 6501374378  
t.brooks@kwcommercial.com



SM



This information has been obtained from sources believed reliable. We have not verified it and make no guarantee, warranty or representation about it. Any projections, opinions, assumptions or estimates used are for example only and do not represent the current or future performance of the property. You and your advisors should conduct a careful, independent investigation of the property to determine to your satisfaction the suitability of the property for your needs. Photos herein are the property of their respective owners and use of these images without the express written consent of the owner is prohibited.

Contact:  
**313.312.5764**  
**TREVOR BROOKS**  
License: 6501374378  
t.brooks@kwcommercial.com