

746 N. PERRY AVENUE  
PONTIAC, MICHIGAN

RETAIL FOR LEASE  
4,750 Square Feet Available



**SIGNATURE  
ASSOCIATES**  
KNOW SIGNATURE | KNOW RESULTS



## PROPERTY FEATURES

- 4,750 square feet available
- High traffic location
- Excellent visibility with ample parking
- Perfect for retail, restaurant, or medical use
- Pylon and building signage available
- Lease Rate: Contact Broker



For more information, please contact:

**ANATOLA SESI**  
(248) 359 0629  
asesi@signatureassociates.com

**MARVIN PETROUS**  
(248) 359 0647  
mpetrous@signatureassociates.com

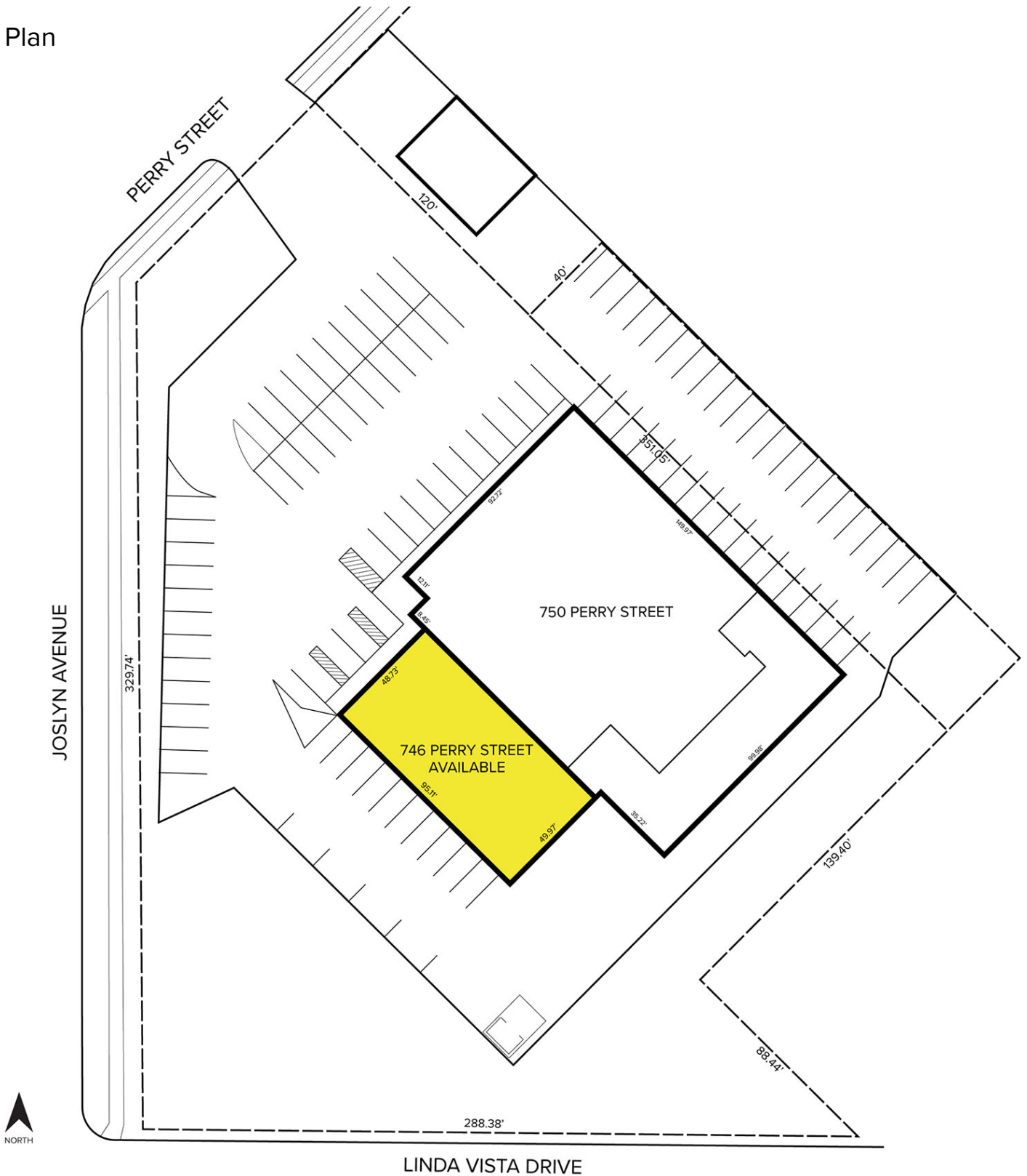
**SIGNATURE ASSOCIATES**  
One Towne Square, Suite 1200  
Southfield, MI 48076  
www.signatureassociates.com

# 746 N. Perry Avenue – Pontiac, Michigan

Retail For Lease

4,750  
Square Feet  
AVAILABLE

## Site Plan



For more information, please contact:

**ANATOLA SESI**  
(248) 359 0629  
asesi@signatureassociates.com

**MARVIN PETROUS**  
(248) 359 0647  
mpetrous@signatureassociates.com

**SIGNATURE ASSOCIATES**  
One Towne Square, Suite 1200  
Southfield, MI 48076  
www.signatureassociates.com

# 746 N. Perry Avenue – Pontiac, Michigan

## Retail For Lease

4,750  
Square Feet  
AVAILABLE



### DEMOGRAPHICS

	POPULATION	MED. HH INCOME
1 MILE	12,406	\$49,756
3 MILE	70,515	\$51,049
5 MILE	158,435	\$79,352

### TRAFFIC COUNTS (TWO-WAY)

23,262	N. Perry Ave. N of MLK Jr. Blvd.
17,293	N. Perry Ave. S of MLK Jr. Blvd.
24,004	MLK Jr. Blvd. E of N. Perry Ave.
20,063	MLK Jr. Blvd. W of N. Perry Ave.



For more information, please contact:

**ANATOLA SESI**  
(248) 359 0629  
asesi@signatureassociates.com

**MARVIN PETROUS**  
(248) 359 0647  
mpetrous@signatureassociates.com

**SIGNATURE ASSOCIATES**  
One Towne Square, Suite 1200  
Southfield, MI 48076  
www.signatureassociates.com