

NEW DEVELOPMENT

3600 E. Grand River Avenue / Howell, MI



MID-AMERICA[®]
Real Estate-Michigan, Inc.

FOR LEASE, SALE OR
BUILD TO SUIT



RETAIL OPPORTUNITY

NEW DEVELOPMENT



Address

3600 E. Grand River Avenue
Howell, MI 48843

Availability

Outlot Drive-Thru:

1,600 SF - 6,790 SF

Junior Box:

Up to 23,200 SF

Features

- Prime location on Grand River Avenue, just west of Latson Road.
- Situated directly across from Grand River Plaza (Hobby Lobby, Dunham's, Family Farm & Home, Big Lots), which is starting a large remodel in 2025.
- Surrounded by national big box retailers Home Depot, Meijer, Lowe's and Meijer.
- 391' of frontage along Grand River Avenue, the property is zoned Regional Commercial, offering versatile opportunities such as retail establishments, restaurants and bars, childcare centers, financial institutions and medical offices among others. With Special Use approval, drive-through restaurants, service stations and climate-controlled indoor commercial storage are permitted.
- Over 26,000 cars pass the site daily.

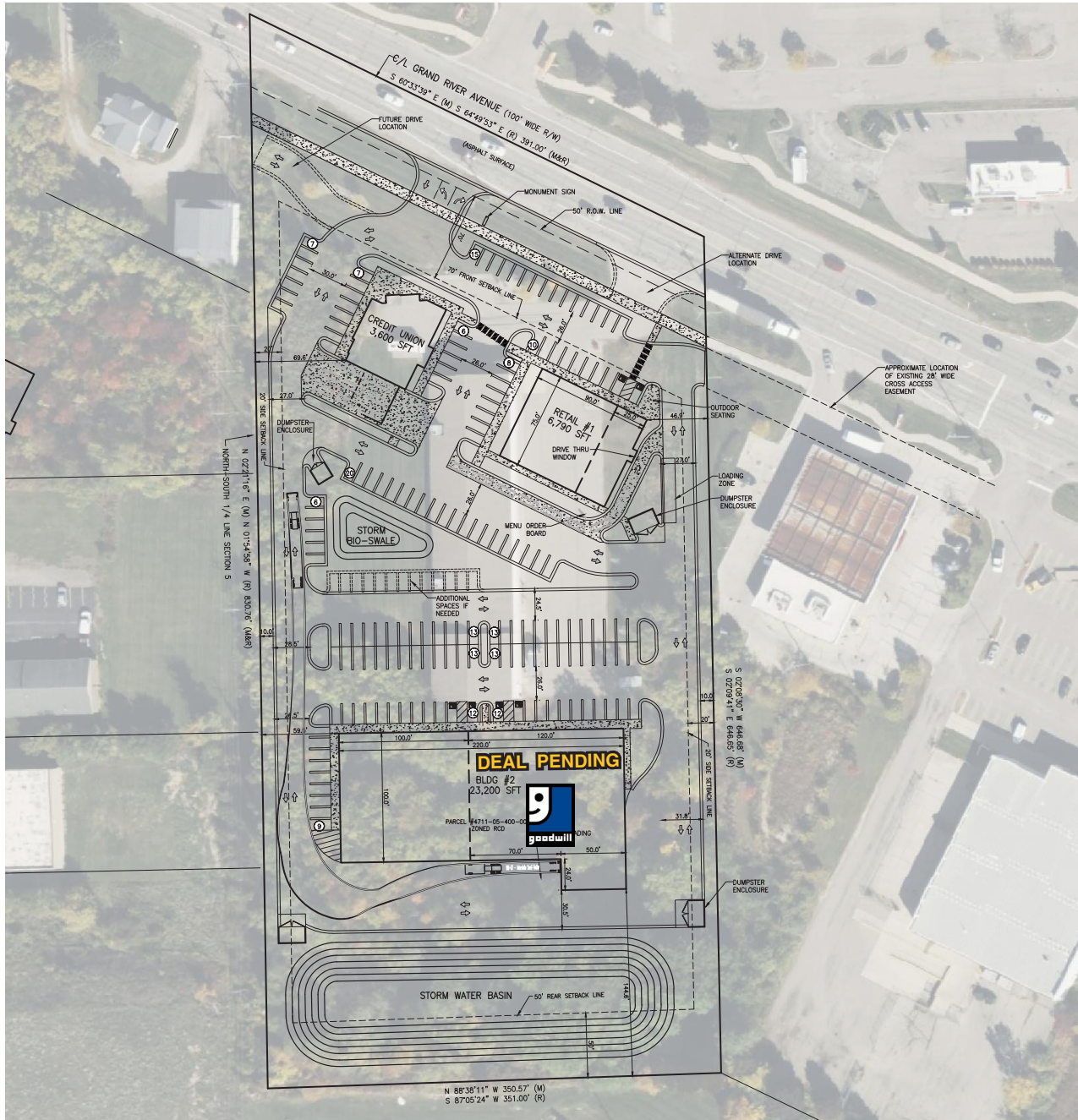
Area Tenants



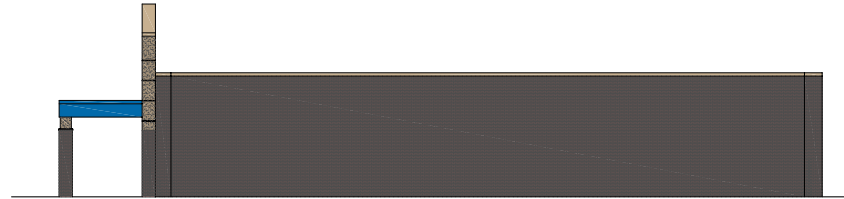
Demographics (2025)

	1 MILE	3 MILES	5 MILES
POPULATION	3,851	25,336	49,839
HOUSEHOLDS	1,807	10,570	20,619
AVG HOUSEHOLD INCOME	\$94,947	\$122,048	\$123,504
DAYTIME POPULATION	5,639	22,222	47,723

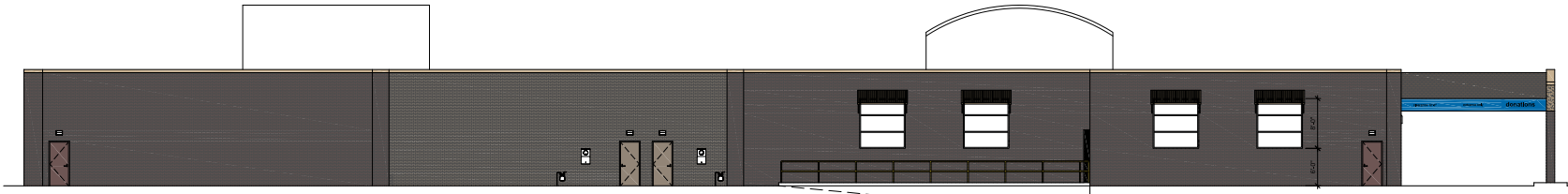
NEW DEVELOPMENT



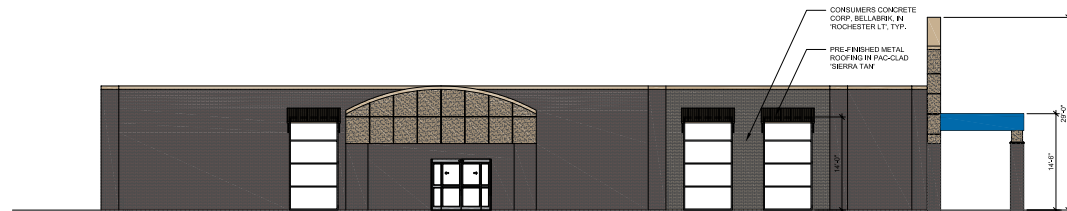
NEW DEVELOPMENT



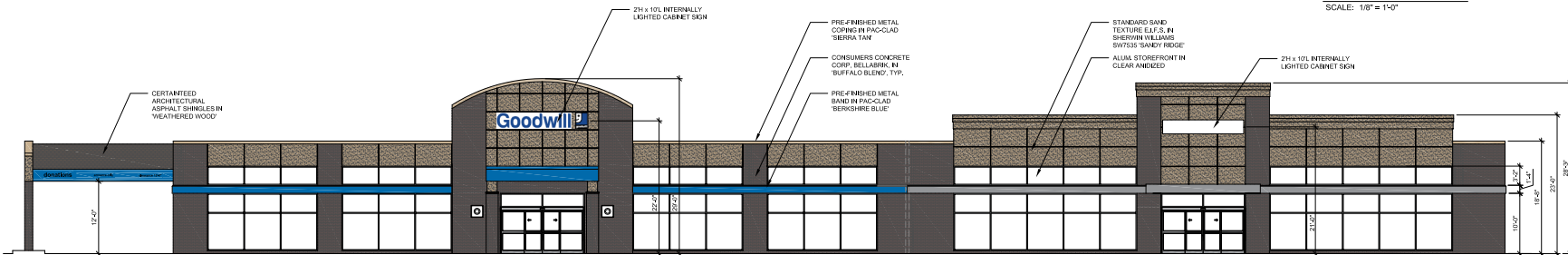
WEST ELEVATION
SCALE: 1/8" = 1'-0"



SOUTH ELEVATION
SCALE: 1/8" = 1'-0"

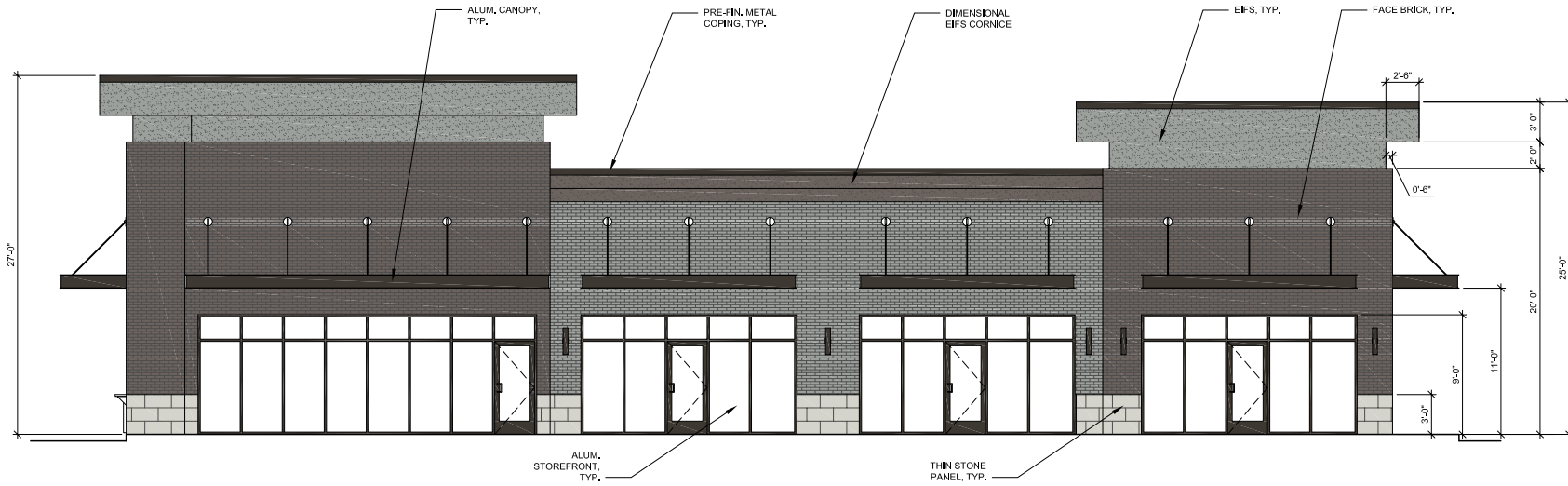


EAST ELEVATION
SCALE: 1/8" = 1'-0"



NORTH ELEVATION
SCALE: 1/8" = 1'-0"

NEW DEVELOPMENT



NORTH ELEVATION
SCALE: 3/16" = 1'-0"

