

23001-23005 GRATIOT AVE.
EASTPOINTE, MICHIGAN



**SIGNATURE
ASSOCIATES**
KNOW SIGNATURE | KNOW RESULTS

INVESTMENT SALE
8,553 Square Feet



PROPERTY FEATURES

- 8,553 square foot property
- Mixed-Use Retail/Residential
- Newer roof
- Zoned DT
- Total annual rent collected: \$100,260
 - Unit A: \$27,600
 - Unit B: \$24,000
 - Unit R1: \$11,400
 - Unit R2: \$11,100
 - Unit R4: \$15,600
- Sale Price: \$695,000 (\$81.26/sq. ft.)



For more information, please contact:

JOE STACK
(248) 359 0615
jstack@signatureassociates.com

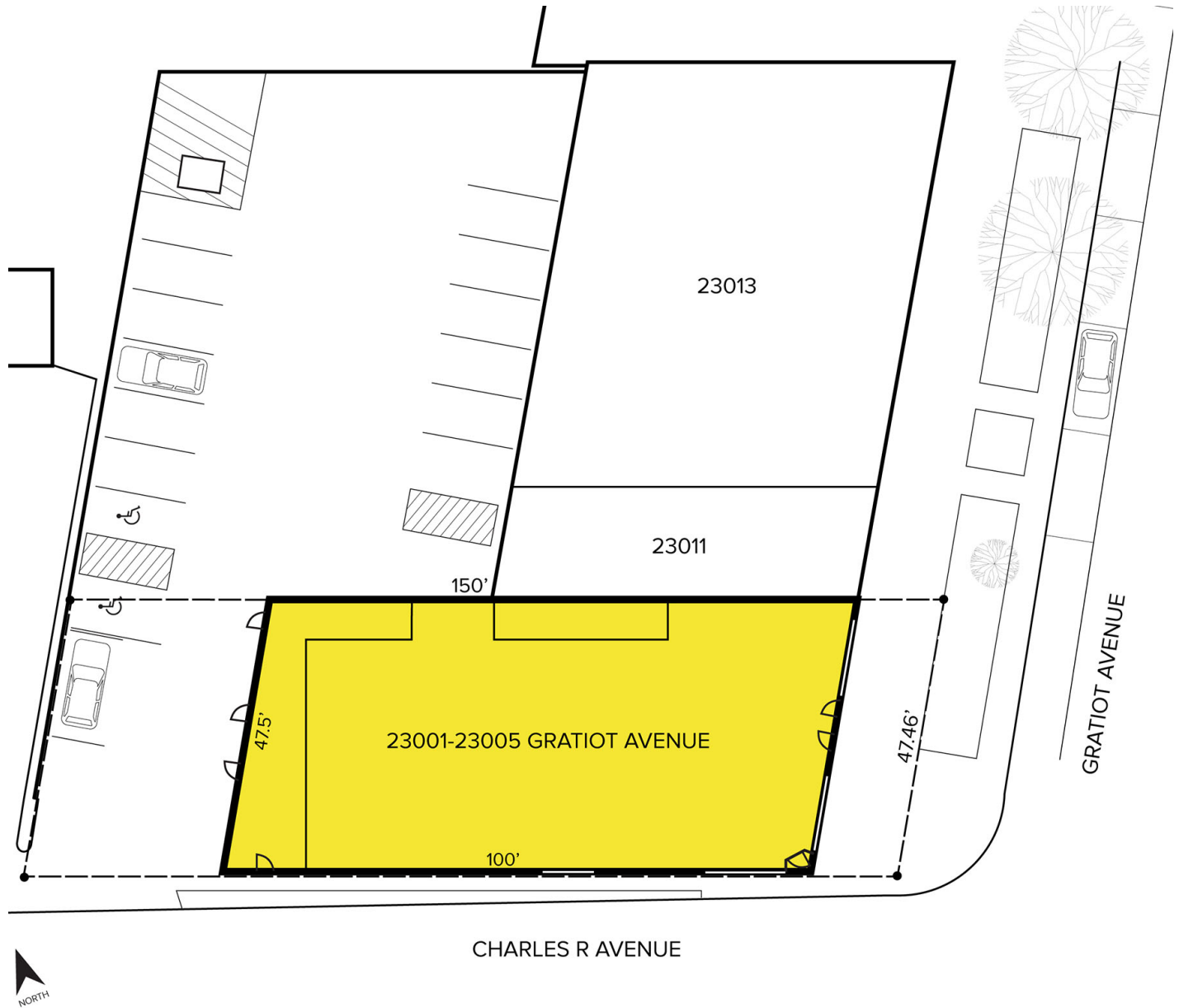
SIGNATURE ASSOCIATES
One Towne Square, Suite 1200
Southfield, MI 48076
www.signatureassociates.com

23001-23005 Gratiot Avenue – Eastpointe, Michigan

Investment Sale

8,553
Square Feet

Site Plan

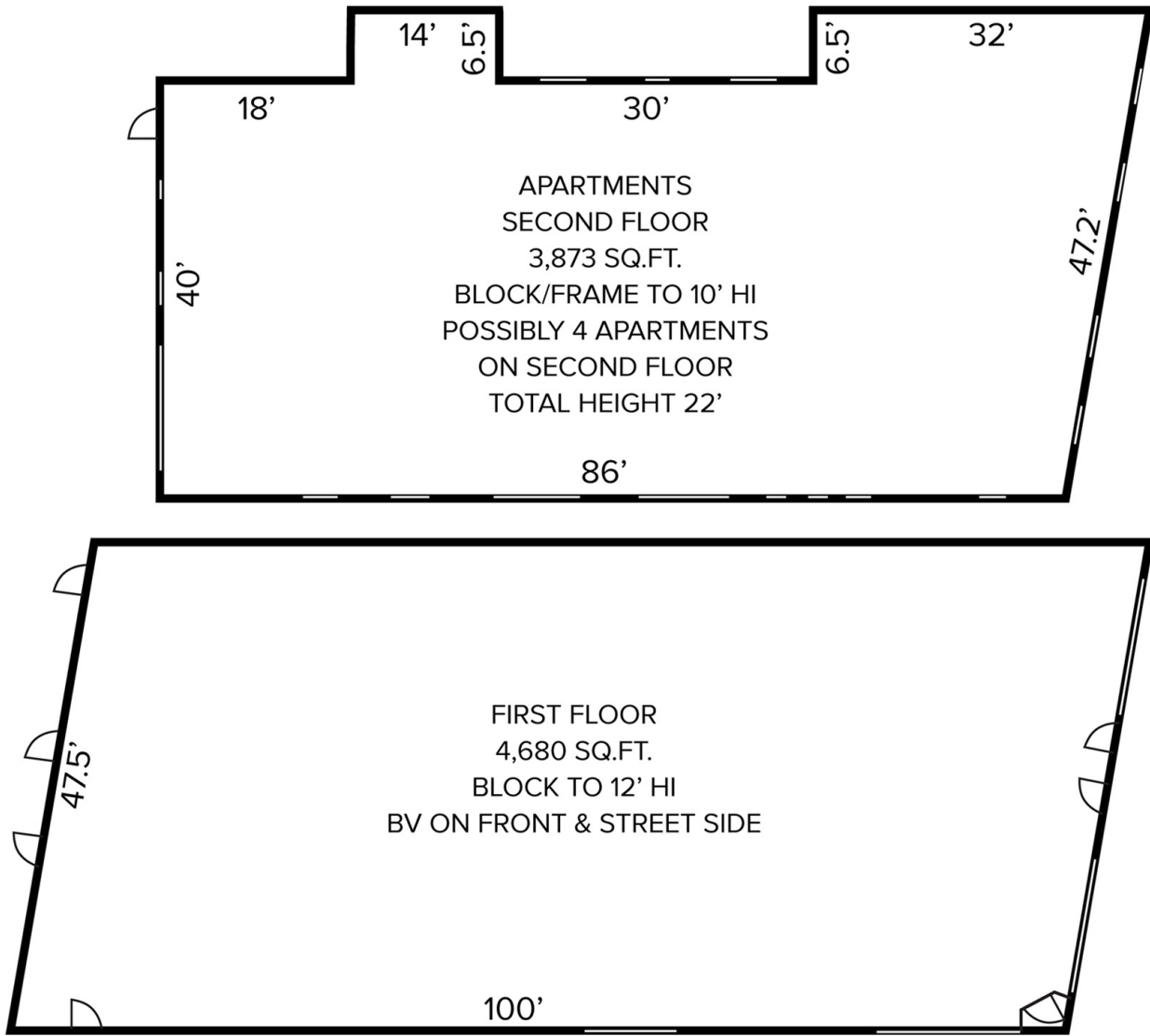


For more information, please contact:

JOE STACK
(248) 359 0615
jstack@signatureassociates.com

SIGNATURE ASSOCIATES
One Towne Square, Suite 1200
Southfield, MI 48076
www.signatureassociates.com

Floor Plan



For more information, please contact:

JOE STACK
(248) 359 0615
jstack@signatureassociates.com

SIGNATURE ASSOCIATES
One Towne Square, Suite 1200
Southfield, MI 48076
www.signatureassociates.com

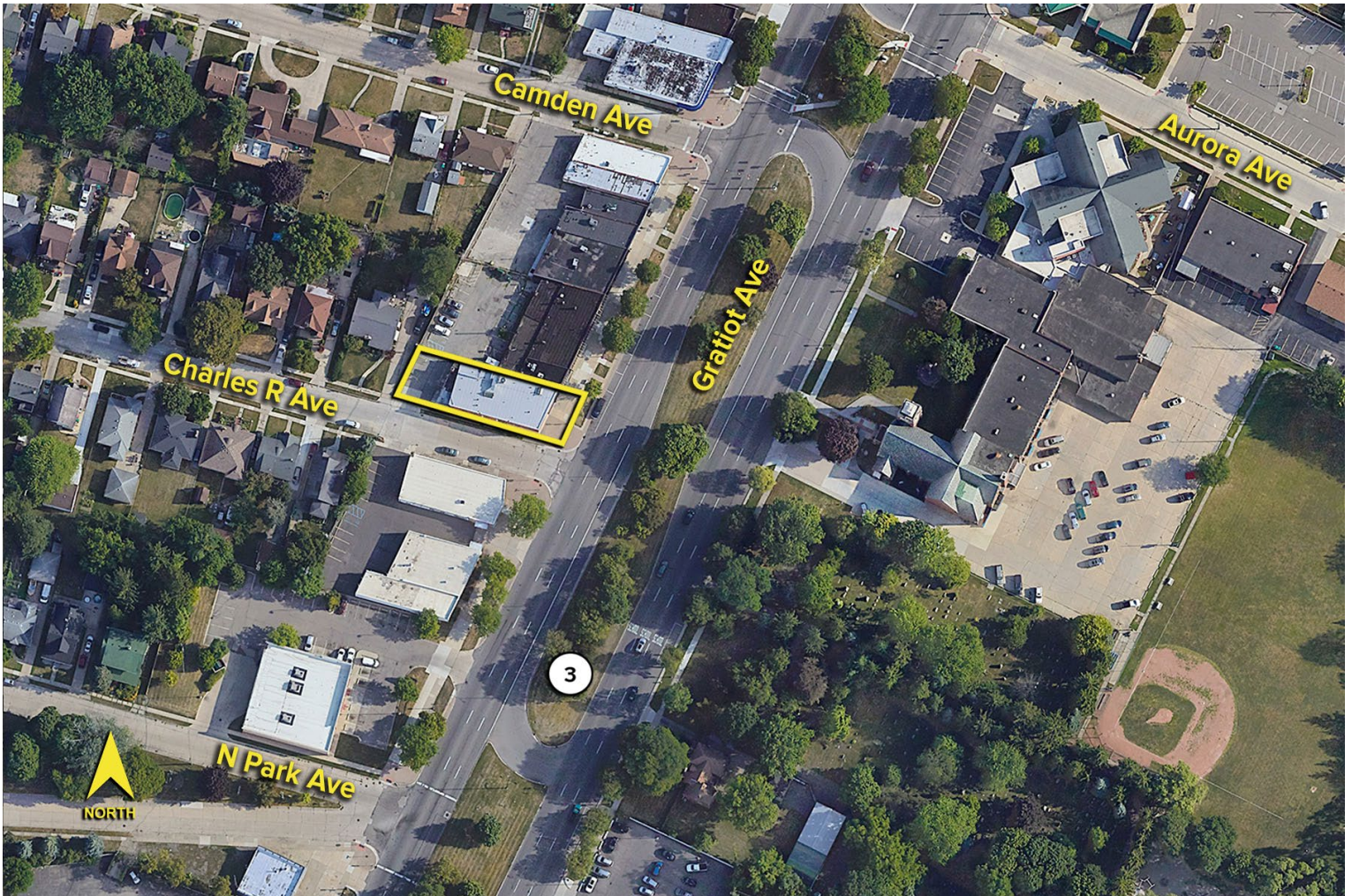
23001-23005 Gratiot Avenue – Eastpointe, Michigan

Investment Sale

8,553
Square Feet

DEMOGRAPHICS		
	POPULATION	MED. HH INCOME
1 MILE	21,993	\$59,429
3 MILE	150,805	\$61,725
5 MILE	366,898	\$66,129

TRAFFIC COUNTS (TWO-WAY)	
42,023	Gratiot Ave. N. of 9 Mile Rd.
42,930	Gratiot Ave. S. of 9 Mile Rd.
27,441	9 Mile Rd. E. of Gratiot Ave.
19,825	9 Mile Rd. W. of Gratiot Ave.



For more information, please contact:

JOE STACK
(248) 359 0615
jstack@signatureassociates.com

SIGNATURE ASSOCIATES
One Towne Square, Suite 1200
Southfield, MI 48076
www.signatureassociates.com