

3160 HAGGERTY ROAD
WEST BLOOMFIELD, MICHIGAN

INDUSTRIAL FOR LEASE
4,755 – 5,437 Square Feet Available



**SIGNATURE
ASSOCIATES**
KNOW SIGNATURE | KNOW RESULTS

WEST BLOOMFIELD TECH CENTER



PROPERTY FEATURES

- 4,755 – 5,437 square feet available
 - Suite E: 4,755 sq. ft. – 3,147 sq. ft. office
 - Suite O: 5,437 sq. ft. office/showroom
- 19' clear height
- 12' x 14' grade level door
- Frontage on Haggerty Road
- Quick access to M-5, I-696, I-96, and I-275
- Renovated in 2022
- Lease Rate: Contact Brokers



A PROPERTY BY:



For more information, please contact:

JEFF LEMANSKI
(248) 359 0641
jlemanski@signatureassociates.com

CHRISTOPHER M. D'ANGELO
(248) 948 0109
cdangelo@signatureassociates.com

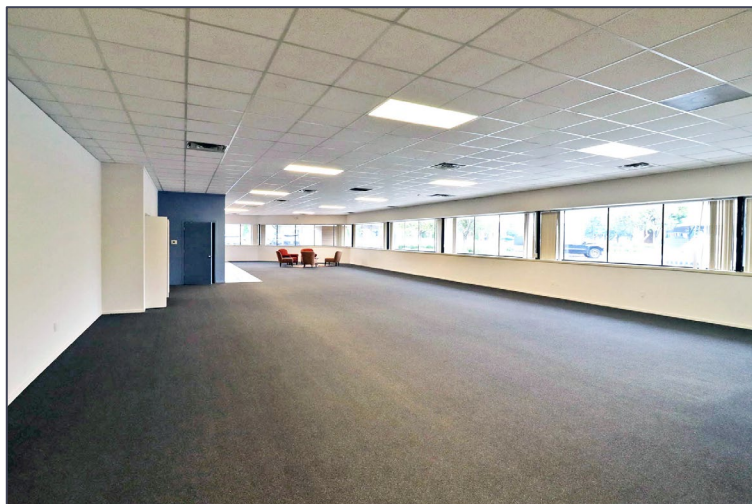
SIGNATURE ASSOCIATES
One Towne Square, Suite 1200
Southfield, MI 48076
www.signatureassociates.com

3160 Haggerty Road – West Bloomfield, Michigan

Industrial For Lease

4,755 – 5,437
Square Feet
AVAILABLE

Interior Photos



For more information, please contact:

JEFF LEMANSKI

(248) 359 0641

jlemanski@signatureassociates.com

CHRISTOPHER M. D'ANGELO

(248) 948 0109

cdangelo@signatureassociates.com

SIGNATURE ASSOCIATES

One Towne Square, Suite 1200

Southfield, MI 48076

www.signatureassociates.com

Information is subject to verification and no liability for errors or omissions is assumed. Price is subject to change and listing withdrawal.

3160 Haggerty Road – West Bloomfield, Michigan

Industrial For Lease

4,755 – 5,437
Square Feet
AVAILABLE

Exterior Photos



For more information, please contact:

JEFF LEMANSKI

(248) 359 0641

jlemanski@signatureassociates.com

CHRISTOPHER M. D'ANGELO

(248) 948 0109

cdangelo@signatureassociates.com

SIGNATURE ASSOCIATES

One Towne Square, Suite 1200

Southfield, MI 48076

www.signatureassociates.com

Information is subject to verification and no liability for errors or omissions is assumed. Price is subject to change and listing withdrawal.

3160 Haggerty Road – West Bloomfield, Michigan

Industrial For Lease

4,755 – 5,437
Square Feet
AVAILABLE

Exterior Photos



For more information, please contact:

JEFF LEMANSKI

(248) 359 0641

jlemanski@signatureassociates.com

CHRISTOPHER M. D'ANGELO

(248) 948 0109

cdangelo@signatureassociates.com

SIGNATURE ASSOCIATES

One Towne Square, Suite 1200

Southfield, MI 48076

www.signatureassociates.com

Information is subject to verification and no liability for errors or omissions is assumed. Price is subject to change and listing withdrawal.

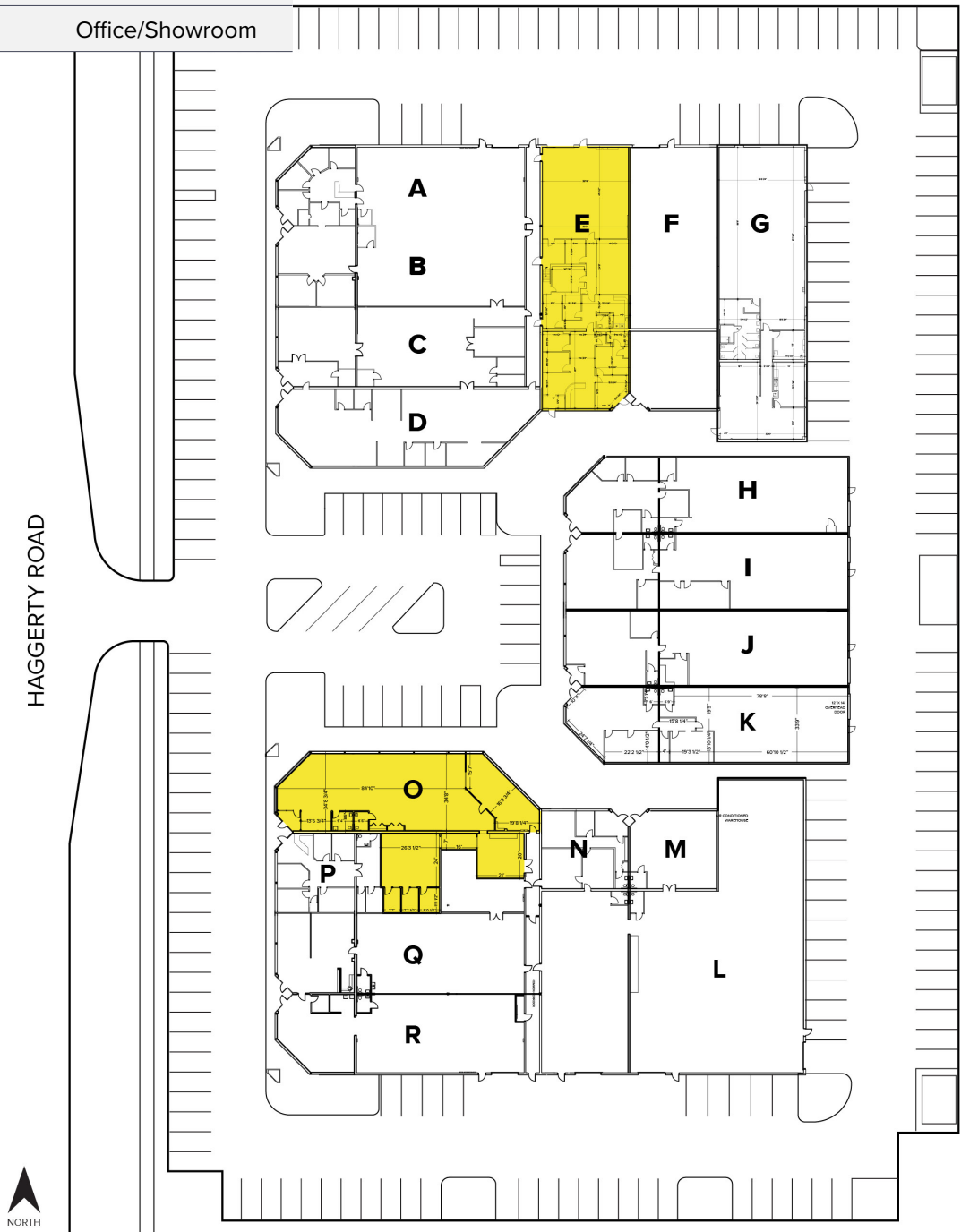
3160 Haggerty Road – West Bloomfield, Michigan

Industrial For Lease

4,755 – 5,437
Square Feet
AVAILABLE

Site Plan

AVAILABILITY		
SUITE	TOTAL SF	OFFICE SF
E	4,755	3,147
O	5,437	Office/Showroom



For more information, please contact:

JEFF LEMANSKI
(248) 359 0641
jlemanski@signatureassociates.com

CHRISTOPHER M. D'ANGELO
(248) 948 0109
cdangelo@signatureassociates.com

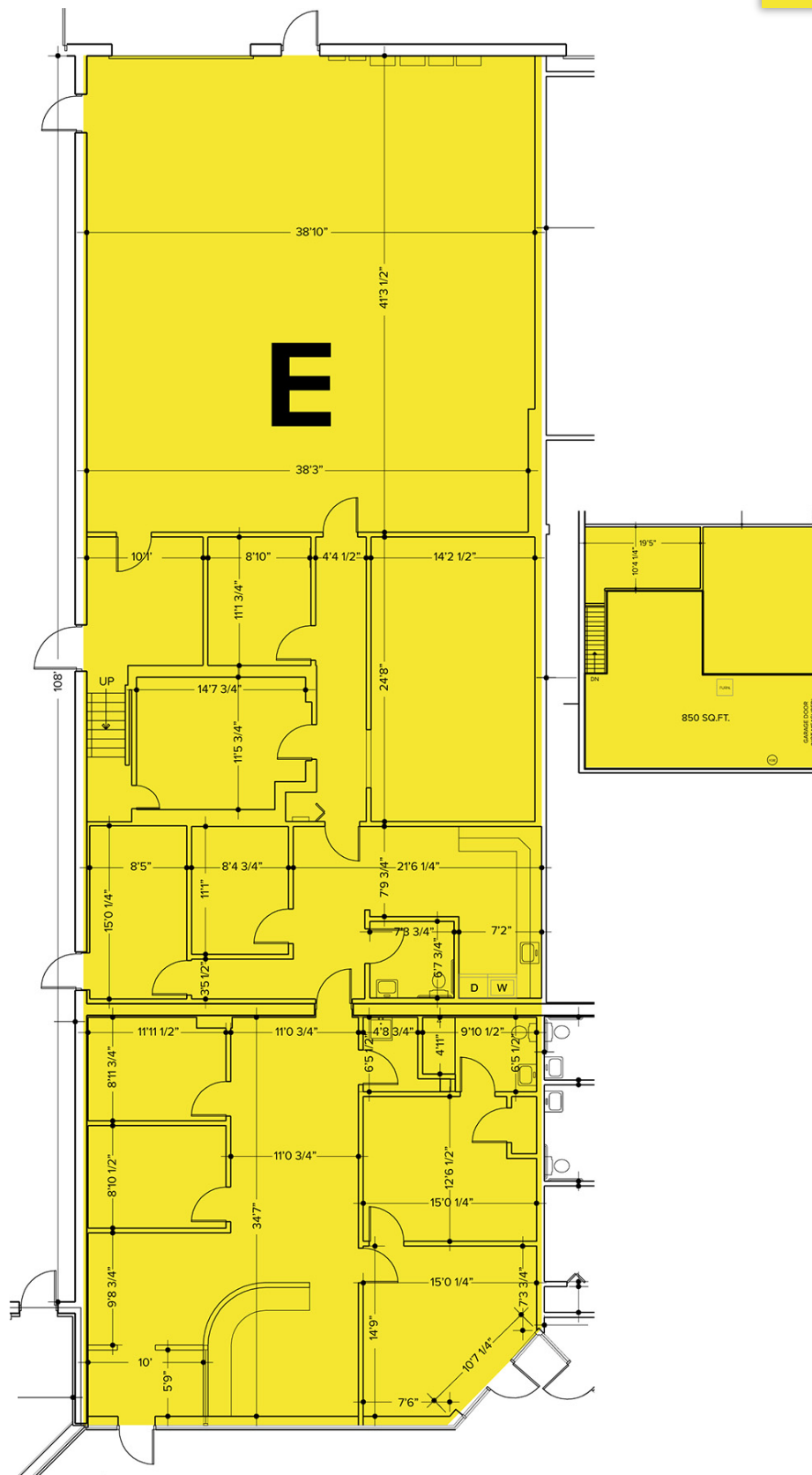
SIGNATURE ASSOCIATES
One Towne Square, Suite 1200
Southfield, MI 48076
www.signatureassociates.com

3160 Haggerty Road – West Bloomfield, Michigan

Industrial For Lease

4,755 – 5,437
Square Feet
AVAILABLE

Floor Plan



For more information, please contact:

JEFF LEMANSKI

(248) 359 0641

jlemanski@signatureassociates.com

CHRISTOPHER M. D'ANGELO

(248) 948 0109

cdangelo@signatureassociates.com

SIGNATURE ASSOCIATES

One Towne Square, Suite 1200

Southfield, MI 48076

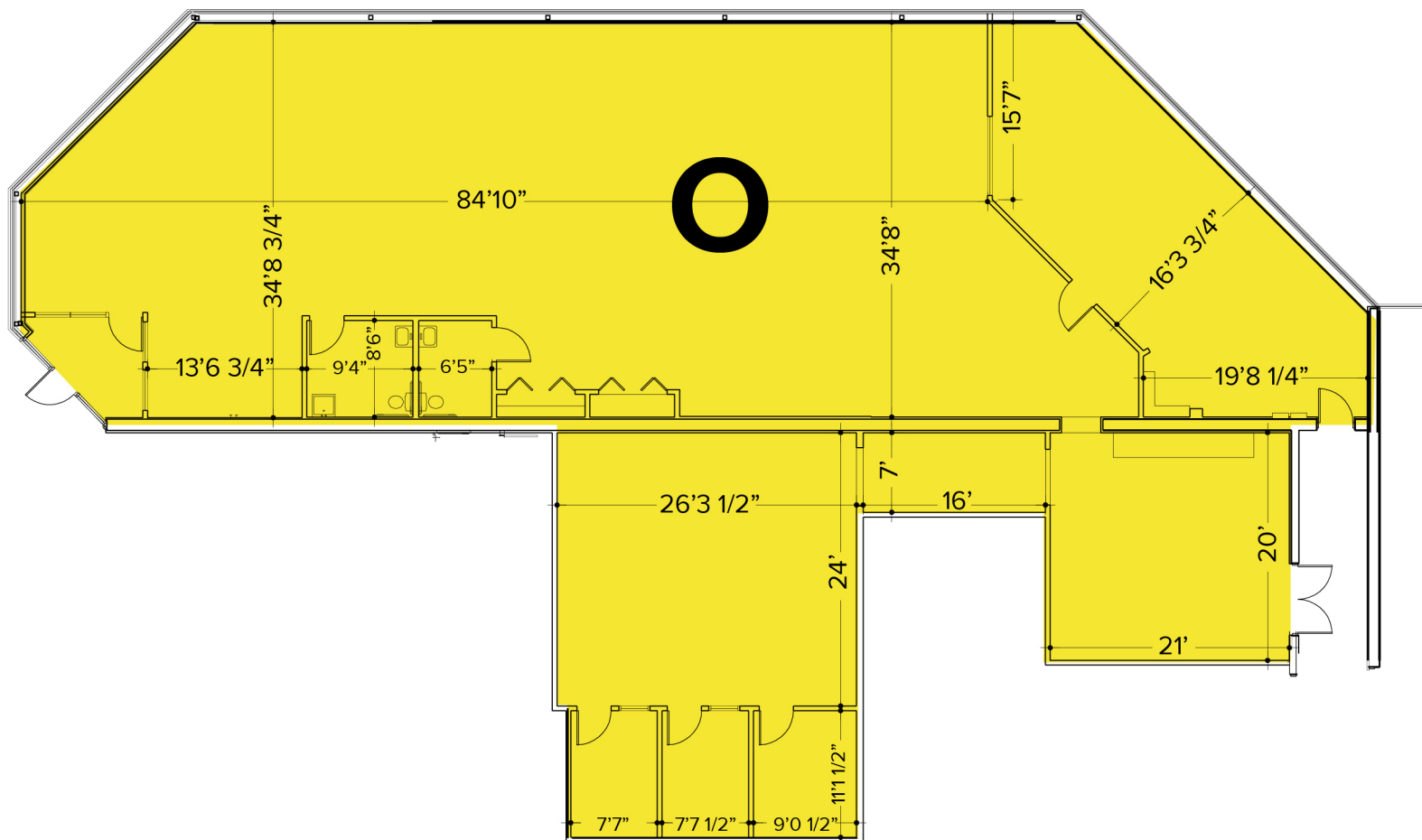
www.signatureassociates.com

3160 Haggerty Road – West Bloomfield, Michigan

Industrial For Lease

4,755 – 5,437
Square Feet
AVAILABLE

Floor Plan



For more information, please contact:

JEFF LEMANSKI

(248) 359 0641

jlemanski@signatureassociates.com

CHRISTOPHER M. D'ANGELO

(248) 948 0109

cdangelo@signatureassociates.com

SIGNATURE ASSOCIATES

One Towne Square, Suite 1200

Southfield, MI 48076

www.signatureassociates.com

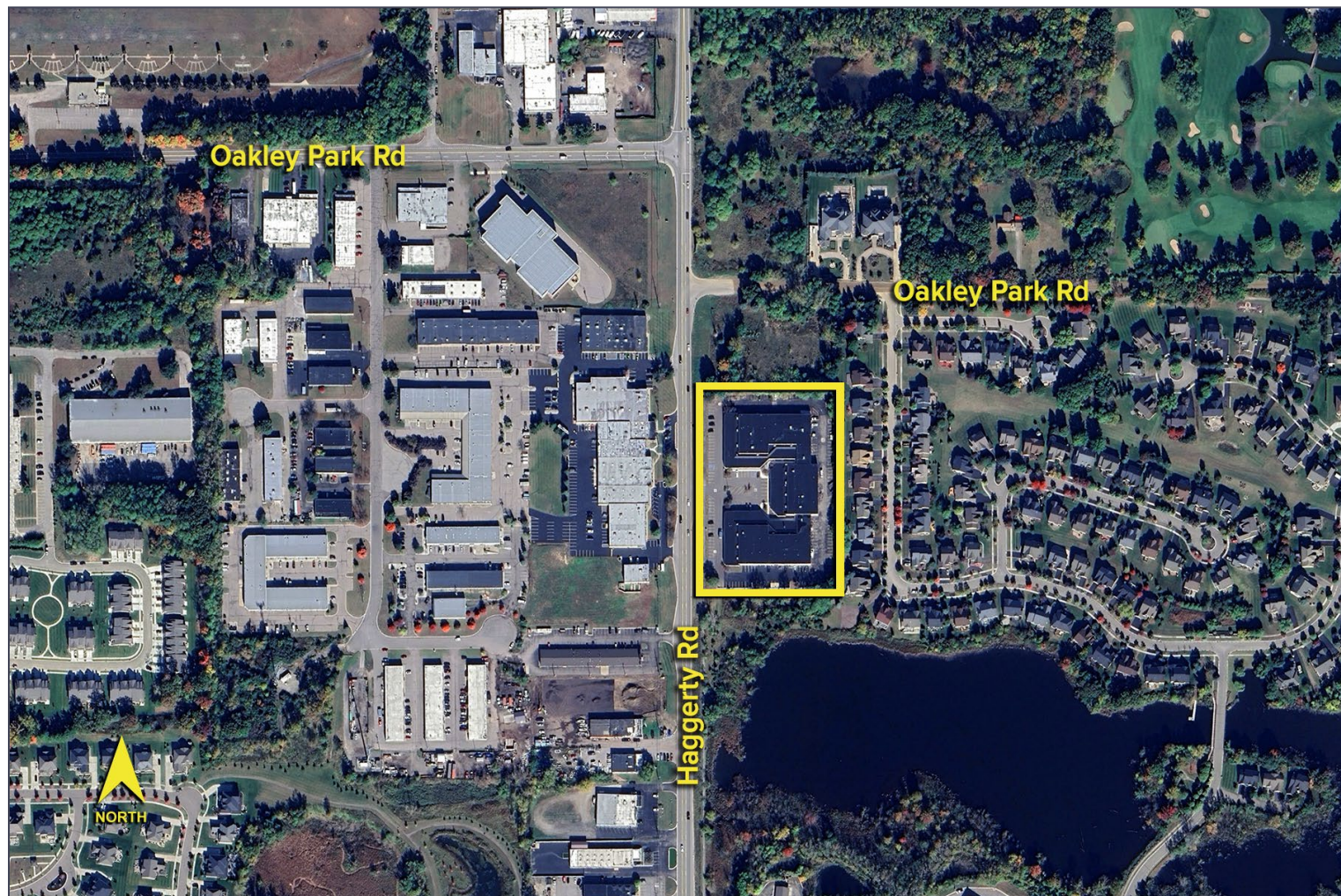
Information is subject to verification and no liability for errors or omissions is assumed. Price is subject to change and listing withdrawal.

3160 Haggerty Road – West Bloomfield, Michigan

Industrial For Lease

4,755 – 5,437
Square Feet
AVAILABLE

Aerial



For more information, please contact:

JEFF LEMANSKI

(248) 359 0641

jlemanski@signatureassociates.com

CHRISTOPHER M. D'ANGELO

(248) 948 0109

cdangelo@signatureassociates.com

SIGNATURE ASSOCIATES

One Towne Square, Suite 1200

Southfield, MI 48076

www.signatureassociates.com

Information is subject to verification and no liability for errors or omissions is assumed. Price is subject to change and listing withdrawal.