

# FOR LEASE

MULTI-TENANT

Industrial – Commerce Twp.

**Insite**  
COMMERCIAL

Established 2001

2019 Township Drive  
Suite 104  
Commerce, MI 48390



1145 Rig Street  
Commerce, MI 48390

Kyle Nelson  
Vice President  
C: (313) 467-2597  
O: (248) 359-9000 x5  
[knelson@insitecommercial.com](mailto:knelson@insitecommercial.com)

Randy Thomas  
CEO/President  
C: (248) 891-5050  
O: (248) 359-9000 x9  
[rthomas@insitecommercial.com](mailto:rthomas@insitecommercial.com)

(248) 359-9000  
[www.insitecommercial.com](http://www.insitecommercial.com)



## PROPERTY INFORMATION

Executive Summary	page 3
Photographs	pages 4-7
Building Plans	pages 8-12

## LOCATION INFORMATION

Location Maps	page 13
Aerial Maps	page 14
Demographics	pages 15-17
Traffic Counts	page 18



**PROPERTY OVERVIEW**

Office/warehouse space for lease in industrial park off Ladd Road in Commerce Township, with easily accessible to Maple Road, M-5 and I-96. The available space includes the front office (+/-400 SF) and the first warehouse bay connected to the office (+/-1500 SF). Space has own restroom and grade level door. Includes security and fire alarm system as well. Electrical and paint recently updated and new 12 x 12 overhead

<b>OFFERING SUMMARY</b>	
<b>Lease Rate:</b>	<b>\$2,500/mo. + electrical and janitorial</b>
<b>Available Space:</b>	<b>Total: +/- 1,900 SF Office: 400 SF</b>
<b>Total Building Size:</b>	<b>5,965 SF</b>
<b>Outside Storage:</b>	<b>Contact Broker</b>
<b>Year Built:</b>	<b>1986</b>
<b>Loading Doors:</b>	<b>One (12x12) Drive-in</b>
<b>Clear Height:</b>	<b>12'</b>
<b>Amps/Volts:</b>	<b>600 amp – 3 phase</b>

**DEMOGRAPHICS (5-Mile Radius)**

- **Population:** 134,462 people
- **Households:** 57,433 homes
- **Avg. HH Income:** \$136,267 USD

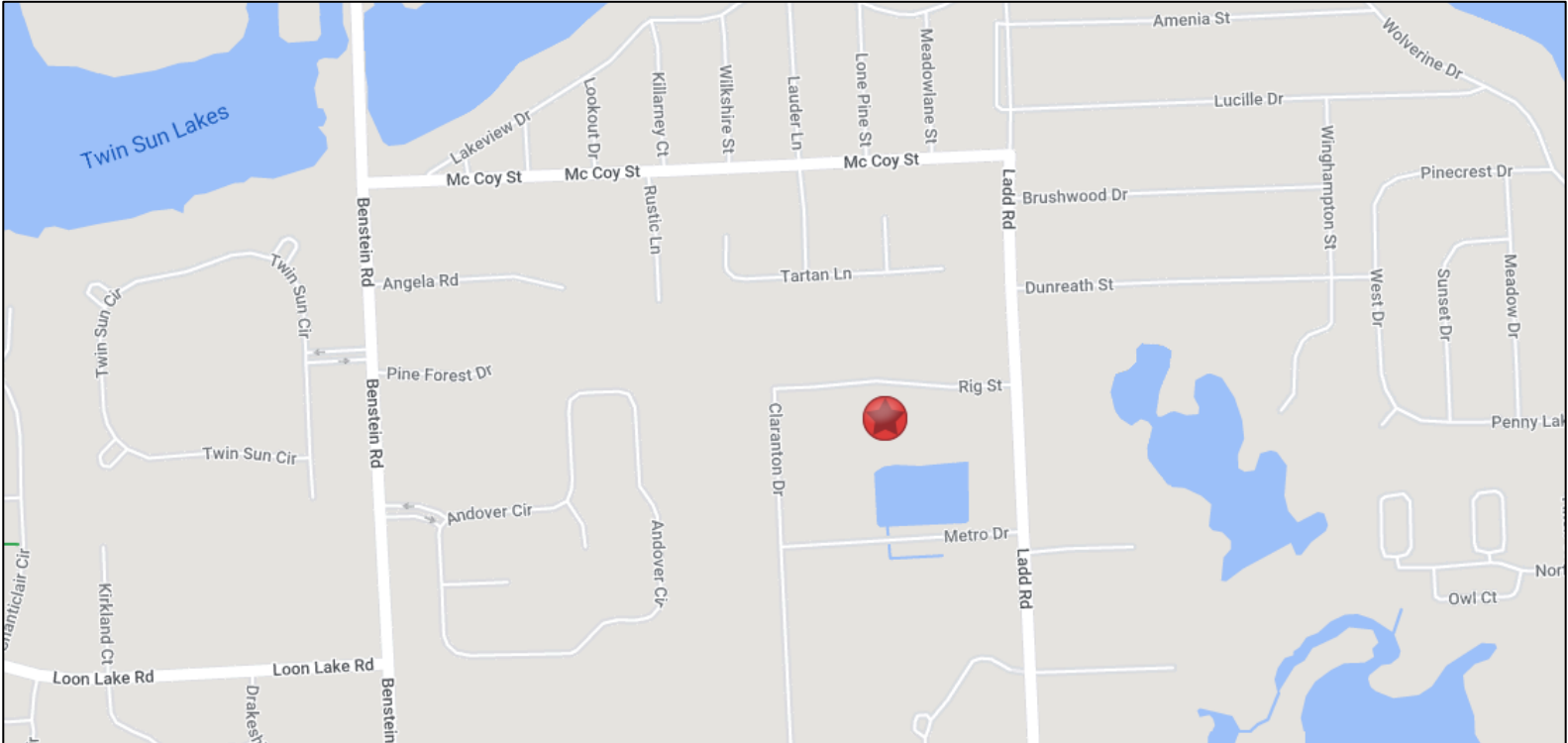


# PROPERTY INFORMATION

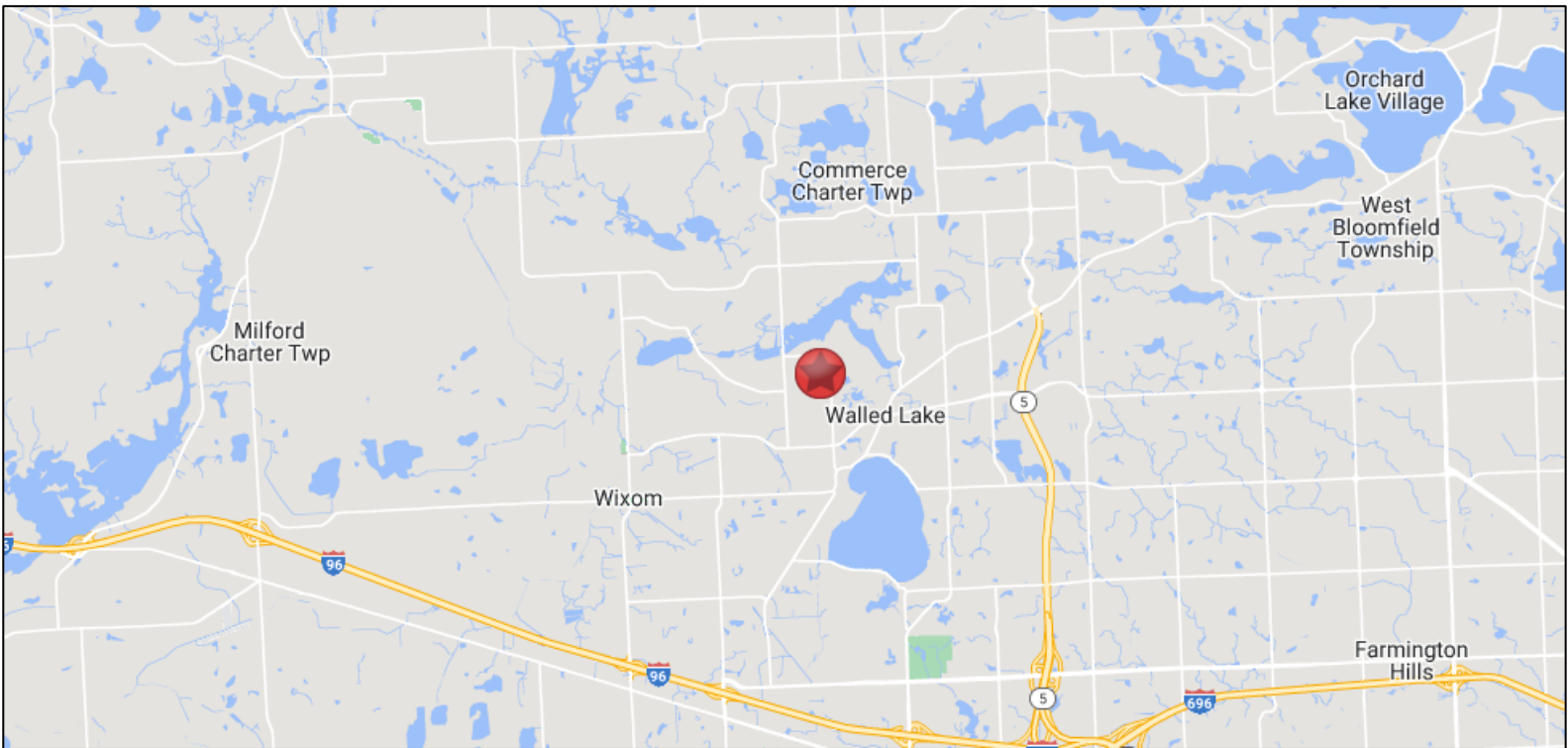
## Warehouse Plan



### LOCAL



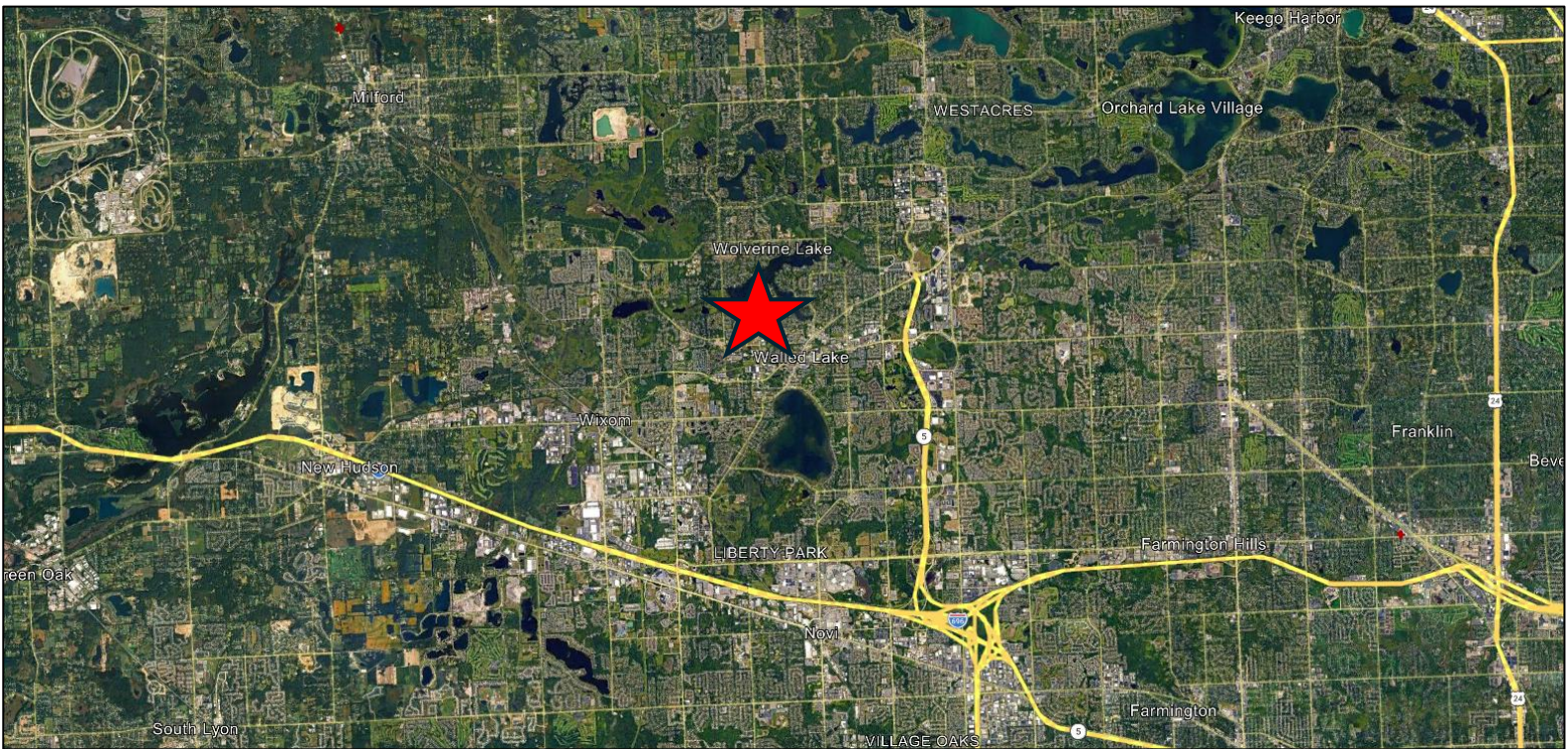
### REGIONAL



### LOCAL



### REGIONAL



1145 Rig St Commerce, MI 48390	1 mi radius	3 mi radius	5 mi radius
<b>Population</b>			
2025 Estimated Population	7,076	64,279	134,462
2030 Projected Population	7,234	65,597	135,290
2020 Census Population	6,969	61,356	130,001
2010 Census Population	6,640	52,877	114,672
Projected Annual Growth 2025 to 2030	0.4%	0.4%	0.1%
Historical Annual Growth 2010 to 2025	0.4%	1.4%	1.2%
<b>Households</b>			
2025 Estimated Households	3,040	29,982	57,433
2030 Projected Households	3,161	30,976	58,738
2020 Census Households	2,902	27,867	54,273
2010 Census Households	2,750	22,681	46,063
Projected Annual Growth 2025 to 2030	0.8%	0.7%	0.5%
Historical Annual Growth 2010 to 2025	0.7%	2.1%	1.6%
<b>Age</b>			
2025 Est. Population Under 10 Years	10.1%	10.6%	10.7%
2025 Est. Population 10 to 19 Years	11.2%	10.2%	11.1%
2025 Est. Population 20 to 29 Years	11.4%	13.9%	12.2%
2025 Est. Population 30 to 44 Years	20.4%	21.7%	20.6%
2025 Est. Population 45 to 59 Years	19.9%	18.4%	19.2%
2025 Est. Population 60 to 74 Years	19.0%	16.5%	17.5%
2025 Est. Population 75 Years or Over	8.0%	8.7%	8.7%
2025 Est. Median Age	42.0	40.9	42.1
<b>Marital Status &amp; Gender</b>			
2025 Est. Male Population	49.3%	49.2%	49.1%
2025 Est. Female Population	50.7%	50.8%	50.9%
2025 Est. Never Married	33.8%	33.1%	29.9%
2025 Est. Now Married	46.3%	47.3%	52.0%
2025 Est. Separated or Divorced	16.1%	14.6%	13.3%
2025 Est. Widowed	3.7%	5.1%	4.9%
<b>Income</b>			
2025 Est. HH Income \$200,000 or More	14.4%	13.1%	19.3%
2025 Est. HH Income \$150,000 to \$199,999	14.7%	9.7%	11.3%
2025 Est. HH Income \$100,000 to \$149,999	20.3%	18.3%	18.3%
2025 Est. HH Income \$75,000 to \$99,999	7.9%	13.9%	12.5%
2025 Est. HH Income \$50,000 to \$74,999	17.2%	17.0%	14.0%
2025 Est. HH Income \$35,000 to \$49,999	7.2%	9.8%	8.1%
2025 Est. HH Income \$25,000 to \$34,999	4.8%	6.7%	5.9%
2025 Est. HH Income \$15,000 to \$24,999	6.8%	5.6%	4.9%
2025 Est. HH Income Under \$15,000	6.6%	5.9%	5.7%
2025 Est. Average Household Income	\$133,855	\$113,730	\$136,267
2025 Est. Median Household Income	\$99,295	\$91,063	\$108,118
2025 Est. Per Capita Income	\$57,504	\$53,068	\$58,249
2025 Est. Total Businesses	265	2,181	6,290
2025 Est. Total Employees	2,534	31,089	96,050

1145 Rig St Commerce, MI 48390	1 mi radius	3 mi radius	5 mi radius
<b>Race</b>			
2025 Est. White	81.7%	73.8%	72.0%
2025 Est. Black	6.5%	10.1%	10.3%
2025 Est. Asian or Pacific Islander	6.5%	10.0%	12.2%
2025 Est. American Indian or Alaska Native	0.2%	0.2%	0.2%
2025 Est. Other Races	5.2%	6.0%	5.4%
<b>Hispanic</b>			
2025 Est. Hispanic Population	349	3,519	6,235
2025 Est. Hispanic Population	4.9%	5.5%	4.6%
2030 Proj. Hispanic Population	5.6%	6.1%	5.2%
2020 Hispanic Population	4.4%	6.1%	4.7%
<b>Education (Adults 25 &amp; Older)</b>			
2025 Est. Adult Population (25 Years or Over)	5,172	46,995	97,408
2025 Est. Elementary (Grade Level 0 to 8)	1.6%	1.9%	1.9%
2025 Est. Some High School (Grade Level 9 to 11)	2.9%	2.8%	2.5%
2025 Est. High School Graduate	23.4%	18.8%	17.1%
2025 Est. Some College	21.1%	22.2%	19.7%
2025 Est. Associate Degree Only	7.5%	9.6%	8.8%
2025 Est. Bachelor Degree Only	28.8%	28.3%	29.5%
2025 Est. Graduate Degree	14.7%	16.4%	20.5%
<b>Housing</b>			
2025 Est. Total Housing Units	3,167	31,204	59,913
2025 Est. Owner-Occupied	67.2%	55.6%	63.5%
2025 Est. Renter-Occupied	28.8%	40.4%	32.4%
2025 Est. Vacant Housing	4.0%	3.9%	4.1%
<b>Homes Built by Year</b>			
2025 Homes Built 2010 or later	7.0%	10.8%	11.0%
2025 Homes Built 2000 to 2009	20.5%	16.0%	15.3%
2025 Homes Built 1990 to 1999	18.5%	21.1%	21.0%
2025 Homes Built 1980 to 1989	7.7%	13.4%	16.4%
2025 Homes Built 1970 to 1979	18.5%	15.5%	14.4%
2025 Homes Built 1960 to 1969	8.6%	7.8%	6.9%
2025 Homes Built 1950 to 1959	9.5%	7.0%	6.2%
2025 Homes Built Before 1949	5.8%	4.4%	4.8%
<b>Home Values</b>			
2025 Home Value \$1,000,000 or More	2.1%	1.6%	2.1%
2025 Home Value \$500,000 to \$999,999	9.2%	13.0%	21.6%
2025 Home Value \$400,000 to \$499,999	18.0%	13.7%	17.5%
2025 Home Value \$300,000 to \$399,999	21.9%	26.3%	22.9%
2025 Home Value \$200,000 to \$299,999	31.3%	25.3%	20.1%
2025 Home Value \$150,000 to \$199,999	9.1%	7.8%	5.5%
2025 Home Value \$100,000 to \$149,999	3.2%	2.7%	2.1%
2025 Home Value \$50,000 to \$99,999	1.1%	2.0%	2.1%
2025 Home Value \$25,000 to \$49,999	1.0%	2.0%	2.0%
2025 Home Value Under \$25,000	3.1%	5.5%	4.0%
2025 Median Home Value	\$301,968	\$308,633	\$352,921
2025 Median Rent	\$1,239	\$1,231	\$1,310

1145 Rig St Commerce, MI 48390	1 mi radius	3 mi radius	5 mi radius
<b>Labor Force</b>			
2025 Est. Labor Population Age 16 Years or Over	5,895	53,574	111,094
2025 Est. Civilian Employed	68.6%	68.9%	65.8%
2025 Est. Civilian Unemployed	2.4%	2.5%	2.8%
2025 Est. in Armed Forces	-	-	-
2025 Est. not in Labor Force	29.0%	28.6%	31.3%
2025 Labor Force Males	49.0%	48.7%	48.7%
2025 Labor Force Females	51.0%	51.3%	51.3%
<b>Occupation</b>			
2025 Occupation: Population Age 16 Years or Over	4,044	36,893	73,112
2025 Mgmt, Business, & Financial Operations	21.2%	21.8%	23.2%
2025 Professional, Related	26.1%	28.9%	30.1%
2025 Service	10.2%	13.2%	12.6%
2025 Sales, Office	24.5%	20.0%	19.9%
2025 Farming, Fishing, Forestry	0.4%	0.3%	0.2%
2025 Construction, Extraction, Maintenance	5.6%	4.5%	4.2%
2025 Production, Transport, Material Moving	12.0%	11.3%	9.8%
2025 White Collar Workers	71.7%	70.7%	73.2%
2025 Blue Collar Workers	28.3%	29.3%	26.8%
<b>Transportation to Work</b>			
2025 Drive to Work Alone	74.1%	77.3%	74.5%
2025 Drive to Work in Carpool	7.5%	7.1%	6.9%
2025 Travel to Work by Public Transportation	0.2%	0.3%	0.3%
2025 Drive to Work on Motorcycle	-	-	-
2025 Walk or Bicycle to Work	1.5%	1.8%	1.6%
2025 Other Means	0.3%	0.6%	0.5%
2025 Work at Home	16.4%	12.9%	16.1%
<b>Travel Time</b>			
2025 Travel to Work in 14 Minutes or Less	25.4%	23.8%	21.4%
2025 Travel to Work in 15 to 29 Minutes	38.0%	36.9%	35.6%
2025 Travel to Work in 30 to 59 Minutes	32.9%	34.1%	37.4%
2025 Travel to Work in 60 Minutes or More	3.6%	5.2%	5.5%
2025 Average Travel Time to Work	23.0	24.1	25.6
<b>Consumer Expenditure</b>			
2025 Est. Total Household Expenditure	\$336.67 M	\$3.12 B	\$6.68 B
2025 Est. Apparel	\$6.16 M	\$57.2 M	\$122.02 M
2025 Est. Contributions, Tax and Retirement	\$101.39 M	\$917.15 M	\$2.08 B
2025 Est. Education	\$7.87 M	\$72.64 M	\$157 M
2025 Est. Entertainment	\$19.03 M	\$176.8 M	\$376.55 M
2025 Est. Food, Beverages, Tobacco	\$38.27 M	\$358.07 M	\$749.74 M
2025 Est. Health Care	\$20.44 M	\$194.78 M	\$383.09 M
2025 Est. Household Furnishings and Equipment	\$8.95 M	\$83.02 M	\$177.64 M
2025 Est. Household Operations, Shelter, Utilities	\$71.87 M	\$683.63 M	\$1.42 B
2025 Est. Miscellaneous Expenses	\$5.75 M	\$53.41 M	\$113.67 M
2025 Est. Personal Care	\$4.04 M	\$37.86 M	\$79.01 M
2025 Est. Transportation	\$52.9 M	\$482.01 M	\$1.02 B