

36917-36955 SCHOOLCRAFT
LIVONIA, MICHIGAN

HI-TECH FOR LEASE
1,250 – 2,680 Square Feet Available



**SIGNATURE
ASSOCIATES**
KNOW SIGNATURE | KNOW RESULTS

LIVONIA TECHNOLOGY CENTER



PROPERTY FEATURES

- 1,250, 1,840 and 2,680 square foot suites available
- Complex professionally managed by Signature Associates
- Located just east of Newburgh Road and with easy access to I-96 & I-275
- Multiple office/shop configurations available and units have been recently renovated or can be finished to suit
- Aggressive lease rates



For more information, please contact:

CHRIS D'ANGELO
(248) 948 0109
cdangelo@signatureassociates.com

JASON STOUGH
(248) 948 4180
jstough@signatureassociates.com

SIGNATURE ASSOCIATES
One Towne Square, Suite 1200
Southfield, MI 48076
www.signatureassociates.com

36917-36955 Schoolcraft Road - Livonia, Michigan

Hi-Tech For Lease

1,250 – 2,680
Square Feet
AVAILABLE

Site Plan

SCHOOLCRAFT ROAD

AVAILABILITY

UNIT	TOTAL SF	OFFICE SF	RATE
36917	2,680	To Suit	\$13.70 G+U
36933	1,840	1,472	\$13.70 G+U
36955	1,250	875	\$13.70 G+U



For more information, please contact:

CHRIS D'ANGELO
(248) 948 0109
cdangelo@signatureassociates.com

JASON STOUGH
(248) 948 4180
jstough@signatureassociates.com

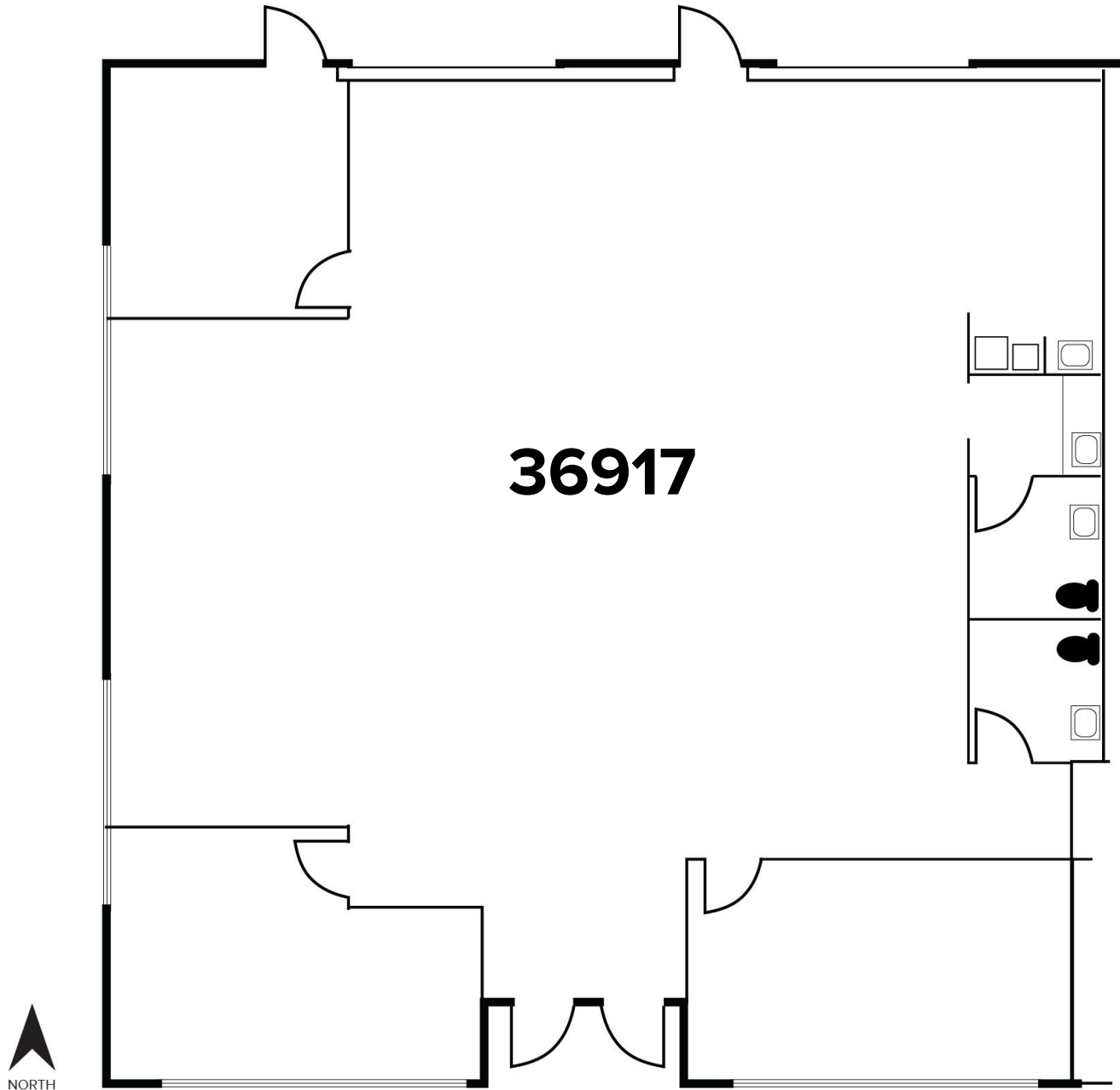
SIGNATURE ASSOCIATES
One Towne Square, Suite 1200
Southfield, MI 48076
www.signatureassociates.com

36917-36955 Schoolcraft Road - Livonia, Michigan

Hi-Tech For Lease

1,250 – 2,680
Square Feet
AVAILABLE

Floor Plan



For more information, please contact:

CHRIS D'ANGELO
(248) 948 0109
cdangelo@signatureassociates.com

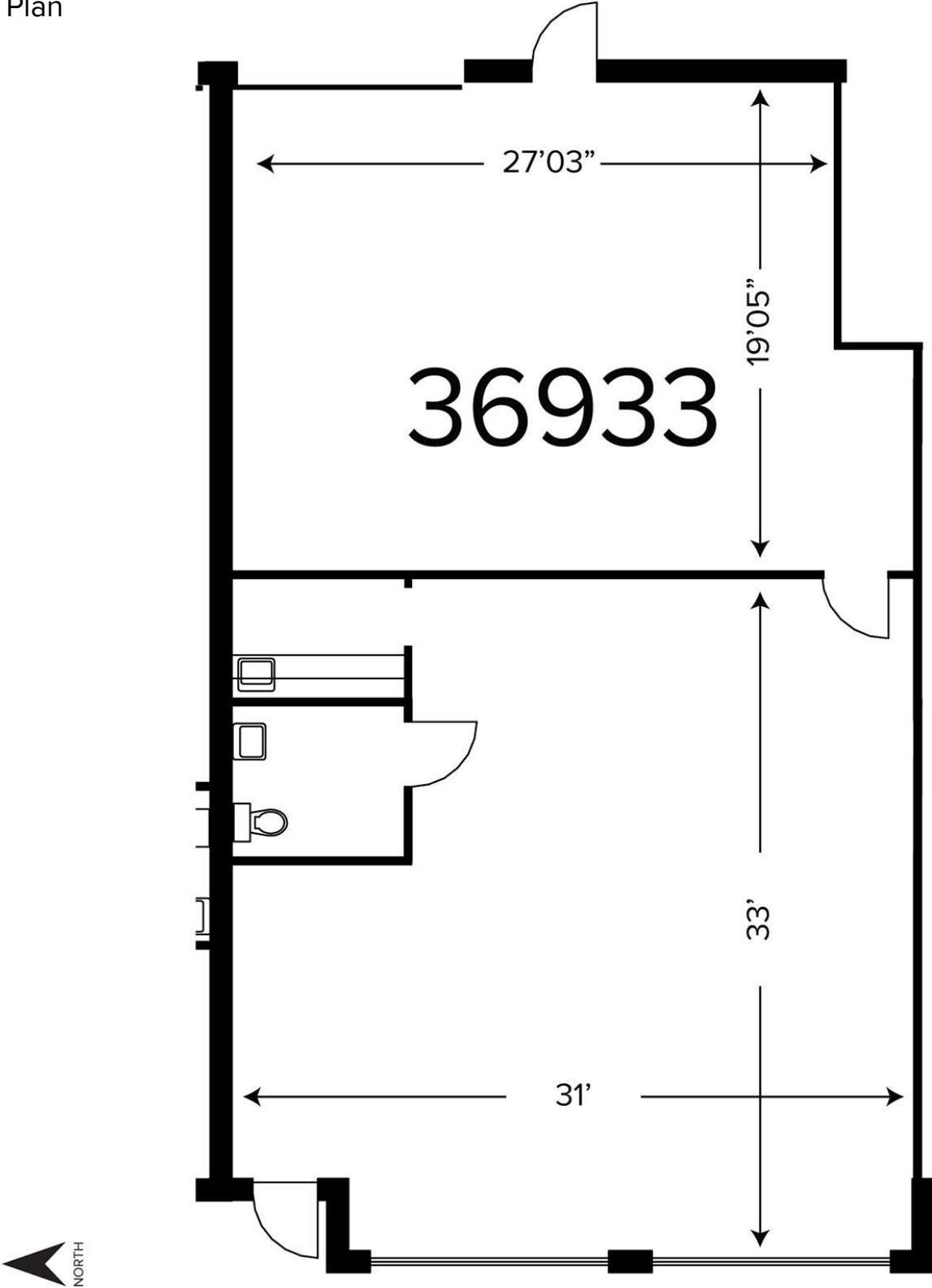
JASON STOUGH
(248) 948 4180
jstough@signatureassociates.com

SIGNATURE ASSOCIATES
One Towne Square, Suite 1200
Southfield, MI 48076
www.signatureassociates.com

36917-36955 Schoolcraft Road - Livonia, Michigan
Hi-Tech For Lease

1,250 – 2,680
Square Feet
AVAILABLE

Floor Plan



For more information, please contact:

CHRIS D'ANGELO
(248) 948 0109
cdangelo@signatureassociates.com

JASON STOUGH
(248) 948 4180
jstough@signatureassociates.com

SIGNATURE ASSOCIATES
One Towne Square, Suite 1200
Southfield, MI 48076
www.signatureassociates.com

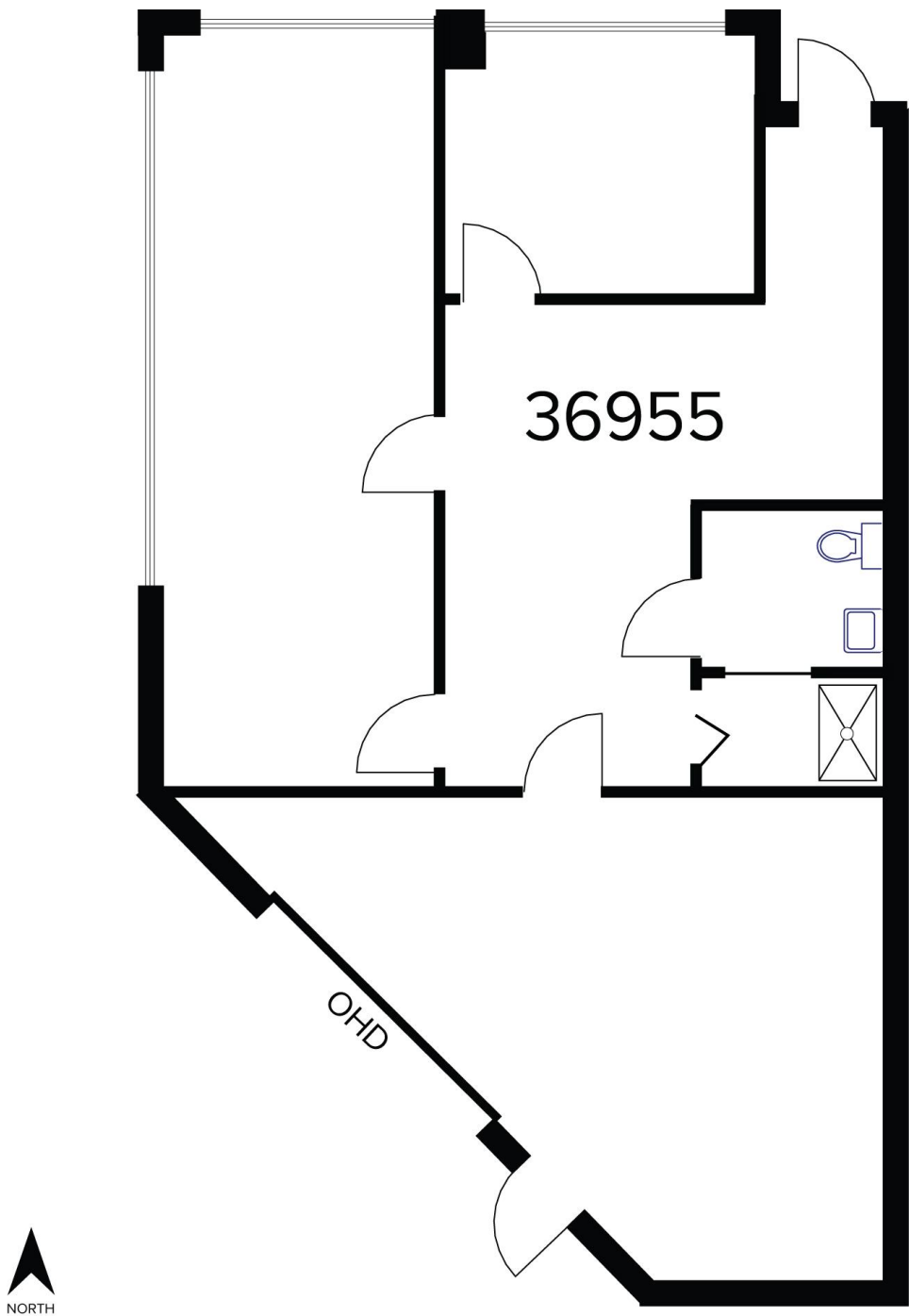
Information is subject to verification and no liability for errors or omissions is assumed. Price is subject to change and listing withdrawal.

36917-36955 Schoolcraft Road - Livonia, Michigan

Hi-Tech For Lease

1,250 – 2,680
Square Feet
AVAILABLE

Floor Plan



For more information, please contact:

CHRIS D'ANGELO
(248) 948 0109
cdangelo@signatureassociates.com

JASON STOUGH
(248) 948 4180
jstough@signatureassociates.com

SIGNATURE ASSOCIATES
One Towne Square, Suite 1200
Southfield, MI 48076
www.signatureassociates.com

Information is subject to verification and no liability for errors or omissions is assumed. Price is subject to change and listing withdrawal.