

27690 – 27720 JOY ROAD
LIVONIA, MICHIGAN

INDUSTRIAL / RETAIL FOR SALE OR LEASE

For Sale: 12,108 Square Feet

For Lease: 3,920 – 8,158 Square Feet



SIGNATURE ASSOCIATES
KNOW SIGNATURE | KNOW RESULTS

MAIN ROAD FRONTAGE



PROPERTY FEATURES

- 3,920 – 8,158 square feet available for lease
 - **FRONT SPACE:** 3,920 square feet with 725 square feet office
 - **ENTIRE SPACE:** 8,158 square feet with 725 square feet office
- Entire 12,108 square foot building for sale
- 12' – 14' clear height
- (2) grade level doors (10' x 10', 10' x 14')
- Polished concrete floors & LED lights
- Easy access to major freeways, Downtown Detroit and Metro Airport
- Lease Rate: \$7.00/sq. ft. NNN
- Sale Price: \$1,300,000 (\$107.37/sq. ft.)



For more information, please contact:

JUSTIN GAFFREY
(248) 799 3143
jgaffrey@signatureassociates.com

CHRIS D'ANGELO
(248) 948 0109
cdangelo@signatureassociates.com

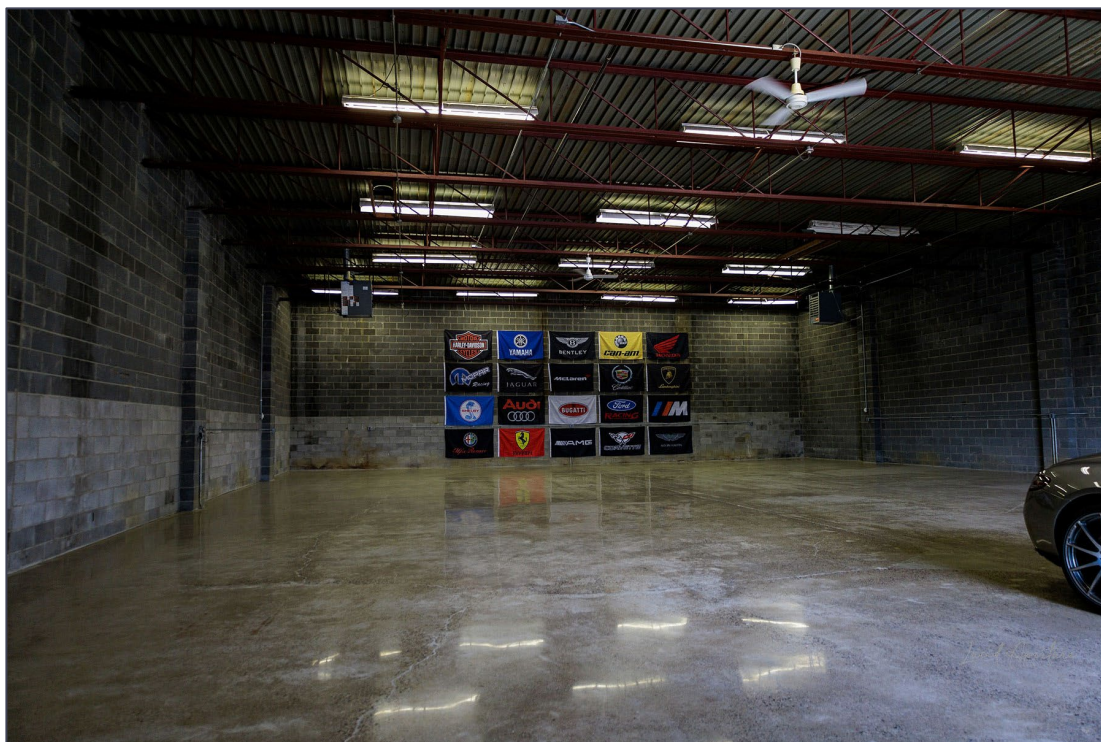
SIGNATURE ASSOCIATES
One Towne Square, Suite 1200
Southfield, MI 48076
www.signatureassociates.com

27690 - 27720 Joy Road – Livonia, Michigan

Industrial / Retail For Sale or Lease

For Lease –
3,920 - 8,158 SF
For Sale –
12,108 SF

Warehouse Photos



For more information, please contact:

JUSTIN GAFFREY
(248) 799 3143
jgaffrey@signatureassociates.com

CHRIS D'ANGELO
(248) 948 0109
cdangelo@signatureassociates.com

SIGNATURE ASSOCIATES
One Towne Square, Suite 1200
Southfield, MI 48076
www.signatureassociates.com

27690 - 27720 Joy Road – Livonia, Michigan

Industrial / Retail For Sale or Lease

For Lease –
3,920 - 8,158 SF
For Sale –
12,108 SF

Site Plan



For more information, please contact:

JUSTIN GAFFREY
(248) 799 3143
jgaffrey@signatureassociates.com

CHRIS D'ANGELO
(248) 948 0109
cdangelo@signatureassociates.com

SIGNATURE ASSOCIATES
One Towne Square, Suite 1200
Southfield, MI 48076
www.signatureassociates.com

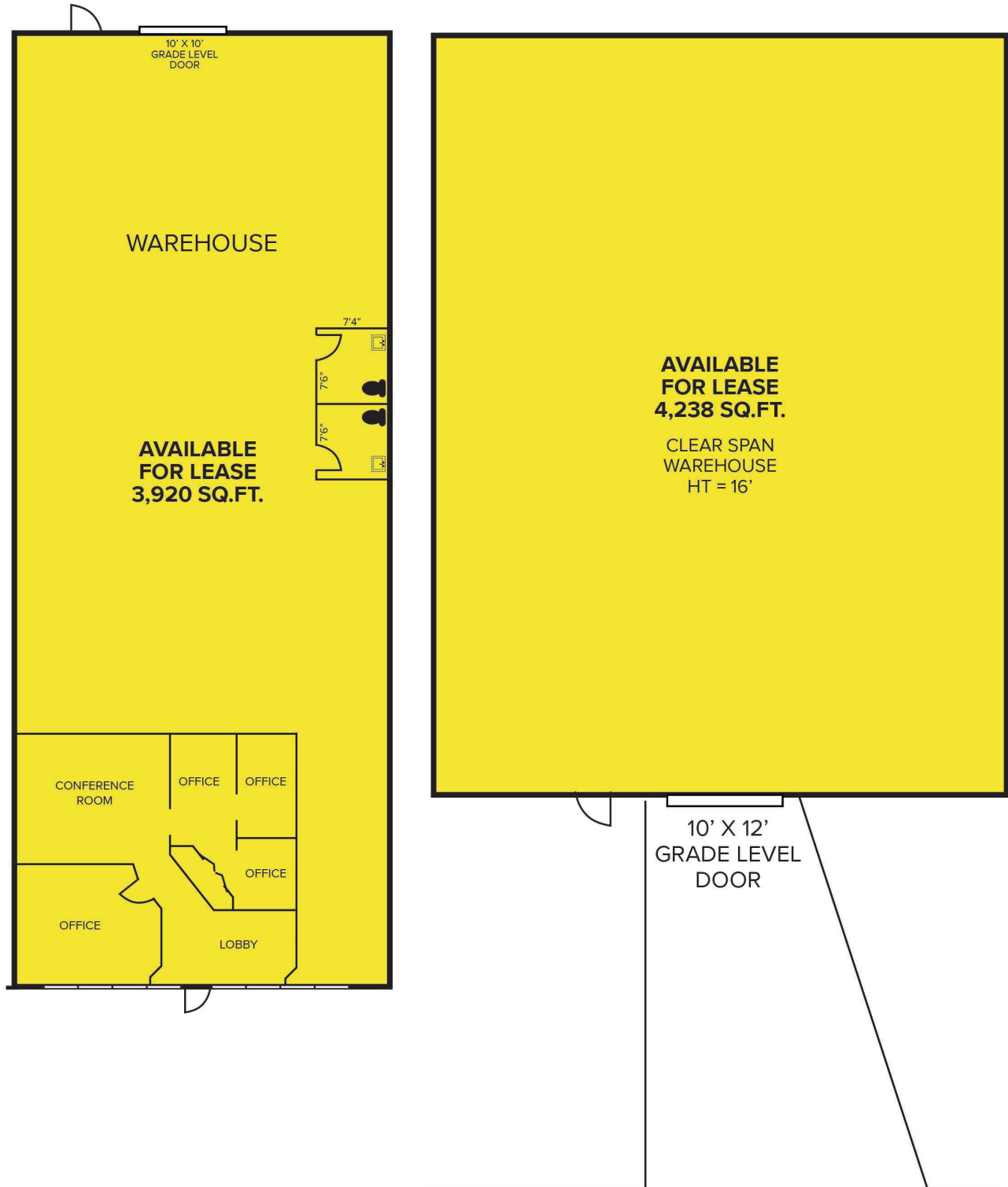
Information is subject to verification and no liability for errors or omissions is assumed. Price is subject to change and listing withdrawal.

27690 - 27720 Joy Road – Livonia, Michigan

Industrial / Retail For Sale or Lease

For Lease –
3,920 - 8,158 SF
For Sale –
12,108 SF

Floor Plan



For more information, please contact:

JUSTIN GAFFREY
(248) 799 3143
jgaffrey@signatureassociates.com

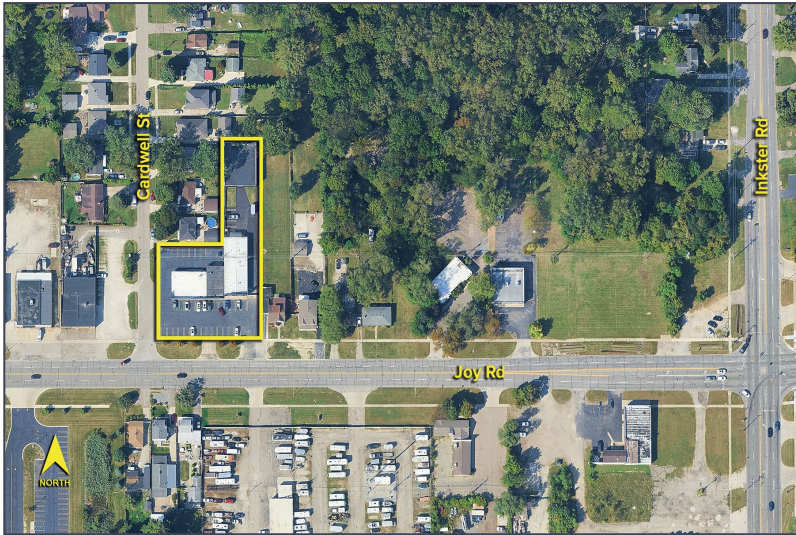
CHRIS D'ANGELO
(248) 948 0109
cdangelo@signatureassociates.com

SIGNATURE ASSOCIATES
One Towne Square, Suite 1200
Southfield, MI 48076
www.signatureassociates.com

27690 - 27720 Joy Road – Livonia, Michigan

Industrial / Retail For Sale or Lease

For Lease –
3,920 - 8,158 SF
For Sale –
12,108 SF

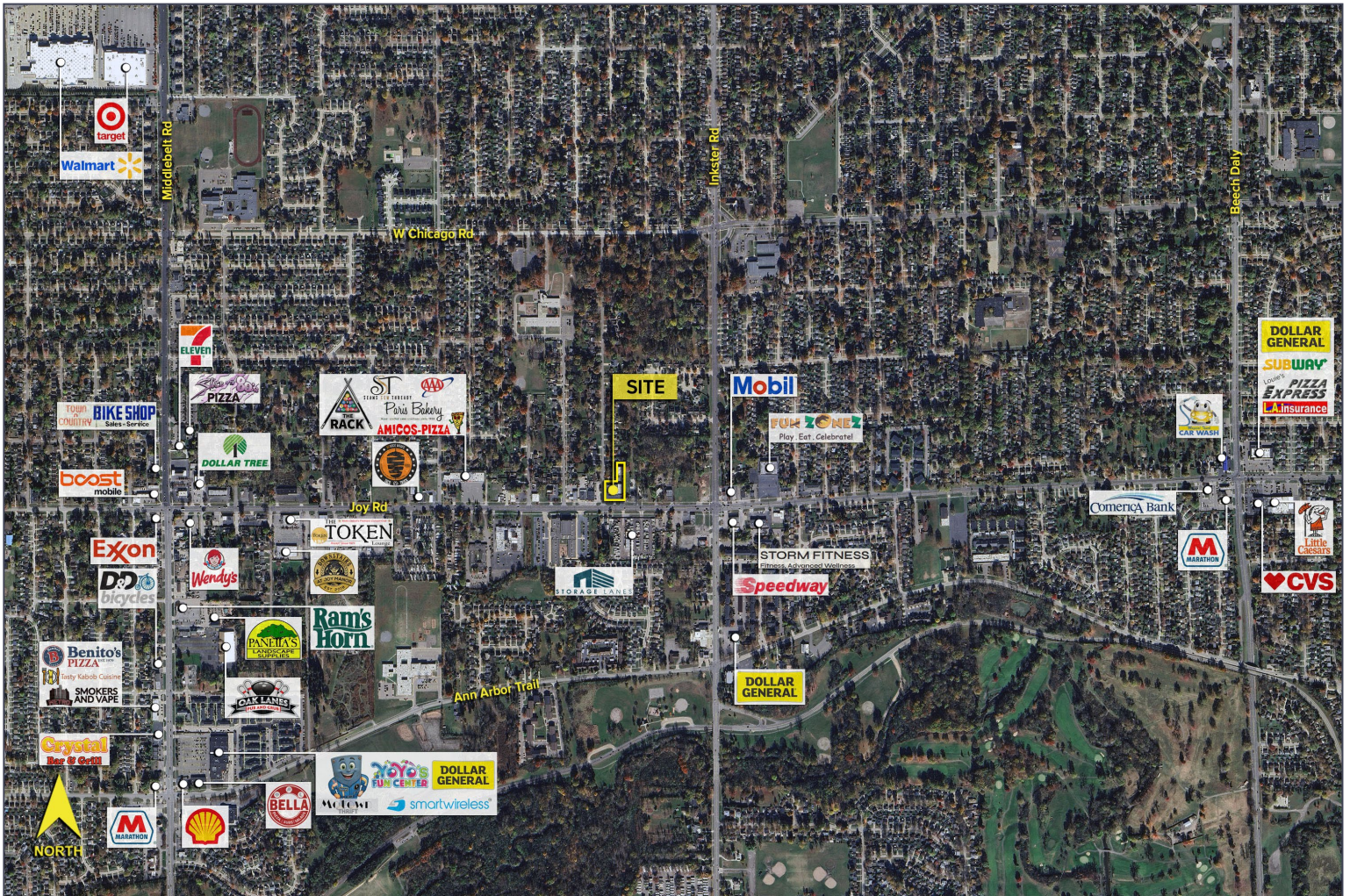


DEMOGRAPHICS

	POPULATION	MED. HH INCOME
1 MILE	13,959	\$75,071
3 MILE	118,027	\$75,130
5 MILE	303,675	\$67,960

TRAFFIC COUNTS (TWO-WAY)

25,684	Inkster Rd. N of Joy Rd.
25,978	Inkster Rd. S of Joy Rd.
12,973	Joy Rd. E of Inkster Rd.
13,563	Joy Rd. W of Inkster Rd.



For more information, please contact:

JUSTIN GAFFREY
(248) 799 3143
jgaffrey@signatureassociates.com

CHRIS D'ANGELO
(248) 948 0109
cdangelo@signatureassociates.com

SIGNATURE ASSOCIATES
One Towne Square, Suite 1200
Southfield, MI 48076
www.signatureassociates.com