

MANUFACTURING & DISTRIBUTION BUILDING WITH CRANE IN ST. JOHNS NEAR US-127



FOR SALE OR LEASE
205 E Walker Rd.
St. Johns, MI

AVAILABLE:
54,154 SF

CHRISTOPHER MILLER, SIOR
Senior Vice President,
Industrial/Investment Advisor
Direct: 517 319-9244
christopher.miller@martincommercial.com


Martin
martincommercial.com



MANUFACTURING & WAREHOUSE SPACE WITH STRONG POWER AND LOADING CAPABILITIES

Located within an established industrial park in St. Johns, this 54,154 SF industrial facility offers a highly functional layout designed for manufacturing, warehousing, and distribution users. The property features approximately 50,000 SF of high-bay space with 20' clear heights at the exterior walls, 24' clear height at the center, 50' column spacing, and a 10-ton crane to support a variety of operational needs.

With 2,000 amps of 600V power with busways, multiple loading options including two dock doors and two drive-in bays, and convenient access to US-127, the facility combines strong infrastructure with efficient regional connectivity. Updated office space and a well-maintained site further position the property for a wide range of industrial users seeking flexible, move-in-ready functionality.

LEASE RATE: **SALE PRICE:**
\$5.90 **\$3,200,000**

PSF/YR, NNN

PROPERTY FEATURES



DOORS:

(2) Dock Level,
(2) Drive-in Bays



CRANE:

10 Ton Ceiling



COLUMN SPACING:

50'



CEILING:

20-24'



POWER:

2,000 Amps,
600V with Busways



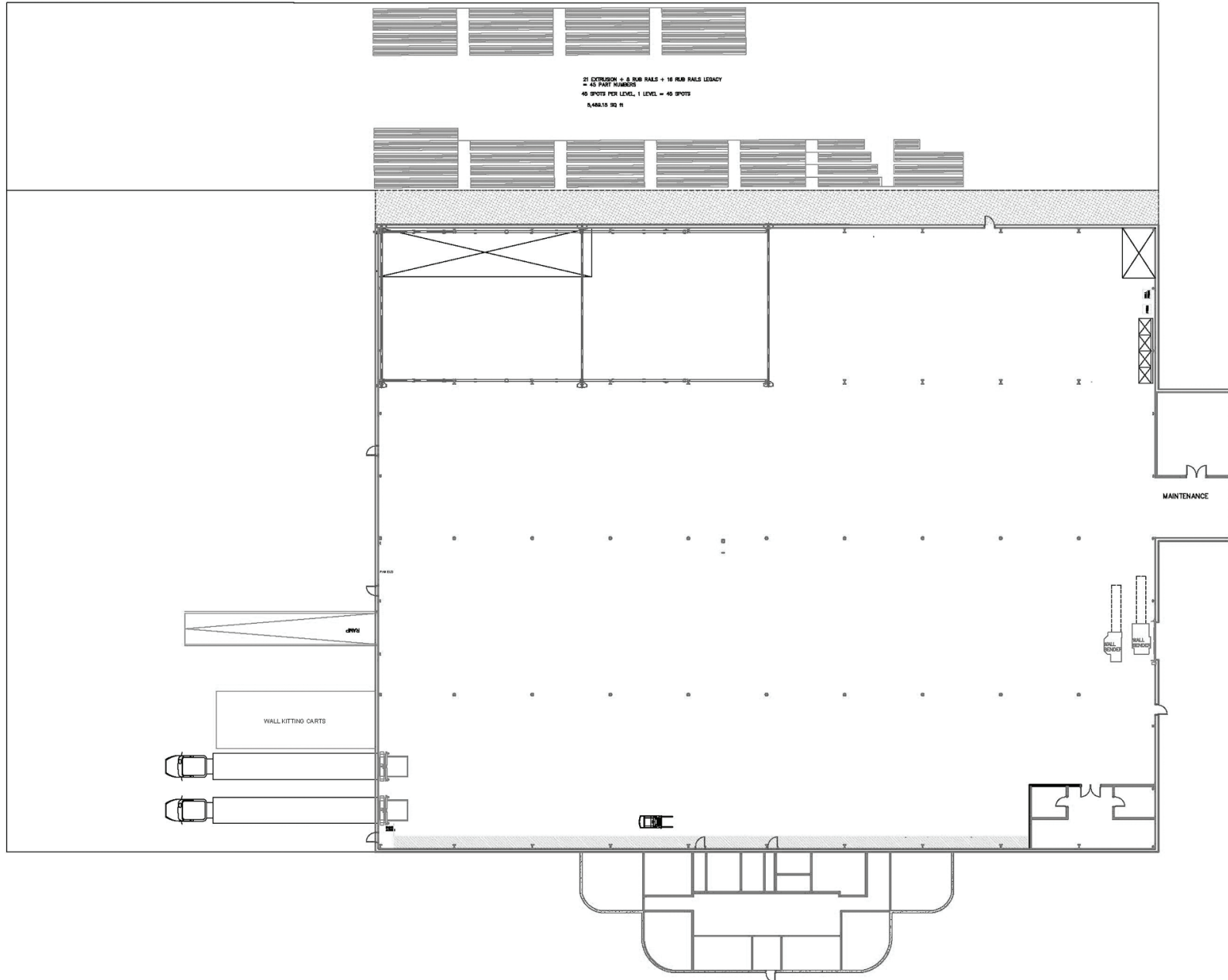
OFFICE:

4,154 SF



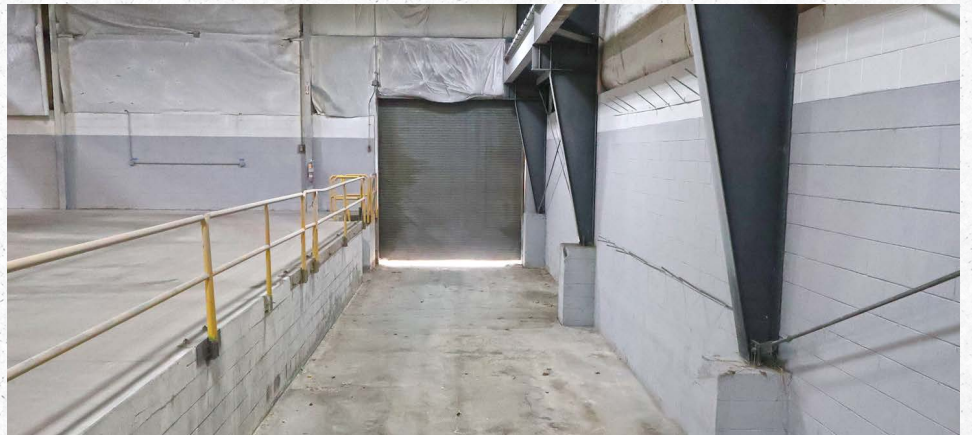
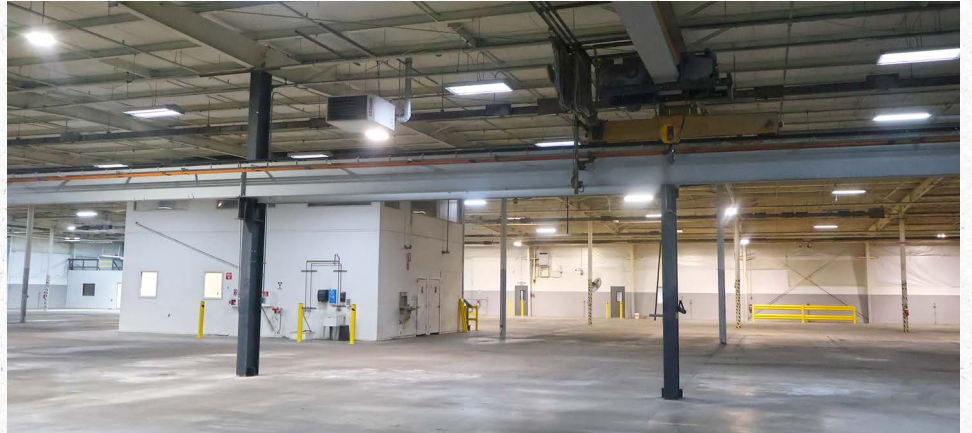
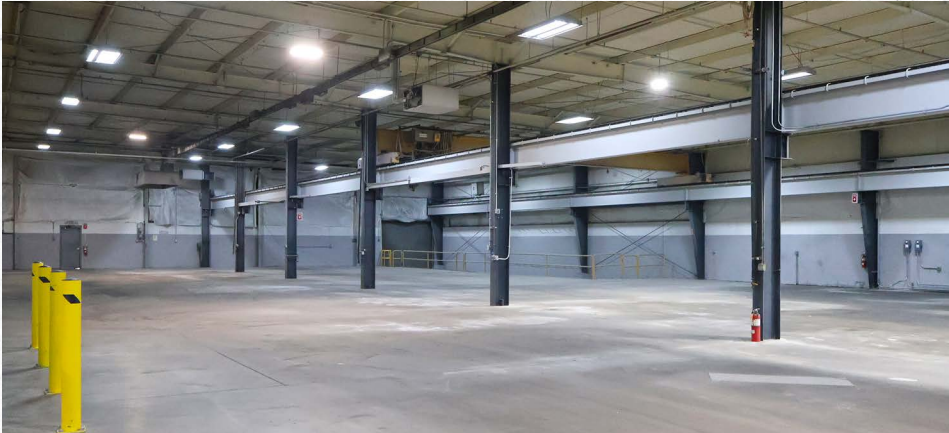


FLOOR PLAN





GALLERY





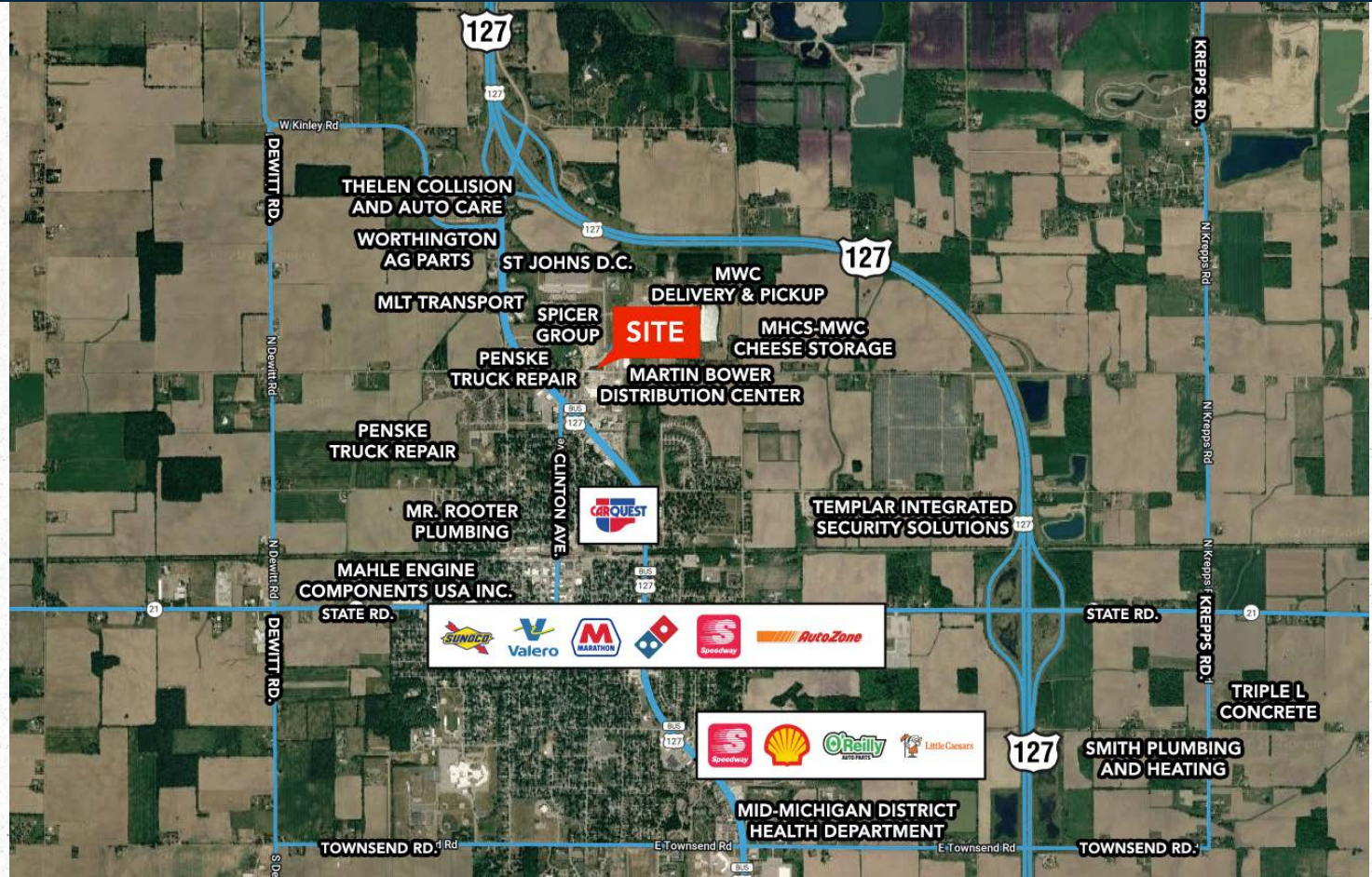
AREA INFORMATION

1.1 Miles
to US-127 and St. Johns

30 Minutes
to Lansing and Owosso

1.5 Hours
to Grand Rapids and Detroit

Convenient to
US-127 and all areas of Greater
Lansing



DEMOGRAPHICS

	1-Mile	3-Miles	5-Miles
Proximity	1-Mile	3-Miles	5-Miles
Population	12,683	2,943	9,530
Households	5,390	1,316	4,165
Labor Population	2,957	40,958	123,507



Martin Your Vision. Our Mission.

Martin Commercial Properties is a vertically integrated commercial real estate firm with an established track record of delivering superior service and unparalleled results to clients since 1962. Our experienced team efficiently serves clients nationally by combining big business benefits with the attentiveness to detail and insight that you would expect from a local firm. With offices in Lansing, Grand Rapids, and Tampa, we provide strategic advice and execution in five core lines of business including brokerage services, investment services, property management, property development, and corporate services.



Brokerage
Services



Property
Management



Construction
Services



Investment
Services



Corporate
Services

martincommercial.com | East Lansing | Grand Rapids | Tampa

© 2026 Martin Commercial Properties, Inc. All rights reserved. This information has been obtained from sources believed reliable but has not been verified for accuracy or completeness. You should conduct a careful, independent investigation of the property and verify all information. Any reliance on this information is solely at your own risk. Martin Commercial Properties and the Martin logo are service marks of Martin Commercial Properties, Inc. All other marks displayed on this document are the property of their respective owners. Photos herein are the property of their respective owners. Use of these images without the express written consent of the owner is prohibited.