

NEW OFFICE BUILDING



PILOT PROPERTY GROUP

51847 VAN DYKE AVE, SHELBY TOWNSHIP, MI 48316

PROPERTY OVERVIEW:

New Construction - Build to Suit.
Signage Available.

Property Type: Office/Medical
Cross Streets: West side of Van Dyke, North of 23 Mile Rd
Total Square Footage: 4,100
Minimum Square Footage: 2,000
Maximum Square Footage: 4,100
Year Built: 2026
Zoning: Office/Medical
Lease Rate: \$21.95/SF
Lease Type: Gross



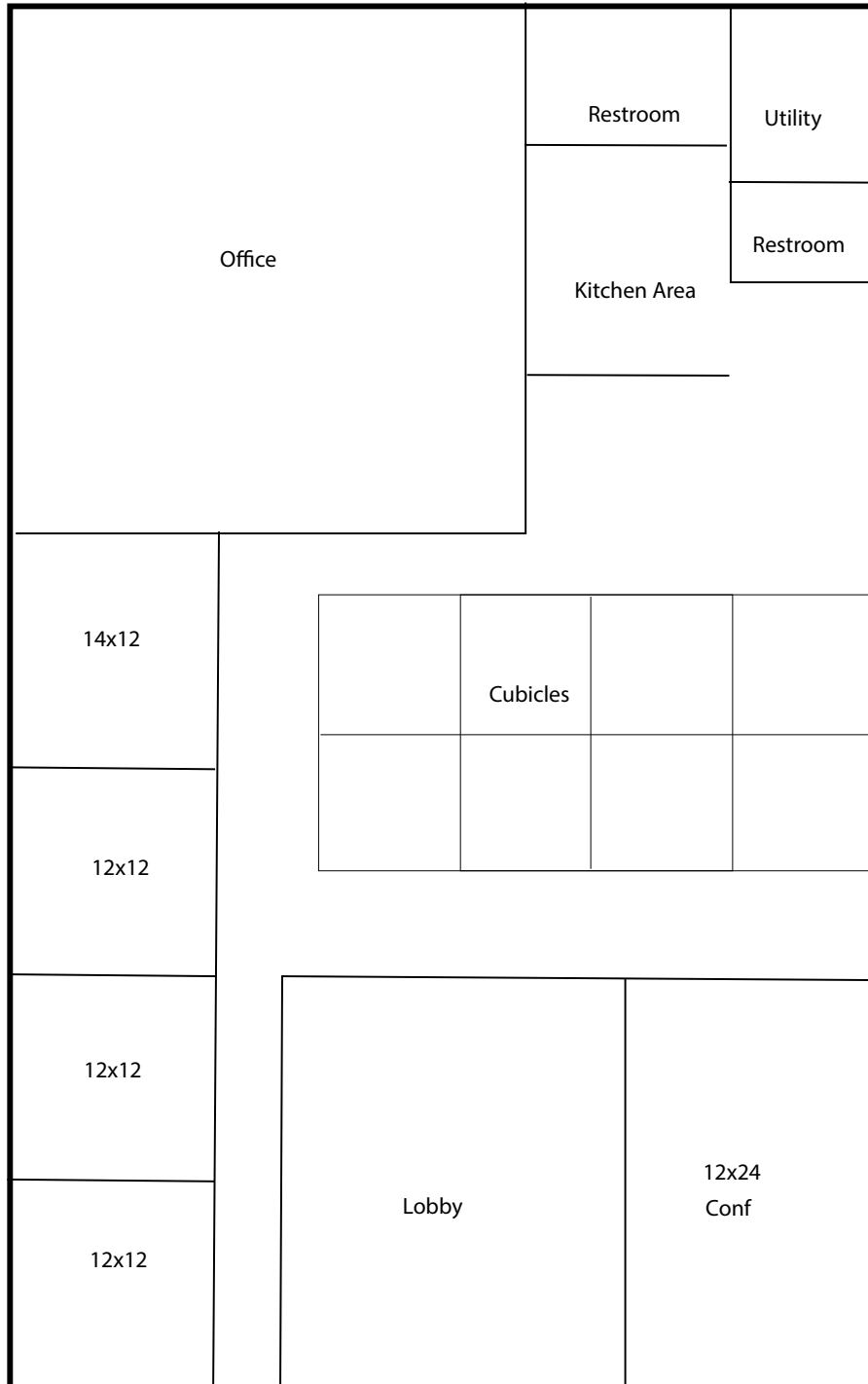
AGENT CONTACT INFO

ANTHONY RUBINO O: 586.254.0900 x101 • C: 586.873.5419 • anthony@pilotpg.com
TONY CAVATAIO O: 586.254.0900 x107 • C: 586.291.6968 • tcavataio@pilotpg.com

Matching the right people to the right place.

*Offices in Sterling Heights and Port Huron to serve you
586.254.0900 • www.pilotpg.com*

PROPOSED FLOORPLAN



Matching the right people to the right place.

Offices in Sterling Heights and Port Huron to serve you
586.254.0900 • www.pilotpg.com

ADDITIONAL PHOTOS



Matching the right people to the right place.

Offices in Sterling Heights and Port Huron to serve you
586.254.0900 • www.pilotpg.com