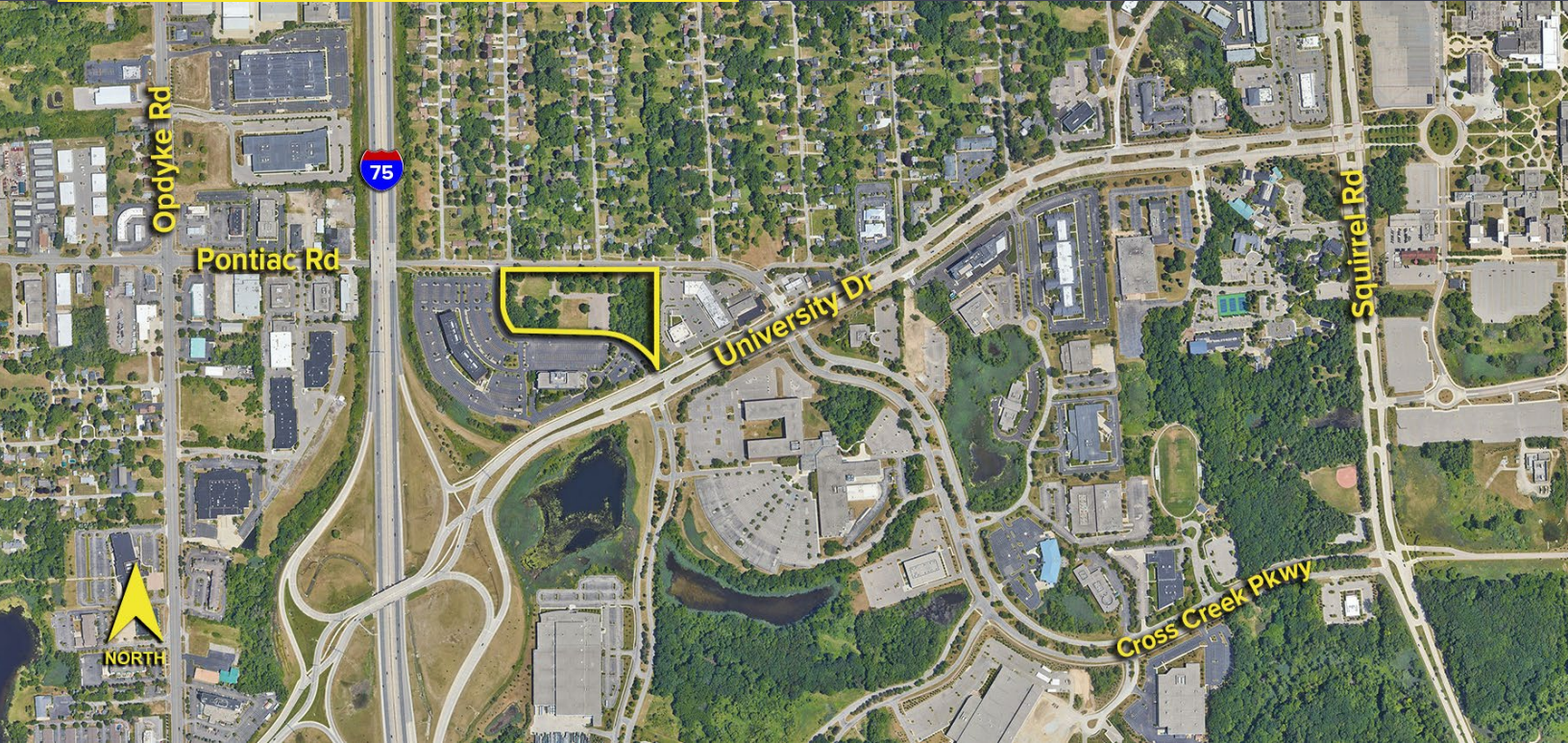


2550 PONTIAC ROAD
AUBURN HILLS, MICHIGAN



**SIGNATURE
ASSOCIATES**
KNOW SIGNATURE | KNOW RESULTS

LAND FOR SALE
8.82 Acres Available



PROPERTY FEATURES

- 8.82 acres available
- Zoned T & R
- One of the last remaining sites in Auburn Hills
- High profile site, 600' from I-75 (potentially visible)
- Previously site plan approved for 70,000 sq. ft. with expansion land
- Seller has a current survey, tree survey, soil borings, wetland study and proposed building elevations
- Sale price: \$1,500,000 (\$170,068.03/acre)



For more information, please contact:

PAUL HOGE
(248) 948 0103
paulhoge@signatureassociates.com

JIM MONTGOMERY
(248) 359 0614
jmontgomery@signatureassociates.com

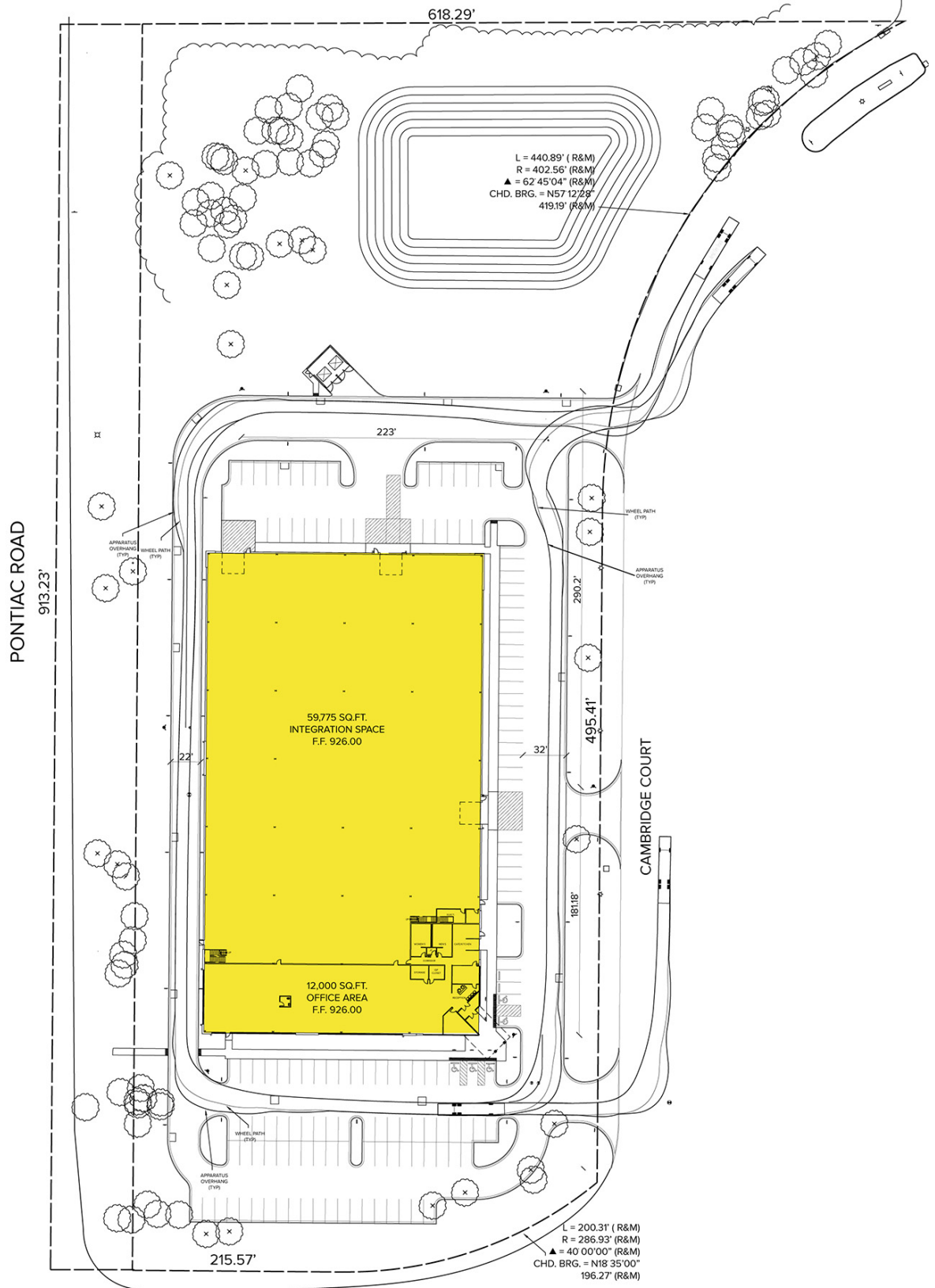
SIGNATURE ASSOCIATES
One Towne Square, Suite 1200
Southfield, MI 48076
www.signatureassociates.com

2550 Pontiac Road – Auburn Hills, Michigan

Land For Sale

8.82
Acres
AVAILABLE

Site Plan



For more information, please contact:

PAUL HOGE
(248) 948 0103
paulhoge@signatureassociates.com

JIM MONTGOMERY
(248) 359 0614
jmontgomery@signatureassociates.com

SIGNATURE ASSOCIATES
One Towne Square, Suite 1200
Southfield, MI 48076
www.signatureassociates.com

2550 Pontiac Road – Auburn Hills, Michigan

Land For Sale

8.82
Acres
AVAILABLE

Site Plan – Photo Rendering



For more information, please contact:

PAUL HOGE

(248) 948 0103

paulhoge@signatureassociates.com

JIM MONTGOMERY

(248) 359 0614

jmontgomery@signatureassociates.com

SIGNATURE ASSOCIATES

One Towne Square, Suite 1200

Southfield, MI 48076

www.signatureassociates.com

Information is subject to verification and no liability for errors or omissions is assumed. Price is subject to change and listing withdrawal.