



**SIGNATURE  
ASSOCIATES**  
KNOW SIGNATURE | KNOW RESULTS

# FOR LEASE

48325-48679 ALPHA DRIVE | WIXOM, MICHIGAN



## PROPERTY FEATURES

- Up to 33,588 contiguous square feet available
  - 48443 Alpha Dr: Suite 160 – 6,179 sq. ft.
  - 48561 Alpha Dr: Suite 120 – 20,196 sq. ft.
  - 48561 Alpha Dr: Suite 300 – 13,392 sq. ft.
  - 48679 Alpha Dr: Suite 100 – 4,617 sq. ft.
  - 48679 Alpha Dr: Suite 110 – 8,138 sq. ft.
- Flexible designs allows for a variety of uses
- Situated in a beautiful campus-like setting with an abundance of parking close to each suite
- Immediately adjacent to major expressways
- Area amenities include hotels, banks, shopping, restaurants and gas stations
- Lease Rate: \$10.95 - \$13.50/sq. ft. NNN



For more information, please contact:

**DAVE GREEN**

(248) 948 4184

dgreen@signatureassociates.com

**SIGNATURE ASSOCIATES**

One Towne Square, Suite 1200

Southfield, MI 48076

www.signatureassociates.com

# 48325 - 48679 Alpha Drive - Wixom, Michigan

## Hi-Tech for Lease

Up to 33,588  
Square Feet  
AVAILABLE

Address	Available Sq. Ft.	Office Sq. Ft.
48443 Alpha - Suite 160	6,179	To Suit
48561 Alpha - Suite 120	20,196*	To Suit
48561 Alpha - Suite 300	13,392*	To Suit
48679 Alpha - Suite 100	4,617**	To Suit
48679 Alpha - Suite 110	8,138**	To Suit
*Contiguous	33,588	
**Contiguous	12,755	



For more information, please contact:

**DAVE GREEN**  
(248) 948 4184

dgreen@signatureassociates.com

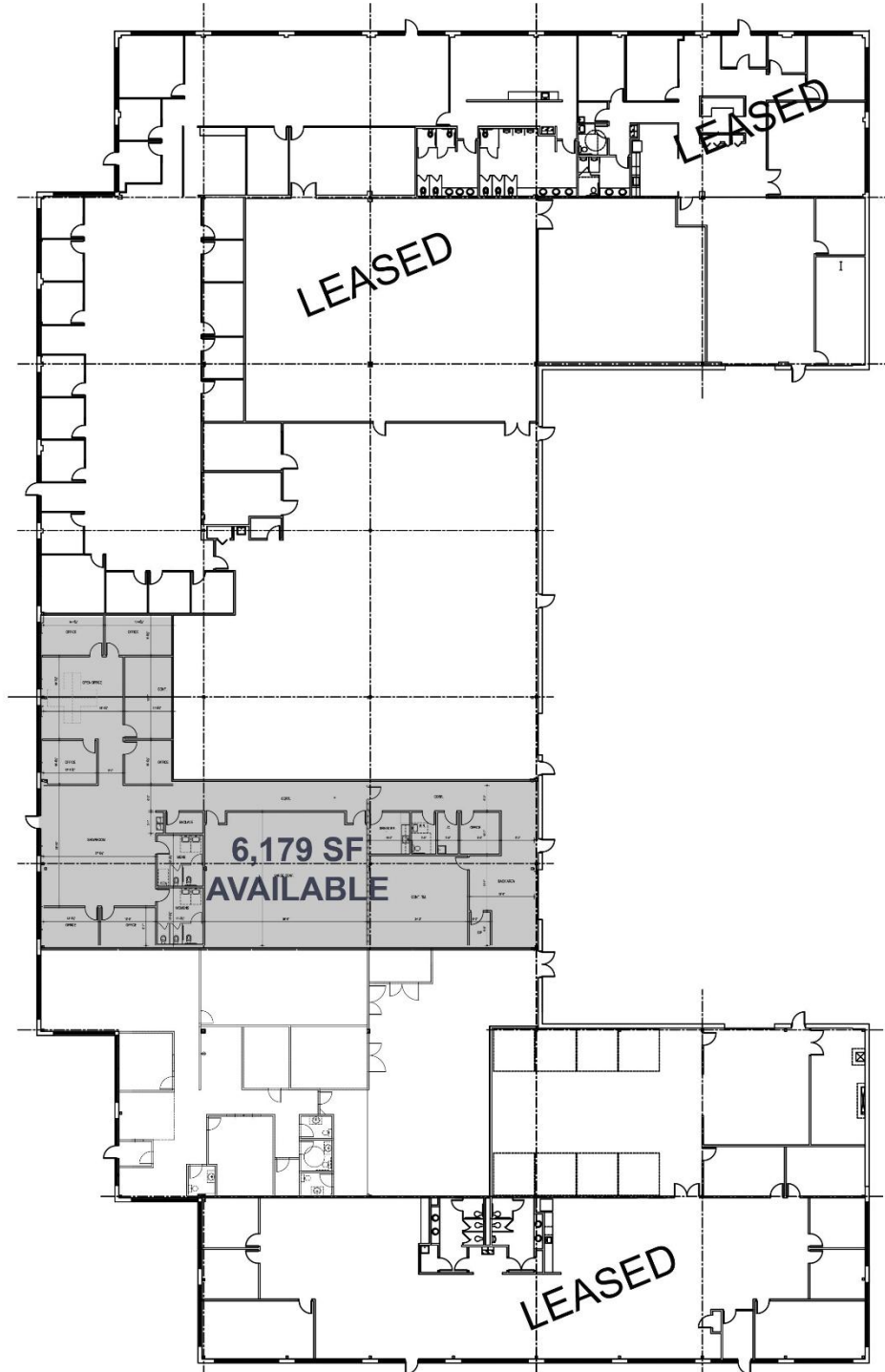
**SIGNATURE ASSOCIATES**  
One Towne Square, Suite 1200  
Southfield, MI 48076  
www.signatureassociates.com

# 48325 - 48679 Alpha Drive - Wixom, Michigan

## Hi-Tech for Lease

Up to 33,588  
Square Feet  
AVAILABLE

Address	Available Sq. Ft.	Office Sq. Ft.	NNN Lease Rate
48443 Alpha - Suite 160	6,179	To Suit	\$11.50/sf



For more information, please contact:

**DAVE GREEN**  
(248) 948 4184  
dgreen@signatureassociates.com

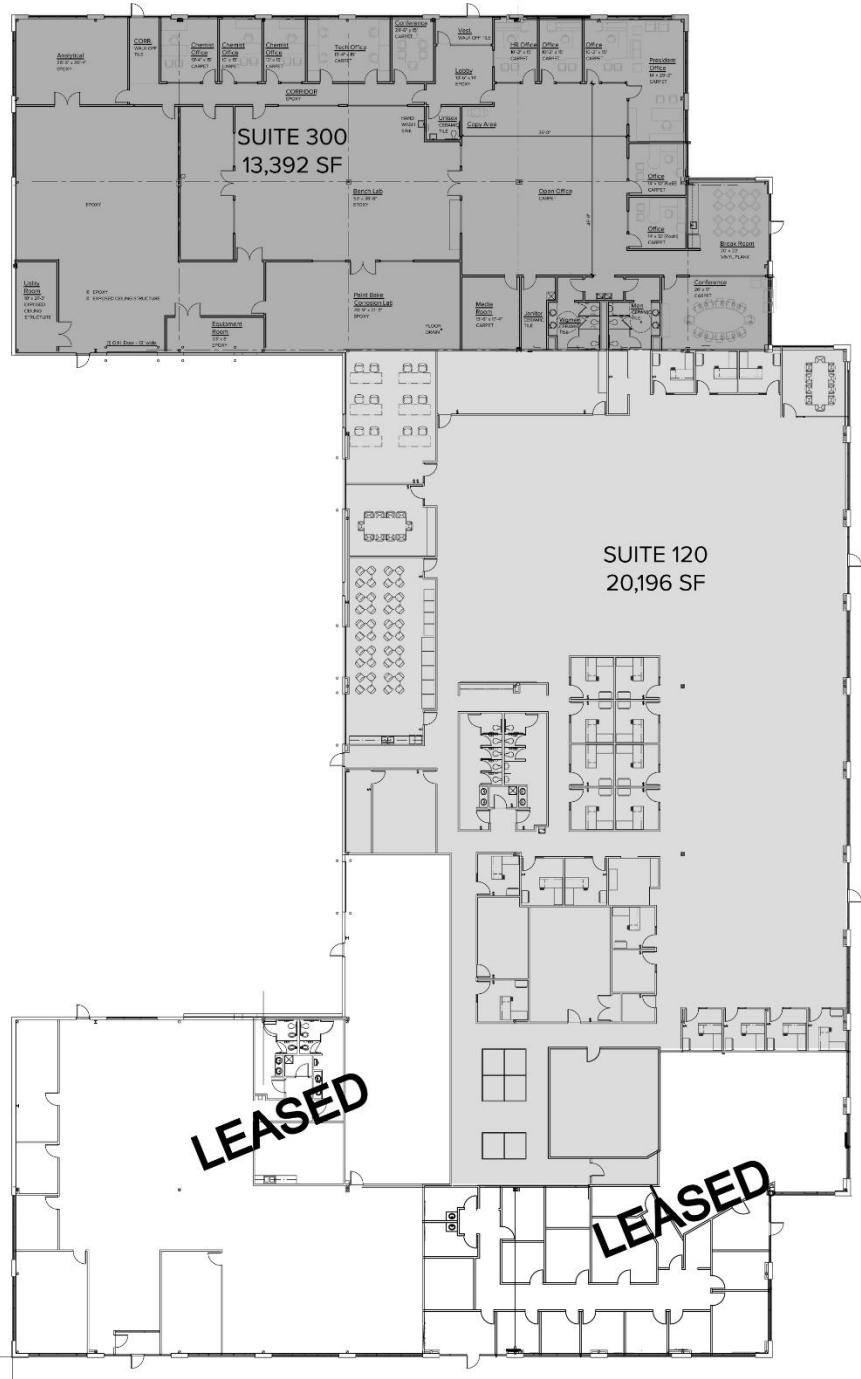
**SIGNATURE ASSOCIATES**  
One Towne Square, Suite 1200  
Southfield, MI 48076  
www.signatureassociates.com

# 48325 - 48679 Alpha Drive - Wixom, Michigan

## Hi-Tech for Lease

Up to 33,588  
Square Feet  
AVAILABLE

Address	Available Sq. Ft.	Office Sq. Ft.	NNN Lease Rate
48561 Alpha - Suite 120	20,196*	To Suit	\$12.50/sf
48561 Alpha - Suite 300	13,392*	To Suit	\$12.25/sf
*Contiguous	*33,588		



For more information, please contact:

**DAVE GREEN**  
(248) 948 4184  
dgreen@signatureassociates.com

**SIGNATURE ASSOCIATES**  
One Towne Square, Suite 1200  
Southfield, MI 48076  
www.signatureassociates.com

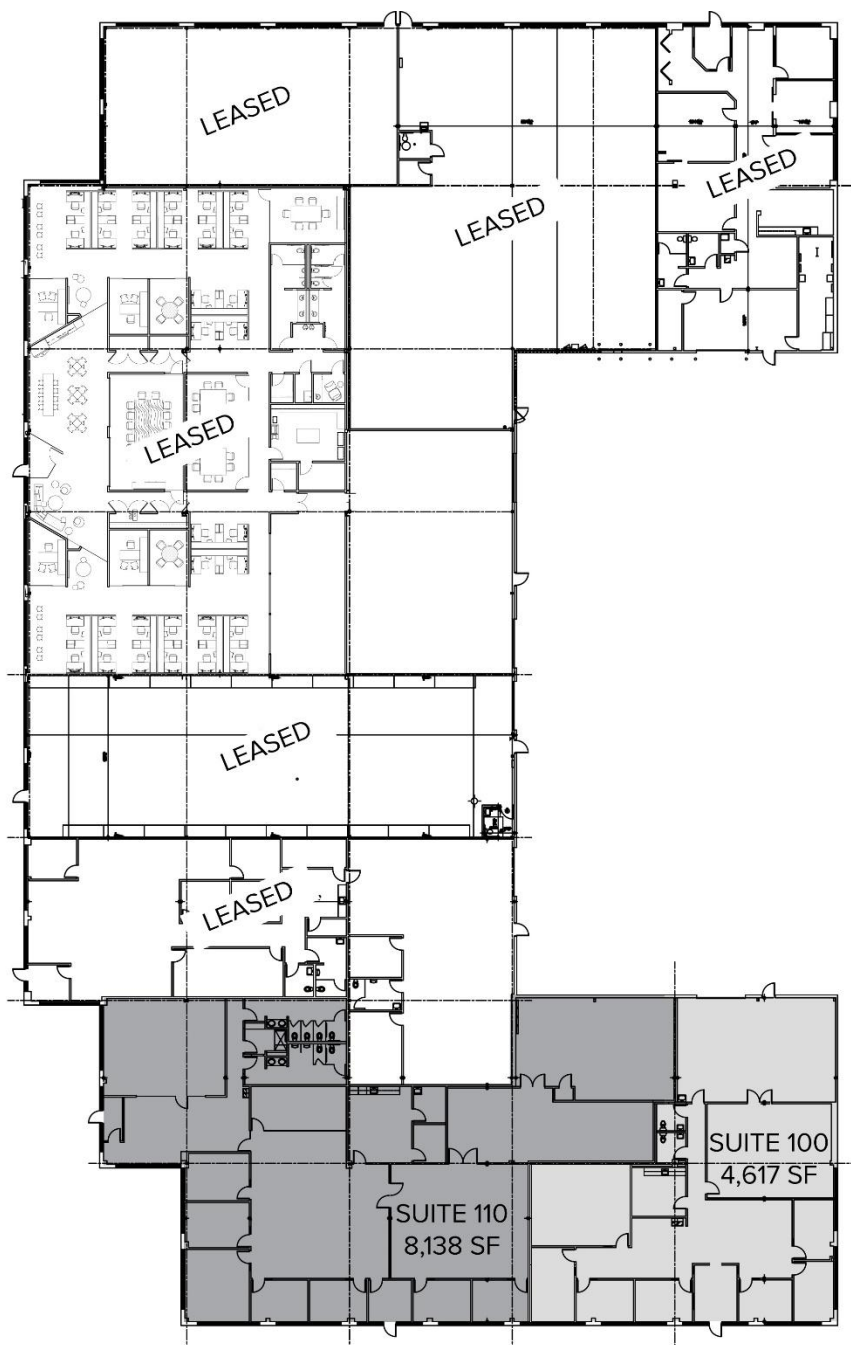
Information is subject to verification and no liability for errors or omissions is assumed. Price is subject to change and listing withdrawal.

# 48325 - 48679 Alpha Drive - Wixom, Michigan

## Hi-Tech for Lease

Up to 33,588  
Square Feet  
AVAILABLE

Address	Available Sq. Ft.	Office Sq. Ft.	NNN Lease Rate
48679 Alpha - Suite 100	4,617*	To Suit	\$10.95/sf
48679 Alpha - Suite 110	8,138*	To Suit	\$13.50/sf
*Contiguous	*12,755		



For more information, please contact:

**DAVE GREEN**  
(248) 948 4184  
dgreen@signatureassociates.com

**SIGNATURE ASSOCIATES**  
One Towne Square, Suite 1200  
Southfield, MI 48076  
www.signatureassociates.com

# 48325 - 48679 Alpha Drive - Wixom, Michigan

## Hi-Tech for Lease

Up to 33,588  
Square Feet  
AVAILABLE

### Aerial View



For more information, please contact:

**DAVE GREEN**  
(248) 948 4184  
dgreen@signatureassociates.com

**SIGNATURE ASSOCIATES**  
One Towne Square, Suite 1200  
Southfield, MI 48076  
www.signatureassociates.com