

2994 E. GRAND BOULEVARD  
DETROIT, MICHIGAN



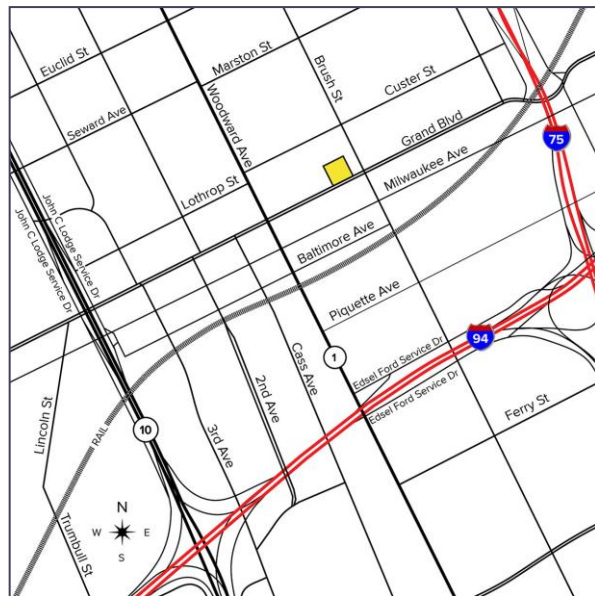
**SIGNATURE  
ASSOCIATES**  
KNOW SIGNATURE | KNOW RESULTS

RETAIL/OFFICE FOR SALE  
3,919 Square Feet Available



## PROPERTY FEATURES

- 3,919 square feet sale
- Redevelopment opportunity
- Many possible uses
- Zoned B4
- Sale Price: \$399,000 (\$101.81/sq.ft.)



For more information, please contact:

**JOE STACK**  
(248) 359 0615

[jstack@signatureassociates.com](mailto:jstack@signatureassociates.com)

**JOE PLASKEY**  
(248) 948 0110

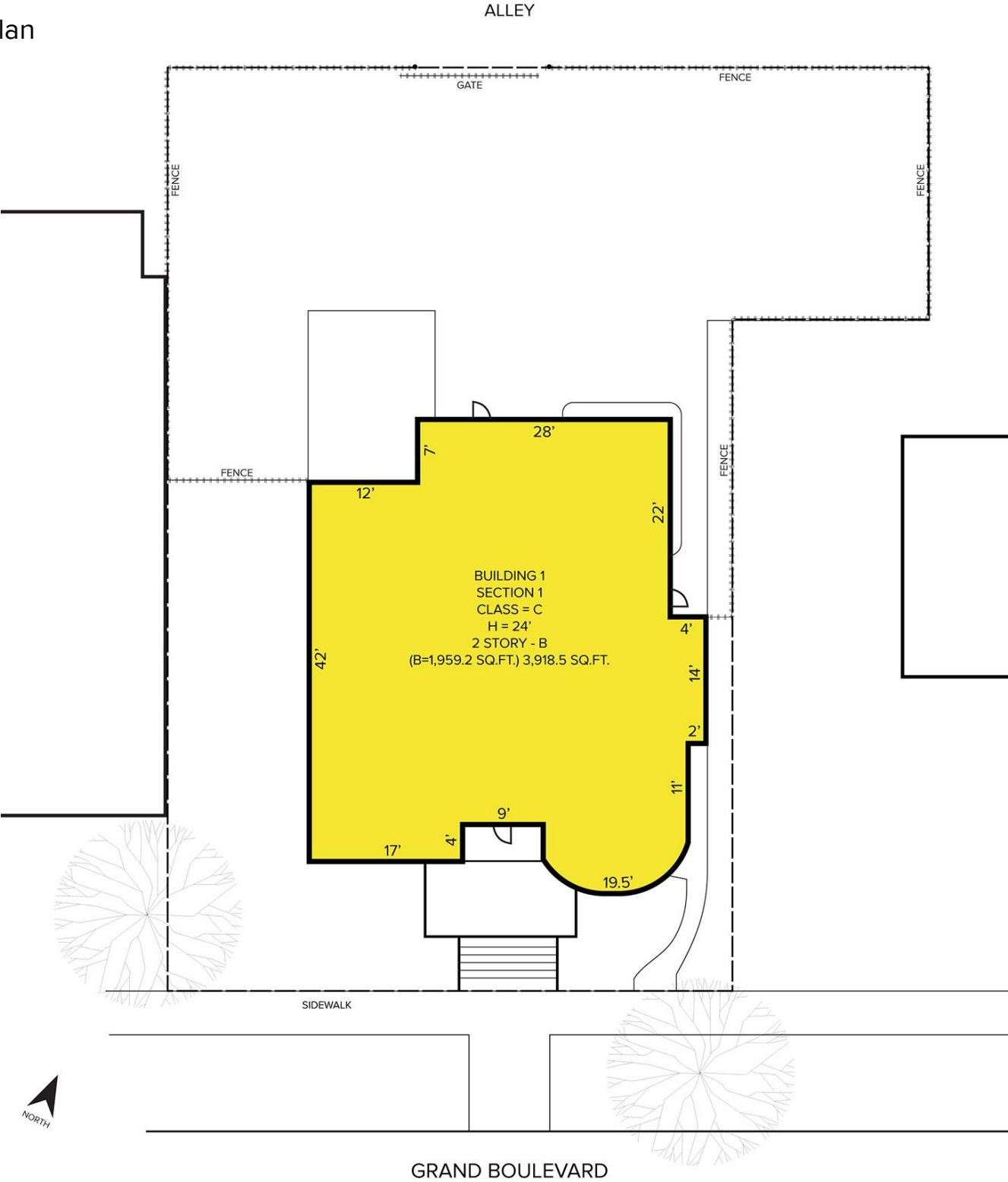
[jplaskey@signatureassociates.com](mailto:jplaskey@signatureassociates.com)

**SIGNATURE ASSOCIATES**  
One Towne Square, Suite 1200  
Southfield, MI 48076  
[www.signatureassociates.com](http://www.signatureassociates.com)

2994 E. Grand Boulevard – Detroit, Michigan  
Retail/Office For Sale

3,919  
Square Feet  
AVAILABLE

Site Plan



For more information, please contact:

**JOE STACK**  
(248) 359 0615  
jstack@signatureassociates.com

**JOE PLASKEY**  
(248) 948 0110  
jplaskey@signatureassociates.com

**SIGNATURE ASSOCIATES**  
One Towne Square, Suite 1200  
Southfield, MI 48076  
www.signatureassociates.com

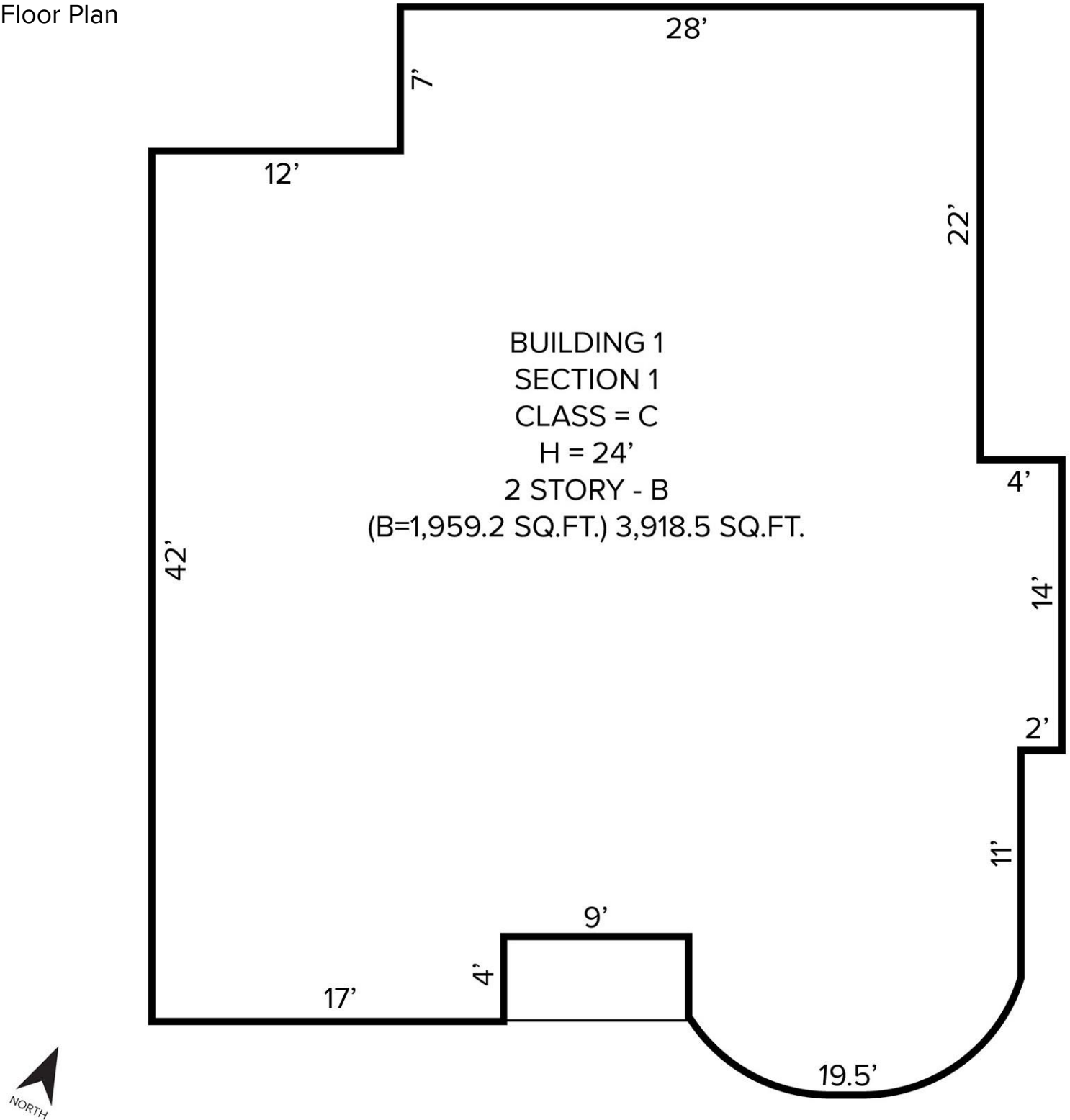
Information is subject to verification and no liability for errors or omissions is assumed. Price is subject to change and listing withdrawal.

# 2994 E. Grand Boulevard – Detroit, Michigan

Retail/Office For Sale

3,919  
Square Feet  
AVAILABLE

Floor Plan



For more information, please contact:

**JOE STACK**  
(248) 359 0615  
[jstack@signatureassociates.com](mailto:jstack@signatureassociates.com)

**JOE PLASKEY**  
(248) 948 0110  
[jplaskey@signatureassociates.com](mailto:jplaskey@signatureassociates.com)

**SIGNATURE ASSOCIATES**  
One Towne Square, Suite 1200  
Southfield, MI 48076  
[www.signatureassociates.com](http://www.signatureassociates.com)

# 2994 E. Grand Boulevard – Detroit, Michigan

## Retail/Office For Sale

3,919  
Square Feet  
AVAILABLE

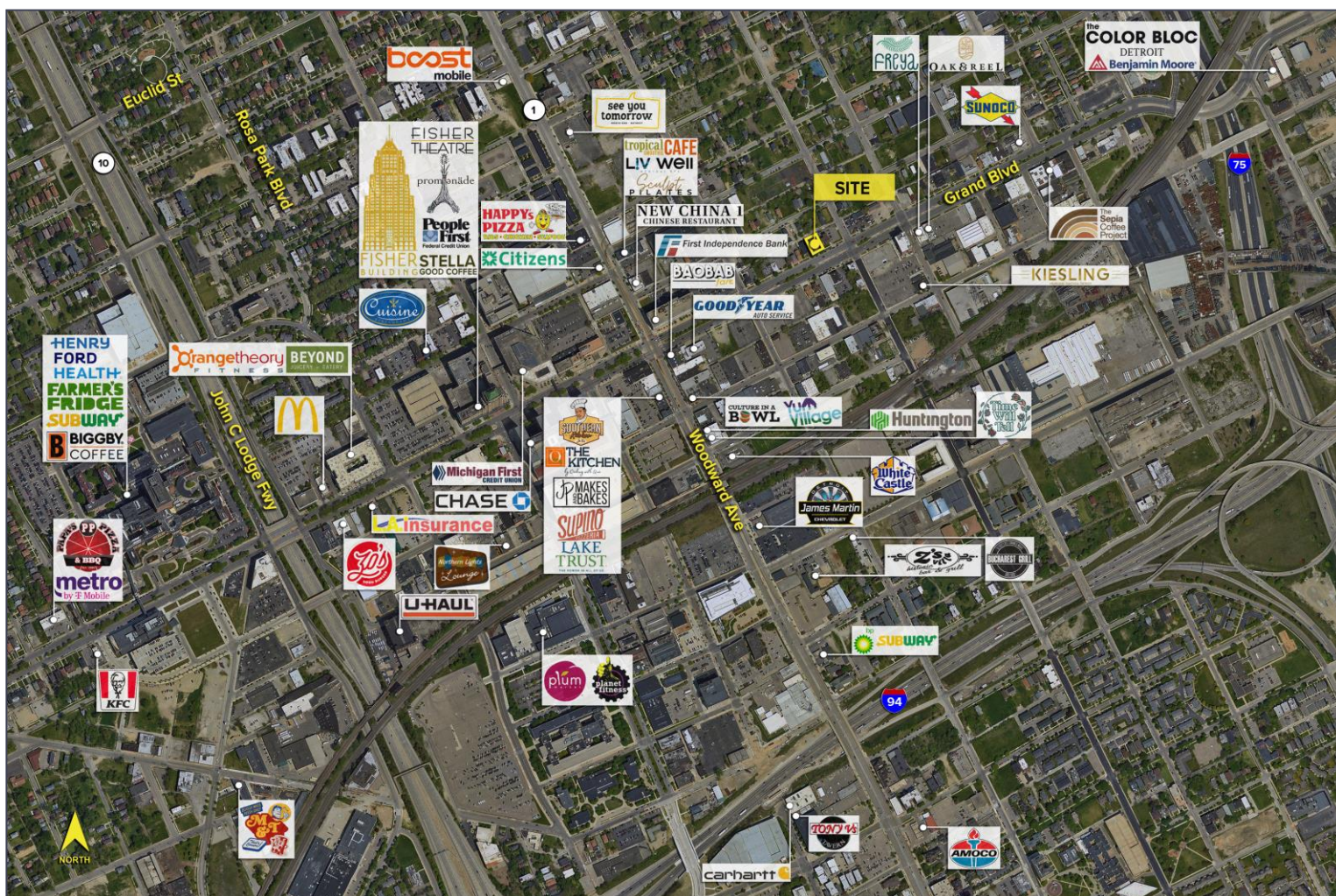


### DEMOGRAPHICS

	POPULATION	MED. HH INCOME
1 MILE	15,149	\$43,137
3 MILE	142,789	\$42,821
5 MILE	327,335	\$43,294

### TRAFFIC COUNTS (TWO-WAY)

16,005	Warren Ave. E. of Livernois Ave.
17,664	Warren Ave. W. of Livernois Ave.
24,100	Livernois Ave. S. of Warren Ave.
25,496	Livernois Ave. N. of Warren Ave.



For more information, please contact:

**JOE STACK**  
(248) 359 0615  
jstack@signatureassociates.com

**JOE PLASKEY**  
(248) 948 0110  
jplaskey@signatureassociates.com

**SIGNATURE ASSOCIATES**  
One Towne Square, Suite 1200  
Southfield, MI 48076  
www.signatureassociates.com