

23701-23711 JOHN R. ROAD  
HAZEL PARK, MICHIGAN

INDUSTRIAL FOR LEASE  
5,250 Square Feet Available



**SIGNATURE  
ASSOCIATES**  
KNOW SIGNATURE | KNOW RESULTS

**EXCELLENT ACCESS TO I-75 & I-696**



## PROPERTY FEATURES

- 5,250 square feet available
- 4,750 square feet of office
- 10' clear height
- (1) 10' x 10' grade level door
- Open engineering space with two private offices and two conference rooms
- Main road exposure with excellent access to I-75 & I-696 interchange
- Bathroom with shower
- Parking includes side street, alley, and road parking in front of the building
- Awning on the side of the building and a 200 amp plug which the former tenant used to power a mobile vehicle
- Lease Rate: \$11.00/sq. ft. NNN



For more information, please contact:

**KRIS PAWLOWSKI**  
(248) 359 3801  
kpawlowski@signatureassociates.com

**JOE STACK**  
(248) 359 0615  
jstack@signatureassociates.com

**SIGNATURE ASSOCIATES**  
One Towne Square, Suite 1200  
Southfield, MI 48076  
www.signatureassociates.com

# 23701 - 23711 John R. Road – Hazel Park, Michigan

## Industrial For Lease

5,250  
Square Feet  
AVAILABLE

### Interior Photos



For more information, please contact:

**KRIS PAWLOWSKI**  
(248) 359 3801  
kpawlowski@signatureassociates.com

**JOE STACK**  
(248) 359 0615  
jstack@signatureassociates.com

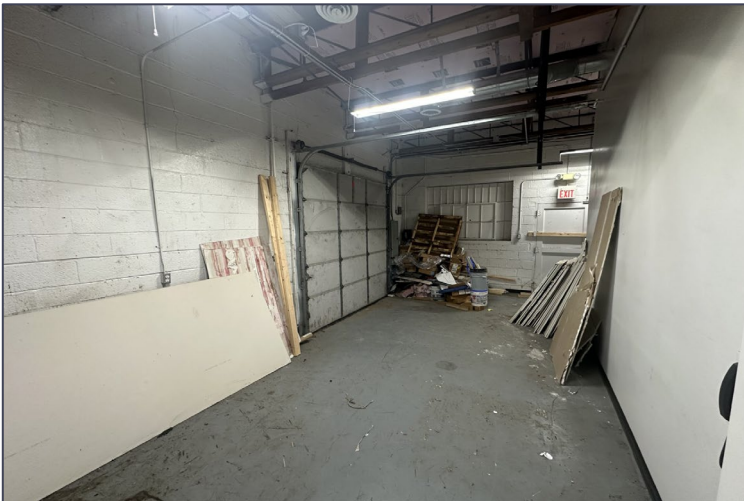
**SIGNATURE ASSOCIATES**  
One Towne Square, Suite 1200  
Southfield, MI 48076  
www.signatureassociates.com

# 23701 - 23711 John R. Road – Hazel Park, Michigan

## Industrial For Lease

5,250  
Square Feet  
AVAILABLE

### Interior Photos



For more information, please contact:

**KRIS PAWLOWSKI**  
(248) 359 3801  
kpawlowski@signatureassociates.com

**JOE STACK**  
(248) 359 0615  
jstack@signatureassociates.com

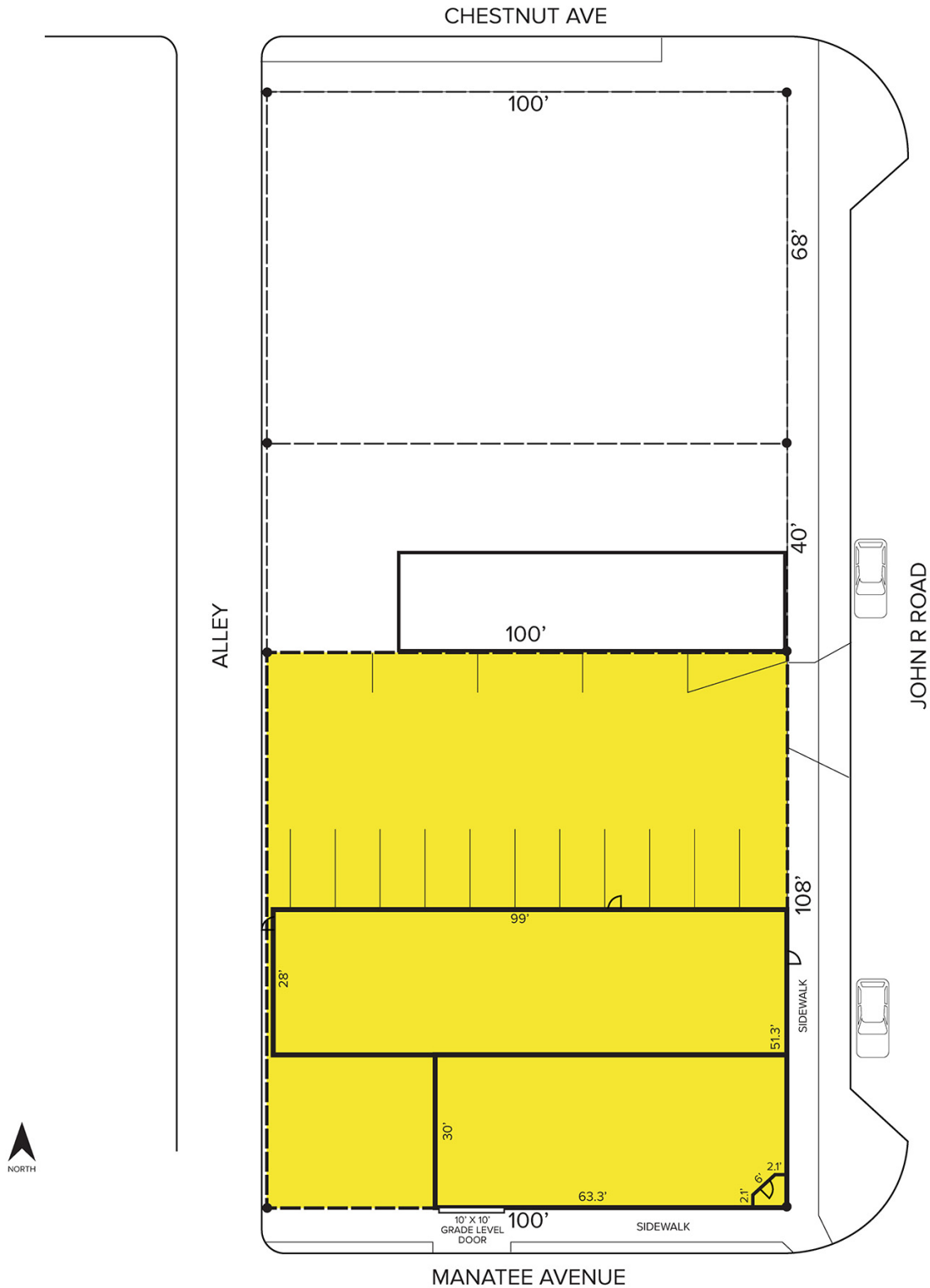
**SIGNATURE ASSOCIATES**  
One Towne Square, Suite 1200  
Southfield, MI 48076  
www.signatureassociates.com

# 23701 - 23711 John R. Road – Hazel Park, Michigan

Industrial For Lease

5,250  
Square Feet  
AVAILABLE

## Site Plan



For more information, please contact:

**KRIS PAWLOWSKI**  
(248) 359 3801  
kpawlowski@signatureassociates.com

**JOE STACK**  
(248) 359 0615  
jstack@signatureassociates.com

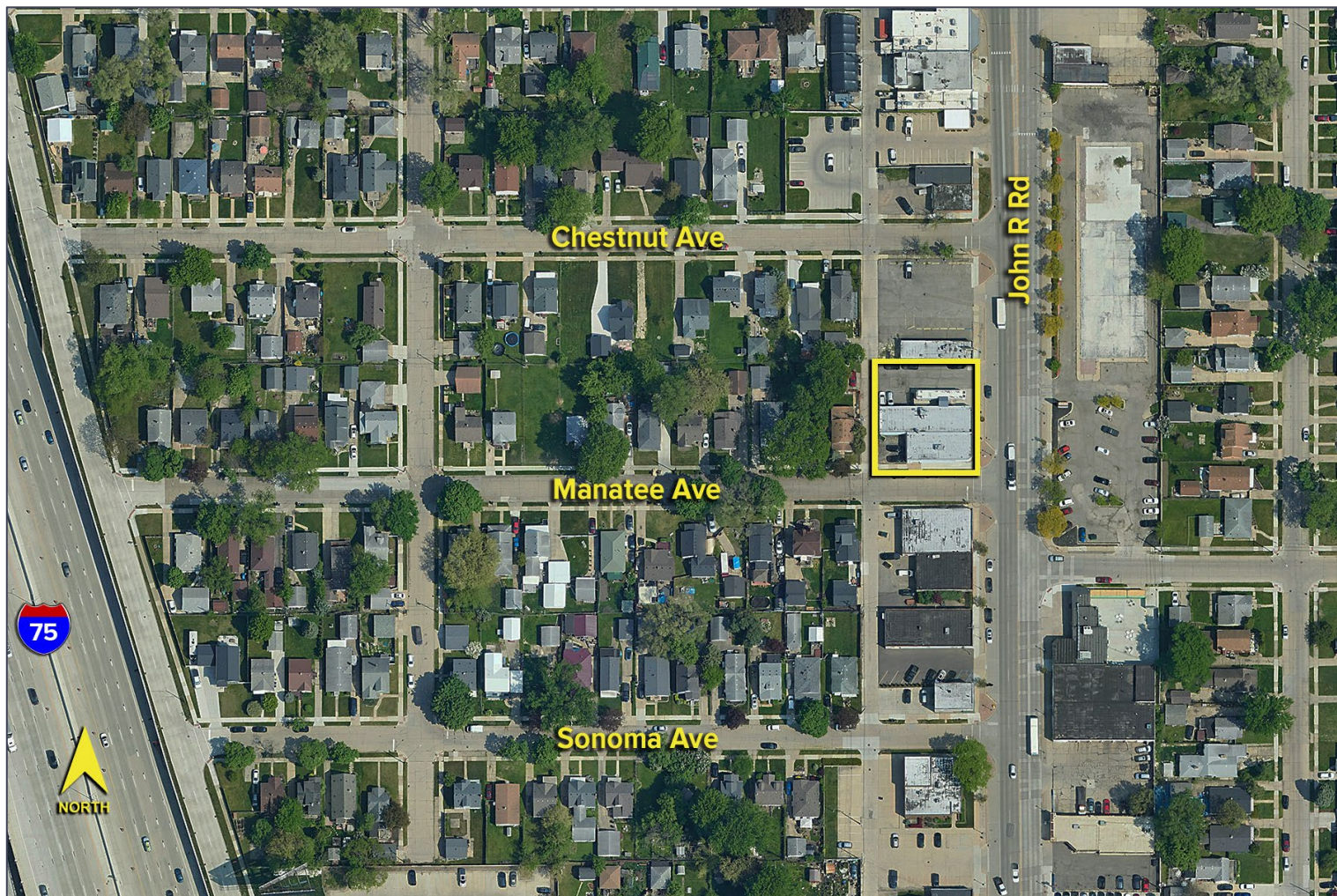
**SIGNATURE ASSOCIATES**  
One Towne Square, Suite 1200  
Southfield, MI 48076  
www.signatureassociates.com

# 23701 - 23711 John R. Road – Hazel Park, Michigan

Industrial For Lease

5,250  
Square Feet  
AVAILABLE

Aerial



For more information, please contact:

**KRIS PAWLOWSKI**  
(248) 359 3801  
kpawlowski@signatureassociates.com

**JOE STACK**  
(248) 359 0615  
jstack@signatureassociates.com

**SIGNATURE ASSOCIATES**  
One Towne Square, Suite 1200  
Southfield, MI 48076  
www.signatureassociates.com