

1294 BEACH COURT  
SALINE, MICHIGAN

INDUSTRIAL FOR LEASE  
13,000 Square Feet Available



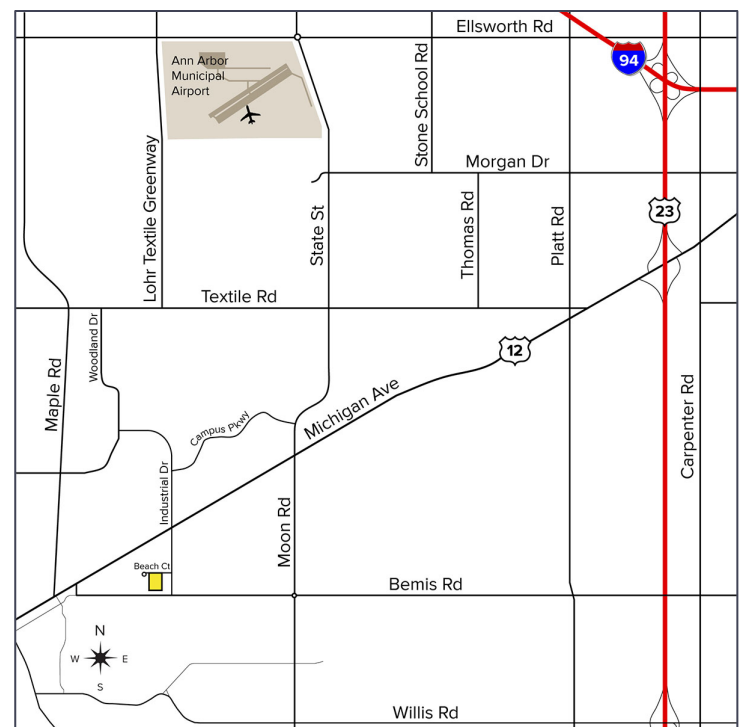
**SIGNATURE  
ASSOCIATES**  
KNOW SIGNATURE | KNOW RESULTS

**WAREHOUSE SPACE**



## PROPERTY FEATURES

- 13,000 square feet of warehouse space available for lease in 32,496 square foot warehouse section of building
- Total building size 105,418 square feet
- 30' clear height
- Access to (4) truck docks
- Access to (1) 14' x 14' grade level overhead door
- The entire 32,496 square foot warehouse section of the building has ESFR fire protection and radiant heating
- Convenient access to I-94 and US-23 expressways
- Lease Rate: \$9.00/sq. ft. NNN



For more information, please contact:

**JAY CHAVEY**  
(248) 948 4196  
jchavey@signatureassociates.com

**DRAKE FILIPPIS**  
(248) 799 3161  
dfilippis@signatureassociates.com

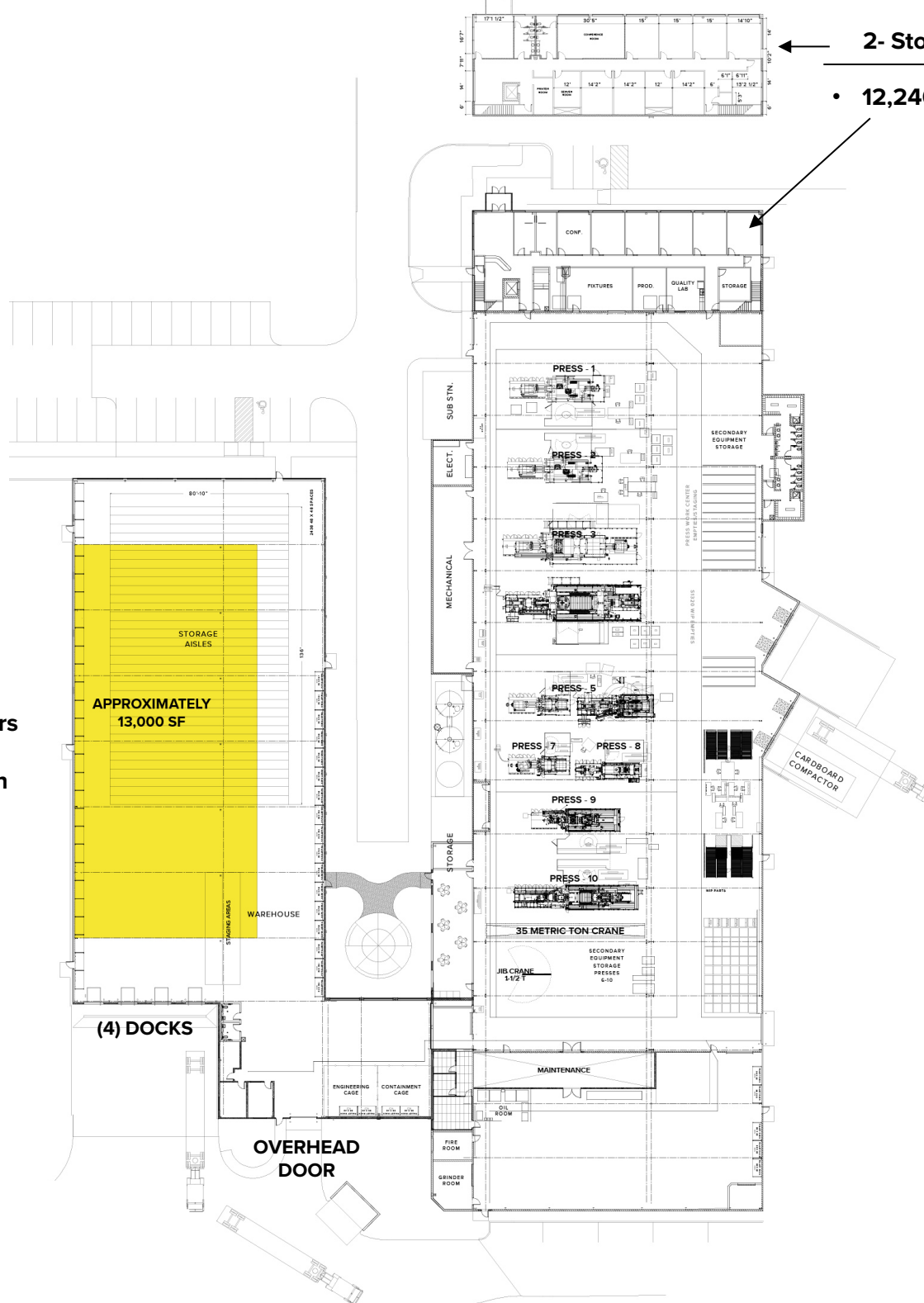
**SIGNATURE ASSOCIATES**  
One Towne Square, Suite 1200  
Southfield, MI 48076  
www.signatureassociates.com

Information is subject to verification and no liability for errors or omissions is assumed. Price is subject to change and listing withdrawal.

13,000  
Square Feet  
AVAILABLE

- **12,240 sq. ft.**

- **13,000 sq. ft.**  
**available For Lease**
- **30' clear height**
- **(4) truck docks**
- **(1) 14' x 14' grade**  
**level overhead doors**
- **Radiant heat**
- **ESFR fire protection**



**SIGNATURE ASSOCIATES**  
One Towne Square, Suite 1200  
Southfield, MI 48076  
[www.signatureassociates.com](http://www.signatureassociates.com)

Information is subject to verification and no liability for errors or omissions is assumed. Price is subject to change and listing withdrawal.



# 1294 Beach Court – Saline, Michigan

## Industrial For Lease

13,000  
Square Feet  
AVAILABLE

### Exterior Photos

#### Warehouse Building



For more information, please contact:

**JAY CHAVEY**  
(248) 948 4196

[jchavey@signatureassociates.com](mailto:jchavey@signatureassociates.com)

**DRAKE FILIPPIS**  
(248) 799 3161

[dfilippis@signatureassociates.com](mailto:dfilippis@signatureassociates.com)

**SIGNATURE ASSOCIATES**  
One Towne Square, Suite 1200  
Southfield, MI 48076  
[www.signatureassociates.com](http://www.signatureassociates.com)

Information is subject to verification and no liability for errors or omissions is assumed. Price is subject to change and listing withdrawal.

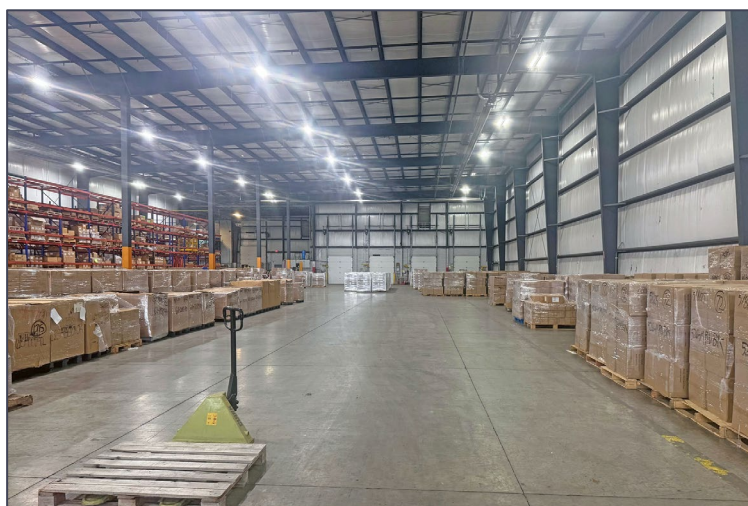
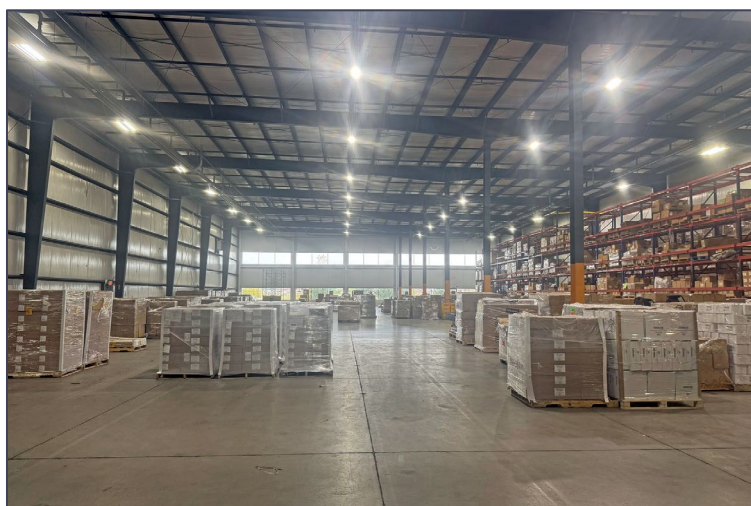
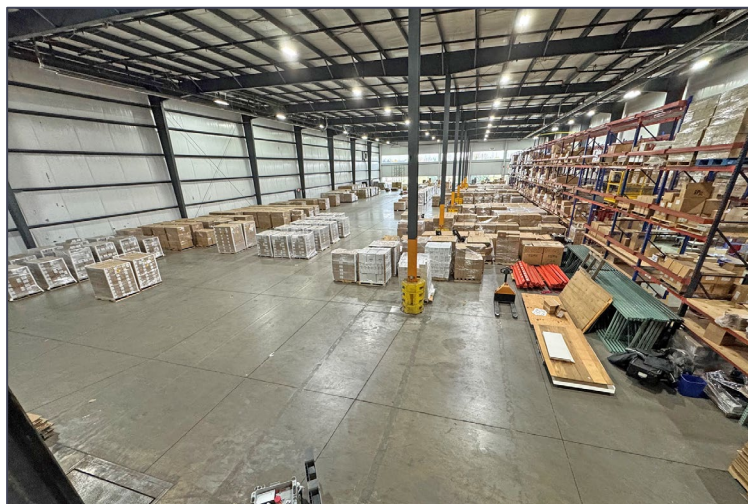
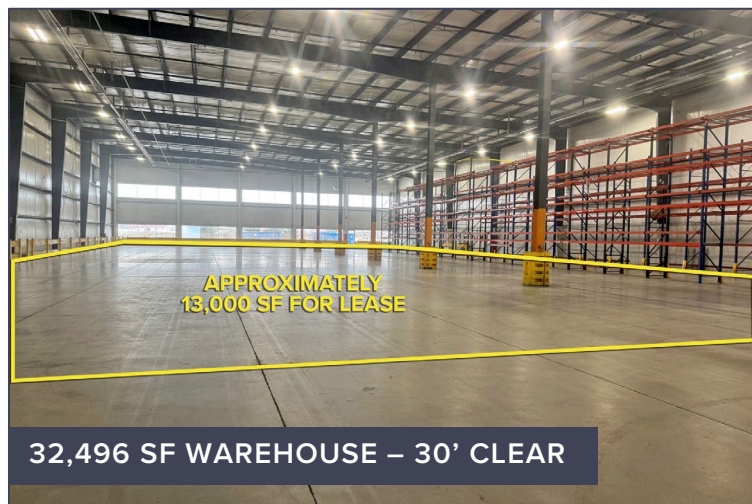


# 1294 Beach Court – Saline, Michigan

## Industrial For Lease

13,000  
Square Feet  
AVAILABLE

### Interior Photos



For more information, please contact:

**JAY CHAVEY**  
(248) 948 4196

[jchavey@signatureassociates.com](mailto:jchavey@signatureassociates.com)

**DRAKE FILIPPIS**  
(248) 799 3161

[dfilippis@signatureassociates.com](mailto:dfilippis@signatureassociates.com)

**SIGNATURE ASSOCIATES**  
One Towne Square, Suite 1200  
Southfield, MI 48076  
[www.signatureassociates.com](http://www.signatureassociates.com)

Information is subject to verification and no liability for errors or omissions is assumed. Price is subject to change and listing withdrawal.

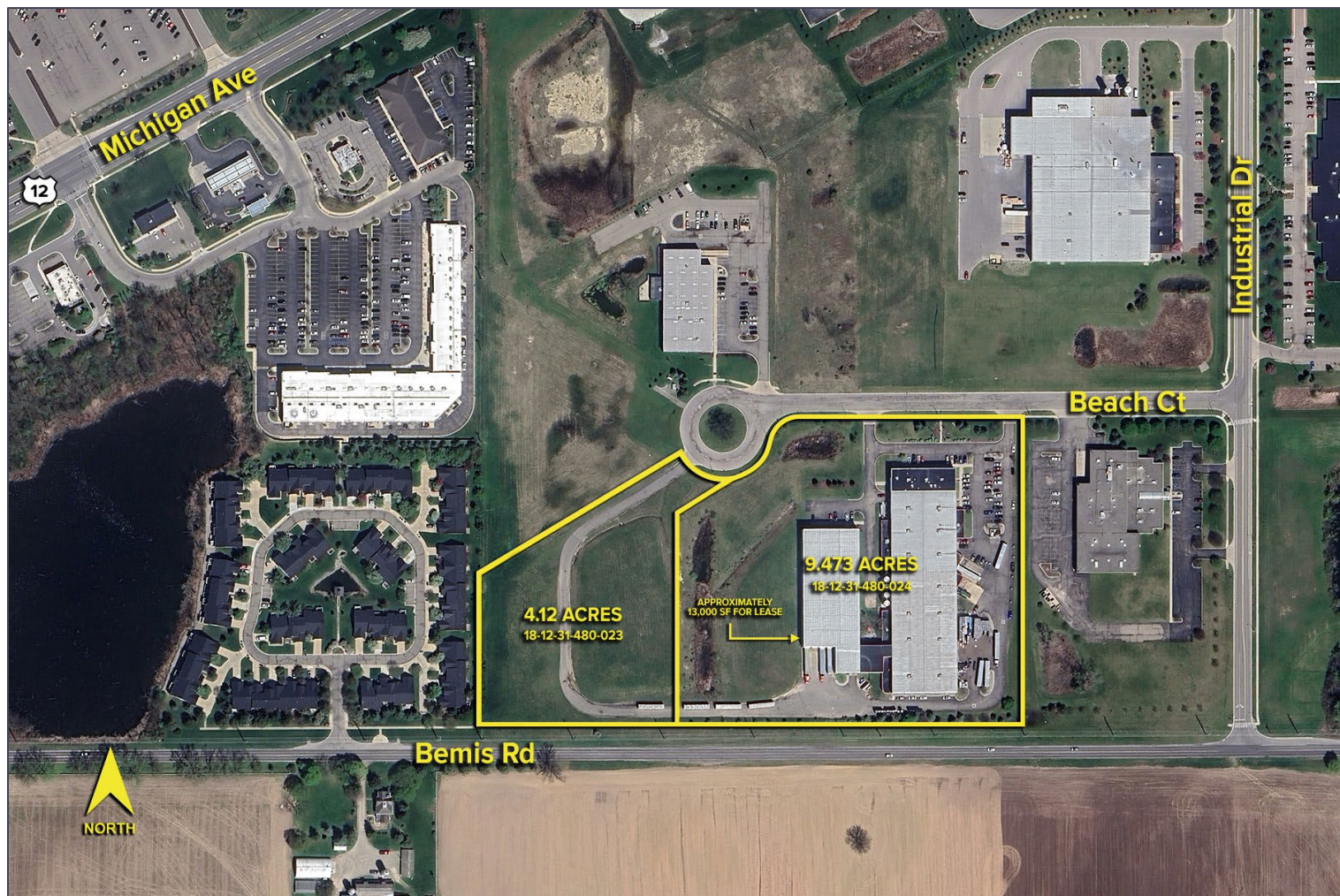


# 1294 Beach Court – Saline, Michigan

## Industrial For Lease

13,000  
Square Feet  
AVAILABLE

Aerial



Total Site – 13.59 Acres, (2) Two Parcel Assemblage

For more information, please contact:

**JAY CHAVEY**  
(248) 948 4196

[jchavey@signatureassociates.com](mailto:jchavey@signatureassociates.com)

**DRAKE FILIPPIS**  
(248) 799 3161

[dfilippis@signatureassociates.com](mailto:dfilippis@signatureassociates.com)

**SIGNATURE ASSOCIATES**  
One Towne Square, Suite 1200  
Southfield, MI 48076  
[www.signatureassociates.com](http://www.signatureassociates.com)

Information is subject to verification and no liability for errors or omissions is assumed. Price is subject to change and listing withdrawal.